

## DISTRICT I

1625 N. FRENCH DR., BOBBS, NM 86240

## State of New Mexico

Energy, Minerals and Natural Resources Department

## DISTRICT II

1301 W. GRAND AVENUE, ARTESIA, NM 86210

## DISTRICT III

1000 Rio Brazos Rd., Artec, NM 87410

## DISTRICT IV

1220 S. ST. FRANCIS DR., SANTA FE, NM 87505

OIL CONSERVATION DIVISION  
1220 SOUTH ST. FRANCIS DR.  
Santa Fe, New Mexico 87505

Form C-102

Revised JUNE 10, 2003

Submit to Appropriate District Office

State Lease - 4 Copies

Fee Lease - 3 Copies

## WELL LOCATION AND ACREAGE DEDICATION PLAT

☐ AMENDED REPORT

API Number 30-025- 37155	Pool Code 57000	Pool Name Skaggs Drinkard
Property Code 34708	Property Name STATE AR	Well Number
OGRID No. 192463	Operator Name OXY USA WTP Limited Partnership	Elevation 3605'

## Surface Location

UL or lot No.	Section	Township	Range	Lot Idn	Feet from the	North/South line	Feet from the	East/West line	County
L	2	20-S	37-E		1980	SOUTH	760	WEST	LEA

## Bottom Hole Location If Different From Surface

UL or lot No.	Section	Township	Range	Lot Idn	Feet from the	North/South line	Feet from the	East/West line	County

Dedicated Acres 40	Joint or Infill No	Consolidation Code	Order No.
-----------------------	-----------------------	--------------------	-----------

NO ALLOWABLE WILL BE ASSIGNED TO THIS COMPLETION UNTIL ALL INTERESTS HAVE BEEN CONSOLIDATED  
OR A NON-STANDARD UNIT HAS BEEN APPROVED BY THE DIVISION

LOT 4	LOT 3	LOT 2	LOT 1
-------	-------	-------	-------

GEODETIC COORDINATES  
NAD 27 NME

Y=583838.3 N  
X=840452.2 E

LAT.=32°36'00.76" N  
LONG.=103°13'40.26" W

**OPERATOR CERTIFICATION**

I hereby certify the the information contained herein is true and complete to the best of my knowledge and belief.

*David Stewart*  
Signature

David Stewart  
Printed Name

Sr. Regulatory Analyst  
Title

6/28/05  
Date

**SURVEYOR CERTIFICATION**

I hereby certify that the well location shown on this plat was plotted from field notes of actual surveys made by me or under my supervision, and that the same is true and correct to the best of my belief.

MARCH 10, 2005  
Date Surveyed

*GARY G. EIDSON*  
Signature & Seal  
Professional Surveyor

12641  
Certificate No.

DEL

## DISTRICT I

1625 N. FRANCE DR., HOHRS, NM 88240

## DISTRICT II

1301 W. GRAND AVENUE, ARTESIA, NM 88210

## DISTRICT III

1000 Rio Brazos Rd., Artec, NM 87410

## DISTRICT IV

1220 S. ST. FRANCIS DR., SANTA FE, NM 87505

## State of New Mexico

Energy, Minerals and Natural Resources Department

OIL CONSERVATION DIVISION  
1220 SOUTH ST. FRANCIS DR.  
Santa Fe, New Mexico 87505

Form C-102

Revised JUNE 10, 2003

Submit to Appropriate District Office

State Lease - 4 Copies

Fee Lease - 3 Copies

## WELL LOCATION AND ACREAGE DEDICATION PLAT

☐ AMENDED REPORT

API Number 30-025- 37155	Pool Code 47090	Pool Name Monument Tubb
Property Code 34708	Property Name STATE AR	Well Number
OGRID No. 192463	Operator Name OXY USA WTP Limited Partnership	Elevation 3605'

## Surface Location

UL or lot No.	Section	Township	Range	Lot Idn	Feet from the	North/South line	Feet from the	East/West line	County
L	2	20-S	37-E		1980	SOUTH	760	WEST	LEA

## Bottom Hole Location If Different From Surface

UL or lot No.	Section	Township	Range	Lot Idn	Feet from the	North/South line	Feet from the	East/West line	County

Dedicated Acres 80	Joint or Infill Nc	Consolidation Code	Order No.
-----------------------	-----------------------	--------------------	-----------

NO ALLOWABLE WILL BE ASSIGNED TO THIS COMPLETION UNTIL ALL INTERESTS HAVE BEEN CONSOLIDATED  
OR A NON-STANDARD UNIT HAS BEEN APPROVED BY THE DIVISION

LOT 4	LOT 3	LOT 2	LOT 1
-------	-------	-------	-------

GEODETIC COORDINATES  
NAD 27 NME

Y=583838.3 N  
X=840452.2 E

LAT.=32°36'00.76" N  
LONG.=103°13'40.26" W

**OPERATOR CERTIFICATION**

I hereby certify the the information contained herein is true and complete to the best of my knowledge and belief.

*David Stewart*  
Signature

David Stewart  
Printed Name

Sr. Regulatory Analyst  
Title

delos  
Date

**SURVEYOR CERTIFICATION**

I hereby certify that the well location shown on this plat was plotted from field notes of actual surveys made by me or under my supervision, and that the same is true and correct to the best of my belief.

MARCH 21, 2005  
Date Surveyed

*GARY G. EIDSON*  
Signature

GARY G. EIDSON  
Professional Surveyor

12641  
Certificate No.

05.11.0420  
Date of Survey

12641  
Certificate No.

# State of New Mexico

Energy, Minerals and Natural Resources Department

## DISTRICT I

1625 N. FRANCH DR., HOBBBS, NM 88240

## DISTRICT II

1301 W. GRAND AVENUE, ARTESIA, NM 88210

## DISTRICT III

1000 Rio Brazos Rd., Aztec, NM 87410

## DISTRICT IV

1220 S. ST. FRANCIS DR., SANTA FE, NM 87505

# OIL CONSERVATION DIVISION

1220 SOUTH ST. FRANCIS DR.  
Santa Fe, New Mexico 87505

Form C-102

Revised JUNE 10, 2003

Submit to Appropriate District Office

State Lease - 4 Copies

Fee Lease - 3 Copies

## WELL LOCATION AND ACREAGE DEDICATION PLAT

☐ AMENDED REPORT

API Number 30-025- 37155	Pool Code 63780	Pool Name Weir Blinberry
Property Code 34708	Property Name STATE AR	Well Number
OGRID No. 192463	Operator Name OXY USA WTP Limited Partnership	Elevation 3605'

### Surface Location

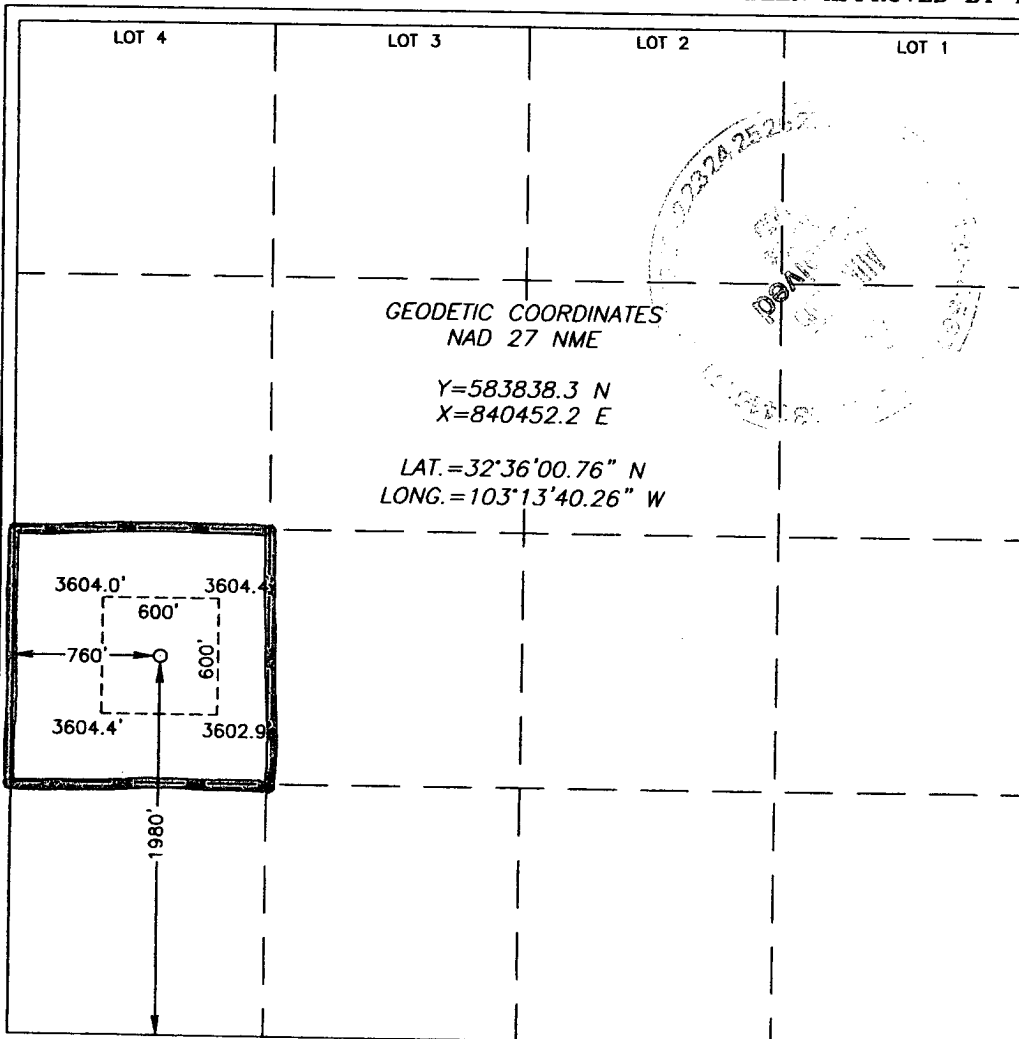
UL or lot No.	Section	Township	Range	Lot Idn	Feet from the	North/South line	Feet from the	East/West line	County
L	2	20-S	37-E		1980	SOUTH	760	WEST	LEA

### Bottom Hole Location If Different From Surface

UL or lot No.	Section	Township	Range	Lot Idn	Feet from the	North/South line	Feet from the	East/West line	County

Dedicated Acres 40	Joint or Infill No	Consolidation Code	Order No.
-----------------------	-----------------------	--------------------	-----------

NO ALLOWABLE WILL BE ASSIGNED TO THIS COMPLETION UNTIL ALL INTERESTS HAVE BEEN CONSOLIDATED  
OR A NON-STANDARD UNIT HAS BEEN APPROVED BY THE DIVISION



### OPERATOR CERTIFICATION

I hereby certify the the information contained herein is true and complete to the best of my knowledge and belief.

Signature

David Stewart

Printed Name

Sr. Regulatory Analyst

Title

Date

6/8/05

### SURVEYOR CERTIFICATION

I hereby certify that the well location shown on this plat was plotted from field notes of actual surveys made by me or under my supervision, and that the same is true and correct to the best of my belief.

MAY 11 2005

Date Signed

Signature & Seal  
Professional Surveyor

DEL

12641

05.11.042

Certificate

12641