



**Southwestern Energy  
Company**

**Southwestern Energy Production Company  
2350 N. Sam Houston Parkway East  
Suite 300  
Houston, Texas 77032**

## **Hydrogen Sulfide (H<sub>2</sub>S) Contingency Plan**

**For**

30-015-34029

**No Bluff #5**

**And**

**No Bluff #6**

**And**

**Subsequent wells located on 80 acre lease  
as noted on attached Survey Plat.**

RECEIVED  
MAY 24 2005  
OCCUPANCY

These wells are open drilling sites. H<sub>2</sub>S monitoring equipment and emergency response equipment will be used within 500' of the zones known to contain H<sub>2</sub>S, including warning signs, wind indicators and H<sub>2</sub>S monitor.

Assumed 100 ppm ROE = 3000' (Radius of Exposure)  
100 ppm H<sub>2</sub>S concentration shall trigger activation of this plan.

### **Escape:**

Escape will be by taking the lease road going west approximately 0.2 miles. Continue past the "Y" intersection approximately 0.1 miles and turn right. Go northwest for approximately 1.0 miles to co. road #225 traveling northeast until the intersection of co. road #204. Travel northwest on co. road #204 until crossing hwy 82. 9.5 west is the town of Artesia.

### **Emergency Procedures**

In the case of a release of gas containing H<sub>2</sub>S, the first responder(s) must isolate the area and prevent entry by other persons into the 100 ppm ROE. Additionally the first responder(s) must evacuate any public places encompassed by the 100 ppm ROE. First responder(s) must take care not to injure themselves during this operation. Company and/or local officials must be contacted to aid in this operation. Evacuation of the public should be beyond the 100 ppm ROE.

All responders must have training in the detection of H<sub>2</sub>S, measures for protection against the gas, equipment used for protection and emergency response. Additionally, responders must be equipped with H<sub>2</sub>S monitors and air packs in order to control the release. Use the "buddy system" to ensure no injuries during the response.

### **Ignition of Gas Source**

Should control of the well be considered lost and ignition considered, take care to protect against exposure to Sulfur Dioxide (SO<sub>2</sub>). Intentional ignition must be coordinated with the NMOCD and local officials. Additionally the NM State Police may become involved. NM State Police shall be the Incident Command on scene of any major release. Take care to protect downwind whenever there is an ignition of the gas

### **Characteristics of H<sub>2</sub>S and SO<sub>2</sub>**

Common Name	Chemical Formula	Specific Gravity	Threshold Limit	Hazardous Limit	Lethal Concentration
Hydrogen Sulfide	H <sub>2</sub> S	1.189 Air = 1	10 ppm	100 ppm/hr	600 ppm
Sulfur Dioxide	SO <sub>2</sub>	2.21 Air = 1	2 ppm	N/A	1000 ppm

### Contacting Authorities

Southwestern Energy Production Company personnel must liaison with local and state agencies to ensure a proper response to a major release. Additionally, the NMOCD must be notified of the release as soon as possible but no later than 4 hours. Agencies will ask for information such as type and volume of release, wind direction, location of release, etc. Be prepared with all information available. The following call list of essential and potential responders has been prepared for use during a release. Southwestern Energy Production Company response must be in coordination with the State of New Mexico's 'Hazardous Materials Emergency Response Plan' (HMER)

### Southwestern Energy Production Call List      Office      Cellular

Bruce Drummon – Production Foreman.....505-393-1850..... 505-631-8083  
Kurt Butler – Production Engineer .. .....281-618-4749..... 713-569-2926  
Wilton Townsend – Drilling Consultant.....281-618-4869..... 713-898-5976  
Sonny Bryan – Drilling Manager..... .....281-618-4769..... 713-502-4046  
Mike McAllister – HSE Manager .... .....281-618-4824..... 713-560-0856

### Agency Call List

#### Eddy County (505)

##### Artesia

State Police .....746-2703  
City Police.....746-2703  
Sheriff's Office .....746-9888  
Ambulance .....911  
Fire Department .....746-2701  
LEPC (Local Emergency Planning Committee) .....746-2122  
NMOCD.....748-1283

##### Carlsbad

State Police .....885-3137

City Police.....885-2111  
 Sheriff's Office.....887-7551  
 Ambulance.....911  
 Fire Department.....885-2111  
 LEPC (Local Emergency Planning Committee)..... 887-3798  
 US Bureau of Land Management.....887-6544

New Mexico Emergency Response Commission (Santa Fe) (505)476-9600  
 24 HR .....(505) 827-9126  
 National Emergency Response Center (Washington, DC) ...(800) 424-8802

#### **Other**

Wild Well Control (281) 353-5481  
 Boots & Coots IWC 1-800-256-9688 or (281) 931-8884  
 Cudd Pressure Control (915) 699-0139 or (915) 563-3356  
 Halliburton .....(432) 682-4305  
 B. J. Services.....(505) 392-5556  
 B.J. Services (505)746-3140  
 Schlumberger (505) 748-1391

Flight For Life -4000 24th St, Lubbock, TX .....(806) 743-9911  
 Aerocare -Rr 3 Box 49f , Lubbock, TX .....(806) 747-8923  
 Med Flight Air Amb 2301 Yale Blvd SE #D3, Albuq, NM .....(505) 842-4433  
 S B Air Med Svc 2505 Clark Carr Loop SE, Albuq, NM ....(505) 842-4949

## DISTRICT I

1625 N. FRENCH DR., BOBBS, NM 88240

## DISTRICT II

1301 W. GRAND AVENUE, ARTESIA, NM 88210

## DISTRICT III

1000 Rio Brazos Rd., Artec, NM 87410

## DISTRICT IV

1220 S. ST. FRANCIS DR., SANTA FE, NM 87505

## State of New Mexico

Energy, Minerals and Natural Resources Department

OIL CONSERVATION DIVISION  
1220 SOUTH ST. FRANCIS DR.  
Santa Fe, New Mexico 87505

Form C-102

Revised JUNE 10, 2003

Submit to Appropriate District Office

State Lease - 4 Copies

Fee Lease - 3 Copies

## WELL LOCATION AND ACREAGE DEDICATION PLAT

☐ AMENDED REPORT

API Number		Pool Code	Pool Name	
Property Code	Property Name <b>NO BLUFF</b>			Well Number <b>7</b>
OGRID No.	Operator Name <b>SOUTHWESTERN ENERGY PRODUCTION COMPANY</b>			Elevation <b>3585'</b>

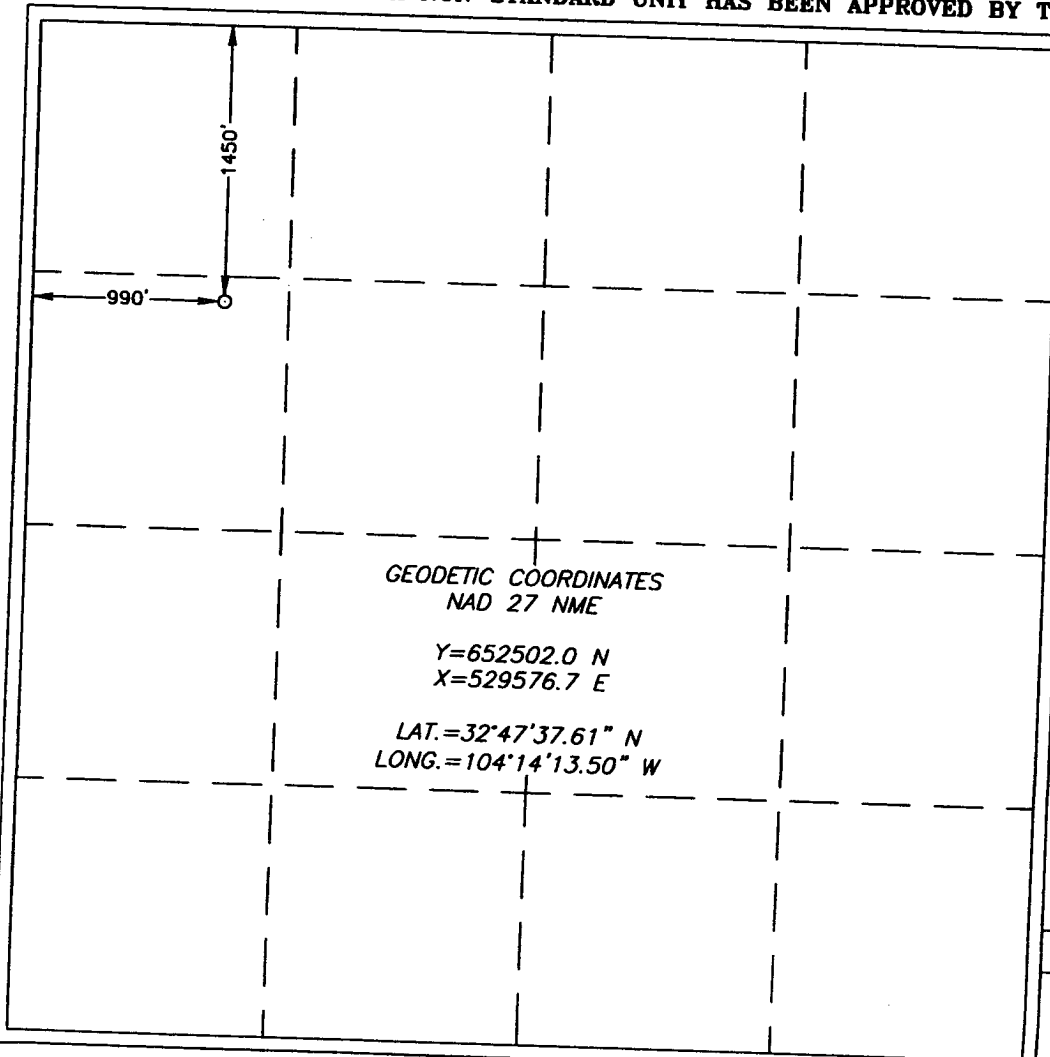
## Surface Location

UL or lot No.	Section	Township	Range	Lot Idn	Feet from the	North/South line	Feet from the	East/West line	County
E	36	17-S	27-E		1450	NORTH	990	WEST	EDDY

## Bottom Hole Location If Different From Surface

UL or lot No.	Section	Township	Range	Lot Idn	Feet from the	North/South line	Feet from the	East/West line	County
Dedicated Acres		Joint or Infill	Consolidation Code		Order No.				

NO ALLOWABLE WILL BE ASSIGNED TO THIS COMPLETION UNTIL ALL INTERESTS HAVE BEEN CONSOLIDATED  
OR A NON-STANDARD UNIT HAS BEEN APPROVED BY THE DIVISION



## OPERATOR CERTIFICATION

I hereby certify the the information  
contained herein is true and complete to the  
best of my knowledge and belief.

Signature

Printed Name

Title

Date

## SURVEYOR CERTIFICATION

I hereby certify that the well location shown  
on this plat was plotted from field notes of  
actual surveys made by me or under my  
supervision, and that the same is true and  
correct to the best of my belief.

APRIL 28, 2005

Date Surveyed

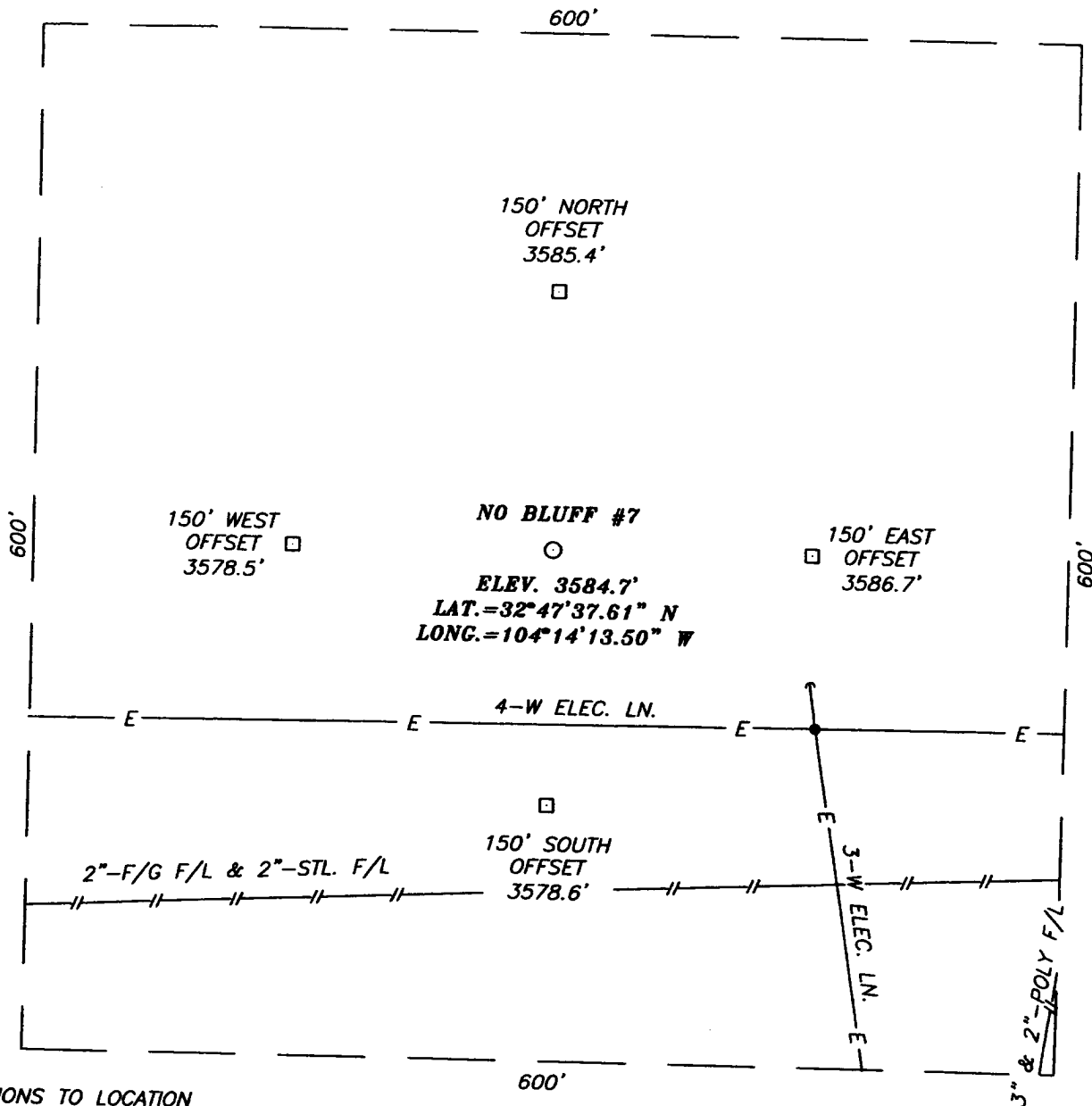
Signature of Seal of  
Professional Surveyor

**GARY E. EDSON**  
NEW MEXICO  
05.11.0668

Certificate No. GARY EDSON

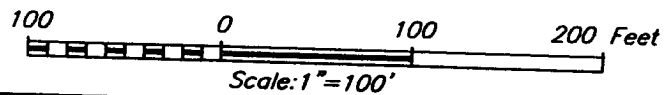
12841

**SECTION 36, TOWNSHIP 17 SOUTH, RANGE 27 EAST, N.M.P.M.,**  
 EDDY COUNTY, NEW MEXICO



**DIRECTIONS TO LOCATION**

FROM THE INTERSECTION OF U.S. HWY. #82 AND CO. RD. #204 (HILL TOP RD.) GO SE ON CO. RD. #204 FOR APPROX. 0.9 TO A CALICHE ROAD ON THE RIGHT. TURN RIGHT (SOUTH/SW) AND GO APPROX. 0.05 MILES TO A CALICHE ROAD ON THE RIGHT. TURN RIGHT (WEST) AND GO APPROX. 0.15 MILES TO A CALICHE ROAD ON THE LEFT. TURN LEFT (SOUTH) AND GO APPROX. 0.11 MILES TO A "Y" INTERSECTION. TURN LEFT AND GO SOUTH/SE FOR APPROX. 0.1 MILES, ROAD BENDS RIGHT AND GOES SOUTH/SW APPROX. 200' TO A NEW WELL. PROPOSED LOCATION IS APPROX. 300' SOUTH.



**SOUTHWESTERN ENERGY PRODUCTION COMPANY**

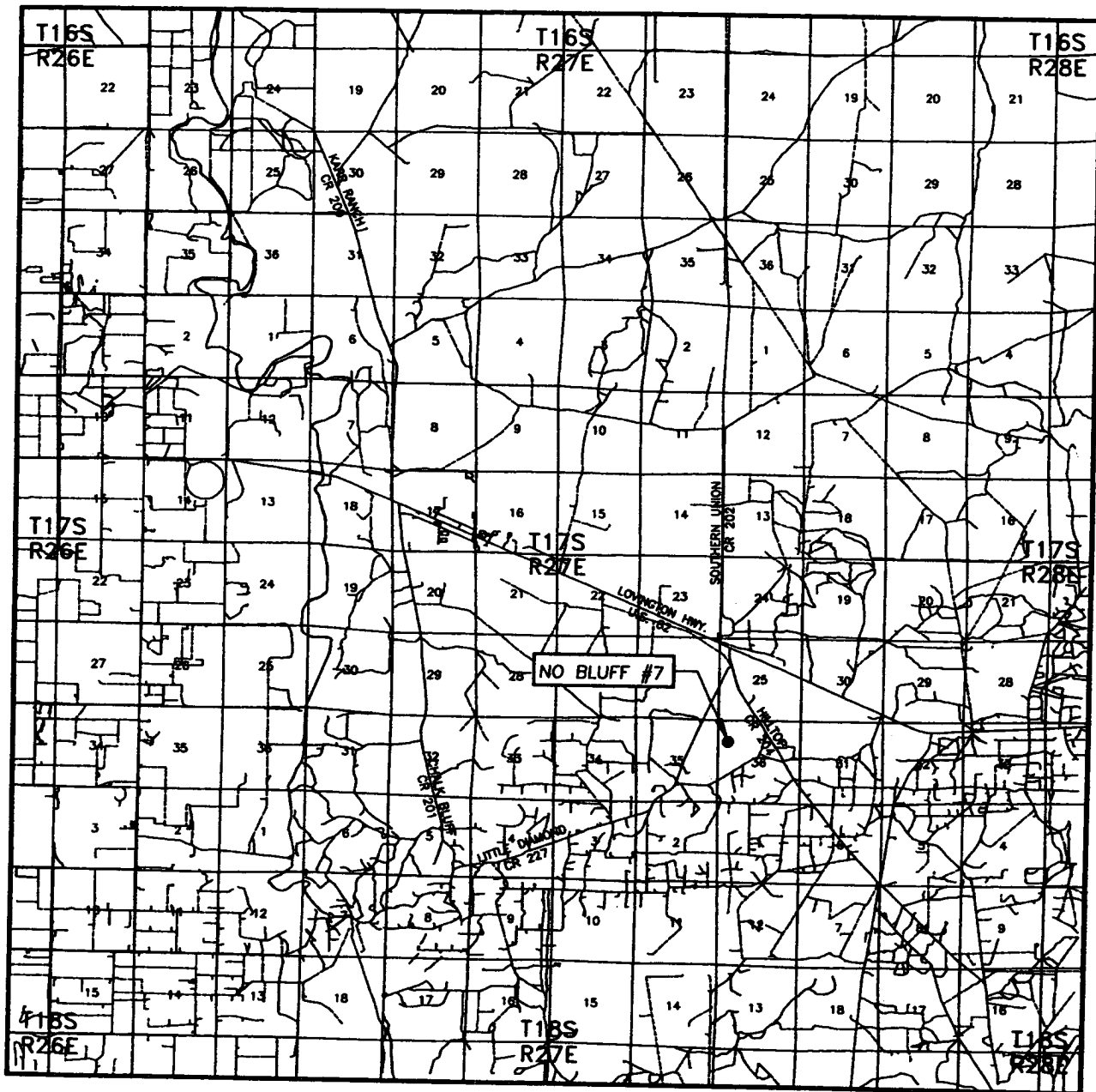
NO BLUFF #7 WELL  
 LOCATED 1450 FEET FROM THE NORTH LINE  
 AND 990 FEET FROM THE WEST LINE OF SECTION 36,  
 TOWNSHIP 17 SOUTH, RANGE 27 EAST, N.M.P.M.,  
 EDDY COUNTY, NEW MEXICO.

Survey Date: 04/28/05	Sheet 1 of 1 Sheets
W.O. Number: 05.11.0668	Dr By: J.R.
Date: 04/29/05	Disk: CD#5
05110668	Scale: 1"=100'



PROVIDING SURVEYING SERVICES  
 SINCE 1940  
**JOHN WEST SURVEYING COMPANY**  
 412 N. DAL PASO  
 HOBBS, N.M. 88240  
 (505) 383-3117

# VICINITY MAP



SCALE: 1" = 2 MILES

SEC. 36 TWP. 17-S RGE. 27-E

SURVEY N.M.P.M.

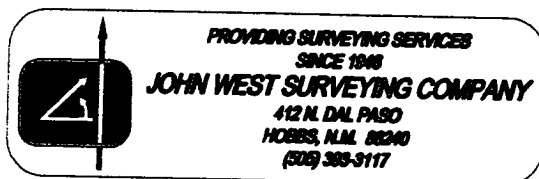
COUNTY EDDY

DESCRIPTION 1450' FNL & 990' FWL

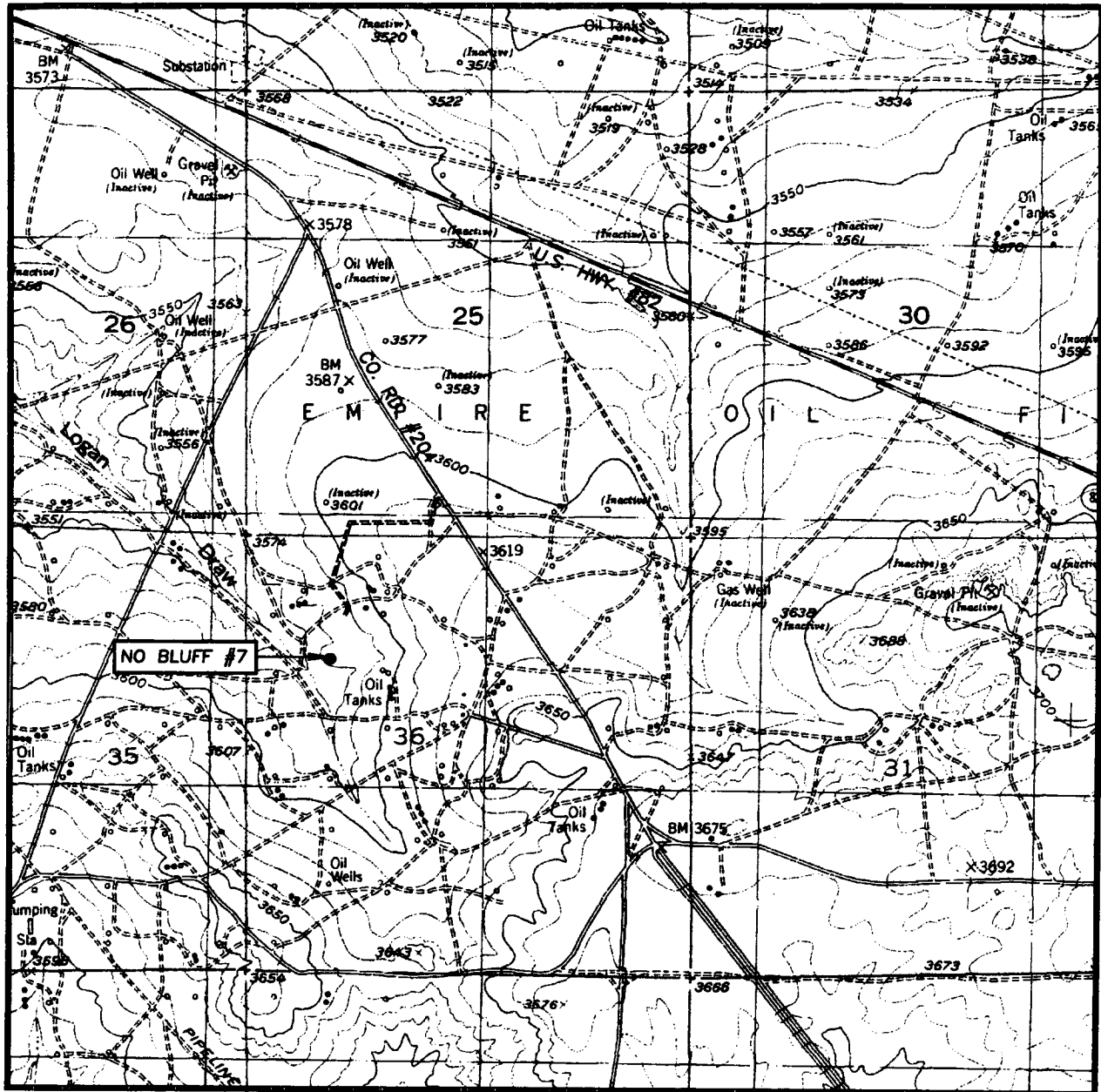
ELEVATION 3585'

OPERATOR SOUTHWESTERN ENERGY  
PRODUCTION COMPANY

LEASE NO BLUFF



# LOCATION VERIFICATION MAP



SCALE: 1" = 2000'

CONTOUR INTERVAL:  
RED LAKE, N.M. - 10'

SEC. 36 TWP. 17-S RGE. 27-E

SURVEY N.M.P.M.

COUNTY EDDY

DESCRIPTION 1450' FNL & 990' FWL

ELEVATION 3585'

OPERATOR SOUTHWESTERN ENERGY  
PRODUCTION COMPANY

LEASE NO BLUFF

U.S.G.S. TOPOGRAPHIC MAP  
RED LAKE, N.M.

