

District I
1625 N. French Dr., Hobbs, NM 88240
District II
1301 W. Grand Avenue, Artesia, NM 88210
District III
1000 Rio Brazos Road, Aztec, NM 87410
District IV
1220 S. St. Francis Dr., Santa Fe, NM 87505

State of New Mexico
Energy Minerals and Natural Resources

Form C-101
Revised March 17, 1999

Oil Conservation Division
1220 South St. Francis Dr.
Santa Fe, NM 87505

Submit to appropriate District Office
State Lease - 6 Copies
Fee Lease - 5 Copies

☐ AMENDED REPORT

APPLICATION FOR PERMIT TO DRILL, RE-ENTER, DEEPEN, PLUGBACK, OR ADD A ZONE

¹ Operator Name and Address Chesapeake Operating, Inc. P. O. Box 18496 Oklahoma City, OK 73154-0496		² OGRID Number 147179
³ Property Code 32255		⁴ API Number 30-025-31063
⁵ Property Name Billy State 15		⁶ Well No. 1

⁷ Surface Location

UL or lot no.	Section	Township	Range	Lot Idn	Feet from the	North/South line	Feet from the	East/West line	County
E	15	16S	37E		1992	North	817	West	Lea

⁸ Proposed Bottom Hole Location If Different From Surface

UL or lot no.	Section	Township	Range	Lot Idn	Feet from the	North/South line	Feet from the	East/West line	County
E	15	16S	37E		2310	North	990	West	Lea

⁹ Proposed Pool 1 Lovington Upper Penn, Northeast	¹⁰ Proposed Pool 2
---	-------------------------------

¹¹ Work Type Code E	¹² Well Type Code O	¹³ Cable/Rotary R	¹⁴ Lease Type Code State	¹⁵ Ground Level Elevation 3798'
¹⁶ Multiple N	¹⁷ Proposed Depth	¹⁸ Formation	¹⁹ Contractor	²⁰ Spud Date

²¹ Proposed Casing and Cement Program

Hole Size	Casing Size	Casing weight/foot	Setting Depth	Sacks of Cement	Estimated TOC
17-1/2	13-3/8	48#	0-442'	±450	Surface
11"	8-5/8	28#	0-4400'	±1740	Surface
7-7/8"	5-1/2	17#	0-11,800'	±1100	4400'

²² Describe the proposed program. If this application is to DEEPEN or PLUG BACK, give the data on the present productive zone and proposed new productive zone.

Describe the blowout prevention program, if any. Use additional sheets if necessary.

This well is a re-entry on a well previously drilled, plugged & abandoned. The 13-3/8" & 8-5/8" have been cemented to surface. The 8-5/8" casing will be repaired, tested & wellhead will be installed. Spud 11/20/90 by Pennzoil Expl. & Prod. Co.

COI proposes to drill to a T.D. of 11,850' in the Strawn formation with Nabors as the drilling contractor.

BOP consists of 13-5/8" 10M# blind & pipe rams & 13-5/8" 5M # Annular (see schematic)

²³ I hereby certify that the information given above is true and complete to the best of my knowledge and belief.

Signature: *Lynda Townsend*

Printed name: Lynda Townsend

Title: Landman

Date: 04/14/03

Phone: (405) 888-0000

OIL CONSERVATION DIVISION

ORIGINAL SIGNED BY

Approved by: CHRIS WILLIAMS

OC DISTRICT SUPERVISOR/GENERAL MANAGER

Title:

Approval Date: APR 17 2003 Expiration Date:

Conditions of Approval:

Attached ☐

May not produce until Bottom Hole Location is approved.

Permit Expires 1 Year From Approval Date Unless Drilling Underway

State of New Mexico

DISTRICT I

P.O. Box 1880, Hobbs, NM 88241-1880

Energy, Minerals and Natural Resources Department

Form C-102

Revised February 10, 1994

Submit to Appropriate District Office

State Lease - 4 Copies

Fee Lease - 3 Copies

DISTRICT II

P.O. Drawer DD, Artesia, NM 88211-0719

OIL CONSERVATION DIVISION

P.O. Box 2088

Santa Fe, New Mexico 87504-2088

DISTRICT III

1000 Rio Brazos Rd., Artec, NM 87410

DISTRICT IV

P.O. Box 2088, Santa Fe, N.M. 87504-2088

WELL LOCATION AND ACREAGE DEDICATION PLAT

☐ AMENDED REPORT

API Number 3D-025-31063	Pool Code 40760	Pool Name Lovington Upper Penn, Northeast
Property Code 32255	Property Name BILLY STATE "15"	Well Number 1
OGRID No. 147179	Operator Name CHESAPEAKE OPERATING, INC.	Elevation 3798'

Surface Location

UL or lot No.	Section	Township	Range	Lot Idn	Feet from the	North/South line	Feet from the	East/West line	County
E	15	16-S	37-E		1992'	NORTH	817'	WEST	LEA

Bottom Hole Location If Different From Surface

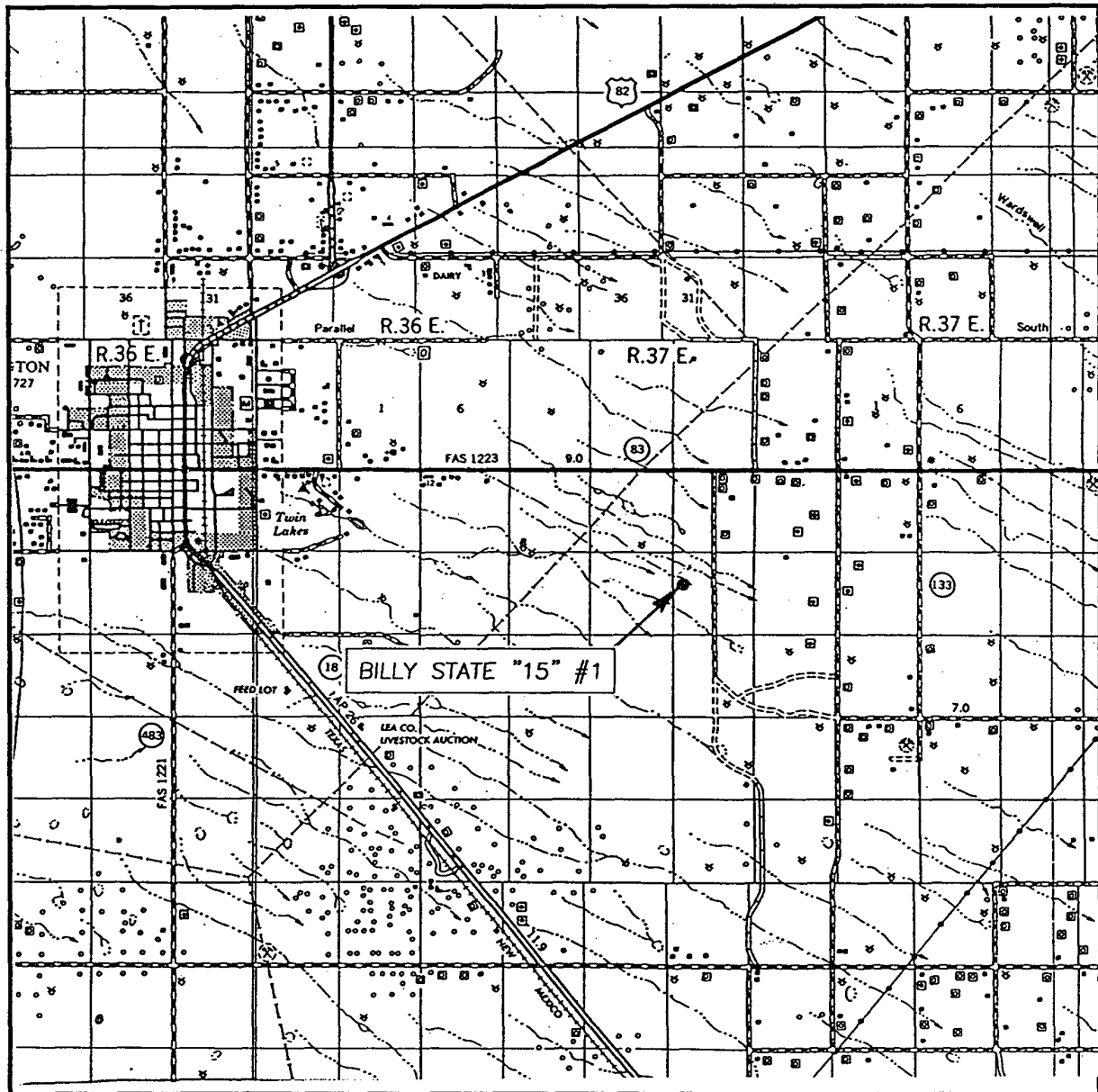
UL or lot No.	Section	Township	Range	Lot Idn	Feet from the	North/South line	Feet from the	East/West line	County
E	15	16-S	37-E		2310'	NORTH	990'	WEST	LEA

Dedicated Acres	Joint or Infill	Consolidation Code	Order No.
80			

NO ALLOWABLE WILL BE ASSIGNED TO THIS COMPLETION UNTIL ALL INTERESTS HAVE BEEN CONSOLIDATED
OR A NON-STANDARD UNIT HAS BEEN APPROVED BY THE DIVISION

		<p>S/2 NW Sec 15-16S-37E</p> <p>SURFACE LOC. GEODETIC COORDINATE SPC NME NAD 1927 Y = 701479.1 X = 834462.1 LAT. 32°55'25.28"N LONG. 103°14'36.11"W</p>	<p>OPERATOR CERTIFICATION</p> <p>I hereby certify the the information contained herein is true and complete to the best of my knowledge and belief.</p> <p><i>Lynda J. Townsend</i> Signature</p> <p>Lynda Townsend Printed Name</p> <p>Landman Title</p> <p>04/14/03 Date</p>
<p>Y = 701162.5 X = 834637.0</p>			<p>SURVEYOR CERTIFICATION</p> <p>I hereby certify that the well location shown on this plat was plotted from field notes of actual surveys made by me or under my supervision, and that the same is true and correct to the best of my belief.</p> <p>MARCH 12, 2003</p> <p>Date Surveyed</p> <p>Signature & Seal of Professional Surveyor</p> <p><i>Gary Edson</i> 3/14/03 03-110307</p> <p>Certificate No. RONALD J. EDSON 3239 GARY EDSON 12641</p>

VICINITY MAP



SCALE: 1" = 2 MILES

SEC. 15 TWP. 16-S RGE. 37-E

SURVEY N.M.P.M.

COUNTY LEA

DESCRIPTION 1992' FNL & 817' FWL

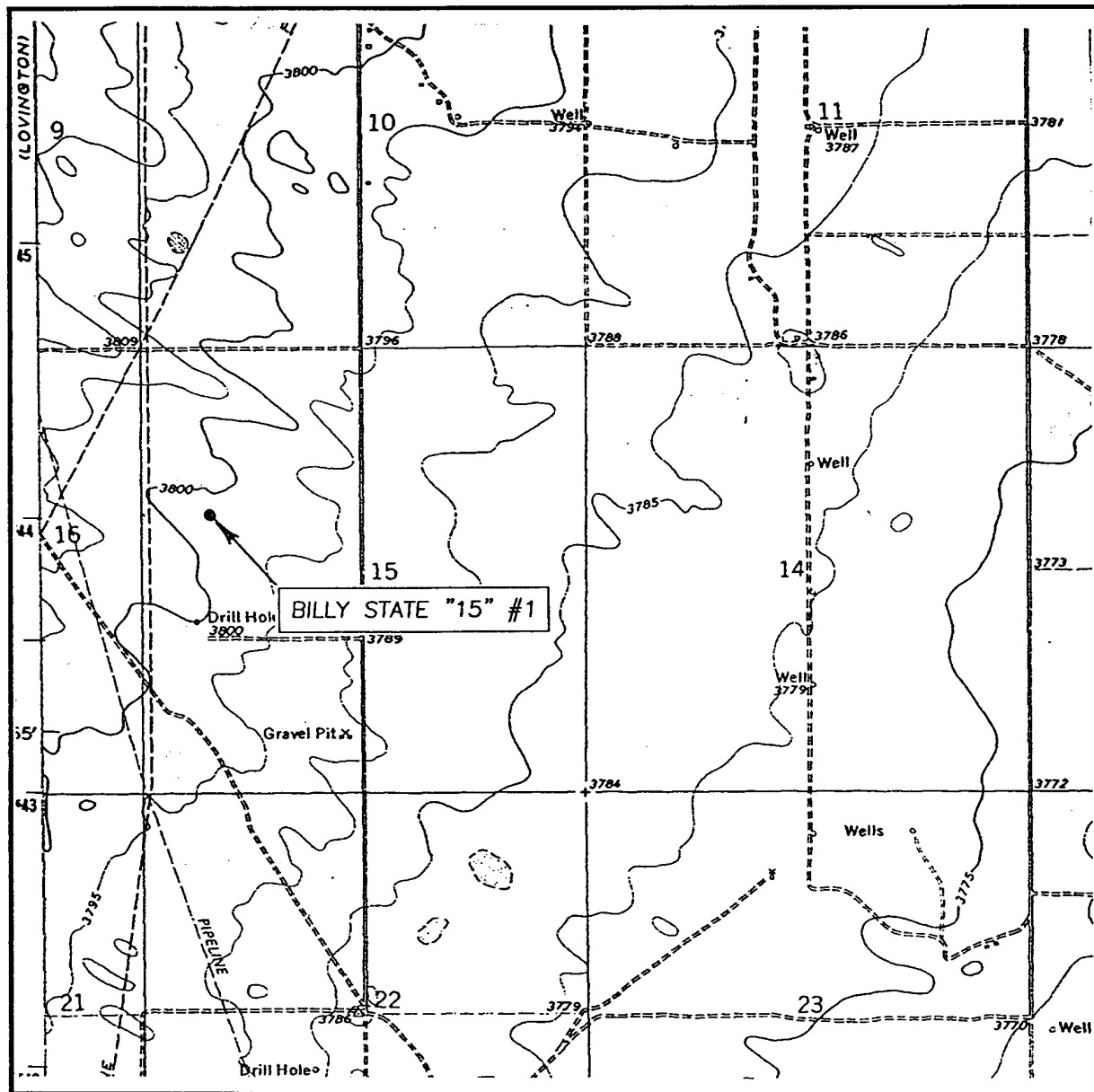
ELEVATION 3798'

OPERATOR CHESAPEAKE OPERATING, INC.

LEASE BILLY STATE "15"

JOHN WEST SURVEYING
HOBBS, NEW MEXICO
(505) 393-3117

LOCATION VERIFICATION MAP



SCALE: 1" = 2000'

CONTOUR INTERVAL: 5'
HUMBLE CITY NW, N.M.

SEC. 15 TWP. 16-S RGE. 37-E

SURVEY N.M.P.M.

COUNTY LEA

DESCRIPTION 1992' FNL & 817' FWL

ELEVATION 3798'

OPERATOR CHESAPEAKE OPERATING, INC.

LEASE BILLY STATE "15"

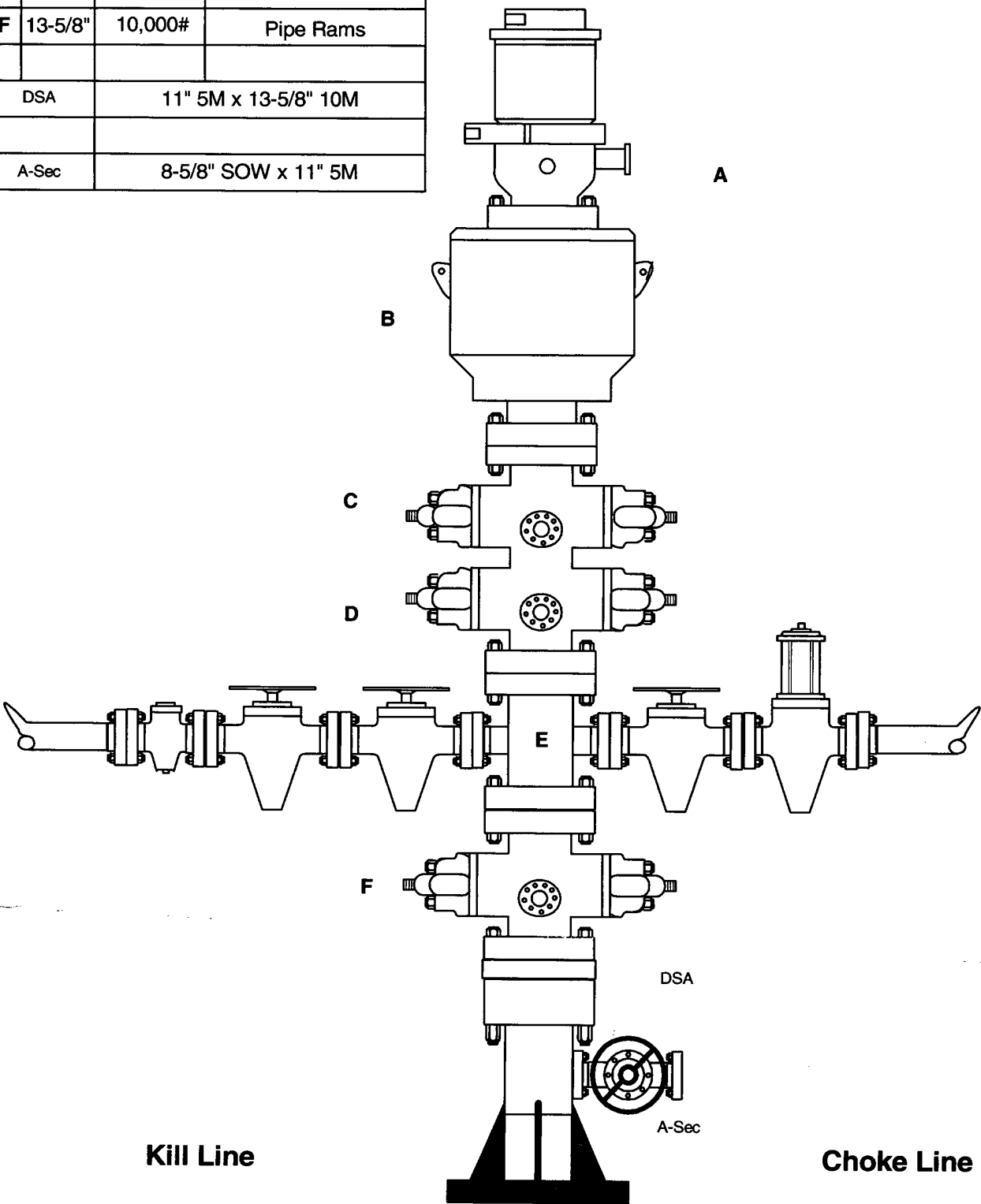
U.S.G.S. TOPOGRAPHIC MAP
HUMBLE CITY NW, N.M.

JOHN WEST SURVEYING
HOBBS, NEW MEXICO
(505) 393-3117

BLOWOUT PREVENTOR SCHEMATIC
CHESAPEAKE OPERATING INC

WELL : Billy State 1-15
FIELD :
RIG : Nabors 311
COUNTY : Lea STATE: New Mexico
OPERATION: Drill out below 8-5/8" Casing

	SIZE	PRESSURE	DESCRIPTION
A	13-5/8"	500#	Rot Head
B	13-5/8"	5,000#	Annular
C	13-5/8"	10,000#	Pipe Rams
D	13-5/8"	10,000#	Blind Rams
E	13-5/8"	10,000#	Mud Cross
F	13-5/8"	10,000#	Pipe Rams
DSA		11" 5M x 13-5/8" 10M	
A-Sec		8-5/8" SOW x 11" 5M	



SIZE	PRESSURE	DESCRIPTION
2"	10,000#	Check Valve
2"	10,000#	Gate Valve
2"	10,000#	Gate Valve

SIZE	PRESSURE	DESCRIPTION
4"	10,000#	Gate Valve
4"	10,000#	HCR Valve

CURRENT WELLBORE SCHEMATIC
CHESAPEAKE OPERATING, INC.



WELL : BILLY STATE 1-15 (PENNZOIL STATE 15-1 RE-ENTRY)

FIELD : LOVINGTON PENN NORTHEAST

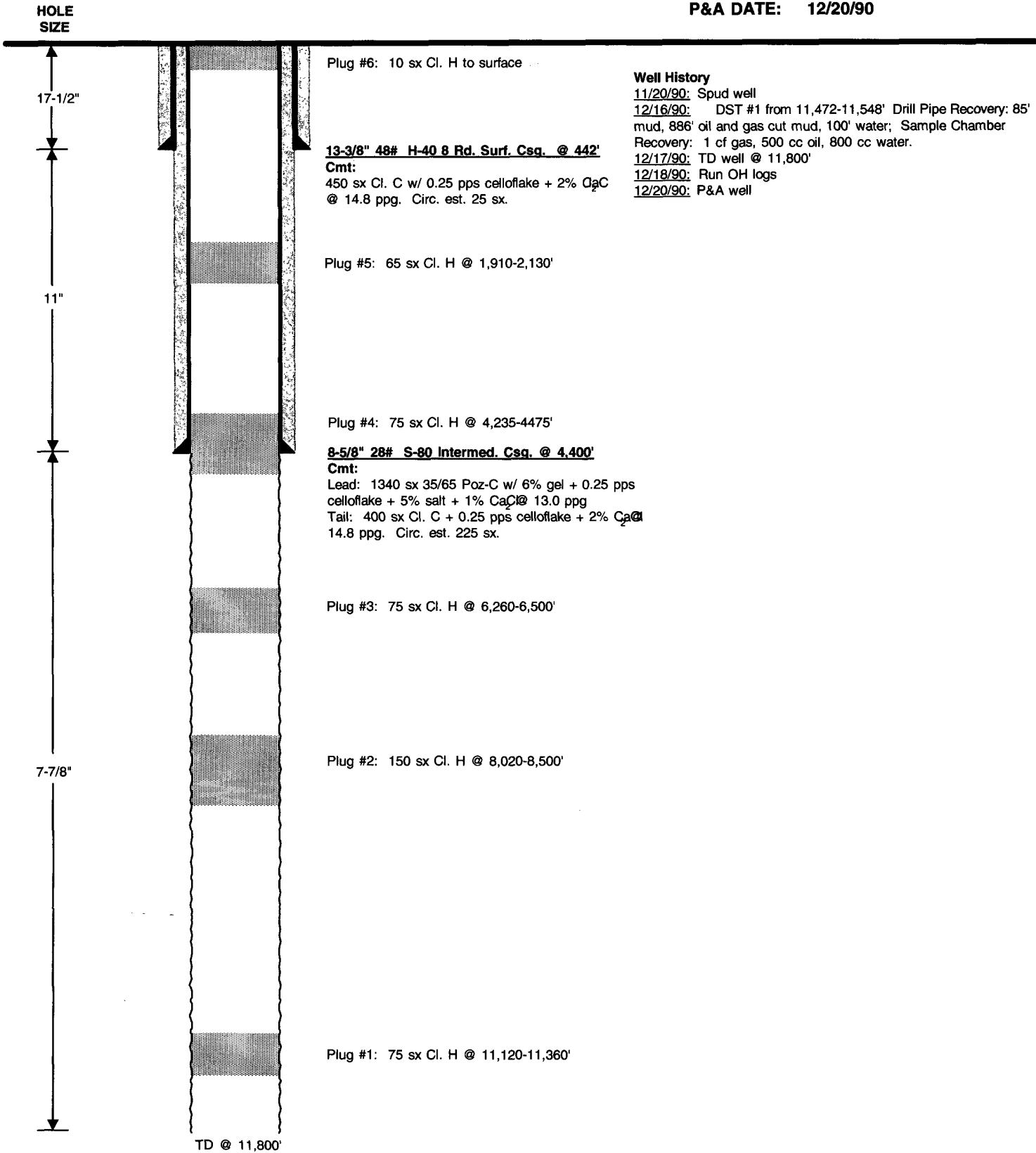
COUNTY : LEA STATE : NEW MEXICO

SURF. LOC. : 1,980' FNL & 810' FWL, SEC. 15-16S-37E

RE BH LOC. : TARGET: 2,310' FNL & 990' FWL, SEC. 15-16S-37E

ELEVATION : GR 3,798' KB 3,812'

API #: 30-025-31063
SPUD DATE: 11/20/90
P&A DATE: 12/20/90



PREPARED BY: Ginni A. Kennedy

APPROVED BY: _____

DATE: 3/12/03

DATE: _____