

DISTRICT I

P.O. Box 1980, Hobbs, NM 88240

DISTRICT II

P.O. Box Drawer DD, Artesia, NM 88210

DISTRICT III

1000 Rio Brazos Rd., Aztec, NM 87410

OIL CONSERVATION DIVISION

P.O. Box 2088

Santa Fe, New Mexico 87504-2088

WELL API NO.	3002531878
5. Indicate Type of Lease	STATE <input checked="" type="checkbox"/> FEE <input type="checkbox"/>
6. State Oil / Gas Lease No.	B-1113-1
7. Lease Name or Unit Agreement Name	VACUUM GLORIETA WEST UNIT
8. Well No.	123
9. Pool Name or Wildcat	VACUUM GLORIETA
10. Elevation (Show whether DF, RKB, RT, GR, etc.) GR-3975', KB-3989'	

SUNDRY NOTICES AND REPORTS ON WELLS
(DO NOT USE THIS FORM FOR PROPOSALS TO DRILL OR TO DEEPEN OR PLUG BACK TO
DIFFERENT RESERVOIR. USE "APPLICATION FOR PERMI
(FORM C-101) FOR SUCH PROPOSALS.

1. Type of Well:	OIL WELL <input type="checkbox"/> GAS WELL <input type="checkbox"/> OTHER WATER INJECTION
2. Name of Operator	CHEVRON USA INC
3. Address of Operator	15 SMITH ROAD, MIDLAND, TX 79705
4. Well Location	Unit Letter <u>C</u> : <u>1265</u> Feet From The <u>NORTH</u> Line and <u>2035</u> Feet From The <u>WEST</u> Line Section <u>6</u> Township <u>18-SO</u> Range <u>35-EA</u> NMPM <u>LEA</u> COUNTY
10. Elevation (Show whether DF, RKB, RT, GR, etc.) GR-3975', KB-3989'	

11. Check Appropriate Box to Indicate Nature of Notice, Report, or Other Data

NOTICE OF INTENTION TO:

PERFORM REMEDIAL WORK ☐ PLUG AND ABANDON ☐
TEMPORARILY ABANDON ☐ CHANGE PLANS ☐
PULL OR ALTER CASING ☐
OTHER: ☐

SUBSEQUENT REPORT OF:

REMEDIAL WORK ☐ ALTERING CASING ☐
COMMENCE DRILLING OPERATION ☐ PLUG AND ABANDONMENT ☐
CASING TEST AND CEMENT JOB ☐
OTHER: ☒ CHANGE OUT INJECTION TBG

12. Describe Proposed or Completed Operations (Clearly state all pertinent details, and give pertinent dates, including estimated date of starting any proposed work) SEE RULE 1103.

3-31-03: MIRU. REL PKR. TIH & PU 2 3/8" TBG TO 629'.

4-02-03: MIRU PU. MOVE IN NEW 2 3/8" TBG 186 JTS 5900'. PU PKR. TIH W/186 JTS 2 3/8" TBG.

4-03-03: CIRC HOLE W/130 BBLS PKR FLUID. SET PKR @ 5897'. TEST CSG & PKR TO 500 PSI. CHART FOR 30 MINS. FOR NMOCD. TEST GOOD.

(ORIGINAL CHART & COPY OF CHART ATTACHED). INSTALLED INJ LINE.

FINAL REPORT



I hereby certify that the information above is true and complete to the best of my knowledge and belief.

SIGNATURE Denise Leake TITLE Regulatory Specialist

DATE 4/24/2003

TYPE OR PRINT NAME Denise Leake

Telephone No. 915-687-7375

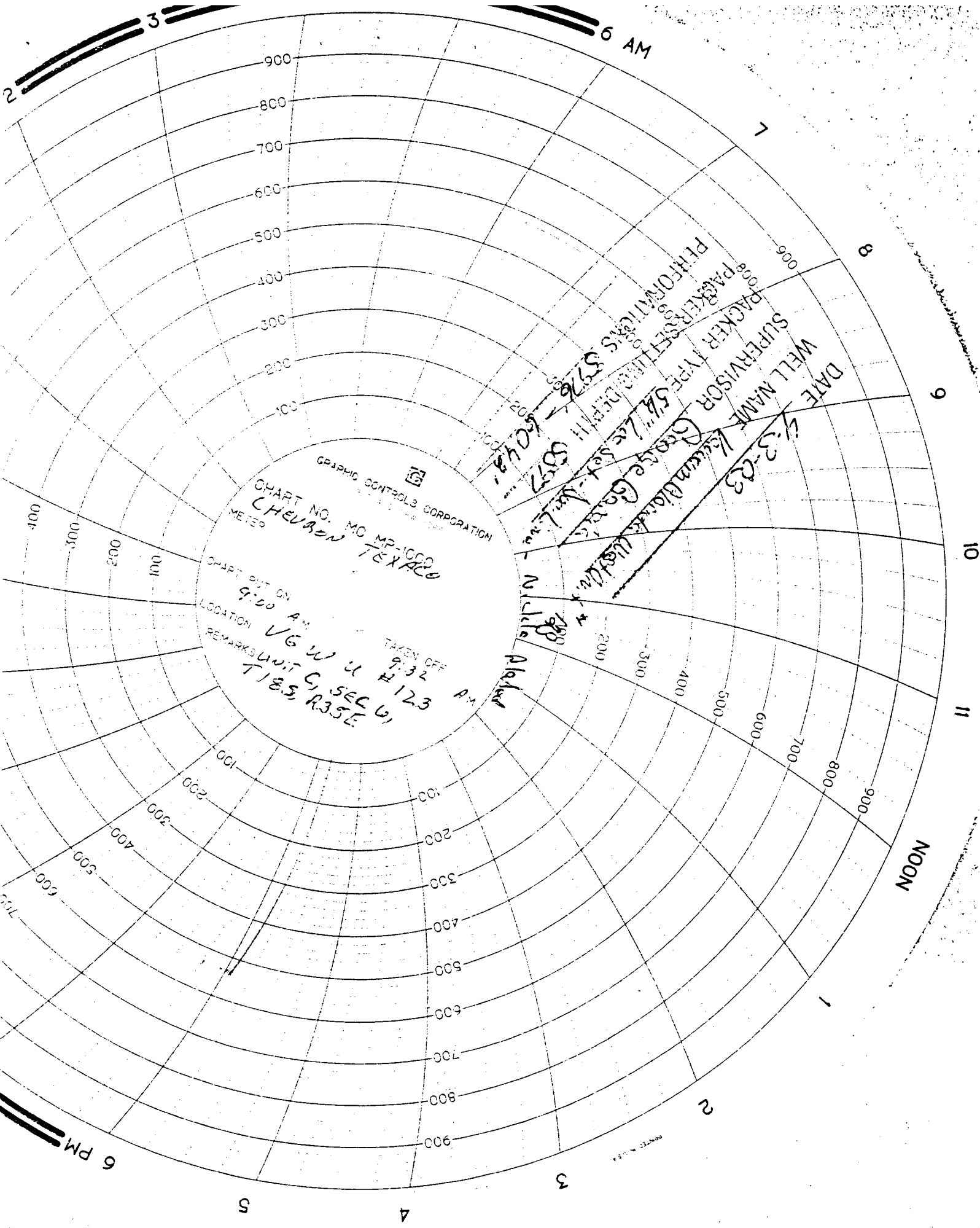
(This space for State Use)

APPROVED Gayle Wink
CONDITIONS OF APPROVAL, IF ANY:

TITLE OC FIELD REPRESENTATIVE II/STAFF MANAGER

DATE

APR 29 2003



GRAPHIC CONTROLS CORPORATION
CHART NO. MC MP-1000
CHEVRON TEXACO

CHART PUT ON 9:00 AM
LOCATION V6 W U SEC 6
REMARKS UNIT C, R35E
T18S, R35E

TAKEN OFF 9:32 AM

DATE 4-3-03
WELL NAME Goose Lake
SUPERVISOR Goose Lake
PACKER TYPE Goose Lake
PERFORMERS 576-5048
577-5048
578-5048
579-5048
580-5048
581-5048
582-5048
583-5048
584-5048
585-5048
586-5048
587-5048
588-5048
589-5048
590-5048
591-5048
592-5048
593-5048
594-5048
595-5048
596-5048
597-5048
598-5048
599-5048
600-5048
601-5048
602-5048
603-5048
604-5048
605-5048
606-5048
607-5048
608-5048
609-5048
610-5048
611-5048
612-5048
613-5048
614-5048
615-5048
616-5048
617-5048
618-5048
619-5048
620-5048
621-5048
622-5048
623-5048
624-5048
625-5048
626-5048
627-5048
628-5048
629-5048
630-5048
631-5048
632-5048
633-5048
634-5048
635-5048
636-5048
637-5048
638-5048
639-5048
640-5048
641-5048
642-5048
643-5048
644-5048
645-5048
646-5048
647-5048
648-5048
649-5048
650-5048
651-5048
652-5048
653-5048
654-5048
655-5048
656-5048
657-5048
658-5048
659-5048
660-5048
661-5048
662-5048
663-5048
664-5048
665-5048
666-5048
667-5048
668-5048
669-5048
670-5048
671-5048
672-5048
673-5048
674-5048
675-5048
676-5048
677-5048
678-5048
679-5048
680-5048
681-5048
682-5048
683-5048
684-5048
685-5048
686-5048
687-5048
688-5048
689-5048
690-5048
691-5048
692-5048
693-5048
694-5048
695-5048
696-5048
697-5048
698-5048
699-5048
700-5048
701-5048
702-5048
703-5048
704-5048
705-5048
706-5048
707-5048
708-5048
709-5048
710-5048
711-5048
712-5048
713-5048
714-5048
715-5048
716-5048
717-5048
718-5048
719-5048
720-5048
721-5048
722-5048
723-5048
724-5048
725-5048
726-5048
727-5048
728-5048
729-5048
730-5048
731-5048
732-5048
733-5048
734-5048
735-5048
736-5048
737-5048
738-5048
739-5048
740-5048
741-5048
742-5048
743-5048
744-5048
745-5048
746-5048
747-5048
748-5048
749-5048
750-5048
751-5048
752-5048
753-5048
754-5048
755-5048
756-5048
757-5048
758-5048
759-5048
760-5048
761-5048
762-5048
763-5048
764-5048
765-5048
766-5048
767-5048
768-5048
769-5048
770-5048
771-5048
772-5048
773-5048
774-5048
775-5048
776-5048
777-5048
778-5048
779-5048
780-5048
781-5048
782-5048
783-5048
784-5048
785-5048
786-5048
787-5048
788-5048
789-5048
790-5048
791-5048
792-5048
793-5048
794-5048
795-5048
796-5048
797-5048
798-5048
799-5048
800-5048
801-5048
802-5048
803-5048
804-5048
805-5048
806-5048
807-5048
808-5048
809-5048
810-5048
811-5048
812-5048
813-5048
814-5048
815-5048
816-5048
817-5048
818-5048
819-5048
820-5048
821-5048
822-5048
823-5048
824-5048
825-5048
826-5048
827-5048
828-5048
829-5048
830-5048
831-5048
832-5048
833-5048
834-5048
835-5048
836-5048
837-5048
838-5048
839-5048
840-5048
841-5048
842-5048
843-5048
844-5048
845-5048
846-5048
847-5048
848-5048
849-5048
850-5048
851-5048
852-5048
853-5048
854-5048
855-5048
856-5048
857-5048
858-5048
859-5048
860-5048
861-5048
862-5048
863-5048
864-5048
865-5048
866-5048
867-5048
868-5048
869-5048
870-5048
871-5048
872-5048
873-5048
874-5048
875-5048
876-5048
877-5048
878-5048
879-5048
880-5048
881-5048
882-5048
883-5048
884-5048
885-5048
886-5048
887-5048
888-5048
889-5048
890-5048
891-5048
892-5048
893-5048
894-5048
895-5048
896-5048
897-5048
898-5048
899-5048
900-5048

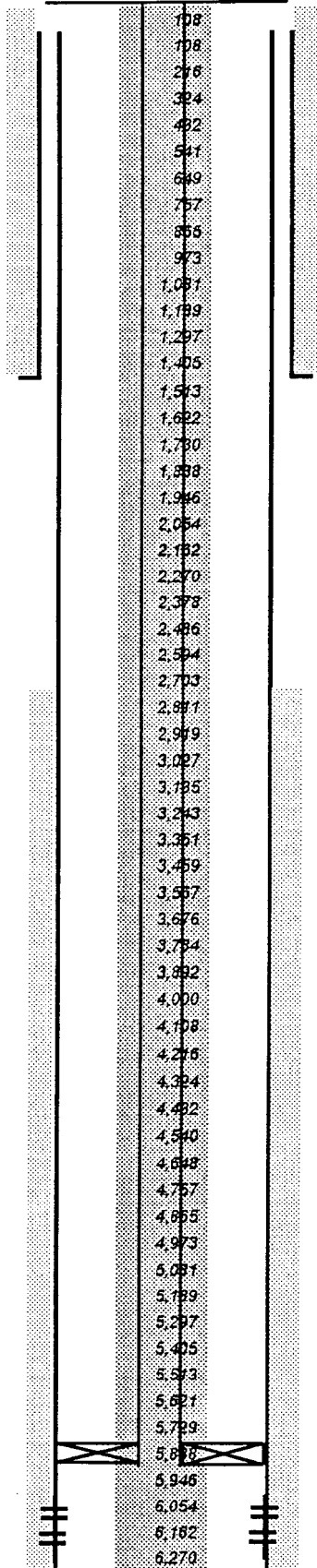
Well: **VGWU 123****VACUUM**

Reservoir:

Location: 1265' FNL
 2035' FWL
Section: 6
TWN 18S
RANGE 35E
County: LEA

Elevations:
GL: 3975'
DF:
KB: 14'

Current
Wellbore Diagram



Well ID Info:
Refno:
API No: 30-025-31878
L5/L6:
Spud Date: 8/6/1993
Compl. Date: 9/15/1993

Surf. Csg: 8 5/8
 24#

Set: @ 1455'
With: 150SX
Hole Size: 11"
Circ: YES
TOC @ SURFACE

Perfs:	Status
5976' TO 6042'	0
	0
	0
	0
	0

Tbg Detail:
KB 14.00'
 186 JTS 2 3/8" DUO-LINE TBG 5879.47'
 5 1/2" 15.5-20# LOC SET PACKER W/
 DUO-LINE & NICKLE PLATED 3.68'
TOTAL 5897.15'

PACKER SET @ 5897.15'

PERFS 5976' TO 6042'

Prod. Csg: 5 1/2
 17-24#
 0
Set @ 6,140'
With: 350SX
Hole Size: 7 7/8"
Circ:
TOC @ 2,700'

COTD:
PBTD: 6,130'
TD: 6,270'

Updated: 31-Mar-03
By: GEORGE GARCIA