

DISTRICT I,
1625 N. FRENCH DR., HOBBBS, NM 86240

DISTRICT II
1301 W. GRAND AVENUE, ARTESIA, NM 88210

DISTRICT III
1000 Rio Brazos Rd., Aztec, NM 87410

DISTRICT IV
1220 S. ST. FRANCIS DR., SANTA FE, NM 87505

State of New Mexico
Energy, Minerals and Natural Resources Department

OIL CONSERVATION DIVISION
1220 SOUTH ST. FRANCIS DR.
Santa Fe, New Mexico 87505

Form C-102
Revised JUNE 10, 2003
Submit to Appropriate District Office
State Lease - 4 Copies
Fee Lease - 3 Copies

WELL LOCATION AND ACREAGE DEDICATION PLAT

☐ AMENDED REPORT

| | | |
|----------------------------|------------------------------------|--|
| API Number 30-025-36903 | Pool Code 3820 | Pool Name BAGLEY; PERMO PENN, NORTH |
| Property Code 34307 | Property Name BAGLEY "16" STATE | Well Number 1 |
| OGRID No. 299137 | Operator Name COG OPERATING LLC | Elevation 4290' |

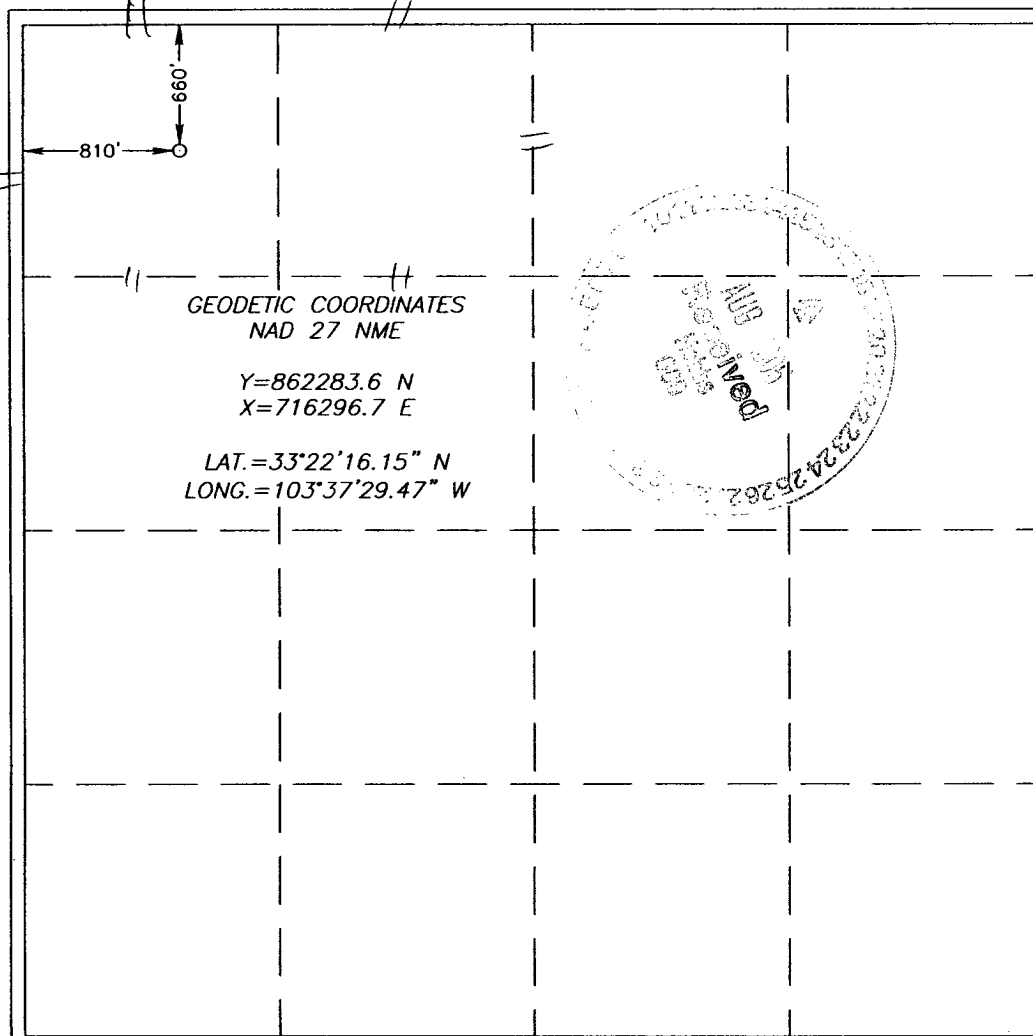
Surface Location

| UL or lot No. | Section | Township | Range | Lot Idn | Feet from the | North/South line | Feet from the | East/West line | County |
|---------------|---------|----------|-------|---------|---------------|------------------|---------------|----------------|--------|
| D | 16 | 11-S | 33-E | | 660 | NORTH | 810 | WEST | LEA |

Bottom Hole Location If Different From Surface

| UL or lot No. | Section | Township | Range | Lot Idn | Feet from the | North/South line | Feet from the | East/West line | County |
|-----------------|-----------------|--------------------|-----------|---------|---------------|------------------|---------------|----------------|--------|
| | | | | | | | | | |
| Dedicated Acres | Joint or Infill | Consolidation Code | Order No. | | | | | | |

NO ALLOWABLE WILL BE ASSIGNED TO THIS COMPLETION UNTIL ALL INTERESTS HAVE BEEN CONSOLIDATED
OR A NON-STANDARD UNIT HAS BEEN APPROVED BY THE DIVISION



| |
|--|
| OPERATOR CERTIFICATION I hereby certify the the information contained herein is true and complete to the best of my knowledge and belief. <i>Phyllis A. Edwards</i> Signature PHYLLIS A. EDWARDS Printed Name REGULATORY ANALYST Title Date |
| SURVEYOR CERTIFICATION I hereby certify that the well location shown on this plat was plotted from field notes of actual surveys made by me or under my supervision, and that the same is true and correct to the best of my belief. SEPTEMBER 30, 2004 Date Surveyed LA REV:10/1/04 Signature & Seal of Professional Surveyor <i>Gary A. Edson</i> 10/1/04 04.11.1201 Certificate No. GARY-EDSON 12641 |