

1000 Rio Brazos Rd., Aztec, NM 87410

Santa Fe, New Mexico 87504-2088

| | |
|---|--|
| WELL API NO. | |
| 30-025-35643 | |
| 5. Indicate Type of Lease | STATE <input type="checkbox"/> FEE <input checked="" type="checkbox"/> |
| 6. State Oil / Gas Lease No. | |
| 7. Lease Name or Unit Agreement Name B. F. HARRISON 'B' | |
| 8. Well No. 28 | |
| 9. Pool Name or Wildcat TGE TUBB N. ASSOC/TGE DRK/ABO N. | |
| Feet From The EAST Line | |
| MPM LEA COUNTY | |

11.

Check Appropriate Box to Indicate Nature of Notice, Report, or Other Data

NOTICE OF INTENTION TO:

| | | | |
|-----------------------|--------------------------|------------------|-------------------------------------|
| PERFORM REMEDIAL WORK | <input type="checkbox"/> | PLUG AND ABANDON | <input type="checkbox"/> |
| TEMPORARILY ABANDON | <input type="checkbox"/> | CHANGE PLANS | <input type="checkbox"/> |
| PULL OR ALTER CASING | <input type="checkbox"/> | | |
| OTHER: | | DHC | <input checked="" type="checkbox"/> |

SUBSEQUENT REPORT OF:

| | | | |
|-----------------------------|--------------------------|----------------------|--------------------------|
| REMEDIAL WORK | <input type="checkbox"/> | ALTERING CASING | <input type="checkbox"/> |
| COMMENCE DRILLING OPERATION | <input type="checkbox"/> | PLUG AND ABANDONMENT | <input type="checkbox"/> |
| CASING TEST AND CEMENT JOB | <input type="checkbox"/> | | |
| OTHER: | <input type="checkbox"/> | | |

12. Describe Proposed or Completed Operations (Clearly state all pertinent details, and give pertinent dates, including estimated date of starting any proposed work) SEE RULE 1103.

CHEVRON U.S.A. INC. RESPECTFULLY STATES ITS INTENTION TO DOWNHOLE COMMINGLE THE TEAGUE DRINKARD ABO NORTH AND THE TEAGUE TUBB N. ASSOCIATED, IN THE SUBJECT WELL AS PRE-APPROVED BY DIVISION ORDER NO. R-11363. THIS COMMINGLING WILL NOT REDUCE THE VALUE OF THE TOTAL REMAINING PRODUCTION. INSTEAD, COMMINGLING WILL ALLOW CHEVRON TO RECOVER ADDITIONAL RESERVES THAT WOULD NOT HAVE BEEN ECONOMICALLY VIABLE TO CAPTURE OTHERWISE.

THE WELL WAS RECOMPLETED IN THE TEAGUE DRINKARD ABO NORTH, POOL CODE 96313, IN DECEMBER OF 2002 WITH A TEST OF 5 OIL, 5 MCF, & 65 WATER. TESTING IN THE TEAGUE TUBB N. ASSOC, POOL CODE 96315, HAS BEEN COMPLETED, WITH THE RBP BEING RELEASED ON 1-29-03.

THE TEST AS OF 2-07-03 WAS 7 OIL, 15 MCF, & 61 WATER. THUS, THE FOLLOWING ALLOCATION SPLITS WILL BE USED:

DRINKARD ABO: 72% OIL, 33% MCF, & 100% WATER
TUBB: 2827% OIL, 67% MCF, & 0% WATER

5-13-03 Amended per DX-47m

THE PERFORATED INTERVALS FOR EACH POOL ARE AS FOLLOWS:

DRINKARD ABO: 6448-7128'
TUBB: 6214-6326'

OWNERSHIP AND PERCENTAGES BETWEEN THE TEAGUE DRINKARD ABO NORTH, AND THE TEAGUE TUBBYN. ASSOC. ARE IDENTICAL FOR THE SPECIFIED WELL AND LEASE.

C-102 PLATS ARE ATTACHED FOR YOUR APPROVAL

DHC Order No. HCB-0056

I hereby certify that the information above is true and complete to the best of my knowledge and belief.

SIGNATURE *Kenneth Teske* TITLE Regulatory Specialist

DATE 4/28/2003

TYPE OR PRINT NAME

Denise Leake

Telephone No. 915-687-7375

(This space for State Use)

APPROVED

CONDITIONS OF APPROVAL, IF ANY:

TITLE

PETROLEUM ENGINEER

DATE _____

MAY 14 2003

DeSoto/Nichols 12-93 ver 1.0

DISTRICT I

F.O. Box 1980, Hobbs, NM 88241-1980

DISTRICT II

P.O. Box Drawer DD, Artesia, NM 88211-0719

DISTRICT III

1000 Rio Brazos Rd., Aztec, NM 87410

DISTRICT IV

P.O. Box 2088, Santa Fe, NM 87504-2088

State of New Mexico

Energy, Minerals and Natural Resources Department

Form C-102

Revised February 10, 199

Instructions on back

Submit to Appropriate District Office

State Lease - 4 Copie

Fee Lease - 3 Copie

☐ AMENDED REPORT**OIL CONSERVATION DIVISION**

P.O. Box 2088

Santa Fe, New Mexico 87504-2088

WELL LOCATION AND ACREAGE DEDICATION PLAT

| | | |
|---|--|--|
| ¹ API Number 30-025-35643 | ² Pool Code 96315 | ³ Pool Name TEAGUE TUBB NORTH ASSOC. |
| ⁴ Property Code 29908 | ⁵ Property Name B. F. HARRISON 'B' | ⁶ Well No. 28 |
| ⁷ OGRID Number 4323 | ⁸ Operator Name CHEVRON USA INC | ⁹ Elevation 3334' GR |

¹⁰ Surface Location

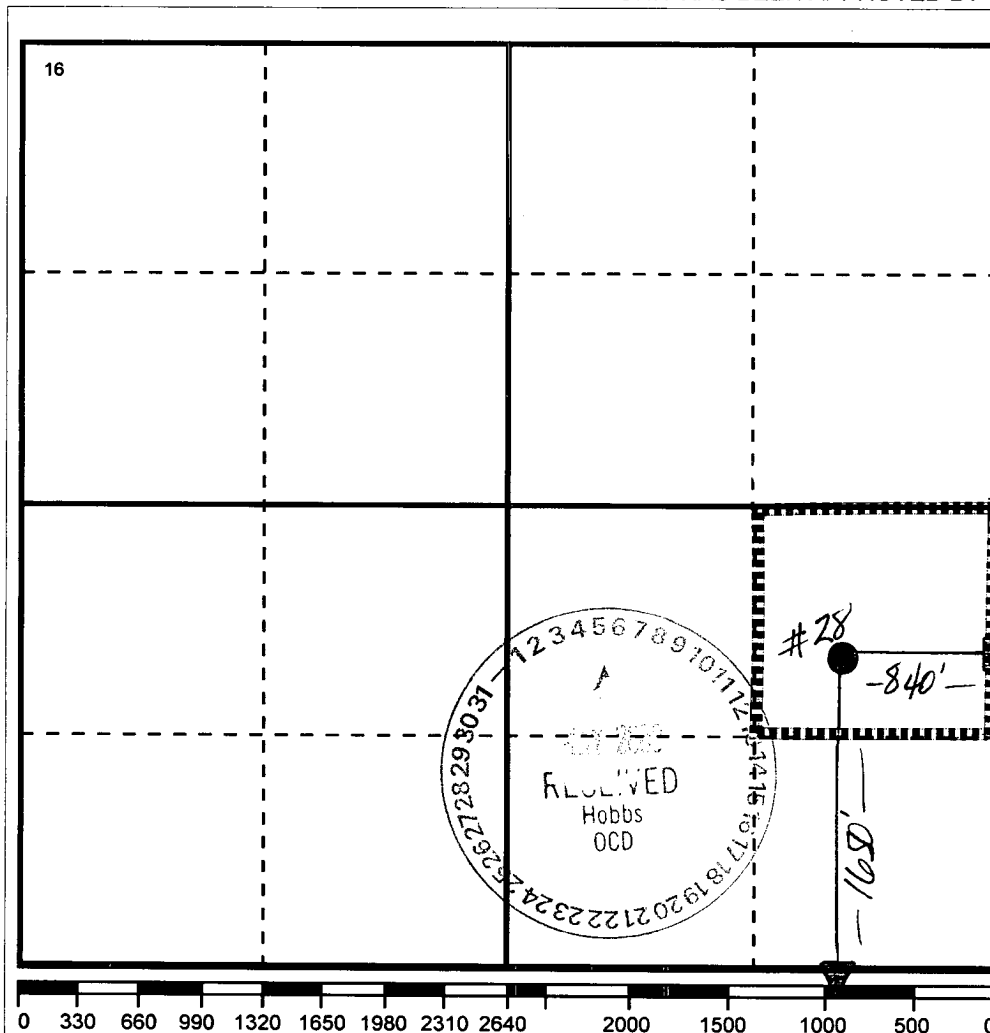
| Ul or lot no | Section | Township | Range | Lot.Idn | Feet From The | North/South Line | Feet From The | East/West Line | County |
|--------------|---------|----------|-------|---------|---------------|------------------|---------------|----------------|--------|
| I | 5 | 23-S | 37-E | | 1650' | SOUTH | 840' | EAST | LEA |

¹¹ Bottom Hole Location If Different From Surface

| Ul or lot no. | Section | Township | Range | Lot.Idn | Feet From The | North/South Line | Feet From The | East/West Line | County |
|---------------|---------|----------|-------|---------|---------------|------------------|---------------|----------------|--------|
|---------------|---------|----------|-------|---------|---------------|------------------|---------------|----------------|--------|

| | | | |
|------------------------------------|-------------------------------------|----------------------------------|-------------------------|
| ¹² Dedicated Acre 40 | ¹³ Joint or Infill No | ¹⁴ Consolidation Code | ¹⁵ Order No. |
|------------------------------------|-------------------------------------|----------------------------------|-------------------------|

NO ALLOWABLE WILL BE ASSIGNED TO THIS COMPLETION UNTIL ALL INTERESTS HAVE BEEN CONSOLIDATED
OR A NON-STANDARD UNIT HAS BEEN APPROVED BY THE DIVISION

¹⁷ OPERATOR CERTIFICATION

I hereby certify that the information contained herein is true and complete to the best of my knowledge and belief

Signature

Danise Leake

Printed Name

Danise Leake

Positio

Regulatory Specialist

Date

4/28/2003

¹⁸ SURVEYOR CERTIFICATION

I hereby certify that the well location shown on this plat was plotted from field notes of actual surveys made by me or under my supervision, and that the same is true and correct to the best of my knowledge and belief.

Date Surveyed

Signature & Seal of

Professional Surveyor

Certificate No.

DISTRICT I
P.O. Box 1980, Hobbs, NM 88241-1980

DISTRICT II
P.O. Box Drawer DD, Artesia, NM 88211-0719

DISTRICT III
1000 Rio Brazos Rd., Aztec, NM 87410

DISTRICT IV
P.O. Box 2088, Santa Fe, NM 87504-2088

State of New Mexico
Energy, Minerals and Natural Resources Department

OIL CONSERVATION DIVISION

P.O. Box 2088
Santa Fe, New Mexico 87504-2088

Form C-102
Revised February 10, 1999
Instructions on back
Submit to Appropriate District Office
State Lease - 4 Copies
Fee Lease - 3 Copies
☐ AMENDED REPORT

WELL LOCATION AND ACREAGE DEDICATION PLAT

| | | |
|---|--|---|
| ¹ API Number 30-025-35643 | ² Pool Code 96313 | ³ Pool Name TEAGUE DRINKARD ABO NORTH |
| ⁴ Property Code 29908 | ⁵ Property Name B. F. HARRISON 'B' | ⁶ Well No. 28 |
| ⁷ OGRID Number 4323 | ⁸ Operator Name CHEVRON USA INC | ⁹ Elevation 3334' GR |

¹⁰ Surface Location

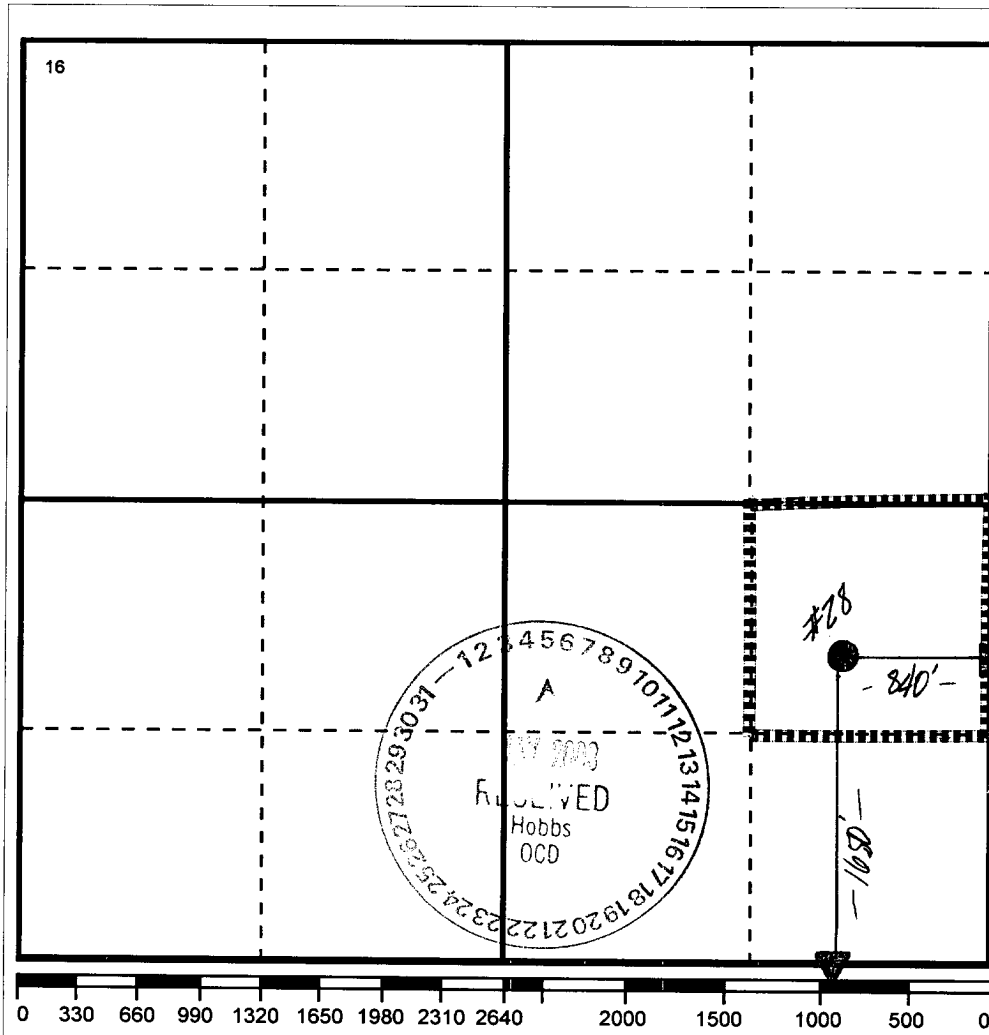
| UI or lot no | Section | Township | Range | Lot.Idn | Feet From The | North/South Line | Feet From The | East/West Line | County |
|--------------|---------|----------|-------|---------|---------------|------------------|---------------|----------------|--------|
| I | 5 | 23-S | 37-E | | 1650' | SOUTH | 840' | EAST | LEA |

¹¹ Bottom Hole Location If Different From Surface

| UI or lot no. | Section | Township | Range | Lot.Idn | Feet From The | North/South Line | Feet From The | East/West Line | County |
|---------------|---------|----------|-------|---------|---------------|------------------|---------------|----------------|--------|
|---------------|---------|----------|-------|---------|---------------|------------------|---------------|----------------|--------|

| | | | |
|------------------------------------|-------------------------------------|----------------------------------|-------------------------|
| ¹² Dedicated Acre 40 | ¹³ Joint or Infill No | ¹⁴ Consolidation Code | ¹⁵ Order No. |
|------------------------------------|-------------------------------------|----------------------------------|-------------------------|

NO ALLOWABLE WILL BE ASSIGNED TO THIS COMPLETION UNTIL ALL INTERESTS HAVE BEEN CONSOLIDATED
OR A NON-STANDARD UNIT HAS BEEN APPROVED BY THE DIVISION



17 OPERATOR CERTIFICATION

I hereby certify that the information contained herein is true and complete to the best of my knowledge and belief

Signature

Printed Name

Denise Leake

Positio

Regulatory Specialist

Date

4/28/2003

18 SURVEYOR CERTIFICATION

I hereby certify that the well location shown on this plat was plotted from field notes of actual surveys made by me or under my supervision, and that the same is true and correct to the best of my knowledge and belief.

Date Surveyed

Signature & Seal of
Professional Surveyor

Certificate No.