

Submit 3 copies
to Appropriate
District Office

State of New Mexico
Energy, Minerals and Natural Resources Department

Form C-103
Revised 1-1-89

DISTRICT I

P.O. Box 1980, Hobbs, NM 88240

DISTRICT II

P.O. Box Drawer DD, Artesia, NM 88210

DISTRICT III

1000 Rio Brazos Rd., Aztec, NM 87410

OIL CONSERVATION DIVISION

P.O. Box 2088

Santa Fe, New Mexico 87504-2088

WELL API NO.	30-025-24328
5. Indicate Type of Lease	STATE <input checked="" type="checkbox"/> FEE <input type="checkbox"/>
6. State Oil / Gas Lease No.	B-1189-1
7. Lease Name or Unit Agreement Name	VACUUM GRAYBURG SAN ANDRES UNIT
8. Well No.	15
9. Pool Name or Wildcat	VACUUM GRAYBURG SAN ANDRES
10. Elevation (Show whether DF, RKB, RT, GR, etc.)	4009' GR

SUNDY NOTICES AND REPORTS ON WELLS
(DO NOT USE THIS FORM FOR PROPOSALS TO DRILL OR TO DEEPEN OR PLUG BACK TO
DIFFERENT RESERVOIR. USE "APPLICATION FOR PERMI
(FORM C-101) FOR SUCH PROPOSALS.

1. Type of Well: OIL WELL ☐ GAS WELL ☒ OTHER INJECTION

2. Name of Operator
CHEVRON USA INC

3. Address of Operator
15 SMITH RD, MIDLAND, TX 79705

4. Well Location
Unit Letter J : 1400 Feet From The SOUTH Line and 2450 Feet From The EAST Line
Section 2 Township 18S Range 34E NMPM LEA COUNTY

11. Check Appropriate Box to Indicate Nature of Notice, Report, or Other Data

NOTICE OF INTENTION TO:

PERFORM REMEDIAL WORK ☐ PLUG AND ABANDON ☐
TEMPORARILY ABANDON ☐ CHANGE PLANS ☐
PULL OR ALTER CASING ☐
OTHER: ☐

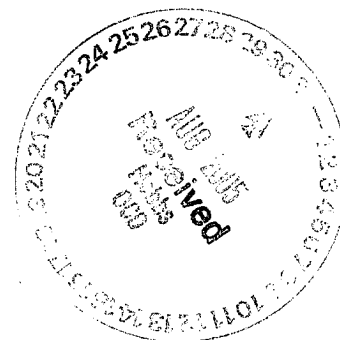
SUBSEQUENT REPORT OF:

REMEDIAL WORK ☐ ALTERING CASING ☐
COMMENCE DRILLING OPERATION ☐ PLUG AND ABANDONMENT ☐
CASING TEST AND CEMENT JOB ☐
OTHER: ☐ CHANGE TBG, STIMULATE ☒

12. Describe Proposed or Completed Operations (Clearly state all pertinent details, and give pertinent dates, including estimated date of starting any proposed work) SEE RULE 1103.

PLEASE SEE ATTACHED SUMMARY & CHART

(8-09-05 THRU 8-23-05)



I hereby certify that the information above is true and complete to the best of my knowledge and belief.

SIGNATURE Denise Pinkerton TITLE Regulatory Specialist

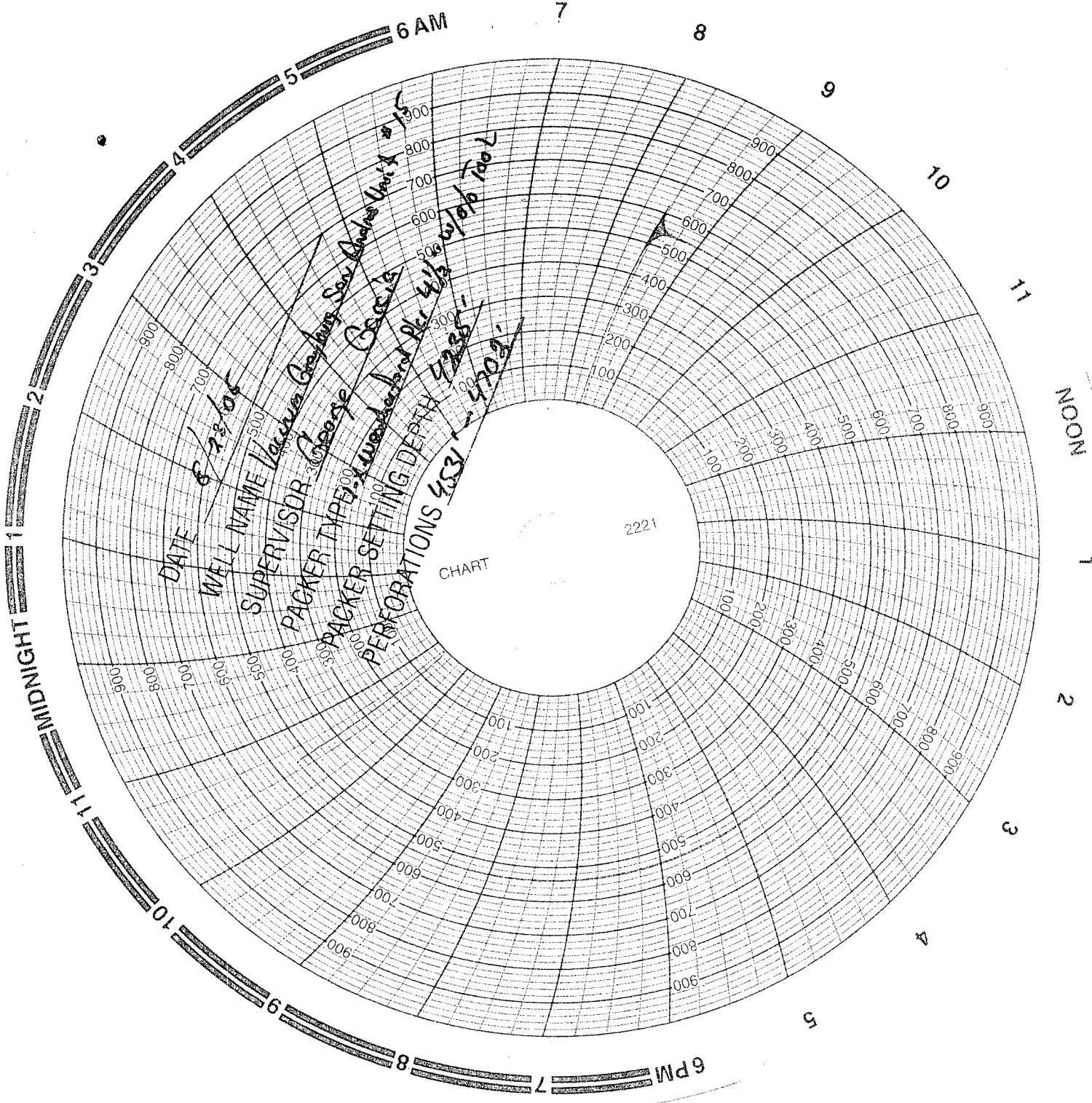
DATE 8/30/2005

TYPE OR PRINT NAME Denise Pinkerton

Telephone No. 432-687-7375

(This space for State Use)

APPROVED Gary W. Wink TITLE OC FIELD REPRESENTATIVE II / STAFF MANAGER DATE SEP 06 2005
CONDITIONS OF APPROVAL, IF ANY:



DATE

WELL NAME

SUPERVISOR

PACKER TYPE

PACKER SETTING DEPTH

PERFORATIONS

CHART

2221

6 AM

7

8

9

10

11

NOON

1

2

3

4

5

6 PM

7

8

9

10

11

MIDNIGHT

8-23-05

CIT 0500W 245A ZWC.

V. G. S. 4 11. 110, 15

4 1/2 259, 9.5

P.B. T.D. 4702.00

P.B. 4531 - 4702.00

134 JTS 238 - 7.55 - Denham

Pkr. 4 1/2 Nickel Plate 1-X Arrow Set 7.55 Ft. 4303.90

1.50 Nickel Nipple

Pkr. Set W/ 9.00 Ft. K.B. (A) 4235.86

W/ ON + OFF Tool

Date	Daily Operations
09-AUG-2005	TRAVEL TIME, ATTEND TAILGATE SAFETY MEETING, REVIEW JSA'S. ANCHORS OUT DATED, CALLED HOBBS ANCHORS TO TEST. SPOT RIG ON LOCATION. MIRU WEATHERFORD REVERSE UNIT. MOVE IN 2 FRAC TKS, HOOK UP FLOW BACK LINE. WAITED 2 HOURS ON POOL TRANSPORT TRUCKS W/10# BRINE. (TRUCKS BROKE DOWN). TBG PRESS=550#, FLOWED BACK TO FRAC TKS, PMP 25 BBLS 10# BRINE DOWN TBG KILL WELL. RIG UP KEY PULLING UNIT #323. MOVE IN 1 SET PIPE RACKS. ND WELL HEAD & NU BOP. RELEASE PKR, TOH LD 6 JTS 2 3/8" DUO-LINE TBG. SHUT DOWN PREP TO PULL LD TBG & PKR
10-AUG-2005	TRAVEL TIME, TAILGATE SAFETY MEETING, REVIEW JSA'S PICKUP BIT 3 7/8" X .30', BIT SUB 1.30' X 3 3/16" OD X 1 5/16" ID, & 6-3 1/16" OD X 1 9/16" ID X 180.80', TOP SUB 3 1/16" OD X 1 9/16" ID X .85'. PICKUP BIT 3 7/8" X .30', BIT SUB 1.30' X 3 3/16" OD X 1 5/16" ID, & 6-3 1/16" OD X 1 9/16" ID X 180.80', TOP SUB 3 1/16" OD X 1 9/16" ID X .85'. LUNCH CONTINUE PICKING UP 2-3/8" L-80 WS 146 JTS 2 3/8" L80. TAG @ 4737'. TOH W/16 JTS 23/8" WS TO 4235'. SHUT DOWN PREP TO C/O 23' TO 4761'
11-AUG-2005	TRAVEL TIME, ATTEND TAILGATE SAFETY MEETING, REVIEW JSA'S. PRESS 150#, DLED PRESS OFF, LOWER BIT TO TAG @ 4737'. PU SWIVEL, BROKE CIRC, C/O TO 4746', 9', QUIT MAKING HOLE (HARD). TOH W/BIT. LD BIT & DC. TIH OPEN ENDED TO 4613' 148 JTS, SPOT 10 SACKS 20/40 SAND, FLUSH W/14 BBLS WATER, PULL UP TO 4300'.
12-AUG-2005	TRAVEL TIME, ATTEND TAILGATE SAFETY MEETING, REVIEW JSA'S. WELL PRESS=0#, TIH TAG SAND @ 4741', TOH TO 4613', SPOT 12 SACK SAND. TOH TO 4114'. SHUT DOWN WAIT ON SAND TO FALL. TIH TAG SAND @ 4690', PU SWIVEL WASH SAND BACK TO 4710'. DISPLACE HOLE W/100 BBLS FW. TOH TO 3086'. SHUT DOWN 2 HOURS (LIGHTING). SHUT DOWN PREP TO SPOT CMT CAP.
15-AUG-2005	TRAVEL TIME, ATTEND TAILGATE SAFETY MEETING, REVIEW JSA'S. WELL PRESS=150#, TIH TAG 4710', PULL UP TO 4700', DISPLACE HOLE W/100 BBLS FW. TIH W/ TBG. TIH W/ BUMP BAILURE 3" X 30' IN 4 1/2" CSG. WAIT ON CMT. TIH W/2 3/8" TBG TO TAG CMT @ 4707'. TIH ABOVE PERFS 4489'. SHUT DOWN PREP TO SPOT CMT
16-AUG-2005	TRAVEL TIME, ATTEND TAILGATE SAFETY MEETING, REVIEW JSA'S. WELL PRESS=150#, TIH 2 1/2 3/8" TBG TO TAG CNT @ 4707'. DISPLACE HOLE W/ FRESH WATER 100 BBLS. TOH W/151 JTS & BIT TIH W/3 1/2" X 32' BAILURE IN 4 1/2" CSG, 7 RUNS. TIH W/2 3/8" TBG & BIT TO 4053'. WAITING ON CMT CONTINUE TIH W/TBG TO TAG CMT @ 4702'. TOH W/2 3/8" TBG TO 3492'. SHUT DOWN PREP TO TAG CMT
17-AUG-2005	TRAVEL TIME, ATTEND TAILGATE SAFETY MEETING, REVIEW JSA'S.

Well ID: FH0778	Project No: 2	Rig: KEY	State: NM	Twn: 18S	Sec: 2	Rng: 34E	
Field: VACUUM	Lease: VGSAU	Well No: 15	Rpt Date: 29-AUG-2005	Page: 1	of 2		

Date	Daily Operations
	<p>WELL PRESS=120#, TIH WBIT TAG CMT 4702' (HARD), TOH W3 7/8" BIT 151 1 JTS. TIH W4 1/2" MODEL R PKR 7', SN 2 3/8" X 1.10', TBG 136. LOAD BACK SIDE TO 500#, WAITING ON SCHLUMBERGER. ACID JOB CANCELED, (SCHLUMBERGER PUMP IN FOR REPAIRS). PREP TO ACIDIZE IN MORNING</p>
18-AUG-2005	<p>TRAVEL TIME, ATTEND TAILGATE SAFETY MEETING, REVIEW JSA'S. WELL PRESS=120#, BLED WELL BACK TO FRAC TKS. JSA MEETING, MIRU SCHLUMBERGER TO ACIDIZE IN 4 1/2" CSG FROM 4531' TO 4702'. W6,000 GALS 15% ACID 3 STAGES & 4,000# ROCK SALT 2 STAGES. 1# STAGE ACID 2,000 GALS 15% ACID 1ST STAGE ROCK SALT 2,000#, 1345# TO 1995#, 2ND STAGE ACID 2,00 GALS 15% ACID, 2ND STAGE ROCK SALT 2,000#, 1812# TO 2833#, 3RD STAGE ACID 2,000 GALS ACID, FLUSH W28 BBLs FRESH WATER. SHUT WELL IN 1 HOUR. RIG DOWN SCHLUMBERGER MAX PRESS=2833 MIN PRESS=718 AVG PRESS=1453 AVG RATE=5.2 ISIP=1460 5-MIN SI=1176 10-MIN SI=1070 15-MIN SI=1011 TFTR=170 FLOW BACK 175 BBLs IN 5 HOURS. RELEASE PKR PULL UP TO 4232' 10' & RETEST BACK SIDE TO 540# (GOOD). SHUT DOWN PREP TO C/O ROCK SALT. PRODUCTS: INHIBITOR AID A179 18 LBS, CORROSION INHIBITOR A264 12 GALS, SLURRY GEL B142 20 GALS, ACID HYDROCHLORIC 15% H15 6,000 GALS, DIVERTING AGENT FIXAFRAC J66 4,000#, REDUCING AGENT L63 36 GALS, NON-EMULSIFYING AGENT W53 12 GALS,</p>
19-AUG-2005	<p>TRAVEL TIME, ATTEND TAILGATE SAFETY MEETING, REVIEW JSA'S. WELL PRESS=120#, RELEASE PKR @ 4232', DISPLACE HOLE W175 BBLs 10# BRINE. TOH W136 JTS & PKR. TIH W3 7/8" BIT & 151 JTS 2 3/8" TBG TO TAG @ 4702'. (NO FILL) (PBD 4702') LUNCH, SAFETY MEETING, TOH LD 2 3/8" W.S. 76 JTS TO 2369'. SHUT DOWN PREP TO RUN PROD</p>
22-AUG-2005	<p>TRAVEL TIME, ATTEND TAILGATE SAFETY MEETING, REVIEW JSA'S. WELL PRESS=0#, DISPLACE HOLE W175 BBLs 10# BRINE, TOH LD 75 JTS 2 3/8" WS. EL FARMERS MOVE WS TO CVU #45 159 JTS, MOVED IN 137 JTS 2 3/8" IPC TBG, MOVED OUT 135 JTS 2 3/8" DUO-LINE TBG TO 1788 YARD. PU TIH W4 1/2" X 6.65', NICKLE PLATED 1-X ARROW SET WEATHERFORD PKR, O/O TOOL 1.70', PRO FILE NIPPLE 1.5" ID, 134 JTS 2 3/8" IPC TBG 4218'. SET PKR @ 4235' W9' KB. PULLED OFF O/O TOOL, CIRC PKR FLUID. LOAD & TEST BACK SIDE, PRE TEST TO 500# (GOOD). SHUT DOWN PREP TO ND BOP-NU WELL HEAD-TEST FOR OCD.</p>
23-AUG-2005	<p>TRAVEL TIME, ATTEND TAILGATE SAFETY MEETING, REVIEW JSA'S. ND BOPS & NU WELL HEAD. RD PULLING UNIT & REVERSE UNIT. CLEAN LOCATION MOVE TO CVU #45 FINAL REPORT</p>

Well ID: FH0778	Project No: 2	Rig: KEY	State: NM	Twn: 18S	Sec: 2	Rng: 34E	
Field: VACUUM	Lease: VGSAU	Well No: 15	Rpt Date: 29-AUG-2005	Page: 2	of 2		