

District I  
1625 N. French Dr., Hobbs, NM 88240  
District II  
1301 W. Grand Avenue, Artesia, NM 88210  
District III  
1000 Rio Brazos Road, Aztec, NM 87410  
District IV  
1220 S. St. Francis Dr., Santa Fe, NM 87505

State of New Mexico  
Energy Minerals and Natural Resources

Form C-101  
May 27, 2004

Oil Conservation Division  
1220 South St. Francis Dr.  
Santa Fe, NM 87505

Submit to appropriate District Office

☐ AMENDED REPORT

**APPLICATION FOR PERMIT TO DRILL, RE-ENTER, DEEPEN, PLUGBACK, OR ADD A ZONE**

|  |  |   |
|--|--|---|
| <sup>1</sup> Operator Name and Address<br>PATTERSON PETROLEUM LP<br>P.O. DRAWER 1416<br>SNYDER, TX 79550 |  | <sup>2</sup> OGRID Number<br>141928         |
| <sup>3</sup> Property Code<br>35069  | <sup>5</sup> Property Name<br>PADDY 27 STATE | <sup>4</sup> API Number<br>30 - 025 - 37441 |
| <sup>9</sup> Proposed Pool 1<br>Seamex WILDCAT, PADDOCK 37800  |  | <sup>6</sup> Well No.<br>1                  |
| <sup>10</sup> Proposed Pool 2  |  |   |

**7 Surface Location**

| UL or lot no. | Section | Township           | Range | Lot Idn | Feet from the | North/South line | Feet from the | East/West line | County |
|---------------|---------|--------------------|-------|---------|---------------|------------------|---------------|----------------|--------|
| E             | 27      | 17- <del>E</del> S | 33-E  |         | 1800          | NORTH            | 443           | WEST           | LEA    |

**8 Proposed Bottom Hole Location If Different From Surface**

| UL or lot no. | Section | Township | Range | Lot Idn | Feet from the | North/South line | Feet from the | East/West line | County |
|---------------|---------|----------|-------|---------|---------------|------------------|---------------|----------------|--------|
|               |         |          |       |         |               |                  |               |                |        |

**Additional Well Information**

|  |                                       |   |   |   |
|--|---------------------------------------|---|---|---|
| <sup>11</sup> Work Type Code<br>N  | <sup>12</sup> Well Type Code<br>O     | <sup>13</sup> Cable/Rotary<br>ROTARY            | <sup>14</sup> Lease Type Code<br>S        | <sup>15</sup> Ground Level Elevation<br>4166' |
| <sup>16</sup> Multiple<br>NO   | <sup>17</sup> Proposed Depth<br>6500' | <sup>18</sup> Formation<br>PADDOCK              | <sup>19</sup> Contractor<br>PATTERSON-UTI | <sup>20</sup> Spud Date<br>10/15/05           |
| Depth to Groundwater<br>150'   |                                       | Distance from nearest fresh water well<br>4000' |   | Distance from nearest surface water<br>NONE   |
| Pit: Liner: Synthetic X <input checked="" type="checkbox"/> 12 _____mils thick Clay <input type="checkbox"/> Pit Volume: 11,000bbls Drilling Method:<br>Closed-Loop System <input type="checkbox"/> Fresh Water <input checked="" type="checkbox"/> Brine X <input checked="" type="checkbox"/> Diesel/Oil-based <input type="checkbox"/> Gas/Air <input type="checkbox"/> |                                       |   |   |   |

**21 Proposed Casing and Cement Program**

| Hole Size | Casing Size | Casing weight/foot | Setting Depth | Sacks of Cement | Estimated TOC |
|-----------|-------------|--------------------|---------------|-----------------|---------------|
| 12-1/4"   | 8-5/8"      | 24                 | 1500'         | 1000            | SURFACE       |
| 7-7/8"    | 5-1/2"      | 17                 | 6500'         | 2000            | SURFACE       |
|           |             |                    |               |                 |               |
|           |             |                    |               |                 |               |
|           |             |                    |               |                 |               |

<sup>22</sup> Describe the proposed program. If this application is to DEEPEN or PLUG BACK, give the data on the present productive zone and proposed new productive zone. Describe the blowout prevention program, if any. Use additional sheets if necessary.

DRILLING FLUID SYNOPSIS ATTACHED.

BOP: SHAFFER 11" 3000 PSI. SEE FIGURE 2.5.

ADDITIONAL CASING & CEMENTING INFORMATION ATTACHED

Permit Expires 1 Year From Approval  
Date Unless Drilling Underway



|  |  |  |  |
|--|--|--|--|
| <sup>23</sup> I hereby certify that the information given above is true and complete to the best of my knowledge and belief. I further certify that the drilling pit will be constructed according to NMOCD guidelines X <input checked="" type="checkbox"/> , a general permit <input type="checkbox"/> , or an (attached) alternative OCD-approved plan <input type="checkbox"/> . |  | <b>OIL CONSERVATION DIVISION</b>                         |  |
| Printed name: NOLAN VON ROEDER   |  | Approved by:   |  |
| Title: ENGINEER  |  | Title: PETROLEUM ENGINEER                                |  |
| E-mail Address: vonroeder@patenergy.com  |  | Approval Date: SEP 07 2005                               |  |
| Date: 08/26/05   |  | Expiration Date:   |  |
| Phone: 325/573-1938  |  | Conditions of Approval Attached <input type="checkbox"/> |  |



# PATTERSON PETROLEUM LP

A LIMITED PARTNERSHIP

P.O. Box 1416, Snyder, TX 79550

4510 Lamesa Hwy., Snyder, TX 79549

Phone: 325-573-1938 • Fax 325-573-1939

## DRILLING FLUID SYNOPSIS

PATTERSON PETROLEUM LP

Paddy "27" State No. 1

Section 27

T-17-S

R-33-E

Lea County, New Mexico

## CASING

8 5/8" at 1,500'

5 1/2" at 6,500'

| DEPTH         | MUD WT.    | VISCOSITY | FLUID LOSS | DRILL SOLIDS | COMMENTS                      |
|---------------|------------|-----------|------------|--------------|-------------------------------|
| 0' - 1500'    | 8.4 to 9.0 | 28 to 40  | No Control | 5%           | Fresh Water, Spud mud & paper |
| 1500' - 5600' | 10 to 10.3 | 28 to 33  | No Control | 1%           | Brine water, paper, caustic   |
| 5600 - 6,500' | 10 to 10.3 | 36 to 46  | 10 - 15 cc | < 5%         | Salt Gel, Starch & Caustic    |

PATTERSON PETROLEUM LP  
PROPOSED CASING & CEMENTING PROGRAM

Paddy "27" State Well No. 1

8 5/8", 24 lb/ft, J-55 Surface Casing Set at 1500' - in a 12 1/4" Hole

Circulate to surface with :

Lead : 750 sx of HLC w/ 6% gel, 2% CCL + ¼ #/sk celloflake

|                    |               |
|--------------------|---------------|
| Slurry Weight:     | 12.5 ppg      |
| Slurry Yield:      | 1.95 cu.ft/sk |
| Water Requirement: | 10.9 gal/sk   |

Tail: 250 sx of Class "C" w/ 1% CCL + ¼ #/sk celloflakes

|                    |               |
|--------------------|---------------|
| Slurry Weight:     | 14.8 ppg      |
| Slurry Yield:      | 1.32 cu.ft/sk |
| Water Requirement: | 6.31 gal/sk   |

5½", 17 lb/ft, J-55 Production Casing Set at 6,500' - in a 7 7/8" Hole

Desired TOC = surface

Lead : 1600 sx of Class "C" Halliburton Lite + ¼ #/sk celloflake

|                    |               |
|--------------------|---------------|
| Slurry Weight:     | 12.7 ppg      |
| Slurry Yield:      | 1.84 cu.ft/sk |
| Water Requirement: | 9.9 gal/sk    |

Tail : 400 sx of "C" 50/50 Poz w/ .5% LAP1+ .3% CFR3 + 3 #/sk salt + 2% gel

|                    |               |
|--------------------|---------------|
| Slurry Weight:     | 13.9 ppg      |
| Slurry Yield:      | 1.39 cu.ft/sk |
| Water Requirement: | 6.5 gal/sk    |

**Fig. 2.5. Class 3 BOP and Choke Manifold.**

## State of New Mexico

## DISTRICT I

1625 N. FRENCH DR., HOBBS, NM 88240

Energy, Minerals and Natural Resources Department

Form C-102

Revised JUNE 10, 2003

## DISTRICT II

1301 W. GRAND AVENUE, ARTESIA, NM 88210

## OIL CONSERVATION DIVISION

Submit to Appropriate District Office

State Lease - 4 Copies

Fee Lease - 3 Copies

1220 SOUTH ST. FRANCIS DR.

Santa Fe, New Mexico 87505

## DISTRICT III

1000 Rio Brazos Rd., Aztec, NM 87410

## DISTRICT IV

1620 S. ST. FRANCIS DR., SANTA FE, NM 87505

## WELL LOCATION AND ACREAGE DEDICATION PLAT

☐ AMENDED REPORT

|                                   |   |                                 |   |
|-----------------------------------|---|---------------------------------|---|
| API Number<br><b>30-025-37441</b> |   | Pool Code<br><b>97417 37800</b> | Pool Name<br><b>Jeames WILDCAT; PADDOCK</b> |
| Property Code<br><b>35069</b>     | Property Name<br><b>PADDY 27 STATE</b>          |                                 | Well Number<br><b>1</b>                     |
| OGRID No.<br><b>141928</b>        | Operator Name<br><b>PATTERSON PETROLEUM, LP</b> |                                 | Elevation<br><b>4166'</b>                   |

## Surface Location

| UL or lot No. | Section | Township | Range | Lot Idn | Feet from the | North/South line | Feet from the | East/West line | County |
|---------------|---------|----------|-------|---------|---------------|------------------|---------------|----------------|--------|
| E             | 27      | 17-S     | 33-E  |         | 1800          | NORTH            | 443           | WEST           | LEA    |

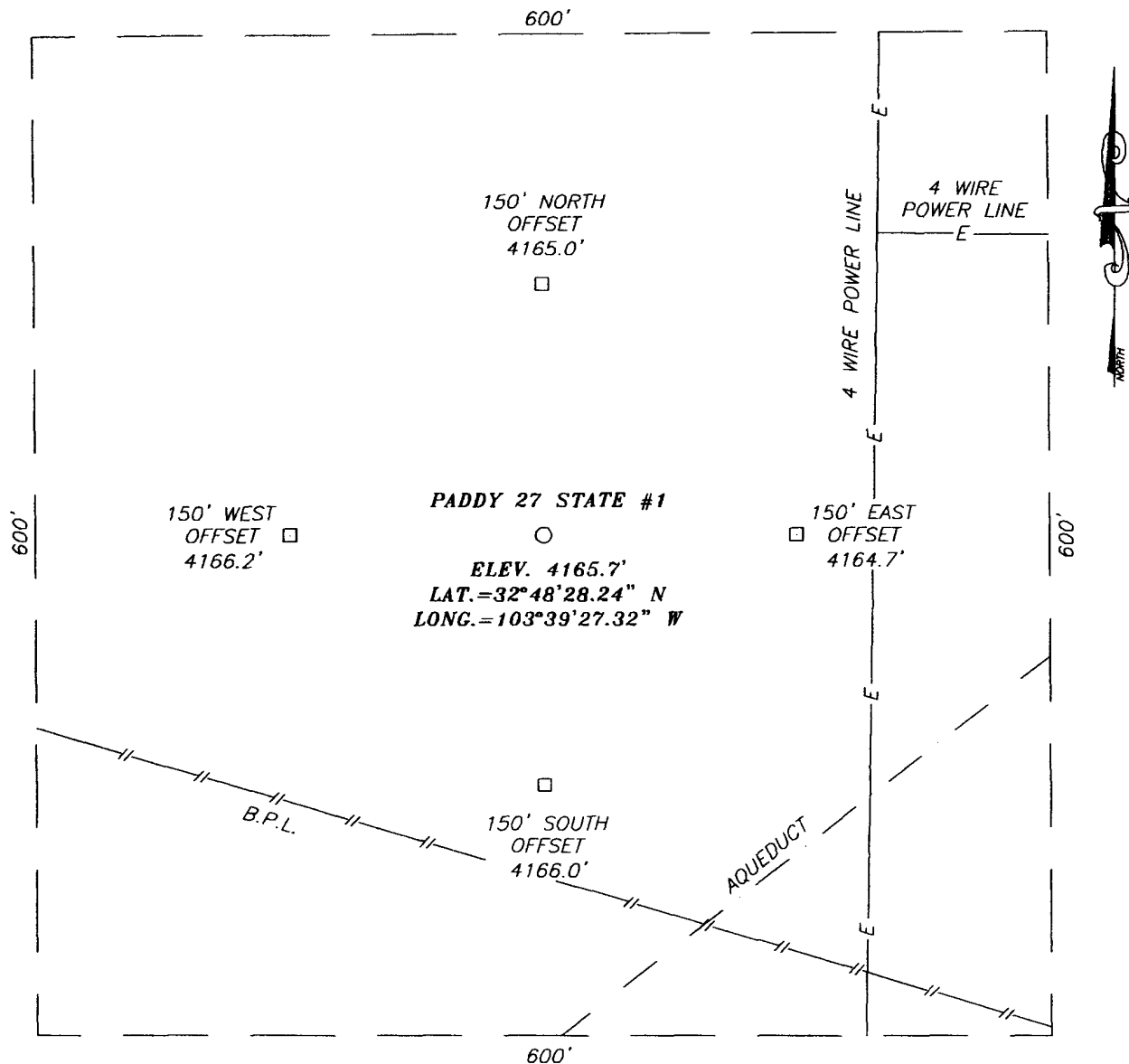
## Bottom Hole Location If Different From Surface

| UL or lot No.                | Section         | Township           | Range     | Lot Idn | Feet from the | North/South line | Feet from the | East/West line | County |
|------------------------------|-----------------|--------------------|-----------|---------|---------------|------------------|---------------|----------------|--------|
|                              |                 |                    |           |         |               |                  |               |                |        |
| Dedicated Acres<br><b>40</b> | Joint or Infill | Consolidation Code | Order No. |         |               |                  |               |                |        |

NO ALLOWABLE WILL BE ASSIGNED TO THIS COMPLETION UNTIL ALL INTERESTS HAVE BEEN CONSOLIDATED  
OR A NON-STANDARD UNIT HAS BEEN APPROVED BY THE DIVISION

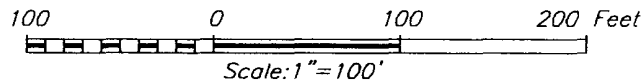
|  |  |  |   |
|--|--|--|---|
|  | <p>GEODETIC COORDINATES<br/>NAD 27 NME</p> <p>Y=658268.2 N<br/>X=707621.4 E</p> <p>LAT.=32°48'28.24" N<br/>LONG.=103°39'27.32" W</p>   |  | <p><b>OPERATOR CERTIFICATION</b></p> <p>I hereby certify the the information contained herein is true and complete to the best of my knowledge and belief.</p> <p></p> <p>Signature</p> <p>Nolan von Roeder</p> <p>Printed Name</p> <p>Engineer</p> <p>Title</p> <p>August 26, 2005</p> <p>Date</p> |
|  | <p><b>SURVEYOR CERTIFICATION</b></p> <p>I hereby certify that the well location shown on this plat was plotted from field notes of actual surveys made by me or under my supervision, and that the same is true and correct to the best of my belief.</p> <p>JUNE 15, 2005</p> |  | <p>Date Surveyed</p> <p>Signature &amp; Seal of Professional Surveyor</p> <p></p> <p>Certificate No. GARY EDSON 12641</p>   |
|  |  |  |   |
|  |  |  |   |

**SECTION 27, TOWNSHIP 17 SOUTH, RANGE 33 EAST, N.M.P.M.,**  
 LEA COUNTY, NEW MEXICO



**DIRECTIONS TO LOCATION**

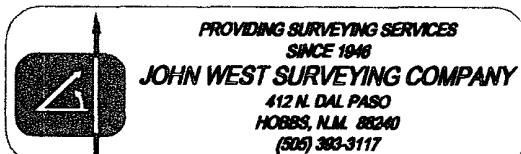
FROM THE INTERSECTION OF HWY. #529 AND CO. RD. L-125 (DOG LAKE). GO NORTH ON L-125 APPROX. 0.7 MILES. TURN RIGHT (EAST) AND GO APPROX. 1.4 MILES TO TRAIL ROAD AT AQUEDUCT. TURN LEFT (NE) AND GO APPROX. 0.2 MILES. THIS LOCATION IS APPROX. 200' NW OF ROAD.



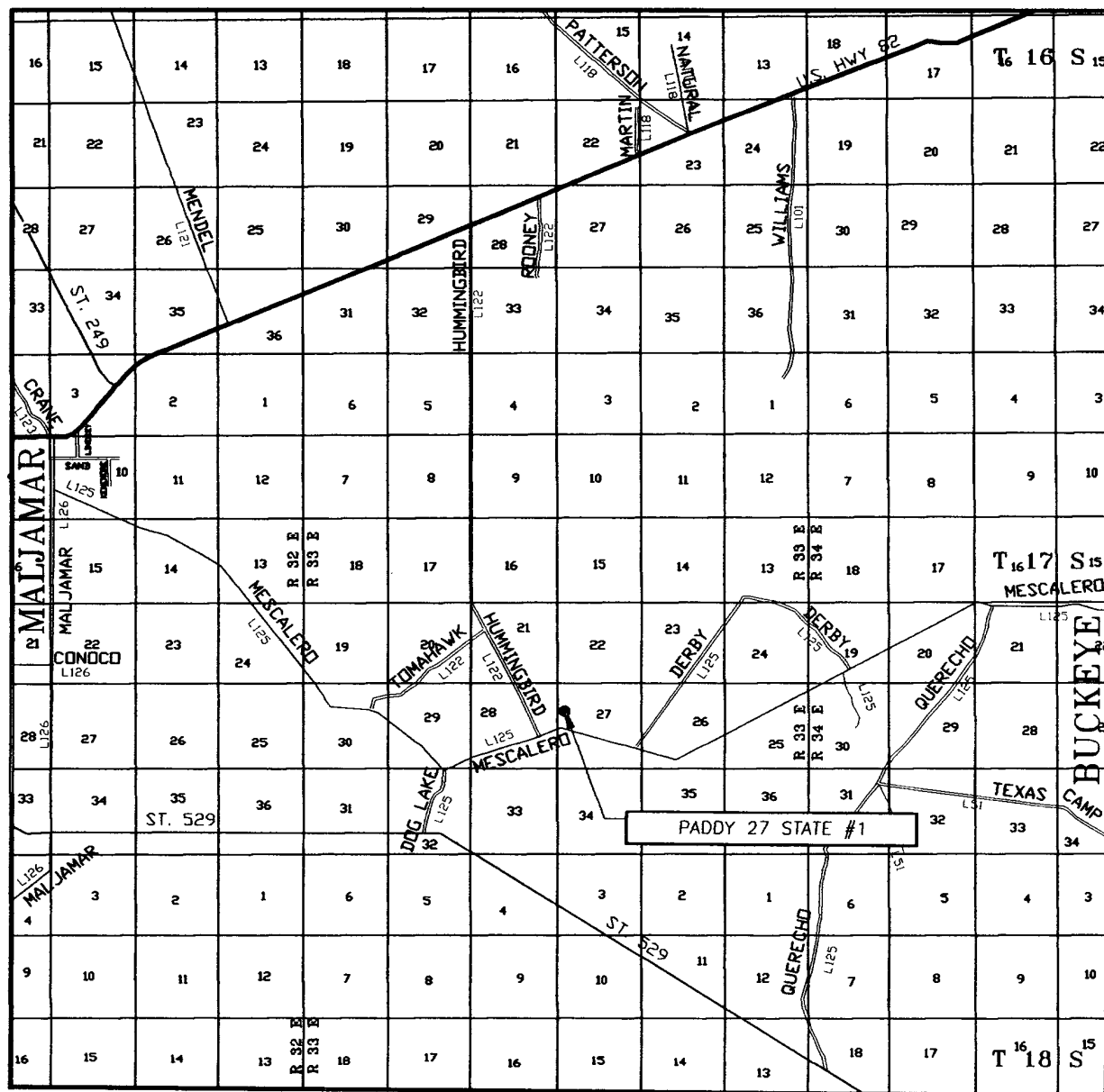
**PATTERSON PETROLEUM, LP**

PADDY 27 STATE #1 WELL  
 LOCATED 1800 FEET FROM THE NORTH LINE  
 AND 443 FEET FROM THE WEST LINE OF SECTION 27,  
 TOWNSHIP 17 SOUTH, RANGE 33 EAST, N.M.P.M.,  
 LEA COUNTY, NEW MEXICO.

|                         |                     |
|-------------------------|---------------------|
| Survey Date: 06/15/05   | Sheet 1 of 1 Sheets |
| W.O. Number: 05.11.0909 | Dr By: DEL          |
| Date: 06/20/05          | Rev 1: N/A          |
| Disk: CD#4              | 05110909            |
| Scale: 1"=100'          |                     |



# VICINITY MAP



SCALE: 1" = 2 MILES

SEC. 27 TWP. 17-S RGE. 33-E

SURVEY N.M.P.M.

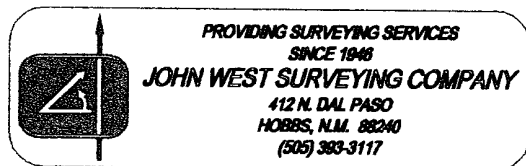
COUNTY LEA

DESCRIPTION 1800' FNL & 443' FWL

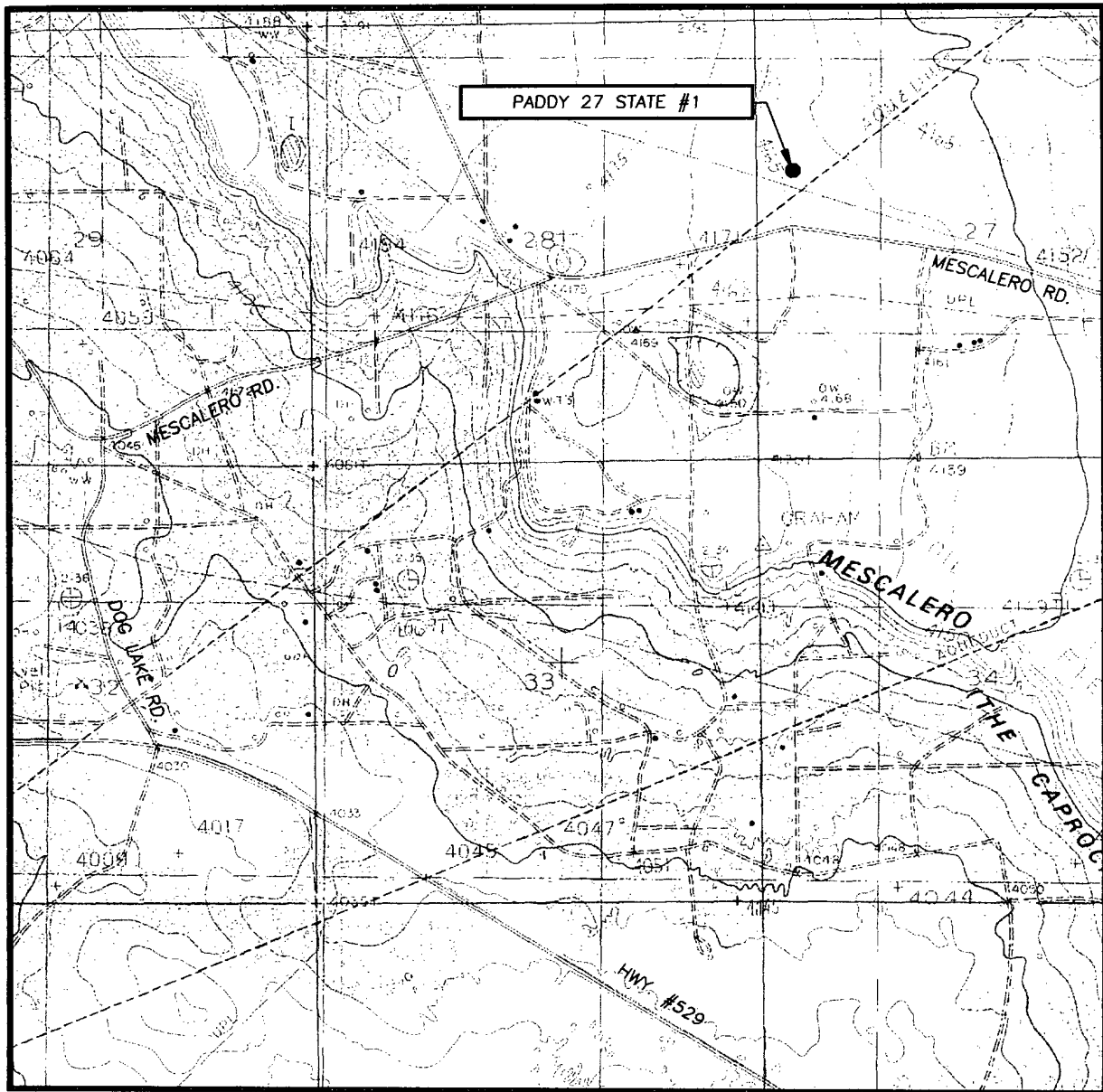
ELEVATION 4166'

OPERATOR PATTERSON PETROLEUM, LP

LEASE PADDY 27 STATE



# LOCATION VERIFICATION MAP



SCALE: 1" = 2000'

CONTOUR INTERVAL:  
DOG LAKE, N.M. - 10'  
SUPPLEMENTAL - 5'

SEC. 27 TWP. 17-S RGE. 33-E

SURVEY N.M.P.M.

COUNTY LEA

DESCRIPTION 1800' FNL & 443' FWL

ELEVATION 4166'

OPERATOR PATTERSON  
PETROLEUM, LP

LEASE PADDY 27 STATE

U.S.G.S. TOPOGRAPHIC MAP  
DOG LAKE, N.M.

