

District I  
1625 N. French Dr., Hobbs, NM 88240  
District II  
1301 W. Grand Avenue, Artesia, NM 88210  
District III  
1000 Rio Brazos Road, Aztec, NM 87410  
District IV  
1220 S. St. Francis Dr., Santa Fe, NM 87505

State of New Mexico  
Energy Minerals and Natural Resources

Form C-101  
May 27, 2004

Oil Conservation Division  
1220 South St. Francis Dr.  
Santa Fe, NM 87505

Submit to appropriate District Office

☐ AMENDED REPORT

APPLICATION FOR PERMIT TO DRILL, RE-ENTER, DEEPEN, PLUGBACK, OR ADD A ZONE

<sup>1</sup> Operator Name and Address POGO PRODUCING COMPANY P.O. BOX 10340 MIDLAND, TEXAS 79792-7340		<sup>2</sup> OGRID Number 17891
<sup>3</sup> API Number 30 - 025-37442		
<sup>4</sup> Property Code 35068	<sup>5</sup> Property Name EUREKA "21" STATE	<sup>6</sup> Well No. 2 ✓
<sup>7</sup> Proposed Pool 1 WILDCAT-MORROW ✓		<sup>8</sup> Proposed Pool 2

<sup>7</sup> Surface Location

UL or lot no.	Section	Township	Range	Lot Idn	Feet from the	North/South line	Feet from the	East/West line	County
I	21	18S	35E		1980'	SOUTH	660'	EAST	LEA

<sup>8</sup> Proposed Bottom Hole Location If Different From Surface

UL or lot no.	Section	Township	Range	Lot Idn	Feet from the	North/South line	Feet from the	East/West line	County

Additional Well Information

<sup>11</sup> Work Type Code N	<sup>12</sup> Well Type Code G	<sup>13</sup> Cable/Rotary ROTARY	<sup>14</sup> Lease Type Code S ✓	<sup>15</sup> Ground Level Elevation 3908'
<sup>16</sup> Multiple NO	<sup>17</sup> Proposed Depth 15,000'	<sup>18</sup> Formation MORROW	<sup>19</sup> Contractor UNKNOWN	<sup>20</sup> Spud Date WHEN APPROVED
Depth to Groundwater 60'		Distance from nearest fresh water well 1200'		Distance from nearest surface water Small Playa 800' East NorthE.
Pit: Liner: Synthetic <input checked="" type="checkbox"/> 12 mils thick Clay <input type="checkbox"/> Pit Volume: 18M bbls Drilling Method: Closed-Loop System <input type="checkbox"/> Fresh Water <input checked="" type="checkbox"/> Brine <input checked="" type="checkbox"/> Diesel/Oil-based <input type="checkbox"/> Gas/Air <input type="checkbox"/>				

<sup>21</sup> Proposed Casing and Cement Program

Hole Size	Casing Size	Casing weight/foot	Setting Depth	Sacks of Cement	Estimated TOC
26"	20"	Conductor	40'	Redi-mix	Surface
17½"	13 3/8"	54.5	1750'	2000 Sx.	Surface
12½"	9 5/8"	40	4800'	1500 Sx.	Surface
8½"	7"	29	11,900'	1500 Sx.	3000' FS
6 1/8"	4½"	15.1	15,000' Liner	375 Sx.	Top of liner

<sup>22</sup> Describe the proposed program. If this application is to DEEPEN or PLUG BACK, give the data on the present productive zone and proposed new productive zone. Describe the blowout prevention program, if any. Use additional sheets if necessary.

SEE ATTACHED SHEET



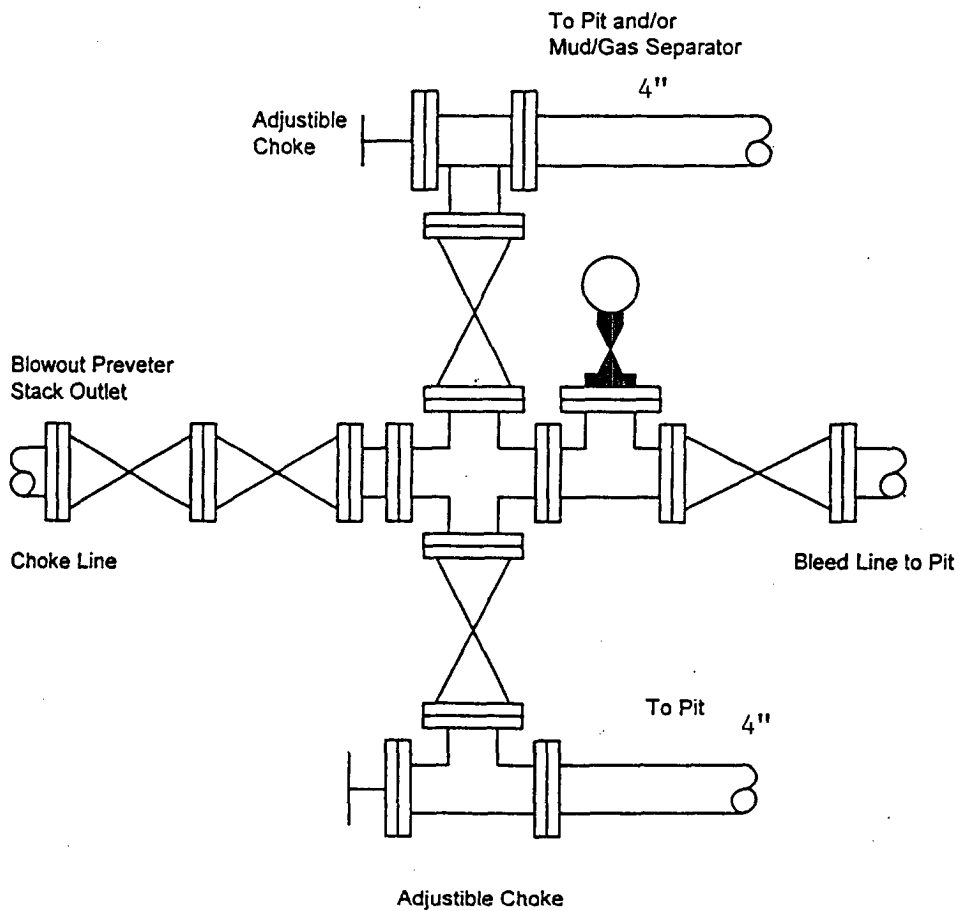
<sup>23</sup> I hereby certify that the information given above is true and complete to the best of my knowledge and belief. I further certify that the drilling pit will be constructed according to NMOCD guidelines <input checked="" type="checkbox"/> a general permit <input type="checkbox"/> or an (attached) alternative OCD-approved plan <input type="checkbox"/> .		OIL CONSERVATION DIVISION	
Printed name: Joe T. Janica		Approved by:	
Title: Agent		Title: PETROLEUM ENGINEER	
E-mail Address:		Approval Date: SEP 07 2005	
Date: 09/06/05		Expiration Date:	
Phone: 505-391-8503		Conditions of Approval Attached <input type="checkbox"/>	

1. Drill 26" hole to 40'. Set 40' of 20" conductor pipe and cement to surface with Redi-mix.
2. Drill 17½" hole to 1750'. Run and set 1750' of 13 3/8" 54.5# J-55 ST&C casing. Cement with 2000 Sx. of Class "C" cement + additives, circulate cement to surface.
3. Drill 12½" hole to 4800'. Run and set 4800' of 9 5/8" 40# N-80 ST&C casing. Cement with 1500 Sx. of Class "C" cement + additives, circulate cement to surface.
4. Drill 8½" hole to 11,900'. Run and set 11,900' of 7" 29# P-110 LT&C casing. Cement in 3 stages, DV Tools at 10,000 and 6500'. Cement 1st stage with 300 Sx. of Class "H" Premium Plus cement + additives, Cement 2nd stage with 550 Sx. of Class "H" Premium Plus cement + additives, Cement 3rd stage with 550 Sx. of Class "H" cement + additives, estimate top of cement 3000' from surface.
5. Drill 6 1/8" hole to 15,000'. Run and set a 4½" 15.1# P-110 LT&C liner from 15,000' back to 11,750'. (3250'). Cement with 375 Sx. of Class "H" Premium Plus cement + additives, cement to top of liner hanger.
6. All cement volumes will be calculated from caliper logs or other type logs.

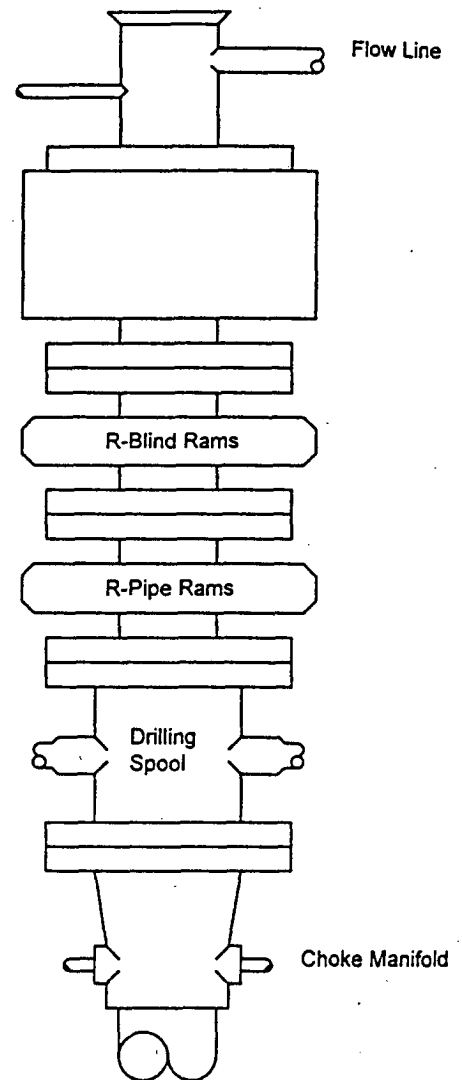
# BLOWOUT PREVENTER SYSTEM

5000 PSI

## Choke Manifold Assembly for 5M WP System



Fill Line



TYPE 1500 SERIES  
5000 psi WP

DISTRICT I  
1625 N. French Dr., Hobbs, NM 88240  
DISTRICT II  
811 South First, Artesia, NM 88210

State of New Mexico  
Energy, Minerals and Natural Resources Department

Form C-102  
Revised March 17, 1999

Submit to Appropriate District Office  
State Lease - 4 Copies  
Fee Lease - 3 Copies

DISTRICT III  
1000 Rio Brazos Rd., Aztec, NM 87410  
DISTRICT IV  
2040 South Pacheco, Santa Fe, NM 87505

OIL CONSERVATION DIVISION

2040 South Pacheco  
Santa Fe, New Mexico 87504-2088

☐ AMENDED REPORT

WELL LOCATION AND ACREAGE DEDICATION PLAT

API Number 30-025-37442	Pool Code	Pool Name WILDCAT-MORROW
Property Code 35068	Property Name EUREKA "21" STATE	Well Number 2
OGRID No. 17891	Operator Name POGO PRODUCING COMPANY	Elevation 3908'

Surface Location

UL or lot No. 1	Section 21	Township 18 S	Range 35 E	Lot Idn	Feet from the 1980	North/South line SOUTH	Feet from the 660	East/West line EAST	County LEA
--------------------	---------------	------------------	---------------	---------	-----------------------	---------------------------	----------------------	------------------------	---------------

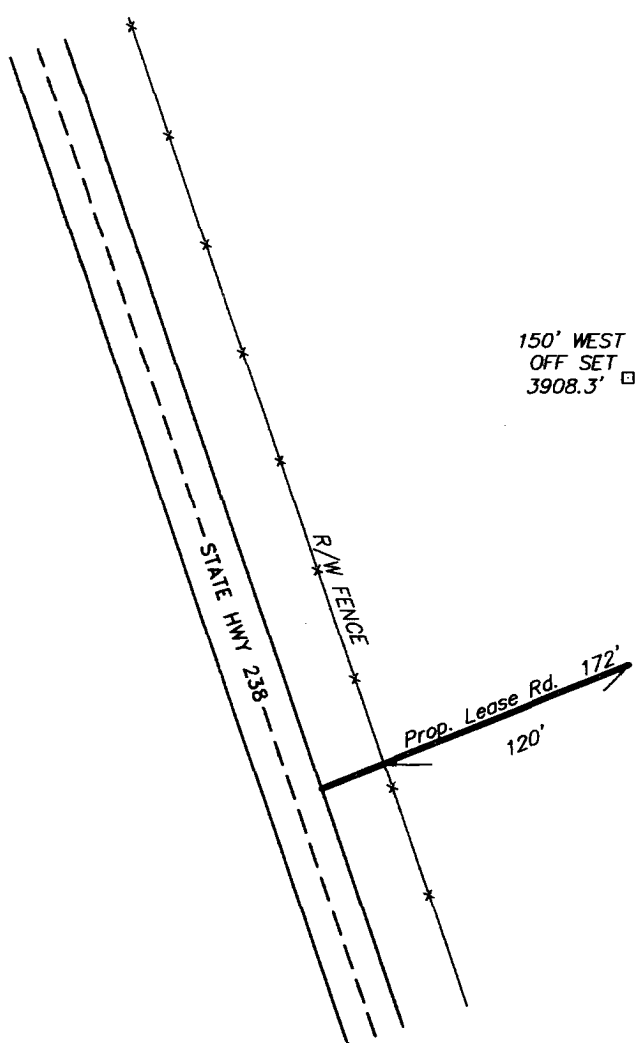
Bottom Hole Location If Different From Surface

UL or lot No.	Section	Township	Range	Lot Idn	Feet from the	North/South line	Feet from the	East/West line	County
Dedicated Acres 320	Joint or Infill	Consolidation Code	Order No.						

NO ALLOWABLE WILL BE ASSIGNED TO THIS COMPLETION UNTIL ALL INTERESTS HAVE BEEN CONSOLIDATED  
OR A NON-STANDARD UNIT HAS BEEN APPROVED BY THE DIVISION

				<b>OPERATOR CERTIFICATION</b>	
				<p>I hereby certify the the information contained herein is true and complete to the best of my knowledge and belief.</p> <p><i>Joe T. Janica</i> Signature Joe T. Janica Printed Name Agent Title 09/06/05 Date</p>	
				<b>SURVEYOR CERTIFICATION</b>	
				<p>I hereby certify that the well location shown on this plat was plotted from field notes of actual surveys made by me or under my supervision, and that the same is true and correct to the best of my belief.</p> <p>AUGUST 11, 2005 Date Surveyed Signature &amp; Seal of Professional Surveyor 7977 W.O. No. 8699 Certificate No. Gary L. Jones 7977 BASIN SURVEYS</p>	
<p>Lat.: N32°43'52.8" Long.: W103°27'21.6"</p> <p>660'</p> <p>1980'</p>					

SECTION 21, TOWNSHIP 18 SOUTH, RANGE 35 EAST, N.M.P.M.,  
LEA COUNTY, NEW MEXICO.



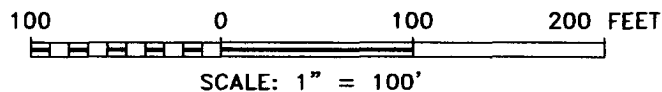
150' NORTH  
OFF SET  
3907.9'  
□

POGO PRODUCING COMPANY  
EUREKA "21" STATE #2  
ELEV. - 3908'  
○  
Lat. -N 32°43'52.8"  
Long -W 103°27'21.6"

150' EAST  
OFF SET  
3906.7'  
□



□  
150' SOUTH  
OFF SET  
3907.7'



Directions to Location:

FROM MILE MARKER 3 ON STATE HWY 238, GO  
NORTH 300 FEET TO PROPOSED LOCATION.

**BASIN SURVEYS** P.O. BOX 1786-HOBBS, NEW MEXICO

W.O. Number: 5699

Drawn By: K. GOAD

Date: 08-16-2005

Disk: KJG CD#1 - 5699A.DWG

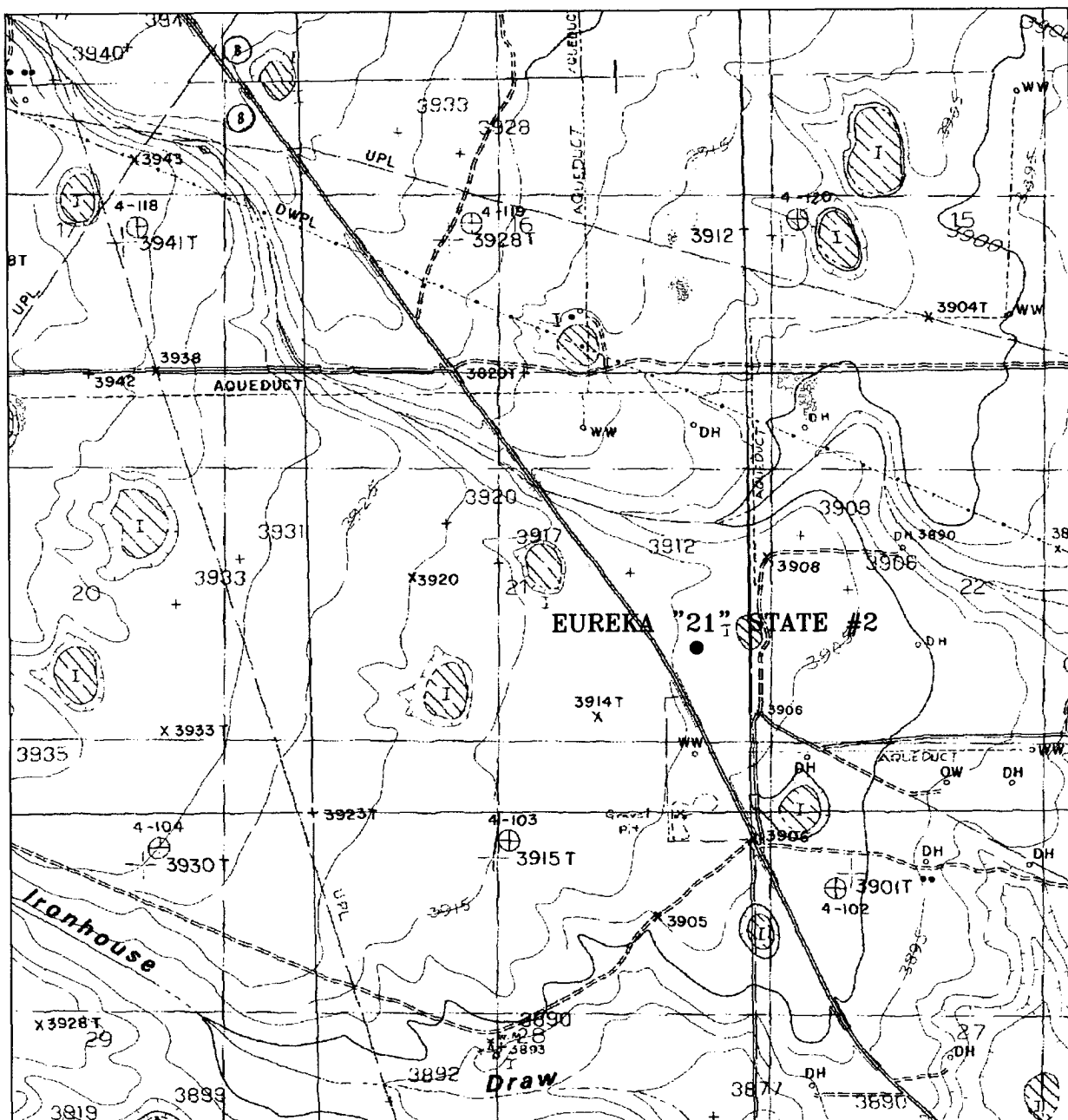
**POGO PRODUCING CO.**

REF: EUREKA "21" STATE #2 / Well Pad Topo

THE EUREKA "21" STATE No. 2 LOCATED 1980' FROM  
THE SOUTH LINE AND 660' FROM THE EAST LINE OF  
SECTION 21, TOWNSHIP 18 SOUTH, RANGE 35 EAST,  
N.M.P.M., LEA COUNTY, NEW MEXICO.

Survey Date: 08-11-2005

Sheet 1 of 1 Sheets



## EUREKA "21" STATE #2

Located at 1980' FSL and 660' FEL  
 Section 21, Township 18 South, Range 35 East,  
 N.M.P.M., Lea County, New Mexico.

**basin**  
**surveys**  
 focused on excellence  
 in the oilfield

P.O. Box 1786  
 1120 N. West County Rd.  
 Hobbs, New Mexico 88241  
 (505) 393-7316 - Office  
 (505) 392-3074 - Fax  
 basinsurveys.com

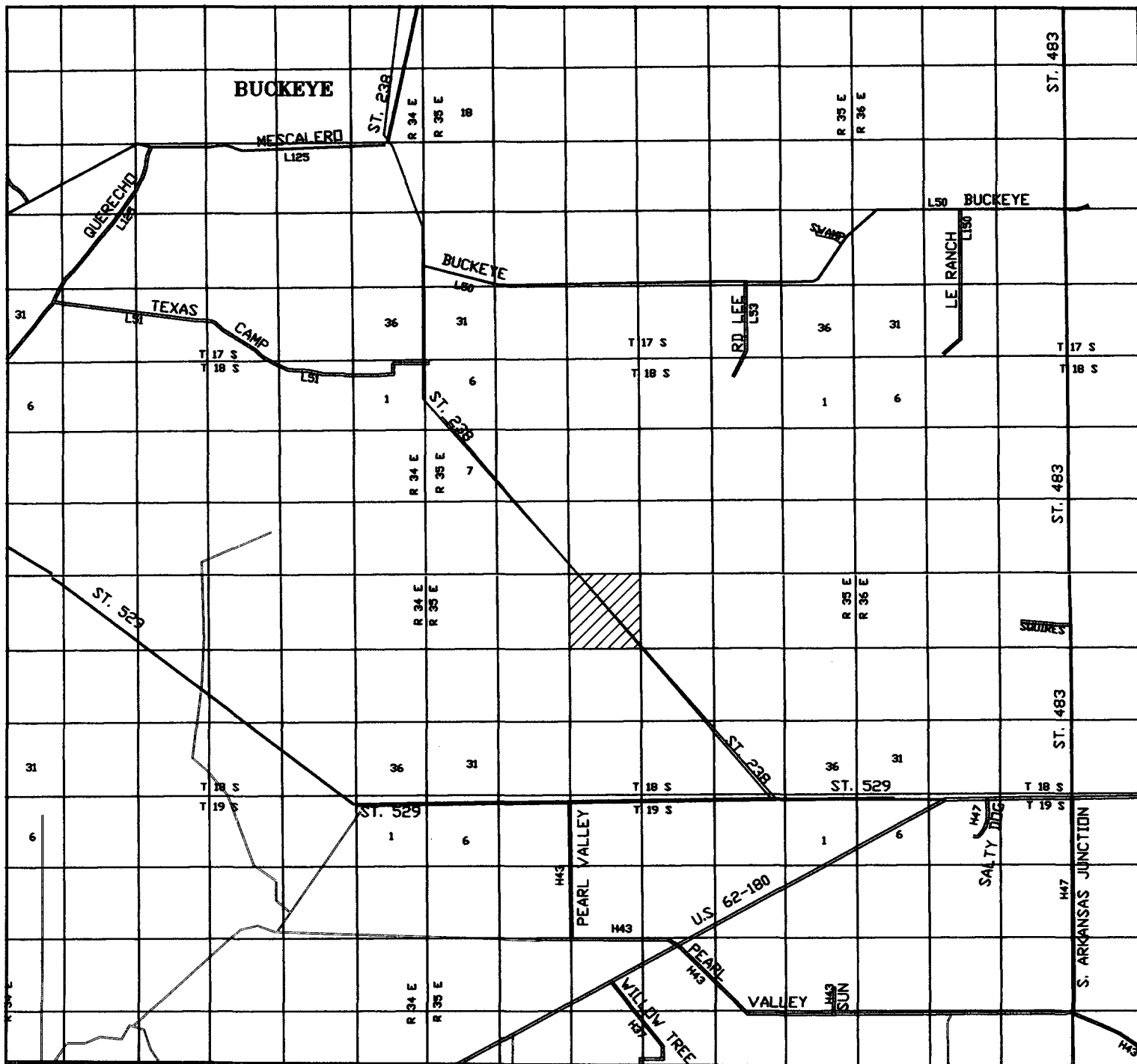
W.O. Number: 5699AA - KJG CD#1

Survey Date: 08-11-2005

Scale: 1" = 2000'

Date: 08-16-2005

**POGO**  
**PRODUCING**  
**COMPANY**



## EUREKA "21" STATE #2

Located at 1980' FSL and 660' FEL  
 Section 21, Township 18 South, Range 35 East,  
 N.M.P.M., Lea County, New Mexico.

**basin**  
**surveys**  
 focused on excellence  
 in the oilfield

P.O. Box 1786  
 1120 N. West County Rd.  
 Hobbs, New Mexico 88241  
 (505) 393-7316 - Office  
 (505) 392-3074 - Fax  
 basinsurveys.com

W.O. Number: 5699AA - KJG CD#1

Survey Date: 08-11-2005

Scale: 1" = 2 MILES

Date: 08-16-2005

**POGO**  
**PRODUCING**  
**COMPANY**