

UNITED STATES
DEPARTMENT OF THE INTERIOR
BUREAU OF LAND MANAGEMENT
N.M. Oil Cons. Division
1625 N. French Dr.
Hobbs, NM 88240

FORM APPROVED
Budget Bureau No. 1004-0135
Expires: March 31, 1993

SUNDRY NOTICES AND REPORTS ON WELLS

Do not use this form for proposals to drill or to deepen or reentry to a different reservoir.

Use "APPLICATION FOR PERMIT --" for such proposals

SUBMIT IN TRIPLICATE

1. Type of Well: ☒ OIL WELL ☐ GAS WELL ☐ OTHER

2. Name of Operator
CHEVRON USA INC

3. Address and Telephone No. 15 SMITH ROAD, MIDLAND, TX 79705 915-687-737

4. Location of Well (Footage, Sec., T., R., M., or Survey Description)
Unit Letter J : 2310 Feet From The SOUTH Line and 2310 Feet From The
EAST Line Section 26 Township 24S Range 37E

5. Lease Designation and Serial No.
NM-14218

6. If Indian, Allottee or Tribe Name

7. If Unit or CA, Agreement Designation

8. Well Name and Number
FRISTOE, C. C. -B- FED. NCT-2
12

9. API Well No.
30 025 22032

10. Field and Pool, Exploratory Area
LANGLIE MATTIX 7 RVR QN GRAYBURG

11. County or Parish, State
LEA, NEW MEXICO

12. Check Appropriate Box(s) To Indicate Nature of Notice, Report, or Other Data

TYPE OF SUBMISSION

- ☒ Notice of Intent
☐ Subsequent Report
☐ Final Abandonment Notice

TYPE OF ACTION

- ☐ Abandonment
☒ Recompletion
☐ Plugging Back
☐ Casing Repair
☐ Altering Casing
☒ OTHER: PB TO GRAYBURG
☐ Change of Plans
☐ New Construction
☐ Non-Routine Fracturing
☐ Water Shut-Off
☐ Conversion to Injection
☐ Dispose Water

(Note: Report results of multiple completion on Well Completion or Recompletion Report and Log Form.)

13. Describe Proposed or Completed Operations (Clearly state all pertinent details, and give pertinent dates, including estimated date of starting any proposed work. If well is directionally drilled, give subsurface locations and measured and true vertical depths for all markers and zones pertinent to this work.)

CHEVRON U.S.A. INC. INTENDS TO RECOMPLETE THE SUBJECT WELL FROM THE JUSTIS BLINEBRY FORMATION TO THE LANGLIE MATTIX SEVEN RIVER QUEEN GRAYBURG FORMATION.

THE INTENDED PROCEDURE AND WELLBORE DIAGRAM IS ATTACHED FOR YOUR APPROVAL.



14. I hereby certify that the foregoing is true and correct

SIGNATURE Denise Leake TITLE Regulatory Specialist DATE 5/13/2003

TYPE OR PRINT NAME APPROVED Denise Leake

(This space for Federal or State office use)

APPROVED (ORIG. SGD.) DAVID R. GLASS

CONDITIONS OF APPROVAL IF ANY MAY 21 2003 TITLE

DATE

Title 18 U.S.C. Section 1001, makes it a crime for any person knowingly and willfully to make to any department or agency of the United States any false, fictitious or fraudulent statements or representations as to any matter within its jurisdiction.

DAVID R. GLASS
PETROLEUM ENGINEER

W3W

**C. C. Fristoe B Fed NCT-2 No. 12
Grayburg Completion Procedure
Lea County, New Mexico**

API NO: 30-025-22032

Well: C. C. Fristoe B Fed NCT-2 No. 12

WBS Number: UWPNM- \$

Well Location:

Section: 26 **Township:** 24S **Range:** 37E

Surface Location: 2310' FSL & 2310' FEL

Lea County, New Mexico

Current Status:

Status: Pumping

Production: 1 BOPD, 4 BWPD, 4 MCFD

Formation: Tubb-Drinkard

Objectives

1. Abandon Blinebry formation.
2. Perforate Grayburg and break down with acid.
3. Swab test the Grayburg to determine fluid entry rate.
4. Fracture stimulate the Grayburg.
5. Run production equipment and turn well over to operations.

Procedure

NOTE: Use 2% KCL water for all operations.

1. MIRU PU. NDWH. NU BOP and EPA. Pressure test BOP to 1,500 psi.
2. POH with rods, pump and tubing. PU and RIH with 3-7/8" bit on a 2-7/8" tubing and CO to 5100'. POH.
3. RIH with 4-1/2" CIBP and set @ 5100'. Dump 30' cmt on top of CIBP. Circulate hole clean using 2% KCL water. POOH with tubing.
4. MIRU Baker Atlas. Install lubricator and test to 2000 PSI. Run GR-CBL from 3700 to 1700 and tie into Schlumberger Acoustilog dated 3/13/67. Hold 2000 PSI on the annulus during logging run. Fax copy to Midland Office at 915-687-7557 for evaluation.
5. Perforate the following intervals using Baker's 3-1/8" Slick Guns loaded with 4 SPF, using 23 gram premium charges, at 120° phasing:

C. C. Fristoe B Fed NCT-2 No. 12
Grayburg Completion Procedure
Lea County, New Mexico

API NO: 30-025-22032

3,474' – 3,480'
3,497' – 3,505'
3,524' – 3,531'
3,545' – 3,553'

6. PU and RIH with 4-1/2" PPI packer (with a 20' element spacing) and SCV on 2-7/8" tubing to approximately 3540'.
7. MI & RU DS Services. Acidize perms 3474-3553' with 1,500 gals anti-sludge 15% HCL acid at a maximum rate as shown below and a maximum surface pressure of 2,000 PSI. Spot acid to bottom of tubing at beginning of each stage. Pump job as follows:

Interval	Amt. Acid	Max Rate	PPI Setting
3545-3553	400 gals	½ BPM	3540-3560
3524-3531	400 gals	½ BPM	3517-3537
3497-3505	400 gals	½ BPM	3490-3510
3474-3480	300 gals	½ BPM	3466-3486

Displace acid with 2% KCl water -- do not overdisplace. Use a SCV to control displacement fluid. Record ISIP, 5 & 10 minute SIP's. RD and release DS services. **Note: If communication occurs during treatment of any interval, move to the next setting and combine treatment volumes.**

8. Release PPI packer and PUH to approximately 3400'. Swab back all intervals together. Recover 100% of treatment and load volumes before shutting well in for night, if possible. Report recovered fluid volumes, pressures, and/or swabbing fluid levels. **Note: Selectively swab perms as directed by Engineering if excessive water is produced.**
9. Open well. Release PPI packer. POH with tbg and PPI packer.
10. PU and GIH w/ 4-1/2" treating packer and On-Off tool w/2.25" F profile and 2-7/8" EUE 8R L-80 work string, testing to 7,500 psi. Set pkr at 3,400'. Install frac head. Pressure annulus to 500 psi to test csg and pkr. Leave pressure on csg during frac job to observe for communication.
11. MI & RU DS Services. Frac well down 2-7/8" tubing at 35 BPM with 43,000 gals of YF135ST, 73,000 lbs of 16/30 Jordan Sand and 24,000 lbs 16/30 resin-coated sand. Observe a maximum surface treating pressure of 7,400 psi. Pump job as per the attached FracCADE design.
12. Leave well SI over night.
13. Open well. Release pkr and POH with 2-7/8" work string.

C. C. Fristoe B Fed NCT-2 No. 12
Grayburg Completion Procedure
Lea County, New Mexico

API NO: 30-025-22032

14. PU 3-7/8" bit and GIH with 2-7/8" work string to top of sand fill. Establish circulation using 2% KCL water. CO well bore to 3750'. POH w/ bit and tubing.
15. Run production equipment as per ALS recommendation.
16. Turn well over to production. Report producing rates, choke sizes, flowing pressures and/or fluid levels.

Mark S. Wakefield

May 7, 2003

CURRENT
WELLBORE DIAGRAM

Lease: C. C. Fristoe B (NCT-2) Well No.: 12 Field: Justis Formation: Blinebry
Location: 2310' FSL, 2310' FEL Section: 26 Tsp: 24S Range: 37E
County: Lea State: New Mexico Lot: J API: 30-025-22032 Refno: FG0188
Cost Center: UCU802900

Surface Csg.

Size: 8-5/8"
Wt.: 17.28#
Set @: 973'
Sx cmt: 550
Hole Size: 11"
TOC: surface

KB: _____
DF: 3193'
GL: _____
Spud Date: 2/17/1967
Released Rig: 3/13/1967
Compl. Date: 3/22/1967

Tubing Detail (3/28/01)

Tbg landed @ 5832'
SN @ 5793'
TAC @ 5033'

← Top of Salt @ 1090'

← TOC @ 1968' by calculation

← Bottom of Salt @ 2302'

Production Csg.

Size: 4-1/2"
Wt.: 11.6#
Set @: 6140'
Sx Cmt: 900
Hole Size: 7-7/8"
TOC: 1968' by calc

PERFS

5120-5320'
5321-5802'

STATUS

Blinebry Upper - Open
Blinebry Lower - Open



CIBP set @ 5950'
w/35' cmt on top

Remarks: _____

Prepared by: K. M. Jackson
Date: 3/26/2003

DISTRICT I

P.O. Box 1980, Hobbs, NM 88241-1980

DISTRICT II

P.O. Box Drawer DD, Artesia, NM 88211-0719

DISTRICT III

1000 Rio Brazos Rd., Aztec, NM 87410

DISTRICT IV

P.O. Box 2088, Santa Fe, NM 87504-2088

State of New Mexico

Energy, Minerals and Natural Resources Department

OIL CONSERVATION DIVISION

P.O. Box 2088

Santa Fe, New Mexico 87504-2088

Form C-102

Revised February 10, 1999

Instructions on back

Submit to Appropriate District Office

State Lease - 4 Copies

Fee Lease - 3 Copies

☐ AMENDED REPORT**WELL LOCATION AND ACREAGE DEDICATION PLAT**

¹ API Number 30 025 22032	² Pool Code 37240	³ Pool Name LANGLIE MATTIX 7 RVR QN GRAYBURG
⁴ Property Code 29917	⁵ Property Name FRISTOE, C. C. -B- FED. NCT-2	⁶ Well No. 12
⁷ OGRID Number 4323	⁸ Operator Name CHEVRON USA INC	⁹ Elevation

¹⁰ Surface Location

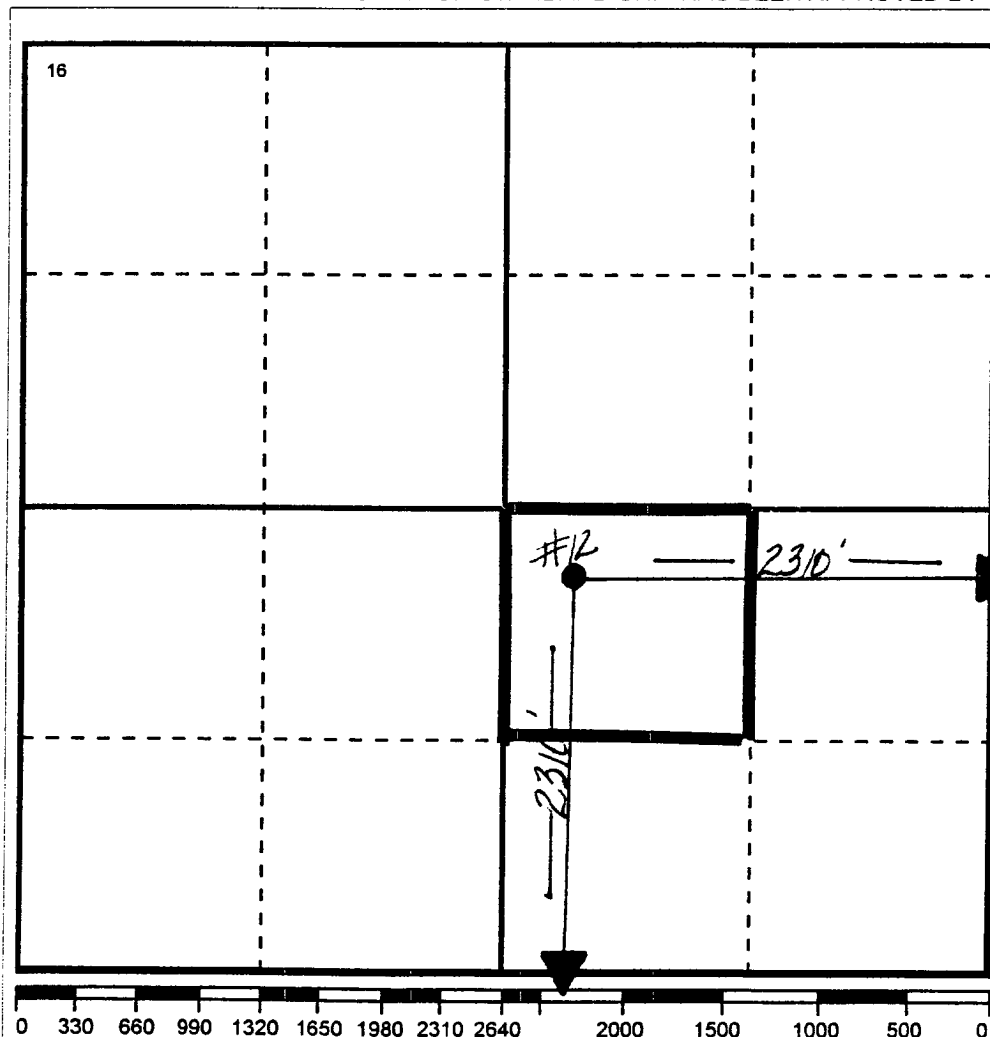
UI or lot no	Section	Township	Range	Lot.Idn	Feet From The	North/South Line	Feet From The	East/West Line	County
J	26	24S	37E		2310	SOUTH	2310	EAST	LEA

¹¹ Bottom Hole Location If Different From Surface

UI or lot no.	Section	Township	Range	Lot.Idn	Feet From The	North/South Line	Feet From The	East/West Line	County

¹² Dedicated Acre 40	¹³ Joint or Infill No	¹⁴ Consolidation Code	¹⁵ Order No.
------------------------------------	-------------------------------------	----------------------------------	-------------------------

NO ALLOWABLE WILL BE ASSIGNED TO THIS COMPLETION UNTIL ALL INTERESTS HAVE BEEN CONSOLIDATED
OR A NON-STANDARD UNIT HAS BEEN APPROVED BY THE DIVISION

**17 OPERATOR CERTIFICATION**

I hereby certify that the information contained herein is true and complete to the best of my knowledge and belief

Signature

Denise Leake

Printed Name

Denise Leake

Position

Regulatory Specialist

Date

5/13/2003

18 SURVEYOR CERTIFICATION

I hereby certify that the well location shown on this plat was plotted from field notes of actual surveys made by me or under my supervision, and that the same is true and correct to the best of my knowledge and belief.

Date Surveyed

Signature & Seal of Professional Surveyor

Certificate No.