

District I  
1625 N. French Dr., Hobbs, NM 88240  
District II  
1301 W. Grand Avenue, Artesia, NM 88210  
District III  
1000 Rio Brazos Road, Aztec, NM 87410  
District IV  
1220 S. St. Francis Dr., Santa Fe, NM 87505

State of New Mexico  
Energy Minerals and Natural Resources

Form C-101  
Revised June 10, 2003

Oil Conservation Division  
1220 South St. Francis Dr.  
Santa Fe, NM 87505

Submit to appropriate District Office  
State Lease - 6 Copies  
Fee Lease - 5 Copies

☐ AMENDED REPORT

**APPLICATION FOR PERMIT TO DRILL, RE-ENTER, DEEPEN, PLUGBACK, OR ADD A ZONE**

<sup>1</sup> Operator Name and Address ConocoPhillips Company 4001 Penbrook, Odessa, TX 79762		<sup>2</sup> OGRID Number 217817
		<sup>3</sup> API Number 30 - 025-33677
<sup>3</sup> Property Code 19955 <i>72479</i>	<sup>5</sup> Property Name Deck Estate 7	<sup>6</sup> Well No. 1

**<sup>7</sup> Surface Location**

UL or lot no.	Section	Township	Range	Lot Idn	Feet from the	North/South line	Feet from the	East/West line	County
L	7	21S	37E		1930	South	990	West	Lea

**<sup>8</sup> Proposed Bottom Hole Location If Different From Surface**

UL or lot no.	Section	Township	Range	Lot Idn	Feet from the	North/South line	Feet from the	East/West line	County

<sup>9</sup> Proposed Pool 1 <i>Eunice McKee, N</i> <del>Drinkard</del>	<sup>10</sup> Proposed Pool 2
--	-------------------------------

<sup>11</sup> Work Type Code E	<sup>12</sup> Well Type Code O	<sup>13</sup> Cable/Rotary R	<sup>14</sup> Lease Type Code P	<sup>15</sup> Ground Level Elevation 3490'
<sup>16</sup> Multiple No	<sup>17</sup> Proposed Depth 10,100'	<sup>18</sup> Formation McKee	<sup>19</sup> Contractor	<sup>20</sup> Spud Date 7/1/03

**<sup>21</sup> Proposed Casing and Cement Program**

Hole Size	Casing Size	Casing weight/foot	Setting Depth	Sacks of Cement	Estimated TOC
17 1/2"	K-55, 13 3/8"	54.5#	435'	455	Surface
12 1/4"	J-55, 8 5/8"	32#	3986'	1900	Surface
7 7/8"	L-80&K-55, 5 1/2"	17#	10,100'	835	TOC @ 3886'

22 Describe the proposed program. If this application is to DEEPEN or PLUG BACK, give the data on the present productive zone and proposed new productive zone. Describe the blowout prevention program, if any. Use additional sheets if necessary.

1. Well Location and Acreage Dedication Plat (C-102)
2. Proposed Well Plan Outline
3. Cementing Program
4. BOP/Choke Diagram

Permit Expires 1 Year From Approval  
Date Unless ~~Drilling Underway~~  
*Re-Entry*

<sup>23</sup> I hereby certify that the information given above is true and complete to the best of my knowledge and belief.		OIL CONSERVATION DIVISION	
Signature: <i>Reesa Holland</i>		Approved by: <i>[Signature]</i>	
Printed name: Reesa R. Holland		Title: PETROLEUM ENGINEER	
Title: Regulatory Analyst		Approval Date: JUN 19 2003 Expiration Date:	
E-mail Address: Reesa_R.Holland@conocophillips.com			
Date: 6/12/03	Phone: 432/368-1373	Conditions of Approval: Attached <input type="checkbox"/>	

District I  
PO Box 1980, Hobbs, NM 88241-1980  
District II  
PO Drawer DD, Artesia, NM 88211-0719  
District III  
1000 Rio Brazos Rd., Artec, NM 87410  
District IV  
PO Box 2088, Santa Fe, NM 87504-2088

State of New Mexico  
Energy, Minerals & Natural Resources Department

OIL CONSERVATION DIVISION  
PO Box 2088  
Santa Fe, NM 87504-2088

Form C-102  
Revised February 21, 1994  
Instructions on back  
Submit to Appropriate District Office  
State Lease - 4 Copies  
Fee Lease - 3 Copies

☐ AMENDED REPORT

WELL LOCATION AND ACREAGE DEDICATION PLAT

'API Number 30-025- 33677	'Pool Code 96705 NA	'Pool Name Eunice Wildcat, McKee, N.
'Property Code 19955 NA	'Property Name DECK ESTATE 7	'Well Number 1
'GRID No. 005073	'Operator Name CONOCO INC.	'Elevation 3490'

<sup>10</sup> Surface Location

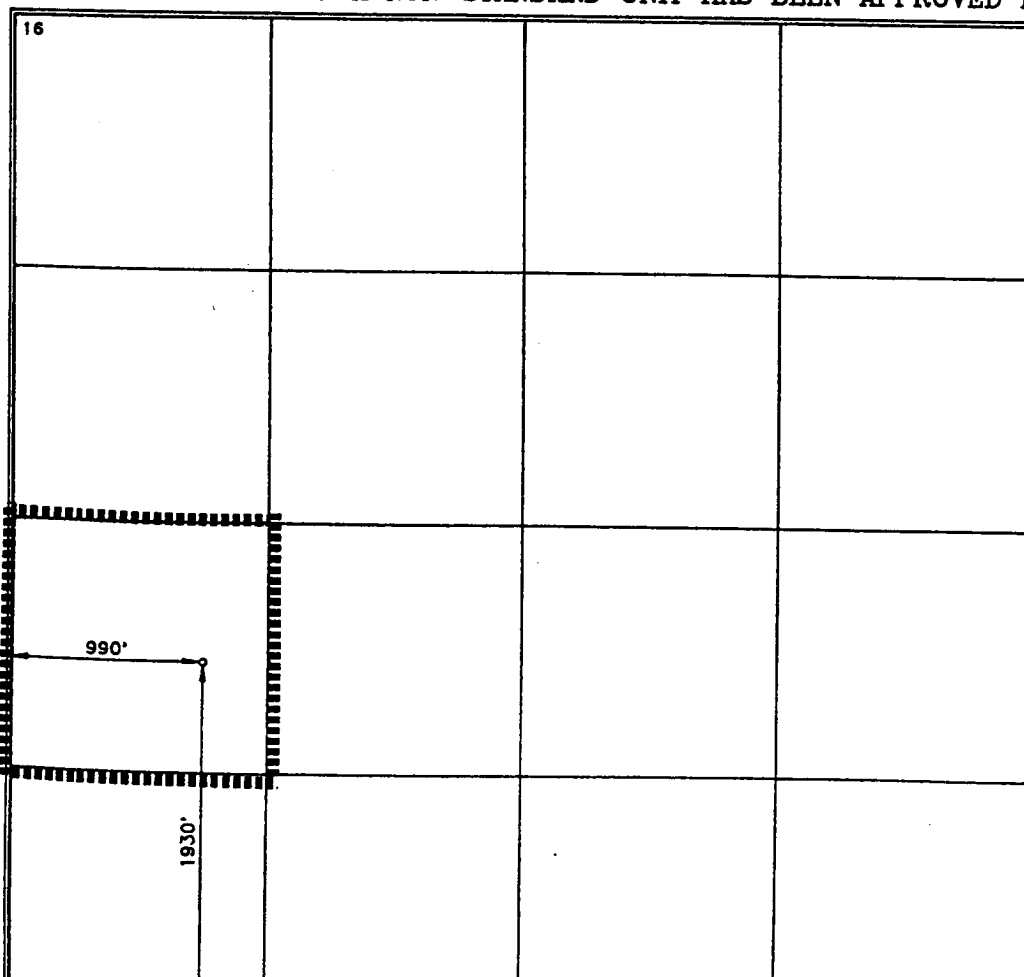
UL or lot no.	Section	Township	Range	Lot Idn	Feet from the	North/South line	Feet from the	East/West line	County
L	7	21-S	37-E		1930	SOUTH	990	WEST	LEA

<sup>11</sup> Bottom Hole Location If Different From Surface

UL or lot no.	Section	Township	Range	Lot Idn	Feet from the	North/South line	Feet from the	East/West line	County

'Dedicated Acres 40	'Joint or Infill	'Consolidation Code	'Order No.
------------------------	------------------	---------------------	------------

NO ALLOWABLE WILL BE ASSIGNED TO THIS COMPLETION UNTIL ALL INTERESTS HAVE BEEN CONSOLIDATED  
OR A NON-STANDARD UNIT HAS BEEN APPROVED BY THE DIVISION



<sup>17</sup> OPERATOR CERTIFICATION

I hereby certify that the information contained herein is true and complete to the best of my knowledge and belief.

*Jerry W. Hoover*  
Signature

JERRY W. HOOVER

Printed Name  
SR. CONSERVATION COORDINATOR

Title  
November 5, 1996

Date

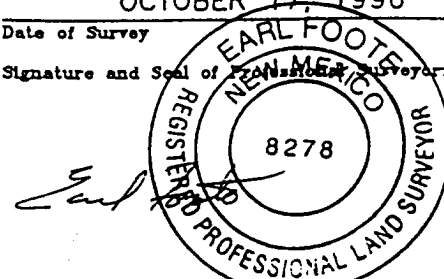
<sup>18</sup> SURVEYOR CERTIFICATION

I hereby certify that the well location shown on this plat was plotted from field notes of actual surveys made by me or under my supervision, and that the same is true and correct to best of my belief.

OCTOBER 17, 1996

Date of Survey

Signature and Seal of





**DRAFT RE-ENTRY PROCEDURE FOR**  
**DECK ESTATE "7" #1**  
**(previously P&A'd)**

**WELL:** Deck Estate "7" #1

**COUNTY, STATE:** Lea, New Mexico

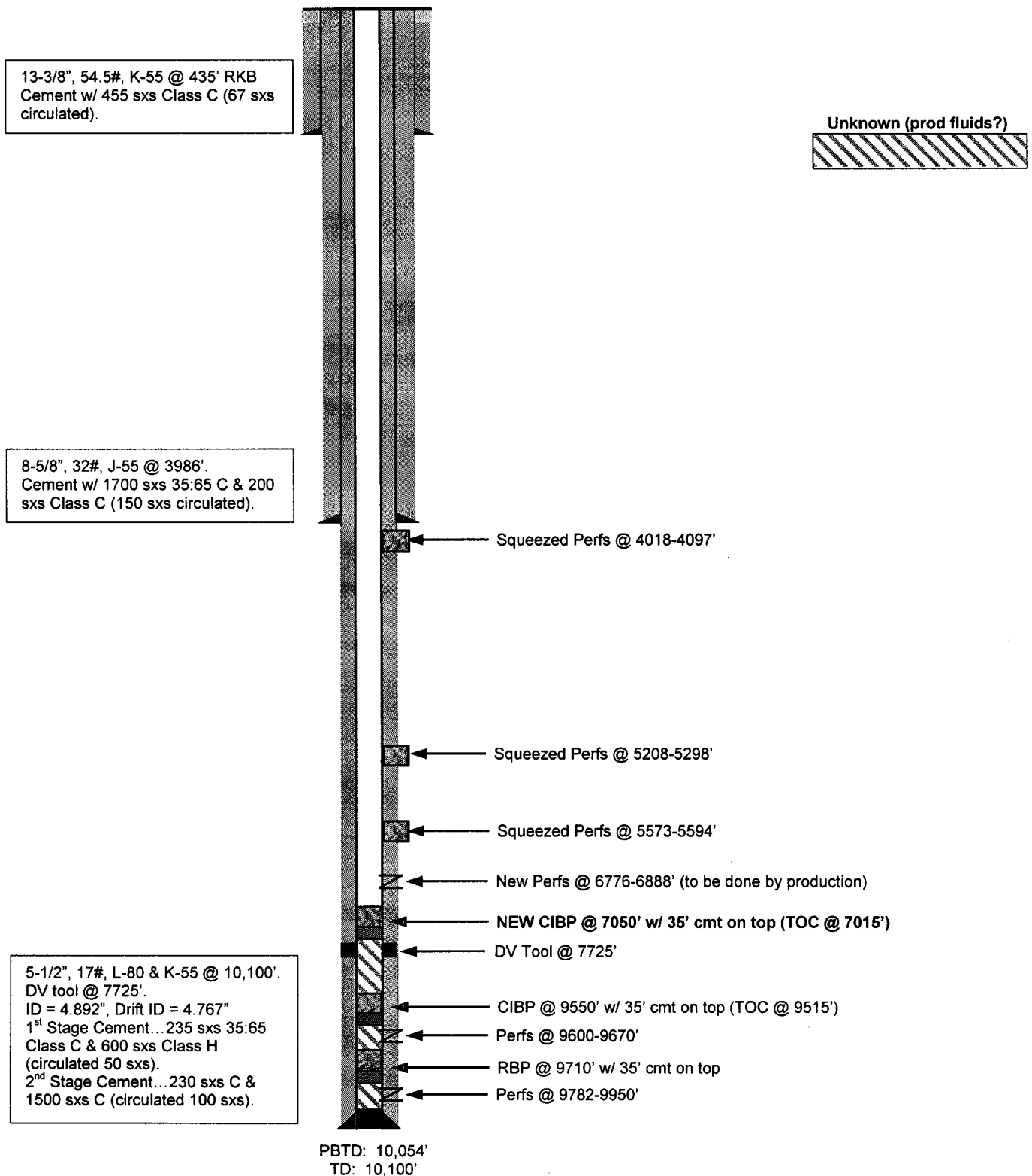
**LOCATION:** 1930' FSL & 990' FWL, Sec 7, T-21-S, R-37-E

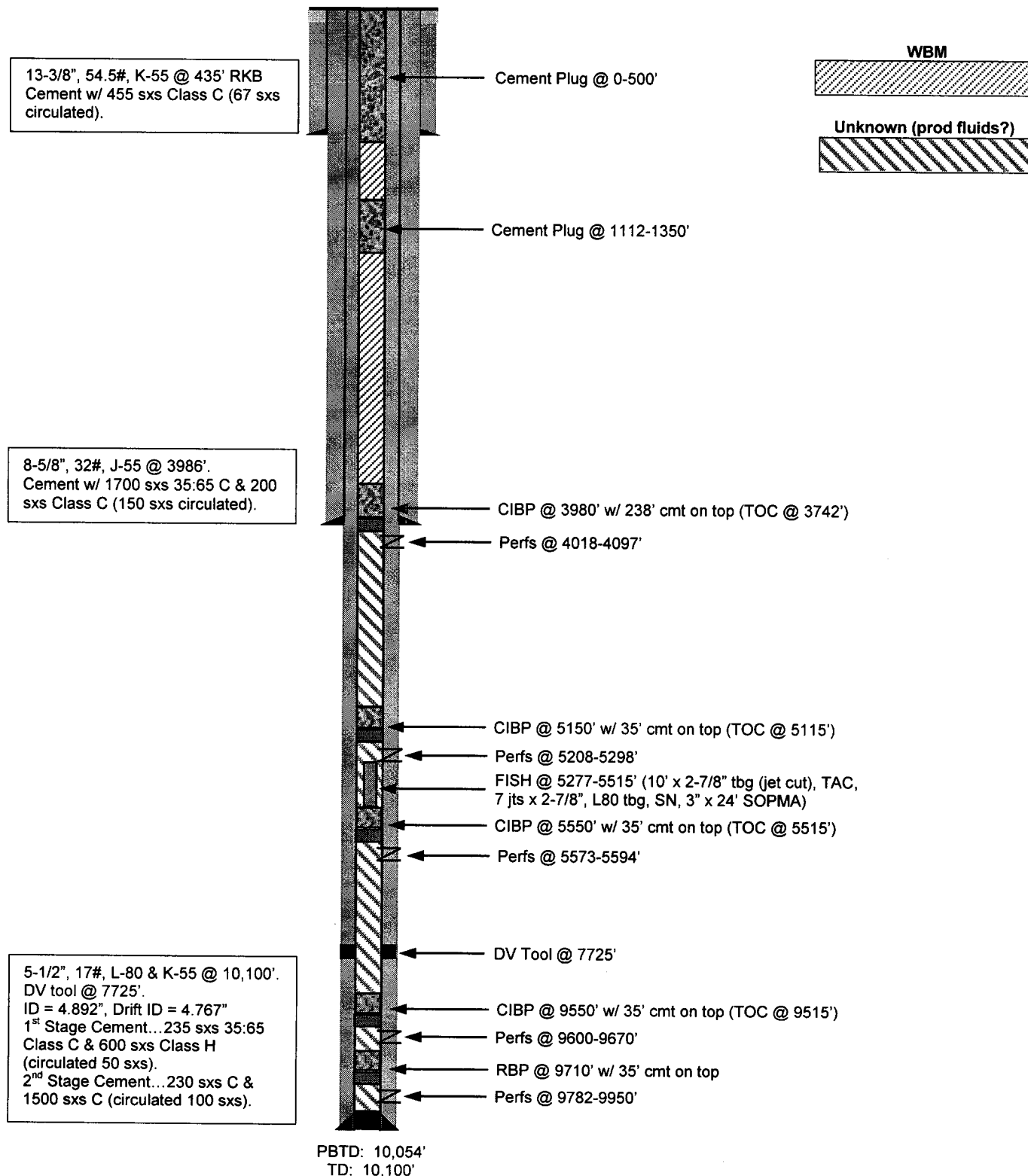
**1. WELL SUMMARY**

**1.1. WELL PROGRAM SUMMARY**

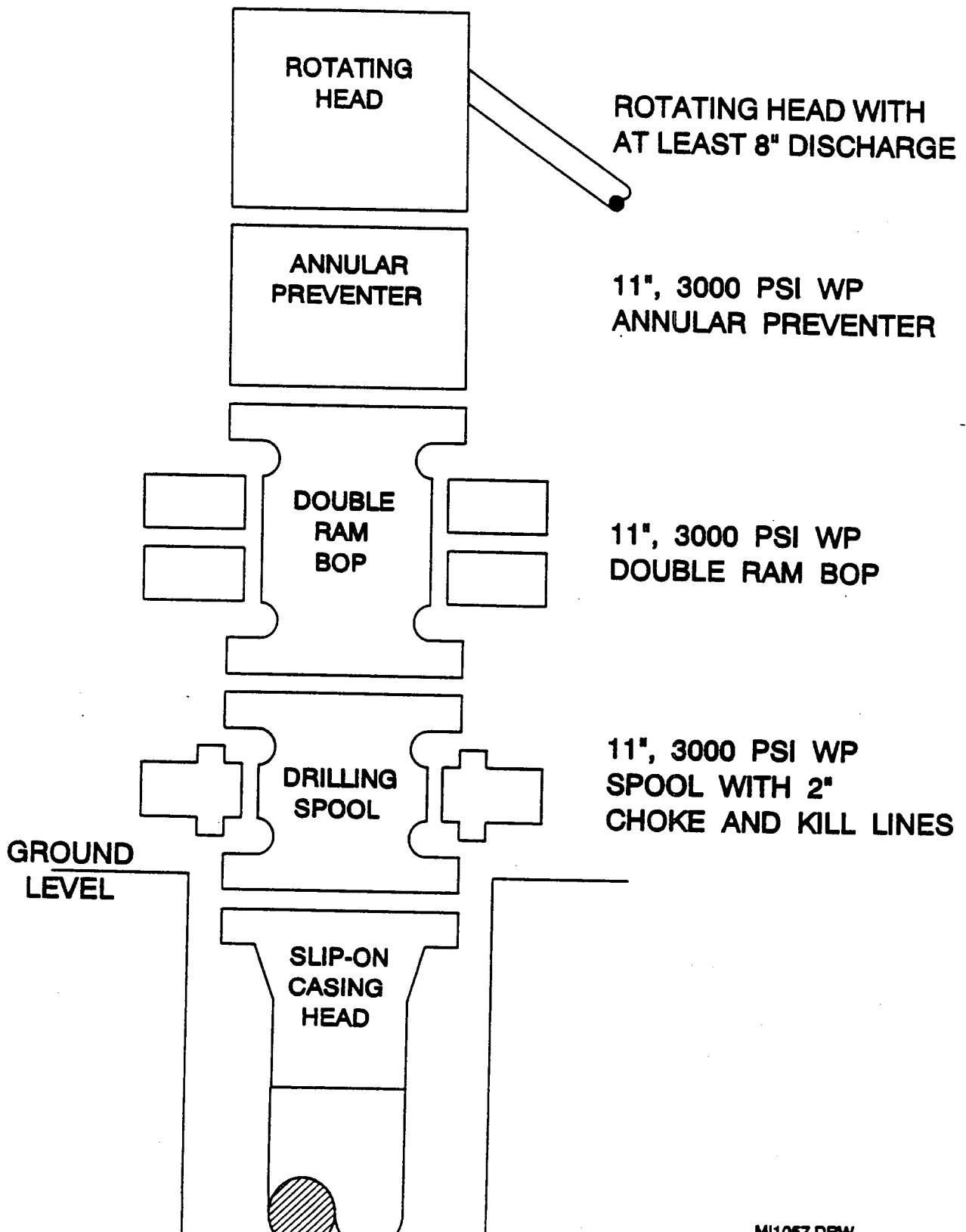
**1.1.1. Procedure Summary**

1. Dig out P&A'd wellhead and build cellar.
2. Remove wellhead P&A caps and install new wellheads onto casing strings.
3. Prep location. Clearly mark any flow lines that are within or near location.
4. MIRU WSU.
5. NU & test BOPE.
6. Drill out cement plugs and CIBP's. Clean out mud between cement plugs.
7. Squeeze existing perforations (if necessary based on losses/returns).
8. Recover fish left in hole.
9. Drill cement and CIBP.
10. Squeeze any remaining perforations.
11. Make bit and scraper/string mill run.
12. RIH w/ gauge ring.
13. Set new CIBP and test.
14. Set cement plug on CIBP.
15. ND BOPE. Cap well.
16. RDMO WSU.

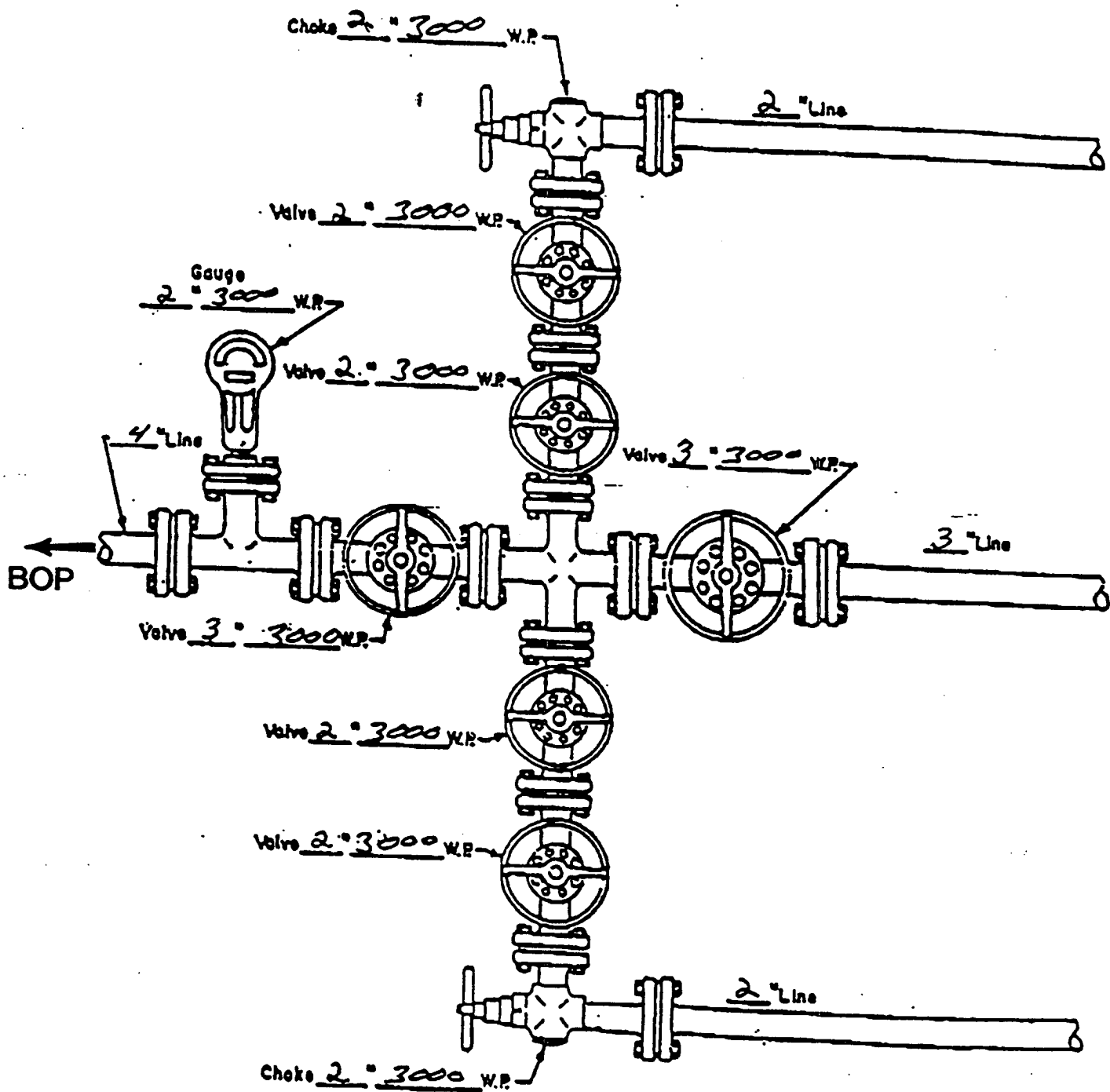
**3.3. PROPOSED WELLBORE SCHEMATIC**

**3.2. CURRENT WELLBORE SCHEMATIC****Note:** Rig reported 14' RKB

# BOP SPECIFICATIONS



# CHOKE MANIFOLD DIAGRAM



MANIFOLD  
3000 # W.P.

- ☒ Manual
- ☐ Hydraulic