

UNITED STATES
DEPARTMENT OF THE INTERIOR
BUREAU OF LAND MANAGEMENT

FORM APPROVED
OMB NO. 1004-0137
Expires March 31, 2007

SUNDRY NOTICES AND REPORTS ON WELLS

Do not use this form for proposals to drill or to re-enter an abandoned well. Use Form 3160-3 (APD) for such proposals.

SUBMIT IN TRIPLICATE - Other instructions on reverse side

1. Type of Well

☐ Oil Well ☒ Gas Well ☐ Other

2. Name of Operator

Samson Resources Company

3a. Address

Two West Second Street, Tulsa, OK 74103

3b. Phone No. (include area code)

(432) 683-7063

4. Location of Well (Footage, Sec., T., R., M., or Survey Description)

4659' FSL & 1980' FWL Sec. 5-21S-32E

5. Lease Serial No.

NMNM04229B

6. If Indian, Allottee or Tribe Name

7. If Unit or CA/Agreement, Name and/or No.

8. Well Name and No.

NM Fed F

#1

9. API Well No.

30-025-25976

10. Field and Pool, or Exploratory Area

Salt Lake South (Devonian)

11. County or Parish, State

Lea NM

12. CHECK APPROPRIATE BOX(ES) TO INDICATE NATURE OF NOTICE, REPORT, OR OTHER DATA

TYPE OF SUBMISSION

☒ Notice of Intent

☐ Subsequent Report

☐ Final Abandonment Notice

TYPE OF ACTION

☐ Acidize

☐ Alter Casing

☐ Casing Repair

☐ Change Plans

☐ Convert to Injection

☐ Deepen

☐ Fracture Treat

☐ New Construction

☒ Plug and Abandon

☐ Plug Back

☐ Production (Start/Resume)

☐ Reclamation

☐ Recomplete

☐ Temporarily Abandon

☐ Water Disposal

☐ Water Shut-Off

☐ Well Integrity

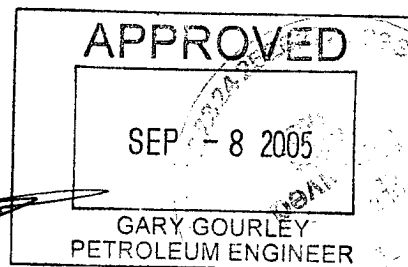
☐ Other

13. Describe Proposed or Completed Operation (clearly state all pertinent details, including estimated starting date of any proposed work and approximate duration thereof. If the proposal is to deepen directionally or recomple horizontally, give subsurface locations and measured and true vertical depths of all pertinent markers and zones. Attach the Bond under which the work will be performed or provide the Bond No. on file with BLM/BIA. Required subsequent reports shall be filed within 30 days following completion of the involved operations. If the operation results in a multiple completion or recomple in a new interval, a Form 3160-4 shall be filed once testing has been completed. Final Abandonment Notices shall be filed only after all requirements, including reclamation, have been completed, and the operator has determined that the final site is ready for final inspection.)

See attached P&A Procedure and Proposed Wellbore Diagram

SEE ATTACHED FOR
CONDITIONS OF APPROVAL

APPROVED FOR 3 MONTH PERIOD
ENDING Dec 8 2005



* ADD 'TOP of SALT' plug (1425-1525)
[SEE STIPS] ANT TAG

14. I hereby certify that the foregoing is true and correct
Name (Printed/Typed)

O. L. Farrell, III

Title

District Engineer

Date 8/29/05

THIS SPACE FOR FEDERAL OR STATE OFFICE USE

Approved by

Title

Date

Conditions of approval, if any, are attached. Approval of this notice does not warrant or certify that the applicant holds legal or equitable title to those rights in the subject lease which would entitle the applicant to conduct operations thereon.

Office

Title 18 U.S.C. Section 1001, and Title 43 U.S.C. Section 1212, makes it a crime for any person knowingly and willfully to make to any department or agency of the United States any false, fictitious or fraudulent statements or representations as to any matter within its jurisdiction.

GWW

NM Federal F Well No. 1 (011689)
Lea Co., NM
Plug & Abandon Wellbore

Current Status: Well idle with no BP potential. The BLM has notified Samson to P&A the subject well within the next 60 days.

Proposed Status: Plug and abandon wellbore in accordance with BLM requirements per the request of the BLM.

Procedure:

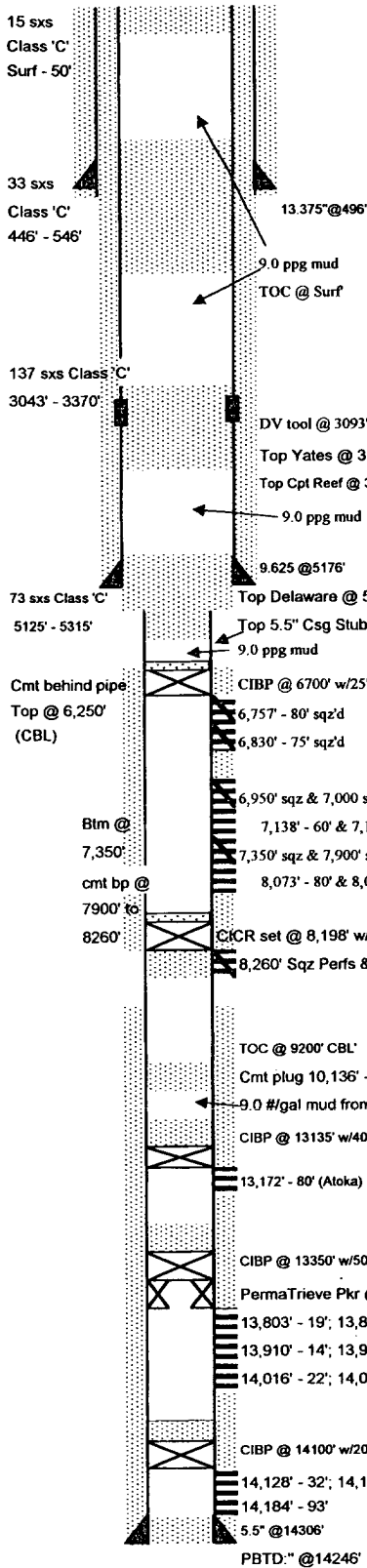
1. Notify BLM at least 24 hours before rigging up of intent to P&A the subject well.
2. Check well for pressure and record same. All casing annulus pressures should be recorded. ND tree and NU BOPE. Test BOPE to 250/2000#.
3. RU e/l and lubricator. RIH with 5 1/2", 17# CIBP. Set same @ 6,700'.
4. RIH and cap CIBP w/25' (5 sx) of Class 'C' cement mixed @ 14.8 ppg using a positive displacement bailer. The purpose of this plug is to isolate Delaware perforated interval. The cement will be spotted across 25' of 5 1/2", 17# casing (capacity: 0.1305 cu ft/ft).
5. MIRU workover rig. Pull free point on 5 1/2" to determine cut point. Cut 5 1/2" @ 5,265'.
6. TIH with 2 7/8" workstring to 8,188' and displace hole with 362 bbls of 9.0 ppg mud.
7. Pull up and spot balanced cement plug from 5,315' to 5,125' with 73 sx class 'C' cement mixed at 14.8 ppg. The purpose of this plug is to place cement across the top of the Delaware (5,215') and the 5 1/2" casing stub (5,265'). The cement will be spotted across 50' of 5 1/2", 17# casing (capacity: 0.1305 cu ft/ft) and 140' of 9 5/8", 53.50# casing (capacity: 0.3973 cu ft/ft).
8. Pull up and spot balanced cement plug from 3,370' to 3,043' with 137 sx class 'C' cement mixed at 14.8 ppg. The purpose of this plug is to place cement across the top of the Capitan Reef (3,320'), the top of the Yates (3,150') and the 9 5/8" DVT (3,093'). The cement will be spotted across 327' of 9 5/8", 53.50# casing (capacity: 0.3973 cu ft/ft).
9. Pull up and spot balanced cement plug from 546' to 446' with 33 sx class 'C' cement mixed at 14.8 ppg. The purpose of this plug is to place cement across the 13 3/8" casing shoe (496'). The cement will be spotted across 100' of 9 5/8", 53.50# casing (capacity: 0.3973 cu ft/ft).
10. Pull up and spot balanced cement plug from 50' to surface with 15 sx class 'C' cement mixed at 14.8 ppg. The cement will be spotted across 50' of 9 5/8", 53.50# casing (capacity: 0.3973 cu ft/ft).
11. Lay down and haul off tubing.
12. Cut & recover all casing strings 3' below ground level. Weld on surface plate and dry hole marker. Notify Becky Hunt of the BLM (505.234.5995) that the P&A is complete so she can prepare a reclamation order.
13. Once reclamation order is received, meet with Ms. Hunt and location clean-up contractor to determine the reclamation requirements.
14. Reclaim location. Notify BLM to witness seeding and before location is complete to ensure proper reclamation.

Required Plugs:

6,675' - 6,700'	5 sx	Class C mixed @ 14.8 ppg
5,125' - 5,315'	73 sx	Class C mixed @ 14.8 ppg
3,043' - 3,370'	137 sx	Class C mixed @ 14.8 ppg
446' - 546'	33 sx	Class C mixed @ 14.8 ppg
0' - 50'	15 sx	Class C mixed @ 14.8 ppg

J. L. Farrell III
District Engineer
August 26, 2005

Proposed P&A Wellbore



WELL N/ New Mexico Fed "F" Com #1				FIELD: Salt Lake South				LSE#: 011689					
STATE: NM				COUNTY: Lea				LOCATION: Sec 5-21S-32E; 4659' FSL, 1980' FWL					
API NO: 30-025-25976				SPUD DATE: 7/20/1978				FORMATION: Devonian					
TD: 14306'				PBTD: 14246'				ELEVATION: 3668' GL					
PIPE RECORD								CEMENT & HOLE DATA					
CSG	OD	GRADE	THD	WT/FT	TOP	BTM	# JTS	BIT SIZE	DEPTH	SX	WT.	TOC	
Surf	13.375"	K-55	ST&C	54.50#	0'	496'		17.500"		650		Surf	
Intr	9.625"	N-80	8rd	53.50#	0'	5176'		12.250"		2325		Surf	
Prod	5.500"	S-95	Buttress	17.00#	0'	2032'		7.875"		875		9200' CBL	
			8rd	17.00#	2032'	11544'							
			8rd	20.00#	11544'	14306'							
Tbg													
Remarks:								CAPACITIES (bbl/ft) (ft/bbl) (cf/ft)					
8/31/04: Driller PBTD @ 8188'								TBG: in. #					
9/1/04: Adz perms 7138' - 7200' w/2650 gals 7.5% Delaware acid & 78 ball sealers								CSG: in. #					
9/7/04: Fracture stimulate perms 7138' - 7160' and 7180' - 7200' w/18,852 gals J533-D clrfac fluid containing 23,866# 16/30 Jordan snd in 0 to 4 ppg stgs								VOLUME BETWEEN (bbl/ft) (ft/bbl) (cf/ft)					
11/16/04: Recover 2-7/8" workstring left in well during Delaware recompletion ops.								TBGxCSG: x					
								TBGxCSG:					
								CSGxHOLE:					
								TBGxHOLE:					
								TBGxHOLE:					
								PERFORATION RECORD					
								DATE	TOP	BTM	ZONE	STATUS	SPF
								10/1/1978	14128'	14192'	Morrow	Abandoned	
								10/1/1978	13803'	14034'	Morrow	Abandoned	
								1/1/1990	6830'	6875'	Delaware	Abandoned	
								1/1/1990	6757'	6780'	Delaware	Abandoned	
								1/1/1990	6900'	6900'	Block Squeeze		
								1/1/1990	6700'	6700'	Block Squeeze		
								8/25/1995	13172'	13180'	Atoka	Abandoned	4
								8/31/2004	8088'	8105'	Delaware	Abandoned	3
								8/31/2004	8073'	8080'	Delaware	Abandoned	3
								8/31/2004	7180'	7200'	Delaware	Abandoned	3
								8/31/2004	7138'	7160'	Delaware	Abandoned	3
SRC Wt%:													
LOGS:													
LANDMAN:								GEOLOGIST:					
TUBULAR GOODS PERFORMANCE													
								ID (in)	Drift (in)	Collapse* (psi)	Burst* (psi)	Tensile* (lbs)	
Material													
" #													
" #													
" #													
* Safety Factor Not Included													

TD:14306'

PREPARED BY: R. Burditt

DATE: 8/29/2005

Updated:

OFFICE: (432) 683-7063

FAX: (432) 683-6847

WELL N/ New Mexico Fed "F" Com #1
 STATE: NM
 API NO: 30-025-25976
 TD: 14306'

FIELD: Salt Lake South
 COUNTY: Lea
 SPUD DATE: 7/20/1978
 PBD: 14246'

LSE#: 011689
 LOCATION: Sec 5-21S-32E; 4659' FSL, 1980' FWL
 FORMATION: Devonian
 ELEVATION: 3668' GL

PIPE RECORD								CEMENT & HOLE DATA				
CSG	OD	GRADE	THD	WT/FT	TOP	BTM	# JTS	BIT SIZE	DEPTH	SX	WT.	TOC
Surf	13.375"	K-55	ST&C	54.50#	0'	496'		17.500"		650		Surf
Intr	9.625"	N-80	8rd	53.50#	0'	5176'		12.250"		2325		Surf
Prod	5.500"	S-95	Buttress	17.00#	0'	2032'		7.875"		875		9200' CBL
			8rd	17.00#	2032'	11544'						
Tbg			8rd	20.00#	11544'	14306'						

Remarks:

8/31/04: Driller PBD @ 8188'
 9/1/04: Adz perms 7138' - 7200' w/2650 gals 7.5% Delaware acid & 78 ball sealers
 9/7/04: Fracture stimulate perms 7138' - 7160' and 7180' - 7200' w/18,852 gals J533-D
 cfrac fluid containing 23,866# 16/30 Jordan sand in 0 to 4 ppg slgs
 11/16/04: Recover 2-7/8" workstring left in well during Delaware recompletion ops.

CAPACITIES (bbl/ft) (ft/bbl) (c/ft)

TBG: in. #
 CSG: in. #

VOLUME BETWEEN (bbl/ft) (ft/bbl) (c/ft)

TBGxCSG: x
 TBGxCSG:
 CSGxHOLE:
 TBGxHOLE:
 TBGxHOLE:

PERFORATION RECORD

DATE	TOP	BTM	ZONE	STATUS	SPF
10/1/1978	14128'	14192'	Morrow	Abandoned	
10/1/1978	13803'	14034'	Morrow	Abandoned	
1/1/1990	6830'	6875'	Delaware	Abandoned	
1/1/1990	6757'	6780'	Delaware	Abandoned	
1/1/1990	6900'	6900'	Block Squeeze		
1/1/1990	6700'	6700'	Block Squeeze		
8/25/1995	13172'	13180'	Atoka	Abandoned	4
8/31/2004	8088'	8105'	Delaware	Open	3
8/31/2004	8073'	8080'	Delaware	Open	3
8/31/2004	7180'	7200'	Delaware	Open	3
8/31/2004	7138'	7160'	Delaware	Open	3

SRC WI%:

LOGS:

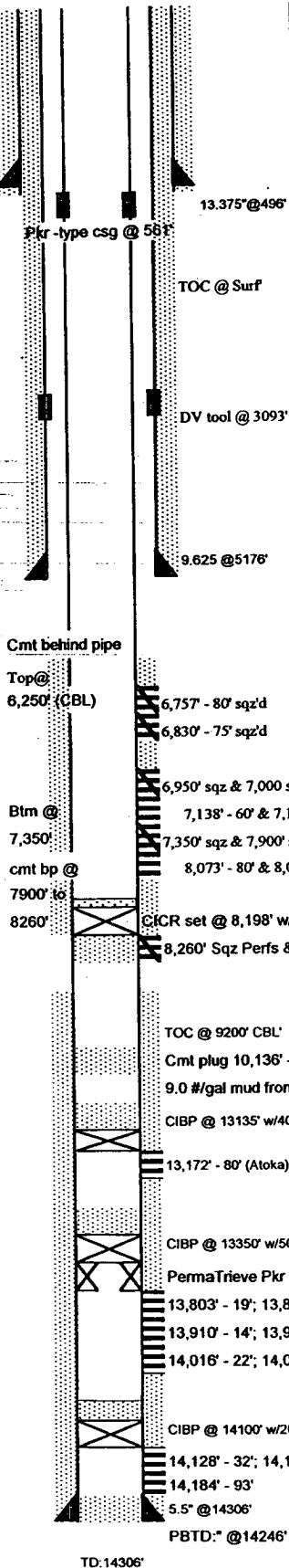
LANDMAN:

GEOLOGIST:

TUBULAR GOODS PERFORMANCE

Material	ID (in)	Drift (in)	Collapse* (psi)	Burst* (psi)	Tensile* (lbs)
13.375" K-55 ST&C 54.5#					
" #					
" #					

* Safety Factor Not Included



TD: 14306'

PREPARED BY: R. Burditt

DATE: 8/9/2005

Updated:

OFFICE: (432) 683-7063

FAX: (432) 683-6847