

District I

1625 N. French Dr., Hobbs, NM 88240

District II

1301 W. Grand Avenue, Artesia, NM 88210

District III

1000 Rio Brazos Road, Aztec, NM 87410

District IV

1220 S. St. Francis Dr., Santa Fe, NM 87505

State of New Mexico
Energy Minerals and Natural Resources

Form C-101

May 27, 2004

Oil Conservation Division

1220 South St. Francis Dr.

Santa Fe, NM 87505

Submit to appropriate District Office

☐ AMENDED REPORT

APPLICATION FOR PERMIT TO DRILL, RE-ENTER, DEEPEN, PLUGBACK, OR ADD A ZONE

| | | |
|---|--|---|
| ¹ Operator Name and Address Platinum Exploration Inc. 550 W. Texas, Suite 500 Midland, TX 79701 | | ² OGRID Number 227103 |
| ³ Property Code 300903 | | ⁴ API Number 30-025-07135 |
| ⁵ Property Name Angel | | ⁶ Well No. 1 |
| ⁹ Proposed Pool 1 SWD; Devonian (96101) | | ¹⁰ Proposed Pool 2 |

⁷ Surface Location

| UL or lot no. | Section | Township | Range | Lot Idn | Feet from the | North/South line | Feet from the | East/West line | County |
|---------------|---------|----------|-------|---------|---------------|------------------|---------------|----------------|--------|
| K | 5 | 12-S | 38-E | | 1980 | South | 1980 | West | Lea |

⁸ Proposed Bottom Hole Location If Different From Surface

| UL or lot no. | Section | Township | Range | Lot Idn | Feet from the | North/South line | Feet from the | East/West line | County |
|---------------|---------|----------|-------|---------|---------------|------------------|---------------|----------------|--------|
| | | | | | | | | | |

Additional Well Information

| | | | | |
|---|-----------------------------------|---|------------------------------------|--|
| ¹¹ Work Type Code E | ¹² Well Type Code S | ¹³ Cable/Rotary R | ¹⁴ Lease Type Code P | ¹⁵ Ground Level Elevation 3880' KB |
| ¹⁶ Multiple N | ¹⁷ TVD 12,800 | ¹⁸ Formation Devonian | ¹⁹ Contractor | ²⁰ Spud Date ASAP |
| Depth to Groundwater 65' | | Distance from nearest fresh water well 310' | | Distance from nearest surface water >1000' |
| Pit: Liner: Synthetic <input checked="" type="checkbox"/> 12 mils thick Clay <input type="checkbox"/> Pit Volume: 500 bbls Closed-Loop System <input type="checkbox"/> Drilling Method: Fresh Water <input checked="" type="checkbox"/> Brine <input checked="" type="checkbox"/> Diesel/Oil-based <input type="checkbox"/> Gas/Air <input type="checkbox"/> | | | | |

²¹ Proposed Casing and Cement Program

| Hole Size | Casing Size | Casing weight/foot | Setting Depth | Sacks of Cement | Estimated TOC |
|-----------|-------------|--------------------|---------------|-----------------|---------------|
| 17" | 13 3/8" | 50# | 358' | 500 | Surface |
| 11" | 8-5/8" | 32# | 4500' | 2000 | 270' TS |
| 7 7/8" | 5-1/2" | 17/20# | 12,107' | 1250 | 5,297' Calc |
| | | | | | |
| | | | | | |

²² Describe the proposed program. If this application is to DEEPEN or PLUG BACK, give the data on the present productive zone and proposed new productive zone. Describe the blowout prevention program, if any. Use additional sheets if necessary.

SWD Order 992 - Approved 9/2/05

The purpose of this application is to re-enter the plugged and abandoned Angel # 1 well, deepen it to 12,800', and convert it to a salt water disposal well. The 5-1/2" casing will be tied-back to 4,400', inside the 8 5/8". A tapered tubing string of 4 1/2" and 3 1/2" L-80 IPC tubing will be run to 12,080' and produced Devonian water will be disposed into the open hole Devonian formation from 12,107'-12,800'.

²³ I hereby certify that the information given above is true and complete to the best of my knowledge and belief. I further certify that the drilling pit will be constructed according to NMOCD guidelines ☒, a general permit ☐, or an (attached) alternative OCD-approved plan ☐.

Printed name: Julie Figel

Title: Agent

E-mail Address: jfigel@t3wireless.com

Date: 9/9/05

Phone: 432/687-1664 Ext 123

OIL CONSERVATION DIVISION

Approved by:

Title:

Approval Date:

Expiration Date:

SEP 15 2005

Conditions of Approval Attached ☐

Permit Expires 1 Year From Approval
Date Unless Drilling Underway

Re-Entry

District I
1625 N. French Dr., Hobbs, NM 88240

District II
1301 W. Grand Avenue, Artesia, NM 88210

District III
1000 Rio Brazos Rd., Aztec, NM 87410

District IV
1220 S. St. Francis Dr., Santa Fe, NM 87505

State of New Mexico
Energy, Minerals & Natural Resources Department
OIL CONSERVATION DIVISION
1220 South St. Francis Dr.
Santa Fe, NM 87505

Form C-102
Revised June 10, 2003
Submit to Appropriate District Office
State Lease - 4 Copies
Fee Lease - 3 Copies

☐ AMENDED REPORT

WELL LOCATION AND ACREAGE DEDICATION PLAT

| | | | |
|---|--|---------------------------------|---|
| ¹ API Number 30-025-07135 | | ² Pool Code 96101 | ³ Pool Name SWD: Devonian |
| ⁴ Property Code 300903 | ⁵ Property Name Angel | | ⁶ Well Number 1 |
| ⁷ OGRID No 227103 | ⁸ Operator Name Platinum Exploration, Inc. | | ⁹ Elevation 3,880' KB |

¹⁰ Surface Location

| | | | | | | | | | |
|--------------------|--------------|------------------|---------------|---------|-----------------------|---------------------------|-----------------------|------------------------|---------------|
| UL or lot no. K | Section 5 | Township 12-S | Range 38-E | Lot Idn | Feet from the 1980 | North/South line South | Feet from the 1980 | East/West line West | County Lea |
|--------------------|--------------|------------------|---------------|---------|-----------------------|---------------------------|-----------------------|------------------------|---------------|

¹¹ Bottom Hole Location If Different From Surface

| | | | | | | | | | |
|-------------------------------------|---------|-------------------------------|----------------------------------|---------|------------------------------------|------------------|---------------|----------------|--------|
| UL or lot no. | Section | Township | Range | Lot Idn | Feet from the | North/South line | Feet from the | East/West line | County |
| ¹² Dedicated Acres 40 | | ¹³ Joint or Infill | ¹⁴ Consolidation Code | | ¹⁵ Order No. SWD-992 | | | | |

NO ALLOWABLE WILL BE ASSIGNED TO THIS COMPLETION UNTIL ALL INTERESTS HAVE BEEN CONSOLIDATED OR A NON-STANDARD UNIT HAS BEEN APPROVED BY THE DIVISION

| | | | | |
|--|--|--|--|--|
| | <p>¹⁷ OPERATOR CERTIFICATION I hereby certify that the information contained herein is true and complete to the best of my knowledge and belief.</p> <p><i>Julie Figel</i> Signature Julie Figel</p> <p>Printed Name Agent</p> <p>Title and E-mail Address 9/9/05</p> <p>Date</p> | | | |
| | <p>¹⁸ SURVEYOR CERTIFICATION I hereby certify that the well location shown on this plat was plotted from field notes of actual surveys made by me or under my supervision, and that the same is true and correct to the best of my belief.</p> <p>Date of Survey</p> <p>Signature and Seal of Professional Surveyor:</p> | | | |
| | <p>Certificate Number</p> | | | |
| | | | | |

District I
1625 N. French Dr., Hobbs, NM 88240
District II
1301 W. Grand Avenue, Artesia, NM 88210
District III
1000 Rio Brazos Road, Aztec, NM 87410
District IV
1220 S. St. Francis Dr., Santa Fe, NM 87505

State of New Mexico
Energy Minerals and Natural Resources

Form C-144
June 1, 2004

Oil Conservation Division
1220 South St. Francis Dr.
Santa Fe, NM 87505

For drilling and production facilities, submit to appropriate NMOCD District Office.
For downstream facilities, submit to Santa Fe office

Pit or Below-Grade Tank Registration or Closure

Is pit or below-grade tank covered by a "general plan"? Yes ☐ No ☒

Type of action: Registration of a pit or below-grade tank ☒ Closure of a pit or below-grade tank ☐

Operator: Platinum Exploration, Inc. Telephone: 432-687-1664 Ext 123 e-mail address: jfigel@t3wireless.com
Address: 550 W. Texas, Suite 500 Midland, TX 79701
Facility or well name: Angel # 1 SWD API #: 35-025-07135 U/L or Qtr/Qtr_K_Sec 5 T 12S R 38E
County: Lea Latitude _____ Longitude _____ NAD: 1927 ☐ 1983 ☐ Surface Owner Federal ☐ State ☐ Private ☒ Indian ☐

Pit

Type: Drilling ☒ Production ☐ Disposal ☐
Workover ☐ Emergency ☐
Lined ☒ Unlined ☐
Liner type: Synthetic ☒ Thickness 12 mil Clay ☐
Pit Volume 1600 bbl

Below-grade tank

Volume: _____ bbl Type of fluid: _____
Construction material: _____
Double-walled, with leak detection? Yes ☐ If not, explain why not. _____

Depth to ground water (vertical distance from bottom of pit to seasonal high water elevation of ground water.) 65'

| | |
|--|-------------|
| Less than 50 feet | (20 points) |
| 50 feet or more, but less than 100 feet XX | (10 points) |
| 100 feet or more | (0 points) |

Wellhead protection area: (Less than 200 feet from a private domestic water source, or less than 1000 feet from all other water sources.) 310'

| | |
|--------|-------------|
| Yes XX | (20 points) |
| No | (0 points) |

Distance to surface water: (horizontal distance to all wetlands, playas, irrigation canals, ditches, and perennial and ephemeral watercourses.) >1000

| | |
|---|-------------|
| Less than 200 feet | (20 points) |
| 200 feet or more, but less than 1000 feet | (10 points) |
| 1000 feet or more XX | (0 points) |

Ranking Score (Total Points)

30

If this is a pit closure: (1) attach a diagram of the facility showing the pit's relationship to other equipment and tanks. (2) Indicate disposal location: (check the onsite box if you are burying in place) onsite ☐ offsite ☐ If offsite, name of facility _____. (3) Attach a general description of remedial action taken including remediation start date and end date. (4) Groundwater encountered: No ☐ Yes ☐ If yes, show depth below ground surface _____ ft. and attach sample results. (5) Attach soil sample results and a diagram of sample locations and excavations.

Additional Comments:

I hereby certify that the information above is true and complete to the best of my knowledge and belief. I further certify that the above-described pit or below-grade tank has been/will be constructed or closed according to NMOCD guidelines ☒, a general permit ☐, or an (attached) alternative OCD-approved plan ☐.

Date: 9/9/05

Printed Name/Title Julie Figel / Agent

Signature

Julie Figel

Your certification and NMOCD approval of this application/closure does not relieve the operator of liability should the contents of the pit or tank contaminate ground water or otherwise endanger public health or the environment. Nor does it relieve the operator of its responsibility for compliance with any other federal, state, or local laws and/or regulations.

ORIGINAL SIGNED BY
PAUL F. KAUTZ
PETROLEUM ENGINEER
Signature

Approval:

Printed Name/Title _____

Date: SEP 15 2005

CURRENT**Angel No. 1 SWD**

(formerly Aztec Adamson No. 1)

1980' FSL & 1980' FWL

Unit K, Sec 5, T-12S, R-38E

Lea County, NM

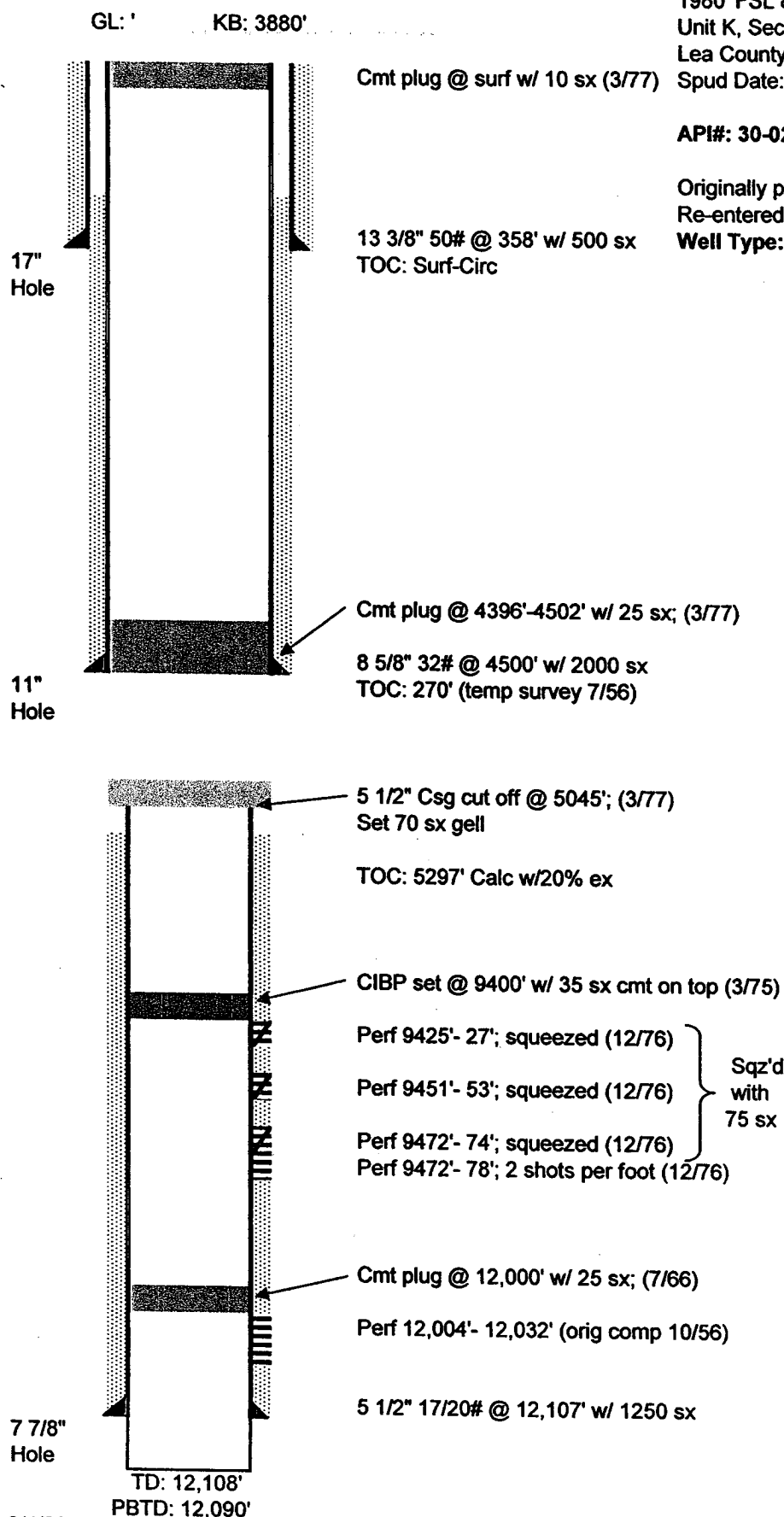
Spud Date: 7/14/56

API#: 30-025- 07135

Originally plugged 7/66

Re-entered in Wolfcamp 12/76

Well Type: Plugged (3/77)



8/4/2005

PROPOSED**Angel No. 1 SWD**

(formerly Aztec Adamson No. 1)

1980' FSL & 1980' FWL

Unit K, Sec 5, T-12S, R-38E

Lea County, NM

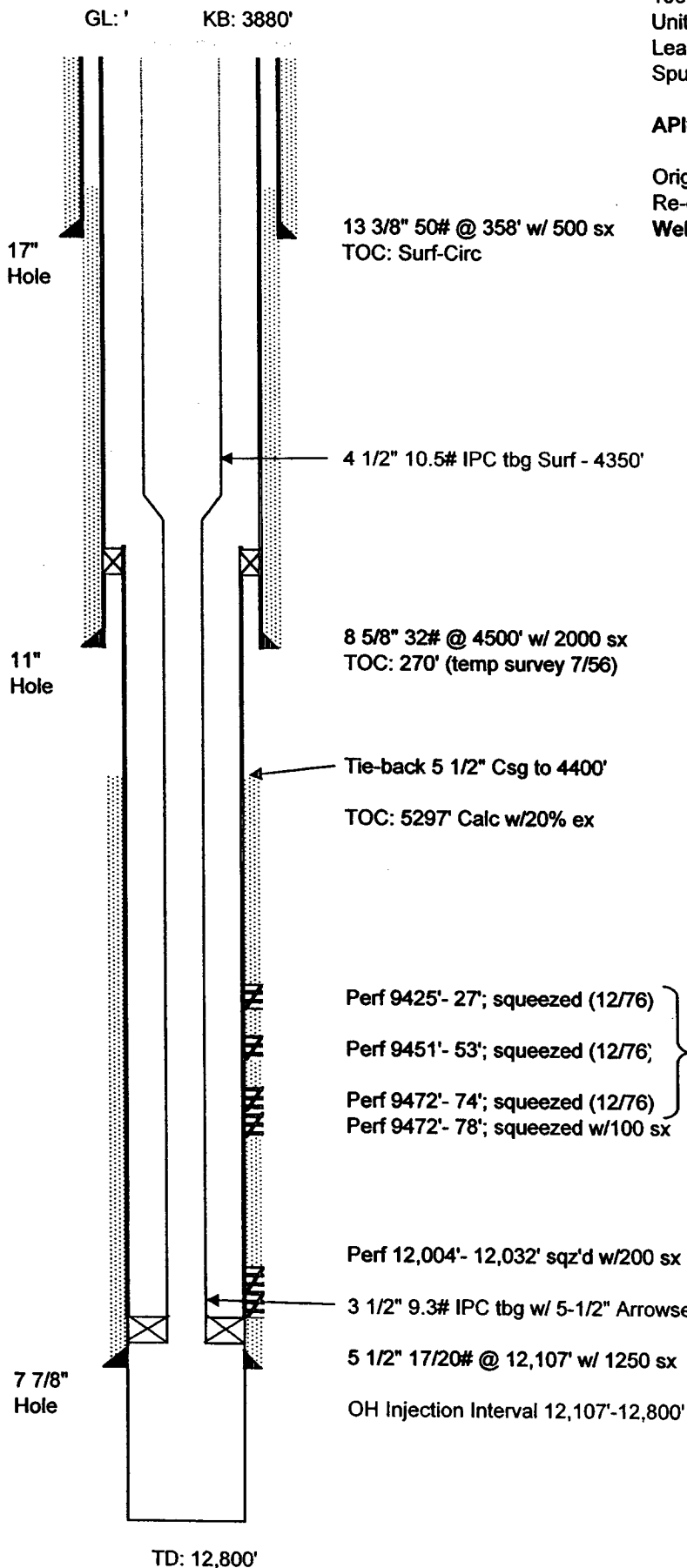
Spud Date: 7/14/56

API#: 30-025-07135

Originally plugged 7/66

Re-entered in Wolfcamp 12/76

Well Type: Plugged (3/77)

**Formation tops**

| | |
|-------------|---------|
| Yates | 3050' |
| San Andres | 4437' |
| Abo | 7818' |
| Penn | 9046' |
| Miss. | 11,322' |
| Devonian | 12,000' |
| O/W Contact | 12,060' |

Sqz'd
with
75 sx

| | |
|-------------------------|-------------------------------|
| Max Injection Rate | 20,000 BPD |
| Max Injection Pressure | 2,500 psi |
| Avg. Injection Rate | 15,000 BPD |
| Avg. Injection Pressure | 1500 psi |
| Injection Tubing | 4 1/2"/3 1/2" L-80 IPC Tubing |
| Injection Interval | 12,107' to 12,800' Devonian |

3M BOP

