

Form C-102
Revised October 12, 2005
Submit to Appropriate District Office
State Lease- 4 Copies
Fee Lease- 3 Copies

☐ AMENDED REPORT

WELL LOCATION AND ACREAGE DEDICATION PLAT

API Number 30-025-40530	Pool Code 97900	Pool Name Red Hills; Bone Spring Upper Shale
Property Code 39180	Property Name <i>VACA "24" FED. COM</i>	Well Number <i>3H</i>
OGRID No. 7377	Operator Name <i>EOG RESOURCES, INC.</i>	Elevation <i>3339.4'</i>

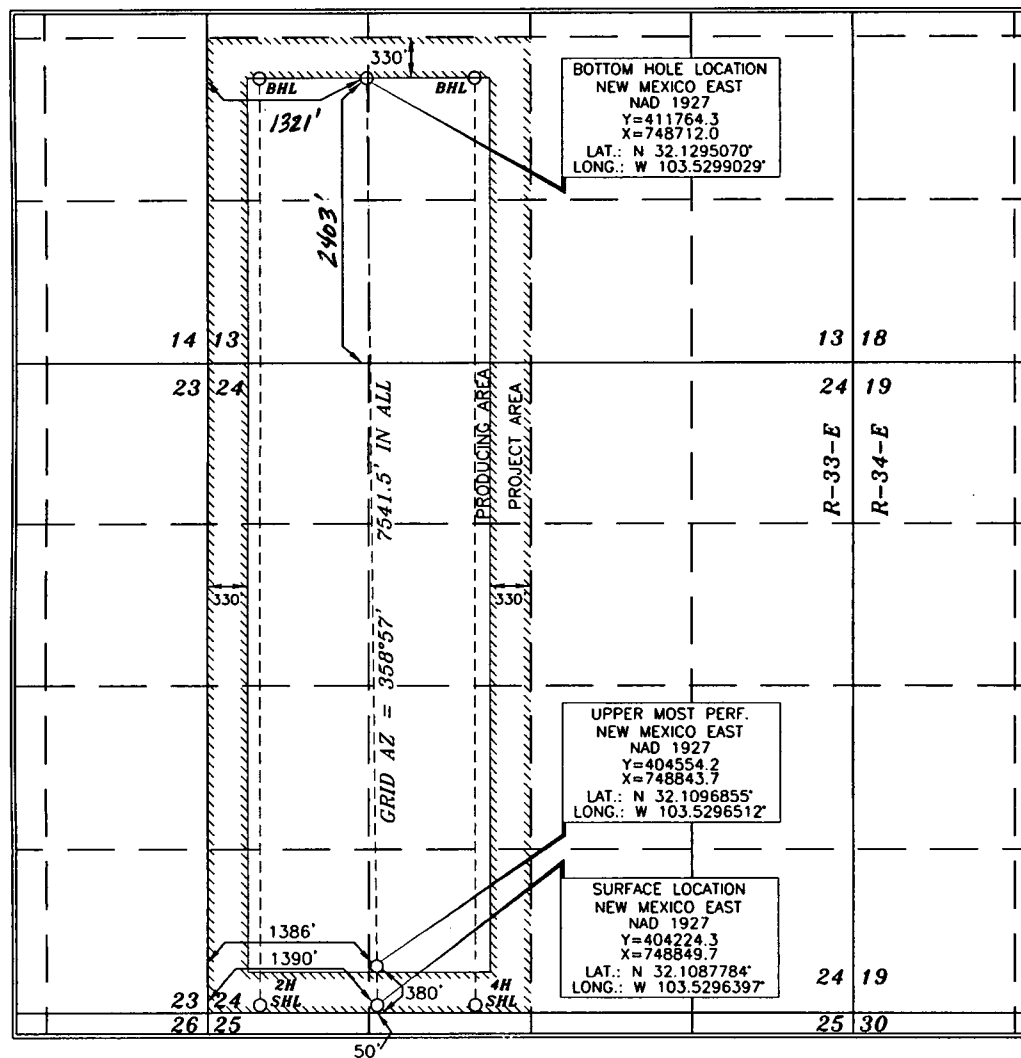
Surface Location

UL or lot no.	Section	Township	Range	Lot Idn	Feet from the	North/South line	Feet from the	East/West line	County
<i>N</i>	<i>24</i>	<i>25 SOUTH</i>	<i>33 EAST, N.M.P.M.</i>		<i>50'</i>	<i>SOUTH</i>	<i>1390'</i>	<i>WEST</i>	<i>LEA</i>

Bottom Hole Location If Different From Surface

UL or lot no. <i>L</i>	Section <i>13</i>	Township <i>25 SOUTH</i>	Range <i>33 EAST, N.M.P.M.</i>	Lot Idn	Feet from the <i>2403</i>	North/South line <i>SOUTH</i>	Feet from the <i>1321</i> <i>1423</i>	East/West line <i>WEST</i>	County <i>LEA</i>
Dedicated Acres <i>480</i>		Joint or Infill	Consolidation Code	Order No.					

No allowable will be assigned to this completion until all interests have been consolidated or a non-standard unit has been approved by the division.



OPERATOR CERTIFICATION

I hereby certify that the information contained herein is true and complete to the best of my knowledge and belief, and that this organization either owns a working interest or unleased mineral interest in the land including the proposed bottom hole location or has a right to drill this well at this location pursuant to a contract with an owner of such a mineral or working interest, or to a voluntary pooling agreement or a compulsory pooling order heretofore entered by the division.

Signature Stan Wagner Date 4/10/13

Stan Wagner
Printed Name

SURVEYOR CERTIFICATION

I hereby certify that the well location shown on this plot was plotted from field notes of actual soundings made by me or under my supervision, and that the same is true and correct to the best of my belief.

15079
SEPTEMBER 15, 2011
Date of Survey

Signature and Seal of
Professional Engineer

Terry J. Abel 10/4/2011
Certificate Number 15079

WO# 110915WL-e (KA)