

District I  
1625 N. French Dr., Hobbs, NM 88240  
District II  
1301 W. Grand Avenue, Artesia, NM 88210  
District III  
1000 Rio Brazos Road, Aztec, NM 87410  
District IV  
1220 S. St. Francis Dr., Santa Fe, NM 87505

State of New Mexico  
Energy Minerals and Natural Resources

Oil Conservation Division  
1220 South St. Francis Dr.  
Santa Fe, NM 87505

Form C-144  
July 29, 2004

For drilling and production facilities, submit to appropriate NMOCD District Office.  
For downstream facilities, submit to Santa Fe office

**Pit or Below-Grade Tank Registration or Closure**

Is pit or below-grade tank covered by a "general plan"? Yes ☐ No ☒

Type of action: Registration of a pit or below-grade tank ☒ Closure of a pit or below-grade tank ☒

Operator: Apache Corporation Telephone: (918) 491 - 4900 e-mail address: glenn.bone@apachecorp.com  
Address: Two Warren Place, Suite 1500, 6120 S. Yale Tulsa Oklahoma 74136-4224  
Facility or well name: State Q # 3 API #: 30-025-37483 U/L or Qtr/Qtr O Sec 36 T 21S R 37E  
County: Lea Latitude 32°25'50.72"N Longitude 103°06'54.37"W NAD: 1927 ☒ 1983 ☐ Surface Owner Federal ☐ State ☒ Private ☐ Indian ☐

**Pit**

Type: Drilling ☒ Production ☐ Disposal ☐

Workover ☐ Emergency ☐

Lined ☒ Unlined ☐

Inner type: Synthetic ☒ Thickness 12 mil Clay ☐ Volume

7105 bbl

**Below-grade tank**

Volume:        bbl Type of fluid:       

Construction material:       

Double-walled, with leak detection? Yes ☐ If not, explain why not.

Depth to ground water (vertical distance from bottom of pit to seasonal high water elevation of ground water.)

Less than 50 feet

(20 points)

50 feet or more, but less than 100 feet - 58 ft

(10 points)

10 Pts

100 feet or more

( 0 points)

Wellhead protection area: (Less than 200 feet from a private domestic water source, or less than 1000 feet from all other water sources.)

Yes

(20 points)

No

( 0 points)

Distance to surface water: (horizontal distance to all wetlands, playas, irrigation canals, ditches, and perennial and ephemeral watercourses.)

Less than 200 feet

(20 points)

200 feet or more, but less than 1000 feet

(10 points)

1000 feet or more

( 0 points)

**Ranking Score (Total Points)**

**10 Points**

**If this is a pit closure:** (1) attach a diagram of the facility showing the pit's relationship to other equipment and tanks. (2) Indicate disposal location:

onsite ☒ offsite ☐ If offsite, name of facility       . (3) Attach a general description of remedial action taken including remediation start date and end date. (4) Groundwater encountered: No ☐ Yes ☐ If yes, show depth below ground surface        ft. and attach sample results. (5) Attach soil sample results and a diagram of sample locations and excavations.

I hereby certify that the information above is true and complete to the best of my knowledge and belief. I further certify that the above-described pit or below-grade tank has been/will be constructed or closed according to NMOCD guidelines ☒, a general permit ☐, or an (attached) alternative OCD-approved plan ☐.

Date: 10/4/05

Printed Name/Title Glenn Bone - Drilling Engineer

Signature       

Our certification and NMOCD approval of this application/closure does not relieve the operator of liability should the contents of the pit or tank contaminate ground water or otherwise endanger public health or the environment. Nor does it relieve the operator of its responsibility for compliance with any other federal, state, or local laws and/or regulations.

Approval:

Date: OCT 07 2005

Printed Name/Title       

Signature       

PETROLEUM ENGINEER

This is a topographic map of a section of Minnesota, showing the boundary between Minnesota and Wisconsin. The map includes contour lines, a grid, and labels for 'STATE Q #3', 'PIPELINE', 'Roadside Park', and 'Gravel Pit'. The map is oriented with North at the top.

Key features and labels include:

- Gravel Pit**: Located in the upper left corner.
- BM 3360**: A benchmark located near the center-left.
- STATE Q #3**: A label in a box, likely indicating a specific area or project.
- PIPELINE**: Two labels indicating the location of a pipeline, one near the center-right and one near the bottom-right.
- Roadside Park**: Located on the right side of the map.
- Contour Lines**: Various contour lines are shown, with elevations such as 3360, 3375, 3400, and 3429.
- Grid**: A grid system is overlaid on the map, with numbers like 36, 31, and 30 visible.
- Other Labels**: '176' and '18' are circled numbers, and '3375' and '3376' are specific elevation points.

CONTOUR INTERVAL:  
EUNICE NE, N.M. - 10'

SURVEY N.M.P.M.

COUNTY \_\_\_\_\_ LEA \_\_\_\_\_

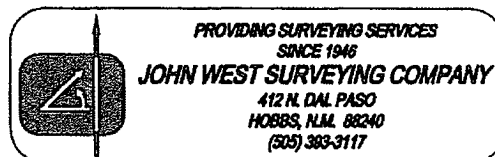
DESCRIPTION 990' FSL & 2310' FEL

ELEVATION 3362'

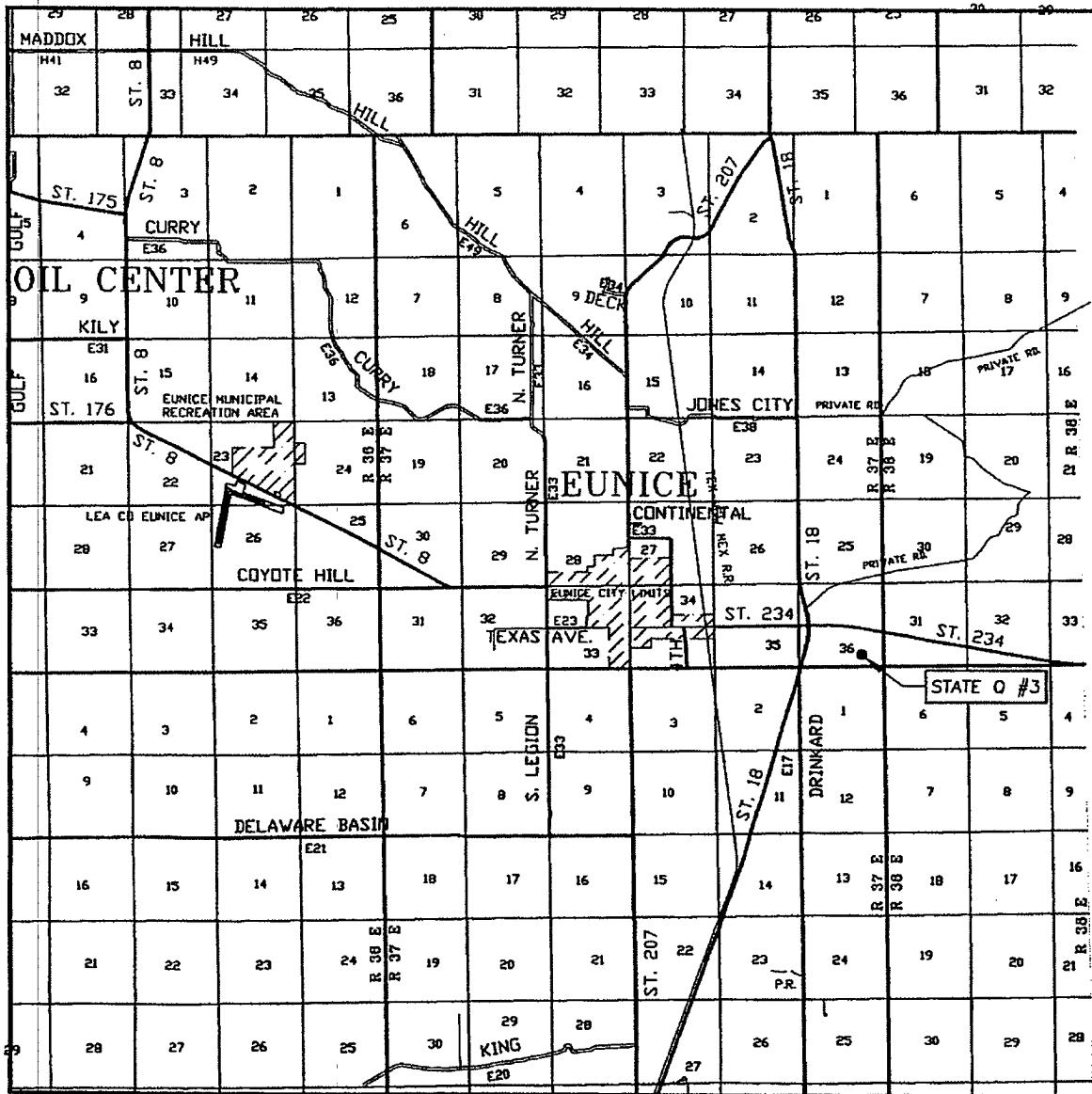
OPERATOR APACHE CORPORATION

LEASE STATE Q

U.S.G.S. TOPOGRAPHIC MAP  
EUNICE NE, N.M.

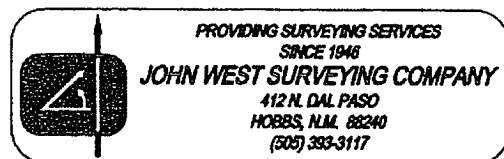


# VICINITY MAP

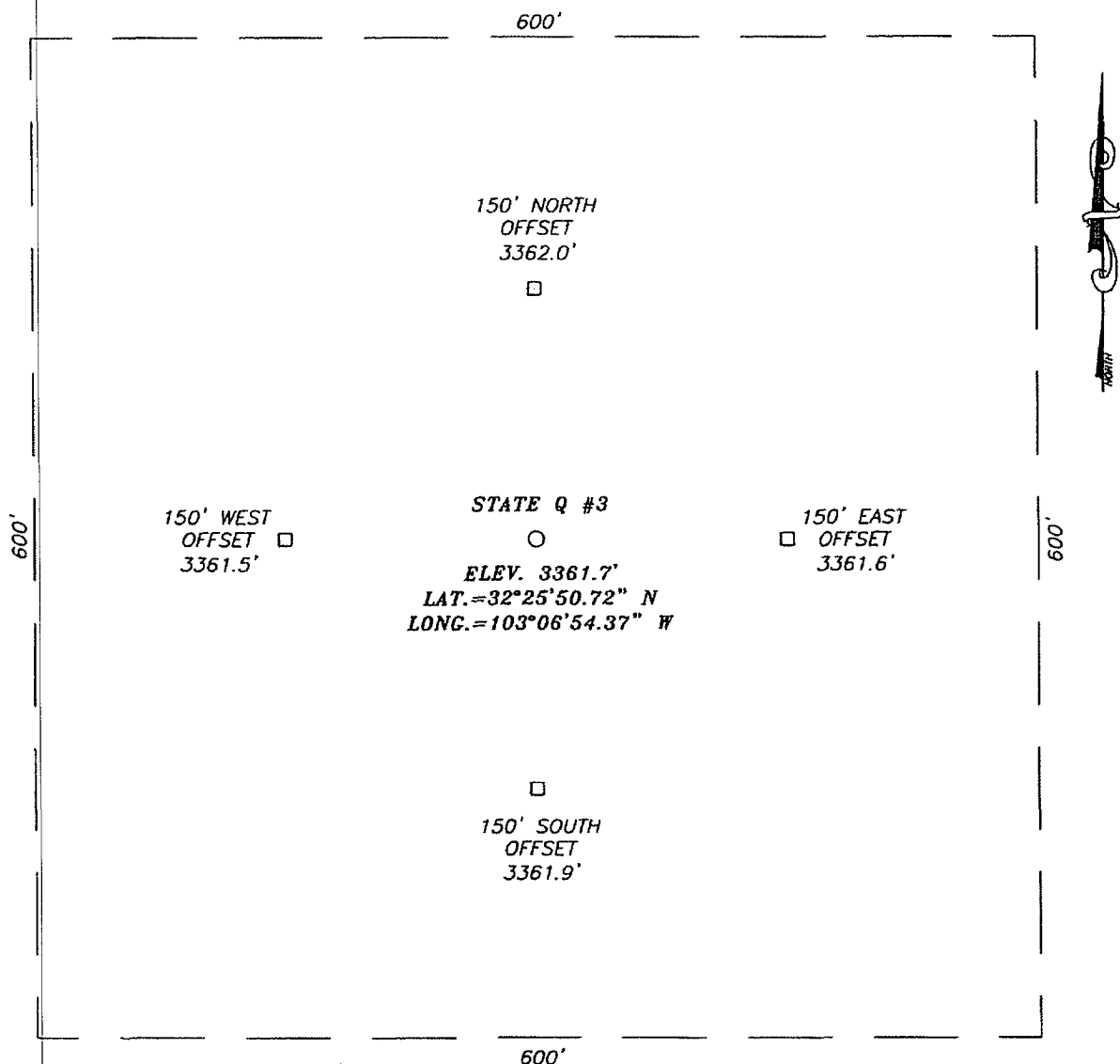


SCALE: 1" = 2 MILES

SEC. 36 TWP. 21-S RGE. 37-E  
 SURVEY N.M.P.M.  
 COUNTY LEA  
 DESCRIPTION 990' FSL & 2310' FEL  
 ELEVATION 3362'  
 OPERATOR APACHE CORPORATION  
 LEASE STATE Q

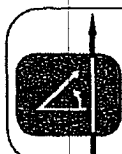
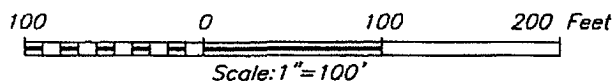


**SECTION 36, TOWNSHIP 21 SOUTH, RANGE 37 EAST, N.M.P.M.,**  
 LEA COUNTY, NEW MEXICO



**DIRECTIONS TO LOCATION**

FROM THE INTERSECTION OF ST. RD. #18 AND ST. RD. #176 GO SOUTH ON ST. RD. #18 APPROX. 0.23 MILES. TURN LEFT AND GO EAST APPROX. 0.13 MILES. ROAD BENDS TO THE RIGHT AND GO SOUTHEAST APPROX. 0.2 MILES. TURN LEFT AT "Y" INTERSECTION AND GO EAST APPROX. 0.1 MILES. THIS LOCATION IS APPROX. 600' NORTHEAST.



PROVIDING SURVEYING SERVICES  
 SINCE 1946  
**JOHN WEST SURVEYING COMPANY**  
 412 N. DAL PASO  
 HOBBS, N.M. 88240  
 (505) 393-3117

**APACHE CORPORATION**

STATE Q #3 WELL  
 LOCATED 990 FEET FROM THE SOUTH LINE  
 AND 2310 FEET FROM THE EAST LINE OF SECTION 36,  
 TOWNSHIP 21 SOUTH, RANGE 37 EAST, N.M.P.M.,  
 LEA COUNTY, NEW MEXICO.

Survey Date: 6/8/05	Sheet 1 of 1 Sheets
W.O. Number: 05.11.0874	Dr By: LA
Date: 6/17/05	Rev 1: N/A
Disk: CD#4	05110874
	Scale: 1"=100'

DISTRICT I  
1625 N. FRENCH DR., HOBBES, NM 88240

DISTRICT II  
1301 W. GRAND AVENUE, ARTESIA, NM 88210

DISTRICT III  
1000 Rio Brazos Rd., Aztec, NM 87410

DISTRICT IV  
1220 S. ST. FRANCIS DR., SANTA FE, NM 87505

State of New Mexico  
Energy, Minerals and Natural Resources Department

OIL CONSERVATION DIVISION  
1220 SOUTH ST. FRANCIS DR.  
Santa Fe, New Mexico 87505

Form C-102  
Revised JUNE 10, 2003  
Submit to Appropriate District Office  
State Lease - 4 Copies  
Fee Lease - 3 Copies

WELL LOCATION AND ACREAGE DEDICATION PLAT

☐ AMENDED REPORT

API Number	Pool Code	Pool Name
Property Code	Property Name STATE Q	Well Number 3
OGRID No.	Operator Name APACHE CORPORATION	Elevation 3362'

Surface Location

UL or lot No.	Section	Township	Range	Lot Idn	Feet from the	North/South line	Feet from the	East/West line	County
0	36	21-S	37-E		990	SOUTH	2310	EAST	LEA

Bottom Hole Location If Different From Surface

UL or lot No.	Section	Township	Range	Lot Idn	Feet from the	North/South line	Feet from the	East/West line	County
Dedicated Acres	Joint or Infill	Consolidation Code	Order No.						

NO ALLOWABLE WILL BE ASSIGNED TO THIS COMPLETION UNTIL ALL INTERESTS HAVE BEEN CONSOLIDATED  
OR A NON-STANDARD UNIT HAS BEEN APPROVED BY THE DIVISION

	<b>OPERATOR CERTIFICATION</b>  I hereby certify the the information contained herein is true and complete to the best of my knowledge and belief.  <u>Lana Williams</u> Signature <u>Lana Williams</u> Printed Name <u>Sr. Dept. Clerk</u> Title <u>10/4/05</u> Date
	<b>SURVEYOR CERTIFICATION</b>  I hereby certify that the well location shown on this plat was plotted from field notes of actual surveys made by me or under my supervision and that the same is true and correct to the best of my belief.  JUNE 08, 2005 Date Surveyed LA Signature & Seal of Professional Surveyor  05.11.0874 Certificate No. GARY EIDSON 12841

DISTRICT I  
1025 N. FRENCH DR., HOBDOS, NM 88240

DISTRICT II  
1301 W. GRAND AVENUE, ARTESIA, NM 88210

DISTRICT III  
1000 Rio Brazos Rd., Aztec, NM 87410

DISTRICT IV  
1220 S. ST. FRANCIS DR., SANTA FE, NM 87505

State of New Mexico  
Energy, Minerals and Natural Resources Department

OIL CONSERVATION DIVISION  
1220 SOUTH ST. FRANCIS DR.  
Santa Fe, New Mexico 87505

Form C-102  
Revised JUNE 10, 2003  
Submit to Appropriate District Office  
State Lease - 4 Copies  
Fee Lease - 3 Copies

WELL LOCATION AND ACREAGE DEDICATION PLAT

☐ AMENDED REPORT

API Number	Pool Code	Pool Name
Property Code	Property Name STATE Q	Well Number 3
OGRID No.	Operator Name APACHE CORPORATION	Elevation 3361'

Surface Location

UL or lot No.	Section	Township	Range	Lot Idn	Feet from the	North/South line	Feet from the	East/West line	County
0	36	21-S	37-E		990	SOUTH	2310	EAST	LEA

Bottom Hole Location if Different From Surface

UL or lot No.	Section	Township	Range	Lot Idn	Feet from the	North/South line	Feet from the	East/West line	County
Dedicated Acres	Joint or Infill	Consolidation Code	Order No.						

NO ALLOWABLE WILL BE ASSIGNED TO THIS COMPLETION UNTIL ALL INTERESTS HAVE BEEN CONSOLIDATED  
OR A NON-STANDARD UNIT HAS BEEN APPROVED BY THE DIVISION

<p>GEODETIC COORDINATES NAD 27 NME  Y=522565.8 N X=875881.3 E  LAT.=32°25'50.72" N LONG.=103°06'54.37" W</p> <p>2310'</p> <p>990'</p>	<p><b>OPERATOR CERTIFICATION</b></p> <p>I hereby certify the the information contained herein is true and complete to the best of my knowledge and belief.</p> <p><i>Lana Williams</i> Signature Lana Williams Printed Name Sr. Dept. Clerk Title 10/4/05 Date</p> <p><b>SURVEYOR CERTIFICATION</b></p> <p>I hereby certify that the well location shown on this plat was plotted from field notes of actual surveys made by me or under my supervision, and that the same is true and correct to the best of my belief.</p> <p>JUNE 08, 2005</p> <p>Date Surveyed LA Signature &amp; Seal Professional Surveyor GARY EDMON 6/17/05 Certificate No. GARY EDMON 12641</p>
---	--