

District I
1625 N. French Dr., Hobbs, NM 88240
District II
1301 W. Grand Avenue, Artesia, NM 88210
District III
1000 Rio Brazos Road, Aztec, NM 87410
District IV
1220 S. St. Francis Dr., Santa Fe, NM 87505

State of New Mexico
Energy Minerals and Natural Resources

Form C-101
May 27, 2004

Oil Conservation Division
1220 South St. Francis Dr.
Santa Fe, NM 87505

Submit to appropriate District Office

☐ AMENDED REPORT

APPLICATION FOR PERMIT TO DRILL, RE-ENTER, DEEPEN, PLUGBACK, OR ADD A ZONE

¹ Operator Name and Address Matrix New Mexico Operating Company, LLC 508 West Wall #700 Midland, Texas 79701		² OGRID Number 228971
³ Property Code 35121	⁵ Property Name Presley 34	⁴ API Number 30-025-37487
⁹ Proposed Pool 1 Trinity (Wolfcamp)		¹⁰ Proposed Pool 2 None

7 Surface Location

UL or lot no.	Section	Township	Range	Lot Idn	Feet from the	North/South line	Feet from the	East/West line	County
C	34	12 S	38 E		510	North	1510	West	Lea

8 Proposed Bottom Hole Location If Different From Surface

UL or lot no.	Section	Township	Range	Lot Idn	Feet from the	North/South line	Feet from the	East/West line	County

Additional Well Information

¹¹ Work Type Code New Well	¹² Well Type Code Oil	¹³ Cable/Rotary Rotary	¹⁴ Lease Type Code Private	¹⁵ Ground Level Elevation 3711
¹⁶ Multiple No	¹⁷ Proposed Depth 9800	¹⁸ Formation Wolfcamp	¹⁹ Contractor Patterson	²⁰ Spud Date Approx 10-10-05
Depth to Groundwater 100		Distance from nearest fresh water well 11,400'		Distance from nearest surface water None
Pit: Liner: Synthetic <input checked="" type="checkbox"/> 12_mils thick Clay <input type="checkbox"/> Pit Volume: 2000_bbls Drilling Method: Fresh Water <input checked="" type="checkbox"/> Brine <input checked="" type="checkbox"/> Diesel/Oil-based <input type="checkbox"/> Gas/Air <input type="checkbox"/>				
Closed-Loop System <input type="checkbox"/>				

21 Proposed Casing and Cement Program

Hole Size	Casing Size	Casing weight/foot	Setting Depth	Sacks of Cement	Estimated TOC
17 1/2"	13 3/8"	48 #/ft	450'	350	surface
12 1/4	8-5/8	32 #/ft	4500'	2500	surface
7 7/8"	5-1/2"	17 #/ft	9900	1000	+/-4000

22 Describe the proposed program. If this application is to DEEPEN or PLUG BACK, give the data on the present productive zone and proposed new productive zone. Describe the blowout prevention program, if any. Use additional sheets if necessary.
Drill Wolfcamp well to +/-9900'. Circulate cement to surface on 13 3/8" and 8 5/8" casing. Test all significant shows & evaluate /adequate logging program. Abandonment will be performed in accordance w/prudent practices and regulatory requirements. A double ram series 900 BOP and choke manifold will be used from the 8 5/8" casing point to total depth. Production casing will be 5 1/2" and will be run at total depth. Completion will be from perforations in the 5 1/2" casing in the Wolfcamp Formation.

Permit Expires 1 Year From Approval
Date Unless Drilling Underway

²³ I hereby certify that the information given above is true and complete to the best of my knowledge and belief. I further certify that the drilling pit will be constructed according to NMOC guidelines <input checked="" type="checkbox"/> , a general permit <input type="checkbox"/> , or an (attached) alternative OCD-approved plan <input type="checkbox"/> .		OIL CONSERVATION DIVISION	
Printed name: J. W. Mulloy		Approved by:	
Title: Agent		Title: PETROLEUM ENGINEER	
E-mail Address: jwmulloy@jwmulloyassoc.com		Approval Date: OCT 07 2005 Expiration Date:	
Date: 9-20-05	Phone: 432-687-0323		

Conditions of Approval : Approved to drill
but CANNOT PRODUCE until Non-Standard
Location is approved in Santa Fe.

DISTRICT I
1625 N. French Dr., Hobbs, NM 88240

State of New Mexico
Energy, Minerals & Natural Resources Department

Form C-102
Revised August 15, 2000
Submit to Appropriate District Office
State Lease - 4 Copies
Fee Lease - 3 Copies

DISTRICT II
P.O. Drawer DD, Artesia, NM 88211-0719

OIL CONSERVATION DIVISION
2040 South Pacheco
Santa Fe, NM 87505

DISTRICT III
1000 Rio Brazos Rd., Aztec, NM 87410

DISTRICT IV
2040 South Pacheco, Santa Fe, NM 87505

☐ AMENDED REPORT

WELL LOCATION AND ACREAGE DEDICATION PLAT

API Number 30-025-37487	Pool Code 59890	Pool Name TRINITY (WOLF CAMP)
Property Code 35121	Property Name PRESLEY 34	Well Number 1
OGRID No. 228971	Operator Name MATRIX NM OPERATING COMPANY, LLC	Elevation 3799'

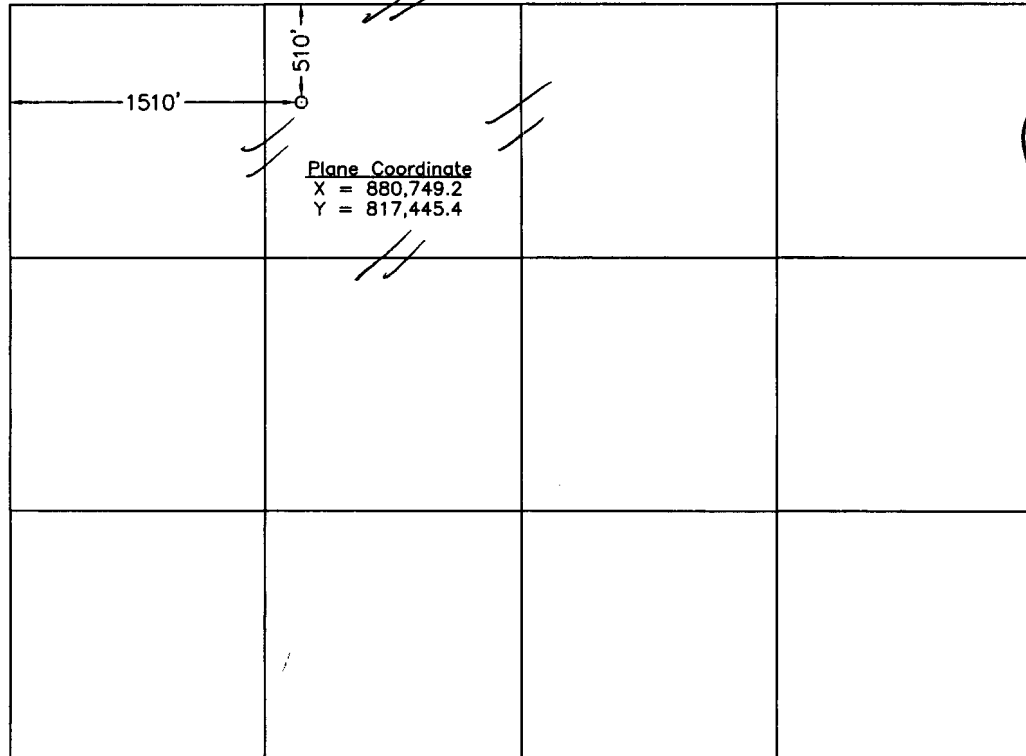
Surface Location

UL or lot No. C	Section 34	Township 12 S	Range 38 E	Lot Idn	Feet from the 510	North/South line NORTH	Feet from the 1510	East/West line WEST	County LEA
---------------------------	----------------------	-------------------------	----------------------	---------	-----------------------------	----------------------------------	------------------------------	-------------------------------	----------------------

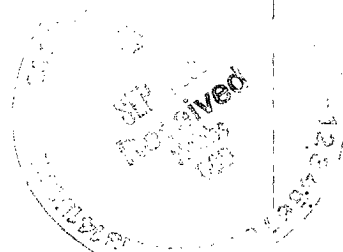
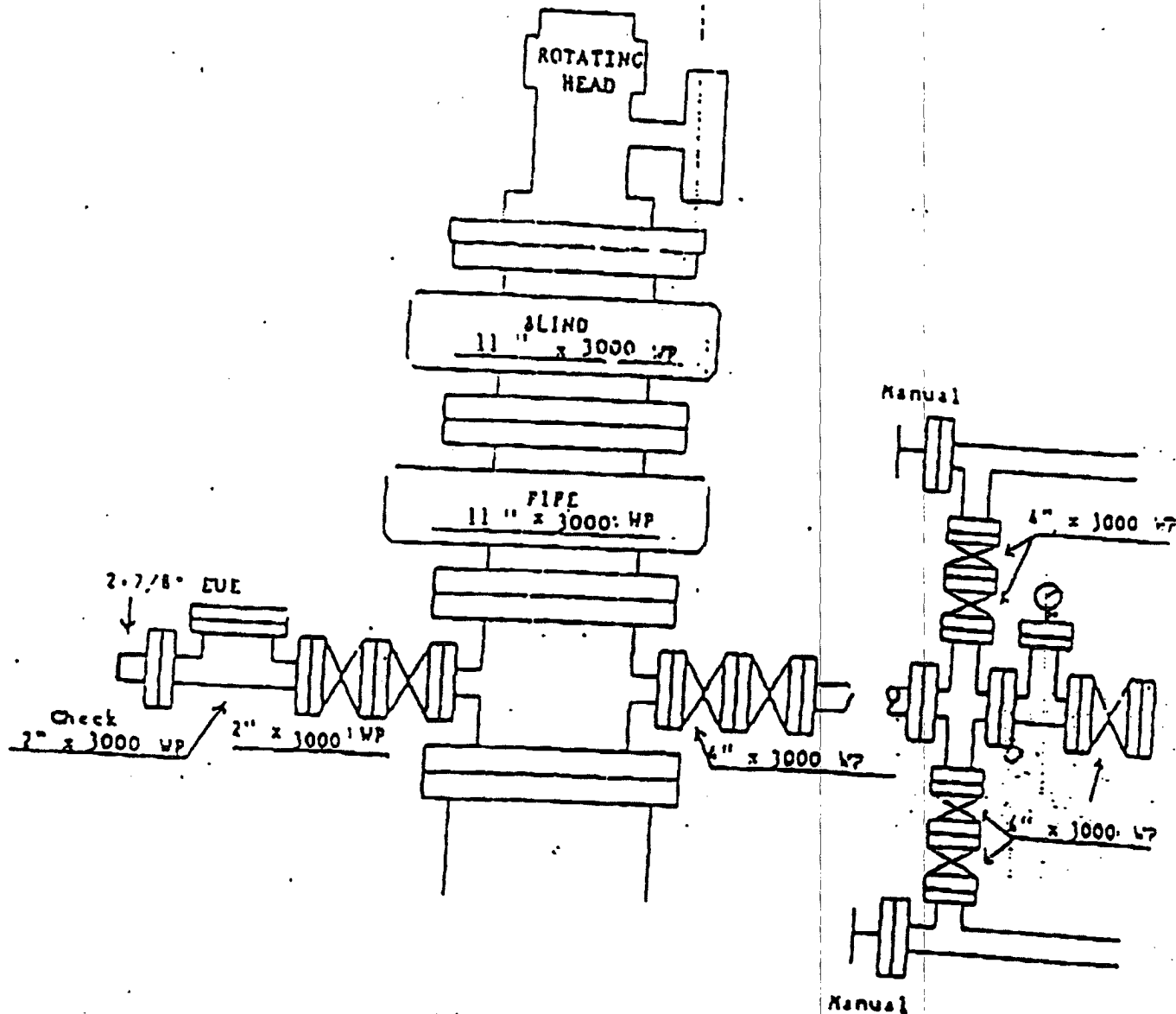
Bottom Hole Location If Different From Surface

UL or lot No.	Section	Township	Range	Lot Idn	Feet from the	North/South line	Feet from the	East/West line	County
Dedicated Acres 40	Joint or Infill	Consolidation Code	Order No.						

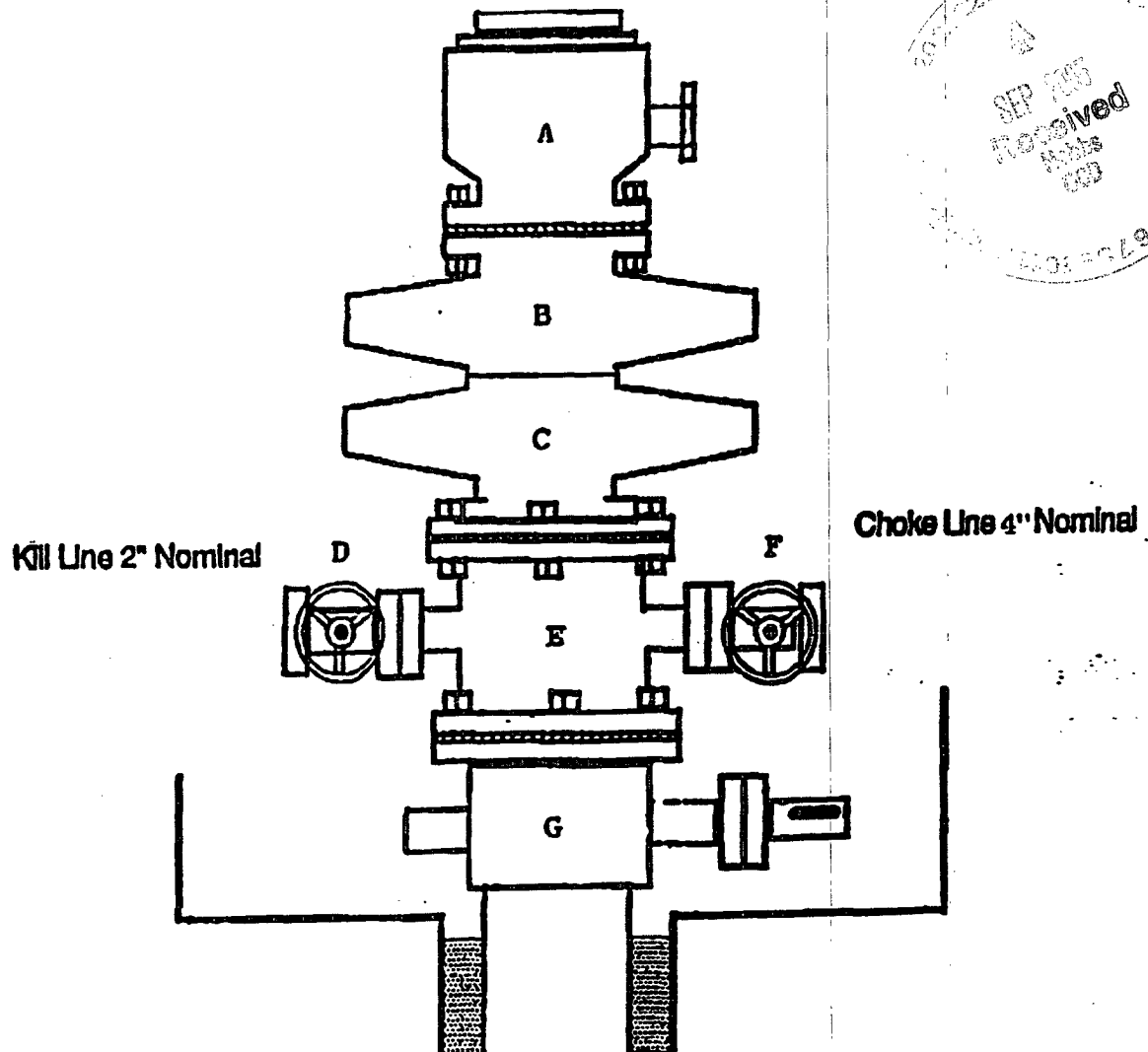
NO ALLOWABLE WILL BE ASSIGNED TO THIS COMPLETION UNTIL ALL INTERESTS HAVE BEEN CONSOLIDATED OR A NON-STANDARD UNIT HAS BEEN APPROVED BY THE DIVISION

	<p>OPERATOR CERTIFICATION</p> <p>I hereby certify the the information contained herein is true and complete to the best of my knowledge and belief.</p> <p><i>[Signature]</i> Signature J.W. Mulloy Printed Name AGENT Title 9/21/05 Date</p>
<p>NOTE:</p> <p>1) Plane Coordinates shown hereon are Transverse Mercator and Conform to the "New Mexico Coordinate System", New Mexico East Zone North American Datum of 1927. Distances shown hereon are mean horizontal surface values.</p>	<p>SURVEYOR CERTIFICATION</p> <p>I hereby certify that the well location shown on this plat was plotted from field notes of actual surveys made by me or under my supervision and that the same is true and correct to the best of my belief.</p> <p>September 8, 2005 Date Surveyed Signature & Seal of Professional Surveyor <i>[Signature]</i> 12185 W.O. Num. 2005-0907 Certificate No. MACON McDONALD 12185</p>

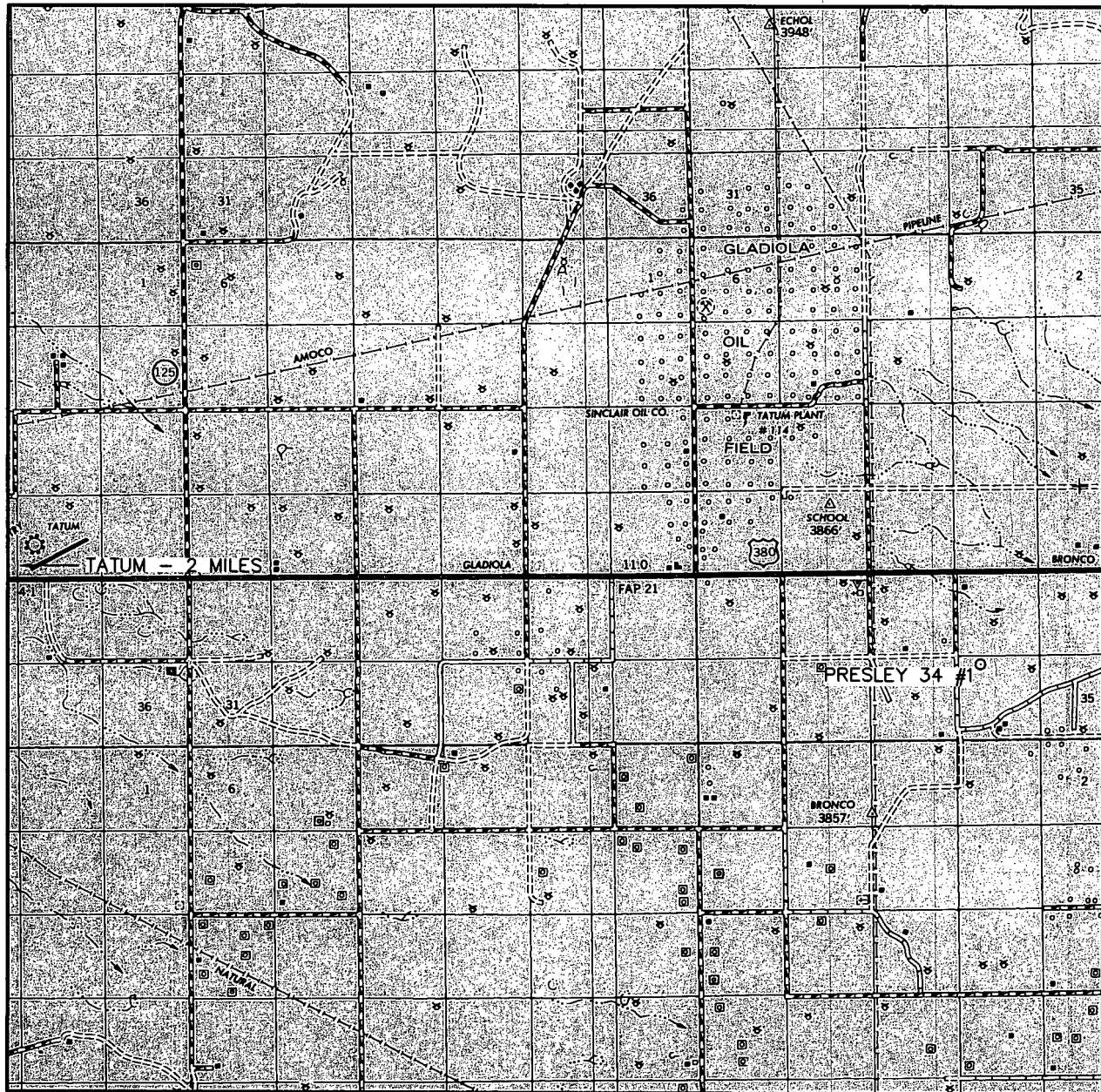
ATTACHMENT "A"



- A — Rotating Head
- B — Pipe Rams
- C — Blind Rams
- D — 2" Kill Line
- E — Adapter Spool
- F — 4" Choke Line
- G — Casing Head



VICINITY MAP



SCALE: 1" = 2 MILES

SEC. 34 TWP. 12-S RGE. 38-E

SURVEY N.M.P.M.

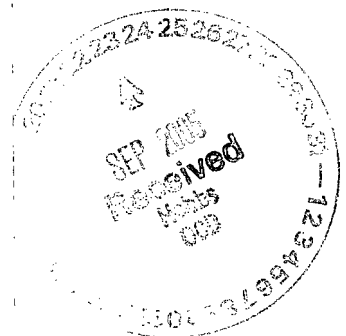
COUNTY LEA

DESCRIPTION 510' FNL & 1510' FWL

ELEVATION 3799'

OPERATOR MATRIX NM OPERATING COMPANY, LLC

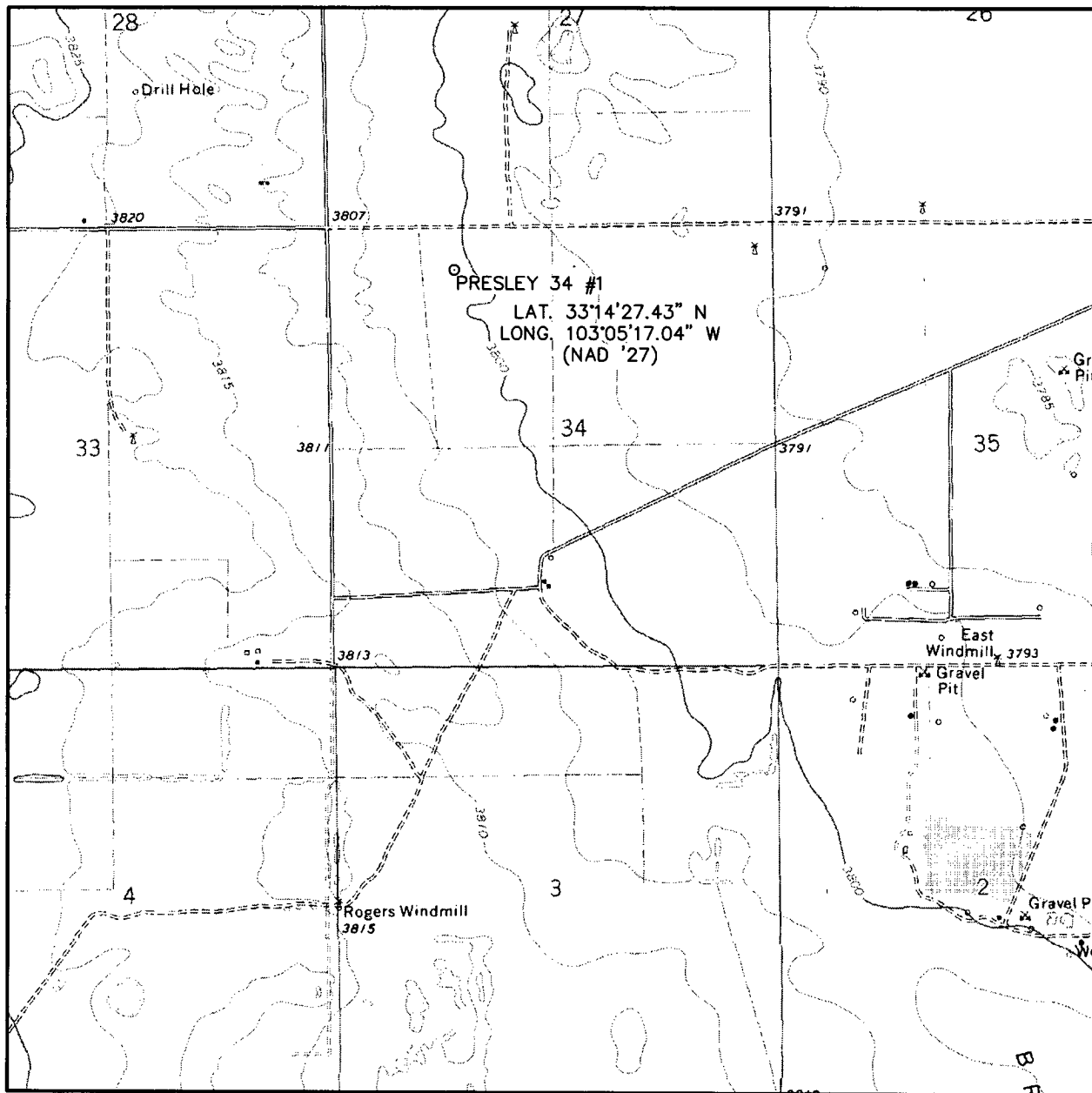
LEASE PRESLEY 34



**WEST
COMPANY**
of Midland, Inc.

110 W. LOUISIANA, STE. 110
MIDLAND TEXAS, 79701
(432) 687-0865 - (432) 687-0868 FAX

LOCATION VERIFICATION MAP



SCALE: 1" = 2000'

CONTOUR INTERVAL:
PRARIEVIEW NE- 5'

SEC. 34 TWP. 12-S RGE. 38-E

SURVEY N.M.P.M.

COUNTY LEA

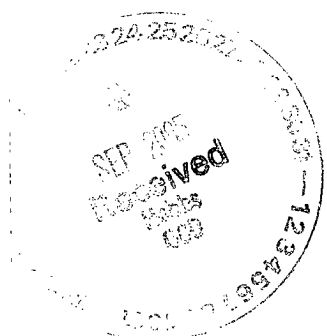
DESCRIPTION 510' FNL & 1510' FWL

ELEVATION 3799'

OPERATOR MATRIX NM OPERATING COMPANY, LLC

LEASE PRESLEY 34

U.S.G.S. TOPOGRAPHIC MAP
PRARIEVIEW NE, N.M.



110 W. LOUISIANA, STE. 110
MIDLAND TEXAS, 79701
(432) 687-0865 - (432) 687-0868 FAX