

District I  
1625 N. French Dr., Hobbs, NM 88240  
District II  
1301 W. Grand Avenue, Artesia, NM 88210  
District III  
1000 Rio Brazos Road, Aztec, NM 87410  
District IV  
1220 S. St. Francis Dr., Santa Fe, NM 87505

State of New Mexico  
Energy Minerals and Natural Resources

Oil Conservation Division  
1220 South St. Francis Dr.  
Santa Fe, NM 87505

Form C-144  
July 29, 2004

For drilling and production facilities, submit to appropriate NMOCD District Office.  
For downstream facilities, submit to Santa Fe office

**Pit or Below-Grade Tank Registration or Closure**

Is pit or below-grade tank covered by a "general plan"? Yes ☒ No ☐

Type of action: Registration of a pit or below-grade tank ☒ Closure of a pit or below-grade tank ☒

Operator: Apache Corporation Telephone: (918) 491-4800 e-mail address: glenn.bone@apachecorp.com  
Address: Two Warren Place, Suite 1500, 6120 S. Yale, Tulsa Oklahoma 74136-4224  
Facility or well name: State 15 # 13 API #: 30-025-37482 O/L or Qtr/Qtr O Sec 16 T 21S R 37E  
County: Lea Latitude 32°28'21.00"N Longitude 103°09'57.93"W NAD: 1927 ☒ 1983 ☐ Surface Owner Federal ☐ State ☒ Private ☐ Indian ☐

<b>Pit</b> Type: Drilling <input checked="" type="checkbox"/> Production <input type="checkbox"/> Disposal <input type="checkbox"/> Workover <input type="checkbox"/> Emergency <input type="checkbox"/> Lined <input checked="" type="checkbox"/> Unlined <input type="checkbox"/> Liner type: Synthetic <input checked="" type="checkbox"/> Thickness <u>12</u> mil Clay <input type="checkbox"/> Volume <u>7105</u> bbl	<b>Below-grade tank</b> Volume: _____ bbl Type of fluid: _____ Construction material: _____ Double-walled, with leak detection? Yes <input type="checkbox"/> If not, explain why not. _____	
Depth to ground water (vertical distance from bottom of pit to seasonal high water elevation of ground water.)	Less than 50 feet	(20 points)
	50 feet or more, but less than 100 feet -80 ft	(10 points) 10 Pts
	100 feet or more	( 0 points)
Wellhead protection area: (Less than 200 feet from a private domestic water source, or less than 1000 feet from all other water sources.)	Yes	(20 points)
	No	( 0 points)
Distance to surface water: (horizontal distance to all wetlands, playas, irrigation canals, ditches, and perennial and ephemeral watercourses.)	Less than 200 feet	(20 points)
	200 feet or more, but less than 1000 feet	(10 points)
	1000 feet or more	( 0 points)
<b>Ranking Score (Total Points)</b>		<b>10 Points</b>

**If this is a pit closure:** (1) attach a diagram of the facility showing the pit's relationship to other equipment and tanks. (2) Indicate disposal location: onsite ☒ offsite ☐ If offsite, name of facility \_\_\_\_\_. (3) Attach a general description of remedial action taken including remediation start date and end date. (4) Groundwater encountered: No ☐ Yes ☐ If yes, show depth below ground surface \_\_\_\_\_ ft. and attach sample results. (5) Attach soil sample results and a diagram of sample locations and excavations.

I hereby certify that the information above is true and complete to the best of my knowledge and belief. I further certify that the above-described pit or below-grade tank has been/will be constructed or closed according to NMOCD guidelines ☒, a general permit ☐, or an (attached) alternative OCD-approved plan ☐.

Printed Name/Title Glenn Bone - Drilling Engineer Signature \_\_\_\_\_

Our certification and NMOCD approval of this application/closure does not relieve the operator of liability should the contents of the pit or tank contaminate ground water or otherwise endanger public health or the environment. Nor does it relieve the operator of its responsibility for compliance with any other federal, state, or local laws and/or regulations.

Approval:

Date:

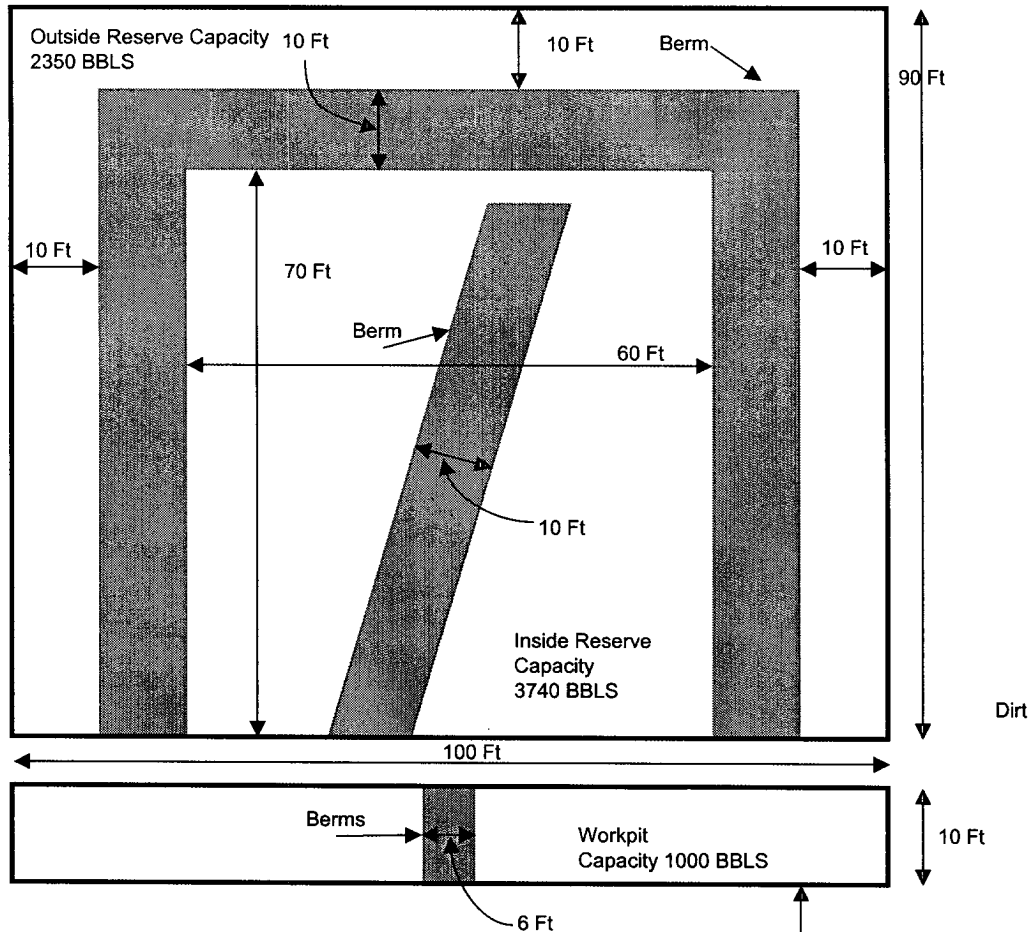
Printed Name/Title OCT 11 2005 PETROLEUM ENGINEER Signature \_\_\_\_\_

**Apache Corporation  
Drilling Reserve Pit Closure  
General Plan**

Lea County, NM



Top Soil pushed back off of Reserve pit prior to digging pits



Outside Dimension of reserve Pit is 100 Ft x 90 Ft

Elevation of Pit Sides - 2 Ft Above Ground Level  
Pits are dug 4 Ft below ground  
Pit walls are sloped on a 3 to 1 ratio  
Pit liner to be 12 mil approved plastic

Closure Procedure:

Pits will be de-watered as soon as practical.

After allowing sufficient time for the drilling cuttings to dry  
the pit liner will be folded in to cover the pits

This will be covered with not less than 12" of clean soil

A 20 mil approved plastic liner will be placed over the pits as a cap

Pit covered with not less than 36" of clean soil

Reseeded with BLM or NMOCD approved mixture of grass seed

DISTRICT I  
1025 N. FRENCH DR., HOBBS, NM 88240

DISTRICT II  
1301 W. GRAND AVENUE, ARTESIA, NM 88210

DISTRICT III  
1000 Rio Brazos Rd., Aztec, NM 87410

DISTRICT IV  
1220 S. ST. FRANCIS DR., SANTA FE, NM 87505

State of New Mexico  
Energy, Minerals and Natural Resources Department

OIL CONSERVATION DIVISION  
1220 SOUTH ST. FRANCIS DR.  
Santa Fe, New Mexico 87505

Form C-102  
Revised JUNE 10, 2003  
Submit to Appropriate District Office  
State Lease - 4 Copies  
Fee Lease - 3 Copies

WELL LOCATION AND ACREAGE DEDICATION PLAT

☐ AMENDED REPORT

API Number	Pool Code	Pool Name
Property Code	Property Name STATE LAND 15	Well Number 13
OGRID No.	Operator Name APACHE CORPORATION	Elevation 3443'

Surface Location

UL or lot No.	Section	Township	Range	Lot Idn	Feet from the	North/South line	Feet from the	East/West line	County
0	16	21-S	37-E		350	SOUTH	2200	EAST	LEA

Bottom Hole Location If Different From Surface

UL or lot No.	Section	Township	Range	Lot Idn	Feet from the	North/South line	Feet from the	East/West line	County
Dedicated Acres	Joint or Infill	Consolidation Code	Order No.						

NO ALLOWABLE WILL BE ASSIGNED TO THIS COMPLETION UNTIL ALL INTERESTS HAVE BEEN CONSOLIDATED  
OR A NON-STANDARD UNIT HAS BEEN APPROVED BY THE DIVISION

	<p><b>OPERATOR CERTIFICATION</b></p> <p>I hereby certify the the information contained herein is true and complete to the best of my knowledge and belief.</p> <p><i>Lana Williams</i> Signature</p> <p>Lana Williams Printed Name</p> <p>Sr. Dept. Title</p> <p>_____ Date</p>
	<p><b>SURVEYOR CERTIFICATION</b></p> <p>I hereby certify that the well location shown on this plat was plotted from field notes of actual surveys made by me or under my supervision, and that the same is true and correct to the best of my belief.</p> <p>SEPTEMBER 15, 2005</p> <p>Date Surveyed _____</p> <p>Signature _____</p> <p>Professional Surveyor</p> <p>NEW MEXICO</p> <p>05.11.14</p> <p>Certificate No. CARY EUGEN 12641</p>

DISTRICT I  
1825 N. FRENCH DR., HOBBS, NM 88240

DISTRICT II  
1301 W. GRAND AVENUE, ARTESIA, NM 88210

DISTRICT III  
1000 Rio Brazos Rd., Aztec, NM 87410

DISTRICT IV  
1220 S. ST. FRANCIS DR., SANTA FE, NM 87503

State of New Mexico  
Energy, Minerals and Natural Resources Department

OIL CONSERVATION DIVISION  
1220 SOUTH ST. FRANCIS DR.  
Santa Fe, New Mexico 87505

Form C-102  
Revised JUNE 10, 2003  
Submit to Appropriate District Office  
State Lease - 4 Copies  
Fee Lease - 3 Copies

WELL LOCATION AND ACREAGE DEDICATION PLAT

☐ AMENDED REPORT

API Number	Pool Code	Pool Name
Property Code	Property Name STATE LAND 15	Well Number 13
OGRID No.	Operator Name APACHE CORPORATION	Elevation 3443'

Surface Location

UL or lot No.	Section	Township	Range	Lot Idn	Feet from the	North/South line	Feet from the	East/West line	County
0	16	21-S	37-E		350	SOUTH	2200	EAST	LEA

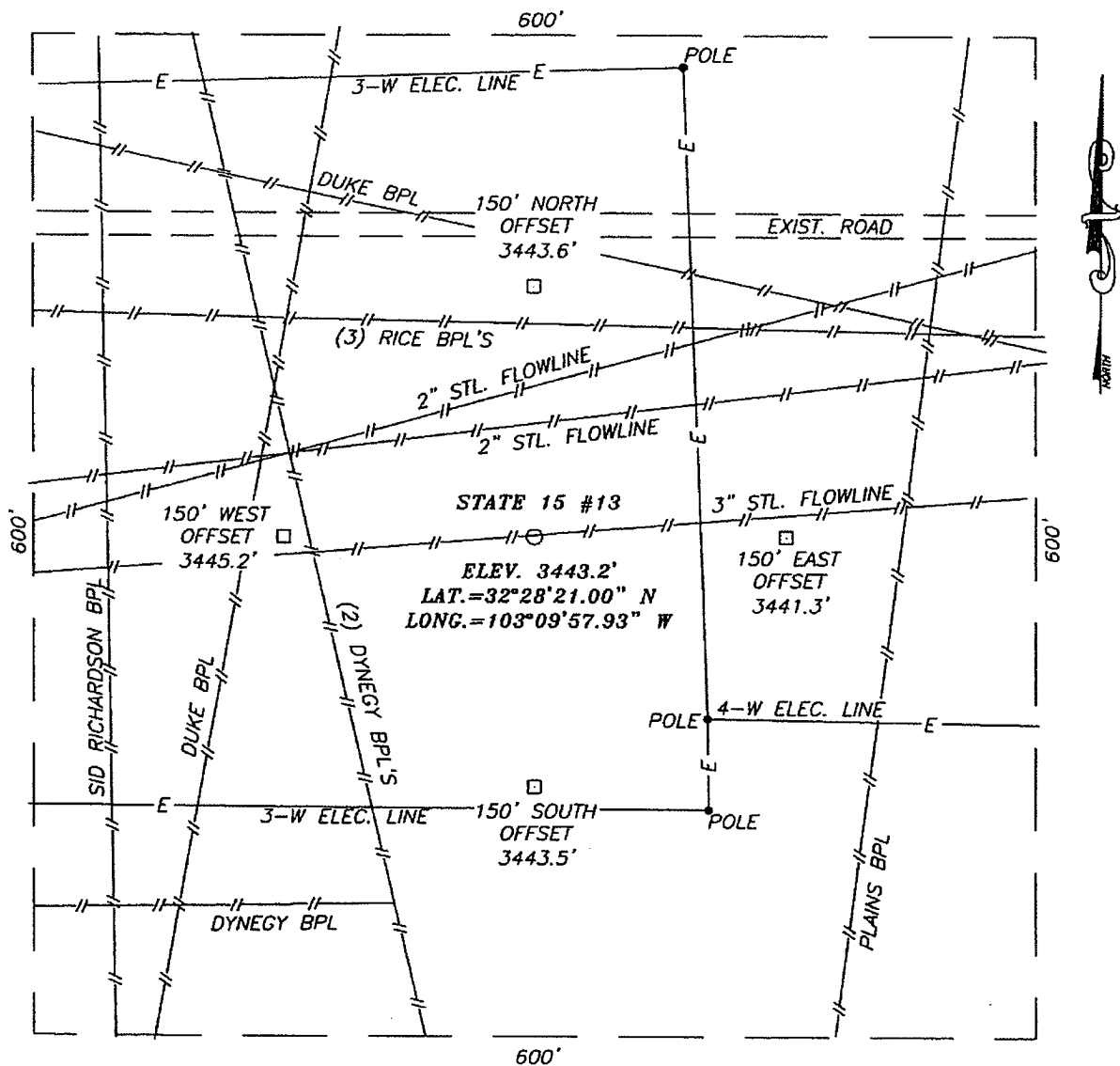
Bottom Hole Location If Different From Surface

UL or lot No.	Section	Township	Range	Lot Idn	Feet from the	North/South line	Feet from the	East/West line	County
Dedicated Acres	Joint or Infill	Consolidation Code	Order No.						

NO ALLOWABLE WILL BE ASSIGNED TO THIS COMPLETION UNTIL ALL INTERESTS HAVE BEEN CONSOLIDATED  
OR A NON-STANDARD UNIT HAS BEEN APPROVED BY THE DIVISION

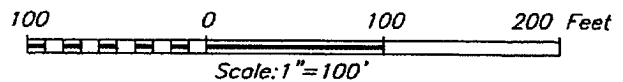
		<b>OPERATOR CERTIFICATION</b>  <i>I hereby certify the the information contained herein is true and complete to the best of my knowledge and belief.</i>  Signature _____  Printed Name _____  Title _____  Date _____	
		<b>SURVEYOR CERTIFICATION</b>  <i>I hereby certify that the well location shown on this plat was plotted from field notes of actual surveys made by me or under my supervision and that the same is true and correct to the best of my belief.</i>  SEPTEMBER 15, 2005  Date Surveyed _____ LA Signature & Seal of Professional Surveyor _____  05.11.1417  Certificate No. GARY EIDSON 12841	

**SECTION 16, TOWNSHIP 21 SOUTH, RANGE 37 EAST, N.M.P.M.,**  
LEA COUNTY, NEW MEXICO



**DIRECTIONS TO LOCATION**

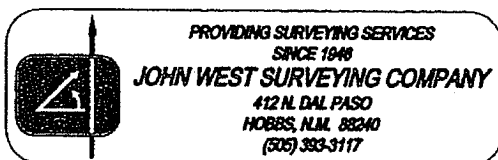
FROM THE INTERSECTION OF ST. HWY. #207 AND ST. HWY. #8 GO NORTH ON ST. HWY. #207 FOR APPROX. 2.0 MILES. TURN LEFT AND GO WEST APPROX. 0.4 MILES. THIS LOCATION IS APPROX. 175 FEET SOUTH OF ROAD.

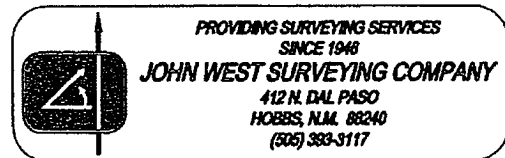


**APACHE CORPORATION**

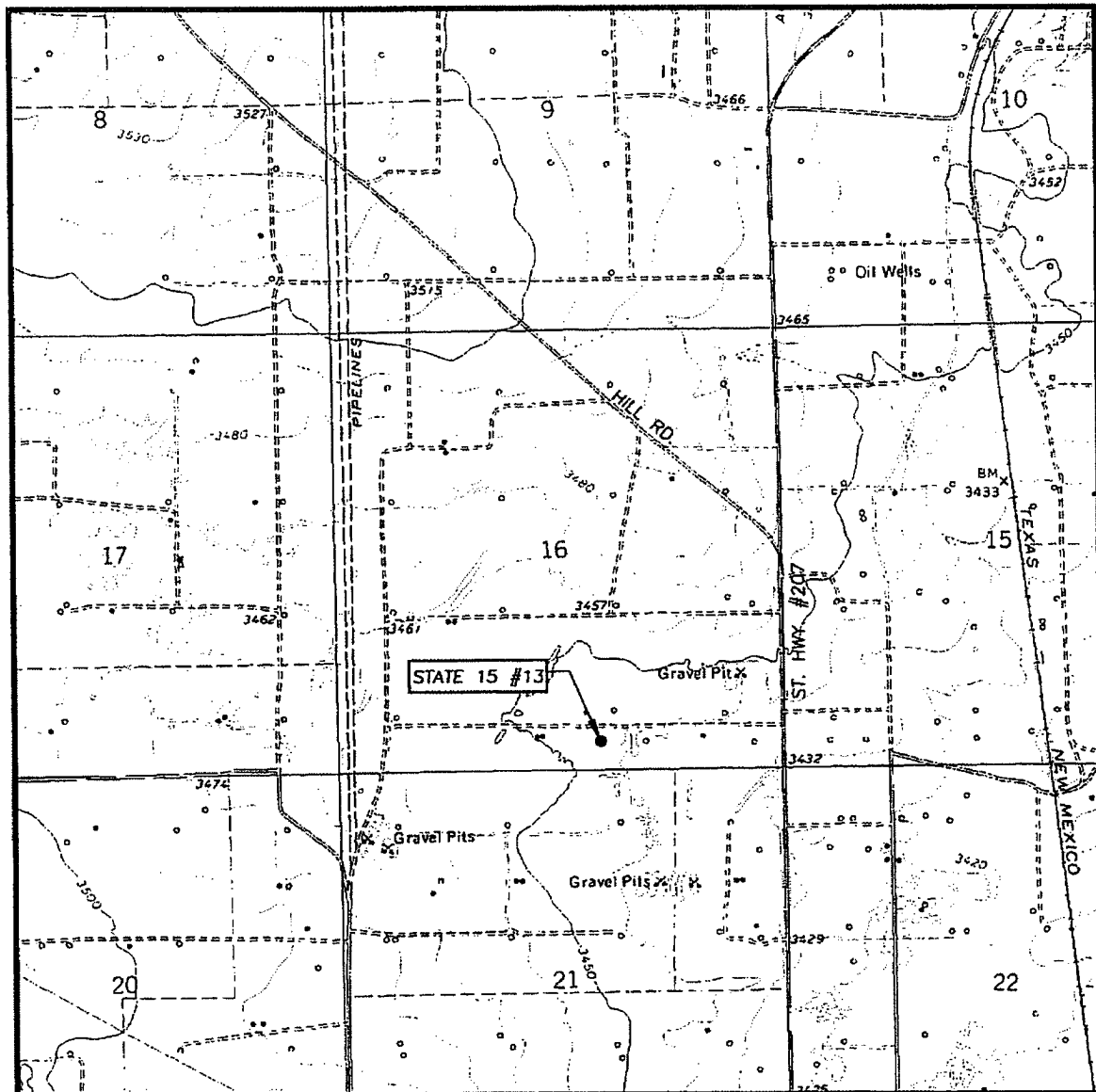
STATE 15 #13 WELL  
LOCATED 350 FEET FROM THE SOUTH LINE  
AND 2200 FEET FROM THE EAST LINE OF SECTION 16,  
TOWNSHIP 21 SOUTH, RANGE 37 EAST, N.M.P.M.,  
LEA COUNTY, NEW MEXICO.

Survey Date: 9/15/05	Sheet 1 of 1 Sheets
W.O. Number: 05.11.1417	Dr By: LA
Date: 9/23/05	Rev 1: N/A
Disk: CD#4	05111417
Scale: 1"=100'	





# LOCATION VERIFICATION MAP



SCALE: 1" = 2000'

CONTOUR INTERVAL:  
EUNICE, N.M. - 10'

SEC. 16 TWP. 21-S RGE. 37-E

SURVEY N.M.P.M.

COUNTY LEA

DESCRIPTION 350' FSL & 2200' FEL

ELEVATION 3443'

OPERATOR APACHE CORPORATION

LEASE STATE LAND 15

U.S.G.S. TOPOGRAPHIC MAP  
EUNICE, N.M.

