

JUL 02 2013

1220 S. St. Francis Dr., Santa Fe, NM 87505
Phone (505) 476-3460 Fax: (505) 476-3462

1220 South St. Francis Dr.
Santa Fe, New Mexico 87505

Submit one copy to appropriate
District Office

RECEIVED

WELL LOCATION AND ACREAGE DEDICATION PLAT

AMENDED REPORT

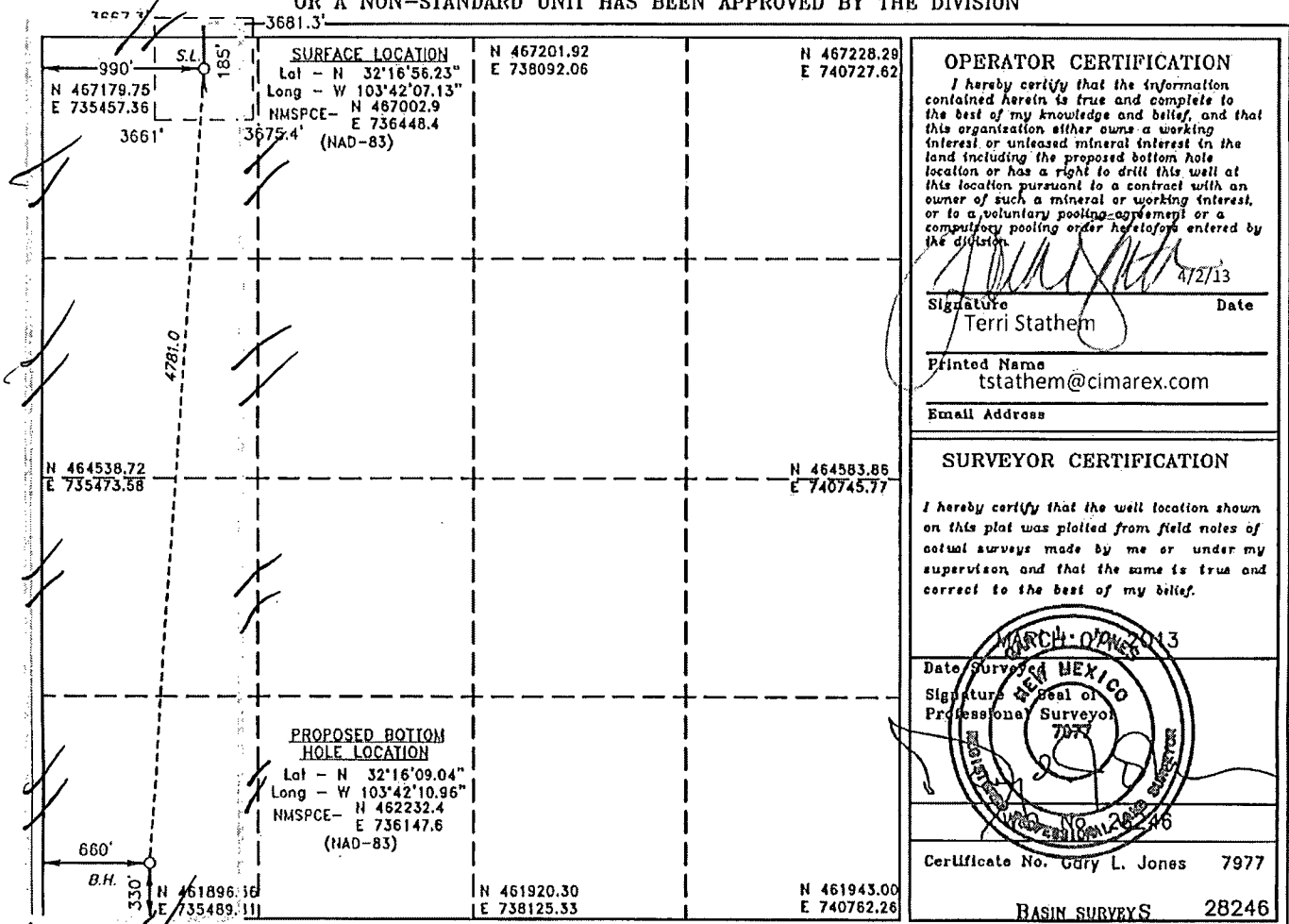
API Number 30025-41250	Pool Code 53805	Pool Name Sand Dunes Wildcat Bone Spring
Property Code 39990	Property Name JAMES FEDERAL	Well Number 19H
OGRID No. 215099	Operator Name CIMAREX ENERGY CO. I	Elevation 3674

UL or lot No.	Section	Township	Range	Lot Idn	Feet from the	North/South line	Feet from the	East/West line	County
D	29	23 S	32 E		185	NORTH	990	WEST	LEA

UL or lot No.	Section	Township	Range	Lot Idn	Feet from the	North/South line	Feet from the	East/West line	County
M	29	23 S	32 E		330	SOUTH	660	WEST	LEA

Dedicated Acres 160	Joint or Infill	Consolidation Code	Order No.
------------------------	-----------------	--------------------	-----------

NO ALLOWABLE WILL BE ASSIGNED TO THIS COMPLETION UNTIL ALL INTERESTS HAVE BEEN CONSOLIDATED
OR A NON-STANDARD UNIT HAS BEEN APPROVED BY THE DIVISION



ELG 7-3-2013

JUL 09 2013

dm