

District I  
1625 N. French Dr., Hobbs, NM 88240  
Phone: (575) 393-6161 Fax: (575) 393-0720  
District II  
811 S. First St., Artesia, NM 88210  
Phone: (575) 748-1283 Fax: (575) 748-9720  
District III  
1000 Rio Brazos Road, Aztec, NM 87410  
Phone: (505) 334-6178 Fax: (505) 334-6170  
District IV  
1220 S. St. Francis Dr., Santa Fe, NM 87505  
Phone: (505) 476-3460 Fax: (505) 476-3462

State of New Mexico  
Energy, Minerals & Natural Resources Department  
OIL CONSERVATION DIVISION  
1220 South St. Francis Dr.  
Santa Fe, NM 87505

Form C-102  
Revised August 1, 2011  
Submit one copy to appropriate  
District Office

HOESS OGD

JUL 0 2013 AM ENDED REPORT

WELL LOCATION AND ACREAGE DEDICATION PLAT RECEIVED

<sup>1</sup> API Number <b>30-025-41252</b>		<sup>2</sup> Pool Code 59900	<sup>3</sup> Pool Name TRIPLE X; BONE SPRING
<sup>4</sup> Property Code 30884	<sup>5</sup> Property Name THISTLE UNIT		<sup>6</sup> Well Number 47H
<sup>7</sup> OGRID No. 6137	<sup>8</sup> Operator Name DEVON ENERGY PRODUCTION COMPANY, L.P.		<sup>9</sup> Elevation 3640.7

<sup>10</sup> Surface Location

UL or lot no.	Section	Township	Range	Lot Idn	Feet from the	North/South line	Feet from the	East/West line	County
N	34	23 S	33 E		280	SOUTH	2511	WEST	LEA

<sup>11</sup> Bottom Hole Location If Different From Surface

UL or lot no.	Section	Township	Range	Lot Idn	Feet from the	North/South line	Feet from the	East/West line	County
D	34	23 S	33 E		330	NORTH	660	WEST	LEA

<sup>12</sup> Dedicated Acres	<sup>13</sup> Joint or Infill	<sup>14</sup> Consolidation Code	<sup>15</sup> Order No.
200			

No allowable will be assigned to this completion until all interests have been consolidated or a non-standard unit has been approved by the division.

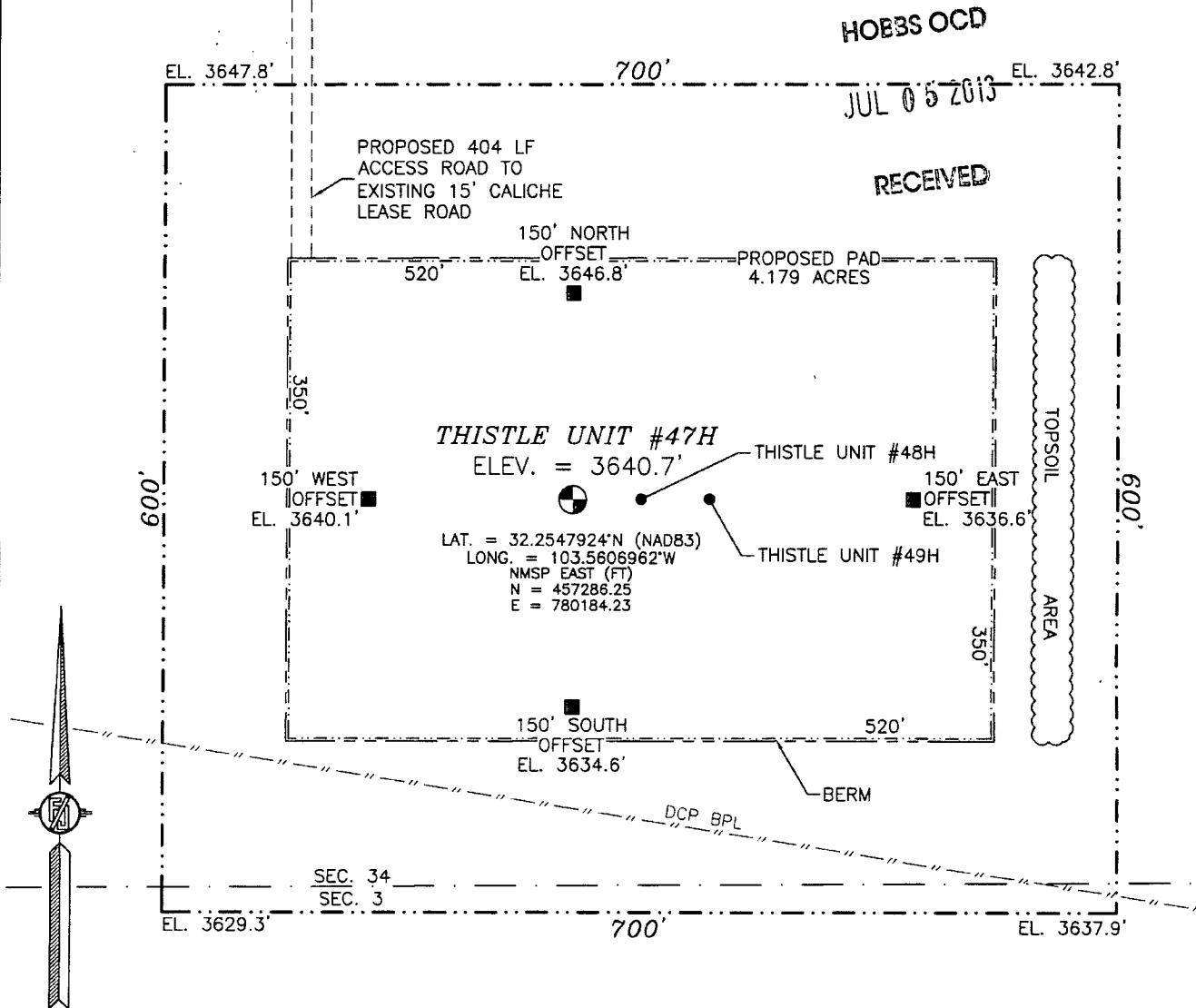
		<p><sup>17</sup> OPERATOR CERTIFICATION</p> <p>I hereby certify that the information contained herein is true and complete to the best of my knowledge and belief, and that this organization either owns a working interest or unleased mineral interest in the land including the proposed bottom hole location or has a right to drill this well at this location pursuant to a contract with an owner of such a mineral or working interest, or to a voluntary pooling agreement or a compulsory pooling order heretofore entered by the division.</p> <p><i>[Signature]</i> 7/3/2013 Signature Date David H. Cook Regulatory Specialist Printed Name david.cook@dvn.com E-mail Address</p>
<p>NOTE: LATITUDE AND LONGITUDE COORDINATES ARE SHOWN USING THE NORTH AMERICAN DATUM OF 1983 (NAD83). LISTED NEW MEXICO STATE PLANE EAST COORDINATES ARE GRID (NAD83). BASIS OF BEARING AND DISTANCES USED ARE NEW MEXICO STATE PLANE EAST COORDINATES MODIFIED TO THE SURFACE.</p> <p>THISTLE UNIT #47H ELEV. = 3640.7' LAT. = 32.2547924°N (NAD83) LONG. = 103.5606962°W NMSP EAST (FT) N = 457286.25 E = 780184.23</p>		<p><sup>18</sup> SURVEYOR CERTIFICATION</p> <p>I hereby certify that the well location shown on this plat was plotted from field notes of actual surveys made by me or under my supervision, and that the same is true and correct to the best of my belief.</p> <p>JUNE 7, 2013 Date of Survey NEW MEXICO 12797 Signature and Seal of Professional Surveyor Certificate Number: 12797 SURVEY NO. 1882</p>

JUL 11 2013

SECTION 34, TOWNSHIP 23 SOUTH, RANGE 33 EAST, N.M.P.M.  
LEA COUNTY, STATE OF NEW MEXICO

SITE MAP

NOTE: LATITUDE AND LONGITUDE COORDINATES ARE SHOWN USING THE NORTH AMERICAN DATUM OF 1983 (NAD83). LISTED NEW MEXICO STATE PLANE EAST COORDINATES ARE GRID (NAD83). BASIS OF BEARING AND DISTANCES USED ARE NEW MEXICO STATE PLANE EAST COORDINATES MODIFIED TO THE SURFACE



0 12 60 120 240

SCALE 1" = 120'

DIRECTIONS TO LOCATION

FROM THE INTERSECTION OF STATE HIGHWAY 128 AND CR J2 (BRINSTOOL) GO NORTHWEST ON CR J2 FOR APPROX. 3.2 MILES. GO EAST ON CALICHE LEASE ROAD FOR APPROX. 0.46 OF A MILE. GO NORTHEAST APPROX. 220', CONTINUE EAST APPROX. 0.1 OF A MILE. LOCATION IS APPROX. 575' SOUTH.

DEVON ENERGY PRODUCTION COMPANY, L.P.

THISTLE UNIT #47H

LOCATED 280 FT. FROM THE SOUTH LINE  
AND 2511 FT. FROM THE WEST LINE OF  
SECTION 34, TOWNSHIP 23 SOUTH,  
RANGE 33 EAST, N.M.P.M.  
LEA COUNTY, STATE OF NEW MEXICO

JUNE 7, 2013

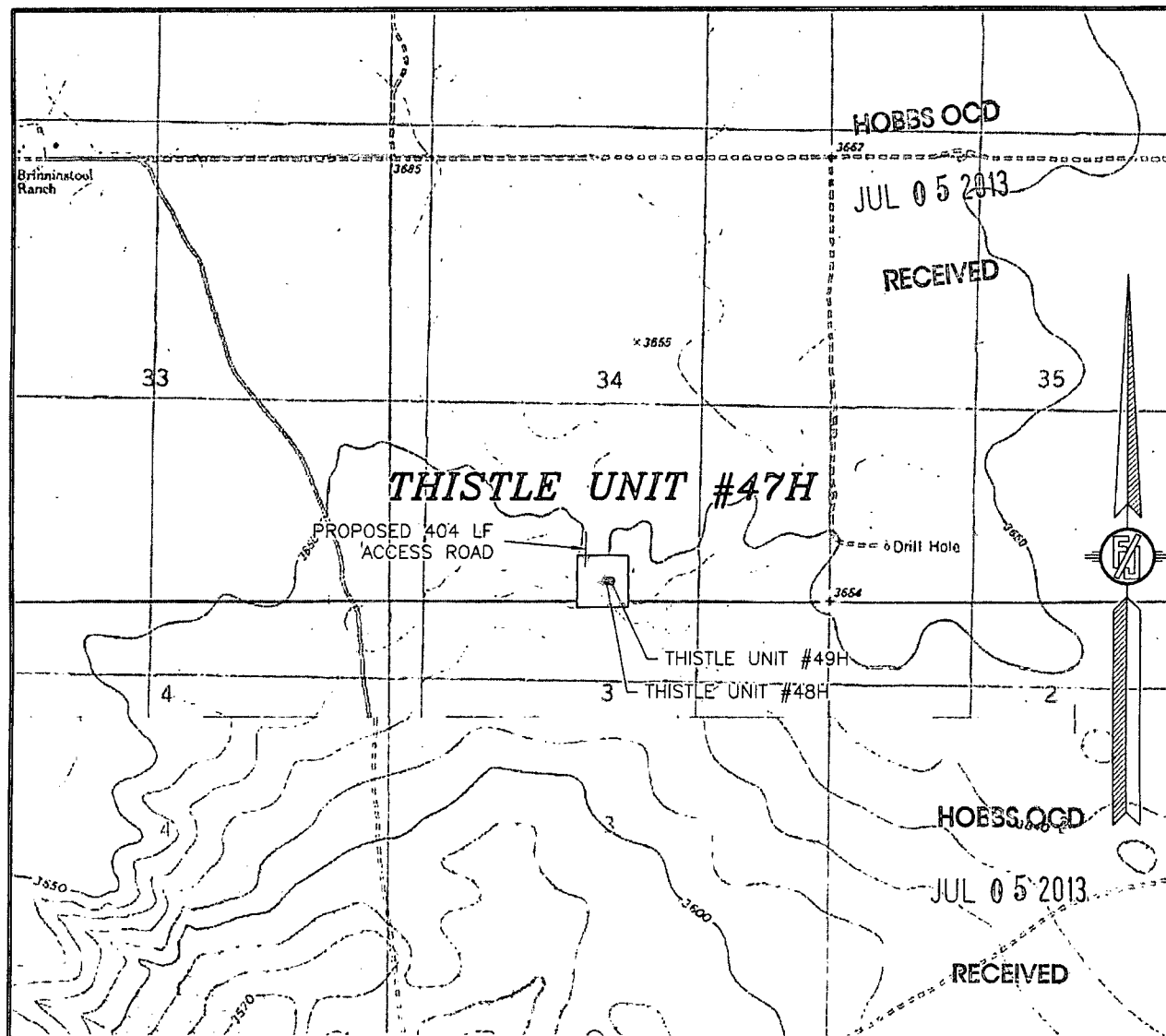
SURVEY NO. 1882

MADRON SURVEYING, INC.

301 SOUTH CANAL  
(575) 234-3341

CARLSBAD, NEW MEXICO

SECTION 34, TOWNSHIP 23 SOUTH, RANGE 33 EAST, N.M.P.M.  
LEA COUNTY, STATE OF NEW MEXICO  
LOCATION VERIFICATION MAP



USGS QUAD MAP:  
TIP TOP WELLS

NOT TO SCALE

DEVON ENERGY PRODUCTION COMPANY, L.P.

**THISTLE UNIT #47H**

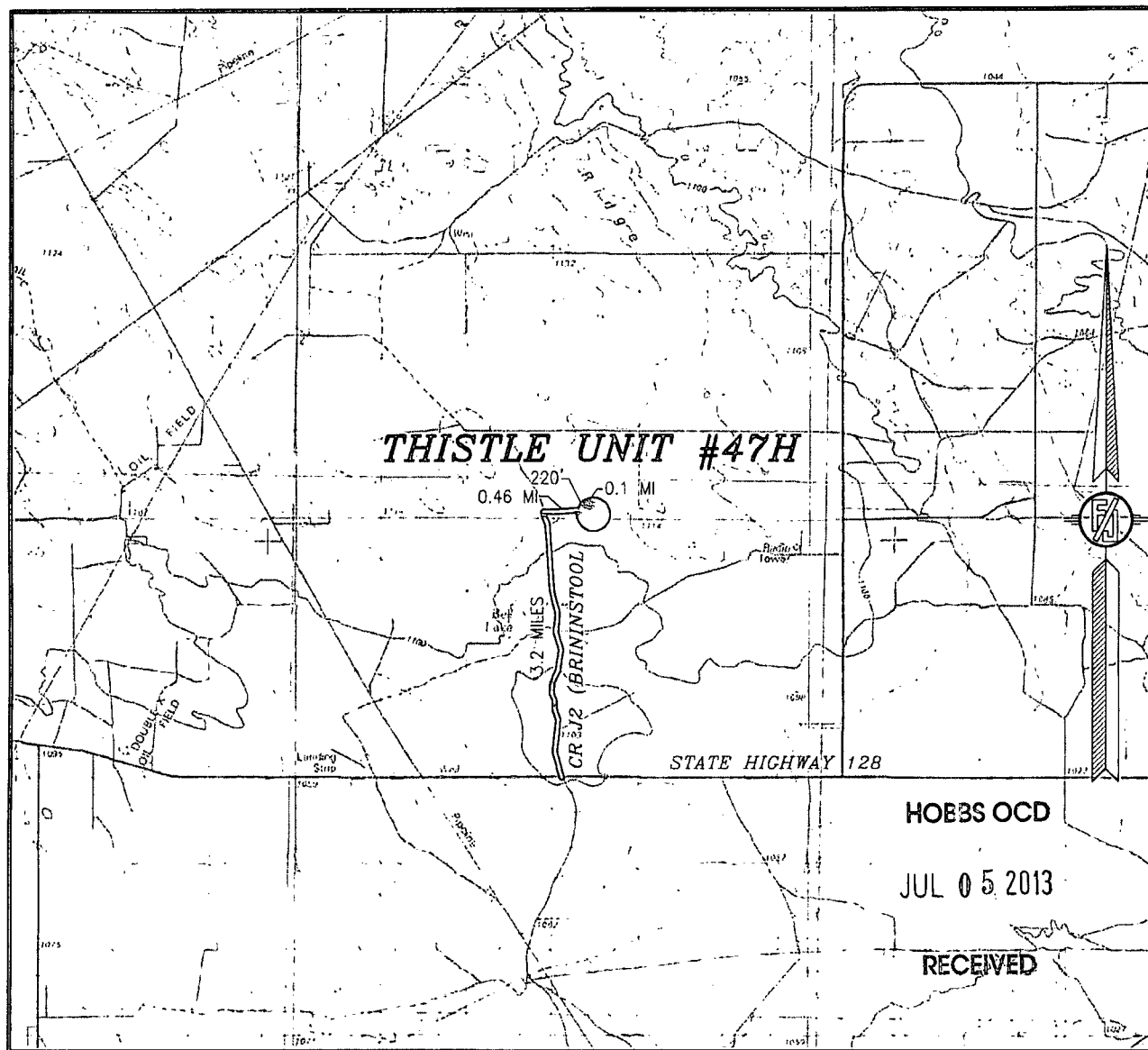
LOCATED 280 FT. FROM THE SOUTH LINE  
AND 2511 FT. FROM THE WEST LINE OF  
SECTION 34, TOWNSHIP 23 SOUTH,  
RANGE 33 EAST, N.M.P.M.  
LEA COUNTY, STATE OF NEW MEXICO

JUNE 7, 2013

SURVEY NO. 1882

MADRON SURVEYING, INC. 301 SOUTH CANAL (575) 234-3341 CARLSBAD, NEW MEXICO

SECTION 34, TOWNSHIP 23 SOUTH, RANGE 33 EAST, N.M.P.M.  
LEA COUNTY, STATE OF NEW MEXICO  
VICINITY MAP



HOBBS OCD

JUL 05 2013

RECEIVED

NOT TO SCALE

DEVON ENERGY PRODUCTION COMPANY, L.P.

**THISTLE UNIT #47H**

LOCATED 280 FT. FROM THE SOUTH LINE  
AND 2511 FT. FROM THE WEST LINE OF  
SECTION 34, TOWNSHIP 23 SOUTH,  
RANGE 33 EAST, N.M.P.M.  
LEA COUNTY, STATE OF NEW MEXICO

JUNE 7, 2013

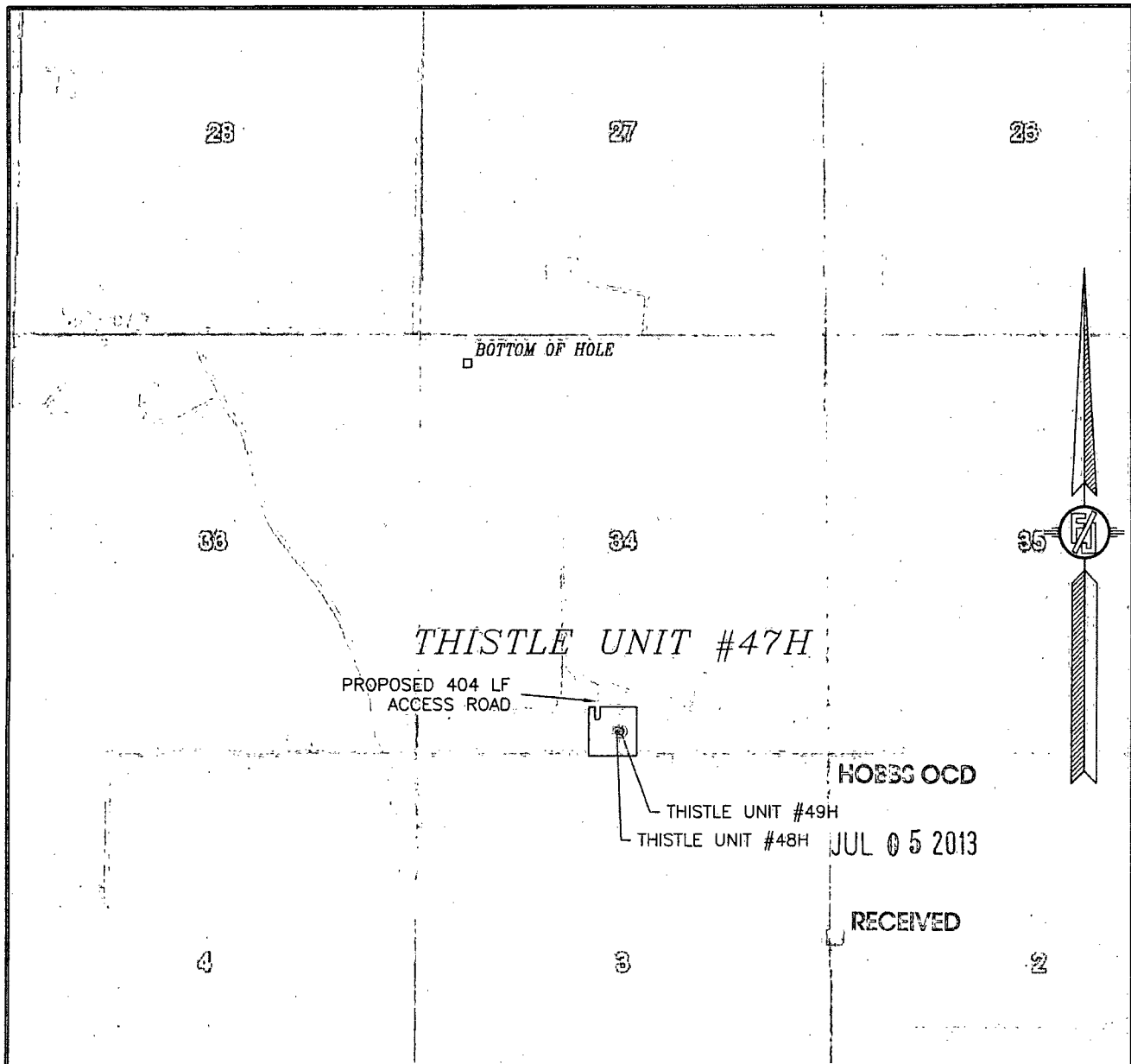
**DIRECTIONS TO LOCATION**

FROM THE INTERSECTION OF STATE HIGHWAY 128 AND CR J2  
(BRINSTOOL) GO NORTHWEST ON CR J2 FOR APPROX. 3.2 MILES.  
GO EAST ON CALICHE LEASE ROAD FOR APPROX. 0.46 OF A MILE. GO  
NORTHEAST APPROX. 220', CONTINUE EAST APPROX. 0.1 OF A MILE.  
LOCATION IS APPROX. 575' SOUTH.

MADRON SURVEYING, INC. 301 SOUTH CANAL  
(575) 234-3341

SURVEY NO. 1882  
CARLSBAD, NEW MEXICO

SECTION 34, TOWNSHIP 23 SOUTH, RANGE 33 EAST, N.M.P.M.  
LEA COUNTY, STATE OF NEW MEXICO  
**AERIAL PHOTO**



NOT TO SCALE  
AERIAL PHOTO:  
GOOGLE EARTH  
MARCH 2012

DEVON ENERGY PRODUCTION COMPANY, L.P.

**THISTLE UNIT #47H**

LOCATED 280 FT. FROM THE SOUTH LINE  
AND 2511 FT. FROM THE WEST LINE OF  
SECTION 34, TOWNSHIP 23 SOUTH,  
RANGE 33 EAST, N.M.P.M.  
LEA COUNTY, STATE OF NEW MEXICO

HOBBS OCD

JUL 05 2013

RECEIVED

JUNE 7, 2013

SURVEY NO. 1882

MADRON SURVEYING, INC. 301 SOUTH CANAL (575) 234-3341 CARLSBAD, NEW MEXICO