

District I
1625 N. French Dr., Hobbs, NM 88240
Phone: (575) 393-6161 Fax: (575) 393-0720
District II
811 S. First St., Artesia, NM 88210
Phone: (575) 748-1283 Fax: (575) 748-9720
District III
1000 Rio Brazos Road, Aztec, NM 87410
Phone: (505) 334-6178 Fax: (505) 334-6170
District IV
1220 S. St. Francis Dr., Santa Fe, NM 87505
Phone: (505) 476-3460 Fax: (505) 476-3462

RECEIVED

JUL 31 2013

HOBBS OCD

State of New Mexico
Energy, Minerals & Natural Resources Department
OIL CONSERVATION DIVISION
1220 South St. Francis Dr.
Santa Fe, NM 87505

Form C-102
Revised August 1, 2011
Submit one copy to appropriate
District Office

☐ AMENDED REPORT

WELL LOCATION AND ACREAGE DEDICATION PLAT

¹ API Number 30-025-41091		² Pool Code 24270		³ Pool Name FEATHERSTONE BONE SPRING EAST	
⁴ Property Code 39786		⁵ Property Name RANGER 12 STATE			⁶ Well Number 001
⁷ OGRID No. 228937		⁸ Operator Name MATADOR PRODUCTION COMPANY			⁹ Elevation 3662
¹⁰ Surface Location					
UL or lot no. M	Section 12	Township 20S	Range 35E	Lot Idn M	Feet from the 660
		North/South line S		Feet from the 660	East/West line W
				County LEA	
¹¹ Bottom Hole Location If Different From Surface					
UL or lot no. M	Section 12	Township 20S	Range 35E	Lot Idn M	Feet from the 660
		North/South line S		Feet from the 660	East/West line W
				County LEA	
¹² Dedicated Acres 320.40		¹³ Joint or Infill		¹⁴ Consolidation Code	
				¹⁵ Order No.	

No allowable will be assigned to this completion until all interests have been consolidated or a non-standard unit has been approved by the division.

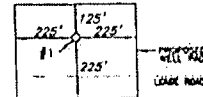
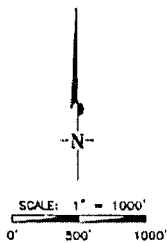
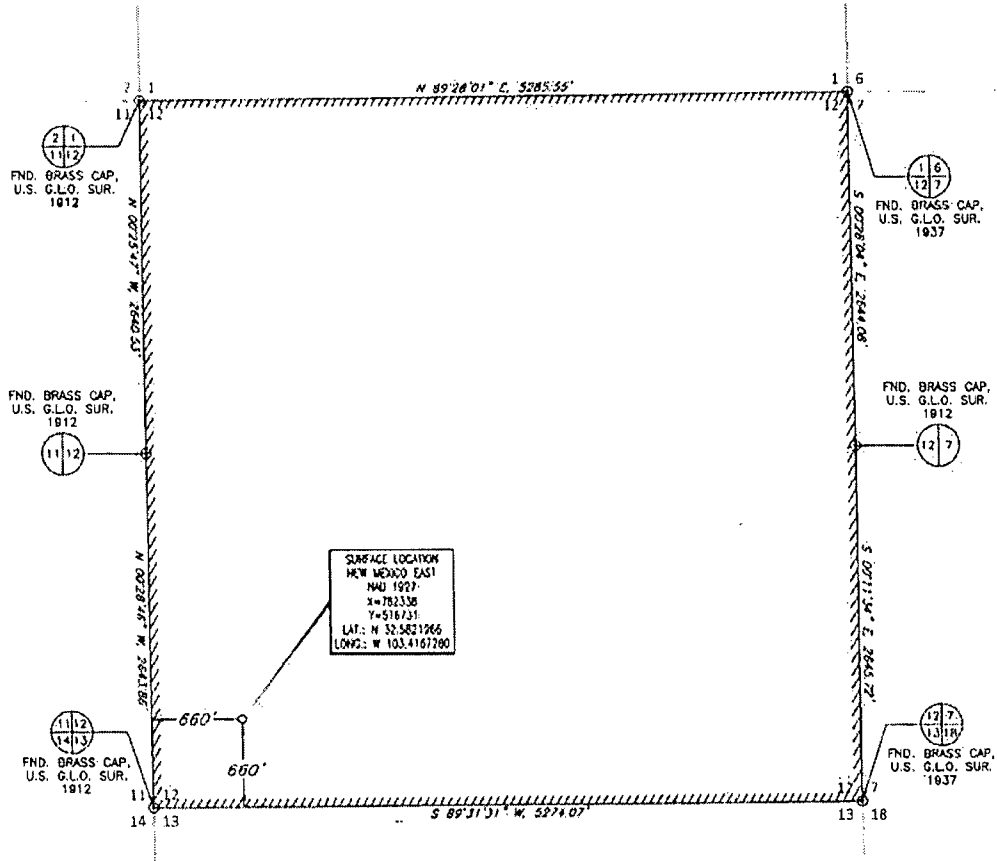
				¹⁷ OPERATOR CERTIFICATION I hereby certify that the information contained herein is true and complete to the best of my knowledge and belief, and that this organization either owns a working interest or unleased mineral interest in the land including the proposed bottom hole location or has a right to drill this well at this location pursuant to a contract with an owner of such a mineral or working interest, or to a voluntary pooling agreement or a compulsory pooling order heretofore entered by the division Signature <u>Aaron Byrd</u> Date <u>7/24/13</u> Printed Name <u>Aaron Byrd</u> E-mail Address <u>abyrd@matadorresources.com</u>	
				¹⁸ SURVEYOR CERTIFICATION I hereby certify that the well location shown on this plat was plotted from field notes of actual surveys made by me or under my supervision, and that the same is true and correct to the best of my belief. Date of Survey _____ Signature and Seal of Professional Surveyor _____ Certificate Number _____	

JUL 31 2013

I hereby certify that the information on this plat is true and complete to the best of my knowledge and belief. *Norm JH*



SECTION 12, TOWNSHIP 20 SOUTH, RANGE 35 EAST, N.M.P.M.
LEA COUNTY, NEW MEXICO



DETAIL VIEW
SCALE: 1" = 500'

SECTION LINE

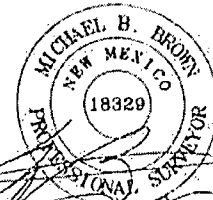
LEASE NAME & WELL NO.: MATADOR RANGER 12 STATE #1

SECTION 12 TWP 20-S RGE 35-E SURVEY N.M.P.M.
COUNTY LEA STATE NM
DESCRIPTION 660' FSL & 660' FWL

DISTANCE & DIRECTION FROM INT. OF NM-176 W & NM-207
GO WEST ON NM-176 W ± 6.4 MILES, THENCE WEST (LEFT)
TO STAY ON NM-176 W ± 9.1 MILES, THENCE NORTH (RIGHT)
ON CR. 30/PEARSON LN. ± 1.0 MILE, THENCE NORTHEAST
(RIGHT) ON PEARSON RD. ± 0.2 MILES, THENCE NORTH (RIGHT)
ON LEASE RD. ± 1.7 MILES, THENCE WEST (LEFT) ON LEASE RD.
 ± 0.1 MILE TO A POINT ± 145 FEET SOUTH OF THE LOCATION.

ALL BEARINGS, DISTANCES, AND COORDINATE VALUES CONTAINED HEREON ARE
BASED UPON THE NEW MEXICO STATE PLANE COORDINATE SYSTEM, EAST
ZONE OF THE NORTH AMERICAN DATUM 1927, U.S. SURVEY FEET.
THIS EASEMENT/LEASE LOCATION SHOWN HEREON HAS BEEN SURVEYED ON THE
GROUND UNDER MY SUPERVISION AND PREPARED ACCORDING TO THE EVIDENCE FOUND AT
THE TIME OF SURVEY, AND DATA PROVIDED BY MATADOR PRODUCTION CO. THIS
CERTIFICATION IS MADE AND LIMITED TO THOSE PERSONS OR ENTITIES SHOWN ON THE
FACE OF THIS PLAT AND IS NON-TRANSFERABLE. THIS SURVEY IS CERTIFIED FOR THIS
TRANSACTION ONLY.

ORIGINAL DOCUMENT SIZE: 8.5" X 14"



Michael Blake Brown, P.S. No. 18329
MARCH 4, 2013

TOPOGRAPHIC

SURVEYING • MAPPING • GIS • GPS
2903 NORTH BIG SPRING • MIDLAND, TEXAS 79705
TELEPHONE: (432) 682-1553 • FAX (432) 682-1743
1400 EVERMAN PARKWAY, Ste. 107 • FT. WORTH, TEXAS 76140
TELEPHONE: (817) 744-7512 • FAX (817) 744-7548
2225 PERRYTON PARKWAY • PANAMA, TEXAS 79085
TELEPHONE: (806) 665-7218 • FAX (806) 665-7210
WWW.TOPOGRAPHIC.COM