

District I
1625 N. French Dr., Hobbs, NM 88240
Phone: (575) 393-6161 Fax: (575) 393-0720
District II
811 S. First St., Artesia, NM 88210
Phone: (575) 748-1283 Fax: (575) 748-9720
District III
1000 Rio Brazos Road, Aztec, NM 87410
Phone: (505) 334-6178 Fax: (505) 334-6170
District IV
1220 S. St. Francis Dr., Santa Fe, NM 87505
Phone: (505) 476-3460 Fax: (505) 476-3462

State of New Mexico
Energy, Minerals & Natural Resources Department
HOBBS OCD OIL CONSERVATION DIVISION
1220 South St. Francis Dr.
Santa Fe, NM 87505

Form C-102
Revised August 1, 2011
Submit one copy to appropriate
District Office
☐ AMENDED REPORT

JUL 29 2013

WELL LOCATION AND ACREAGE DEDICATION PLAT

¹ API Number 30-025-27051	² Pool Code 5130	³ Pool Name Bell Lake, Bone Spring
⁴ Property Code 29925	⁵ Property Name OK STRATOCASTER 20 FEDERAL	⁶ Well Number 4H
⁷ OGRID No. 270329	⁸ Operator Name ENDURANCE RESOURCES, LLC	⁹ Elevation 3496.6

¹⁰ Surface Location

UL or lot no.	Section	Township	Range	Lot Idn	Feet from the	North/South line	Feet from the	East/West line	County
I	20	23 S	34 E		1980	SOUTH	660	EAST	LEA

¹¹ Bottom Hole Location If Different From Surface

UL or lot no.	Section	Township	Range	Lot Idn	Feet from the	North/South line	Feet from the	East/West line	County
A	20	23 S	34 E		330	NORTH	660	EAST	LEA

¹² Dedicated Acres 120	¹³ Joint or Infill	¹⁴ Consolidation Code	¹⁵ Order No.
---	-------------------------------	----------------------------------	-------------------------

No allowable will be assigned to this completion until all interests have been consolidated or a non-standard unit has been approved by the division.

<p>N89°31'24"E 2641.41 FT</p> <p>NW CORNER SEC. 20 LAT. = 32.2973633°N LONG. = 103.5006501°W</p> <p>NMSP EAST (FT) N = 472912.33 E = 798626.73</p>		<p>N Q CORNER SEC. 20 LAT. = 32.2973670°N LONG. = 103.4921037°W</p> <p>NMSP EAST (FT) N = 472934.80 E = 801267.56</p>		<p>N89°31'12"E 2640.97 FT</p> <p>NE CORNER SEC. 20 LAT. = 32.2973706°N LONG. = 103.4835587°W</p> <p>NMSP EAST (FT) N = 472956.42 E = 803907.94</p>		<p>660'</p>	
<p>N00°32'04"W 2639.99 FT</p>		<p>BOTTOM OF HOLE</p> <p>BOTTOM OF HOLE LAT. = 32.2964697°N LONG. = 103.4856964°W NMSP EAST (FT) N = 472623.45 E = 803249.97</p>		<p>330'</p>		<p>500°30'46"E 2640.71 FT</p>	
<p>W Q CORNER SEC. 20 LAT. = 32.2901082°N LONG. = 103.5006368°W</p> <p>NMSP EAST (FT) N = 470272.94 E = 798651.36</p>		<p>STRATOCASTER "20" FEDERAL #4H ELEV. = 3496.6' LAT. = 32.2882977°N (NAD83) LONG. = 103.4856831°W NMSP EAST (FT) N = 469650.51 E = 803277.59</p>		<p>E Q CORNER SEC. 20 LAT. = 32.2901133°N LONG. = 103.4835498°W</p> <p>NMSP EAST (FT) N = 470316.25 E = 803931.60</p>		<p>660'</p>	
<p>N00°32'11"W 2638.87 FT</p>		<p>NOTE: LATITUDE AND LONGITUDE COORDINATES ARE SHOWN USING THE NORTH AMERICAN DATUM OF 1983 (NAD83). LISTED NEW MEXICO STATE PLANE EAST COORDINATES ARE GRID (NAD83). BASIS OF BEARING AND DISTANCES USED ARE NEW MEXICO STATE PLANE EAST COORDINATES MODIFIED TO THE SURFACE.</p>		<p>SURFACE LOCATION</p>		<p>500°30'45"E 2640.27 FT</p>	
<p>SW CORNER SEC. 20 LAT. = 32.2828561°N LONG. = 103.5006231°W</p> <p>NMSP EAST (FT) N = 467634.68 E = 798676.05</p>		<p>S Q CORNER SEC. 20 LAT. = 32.2828535°N LONG. = 103.4920789°W</p> <p>NMSP EAST (FT) N = 467654.33 E = 801316.62</p>		<p>SE CORNER SEC. 20 LAT. = 32.2828575°N LONG. = 103.4835411°W</p> <p>NMSP EAST (FT) N = 467676.57 E = 803955.21</p>		<p>660'</p>	
<p>S89°34'25"W 2641.13 FT</p>				<p>S89°31'02"W 2639.18 FT</p>			

¹⁷ OPERATOR CERTIFICATION

I hereby certify that the information contained herein is true and complete to the best of my knowledge and belief, and that this organization either owns a working interest or unleased mineral interest in the land including the proposed bottom hole location or has a right to drill this well at this location pursuant to a contract with an owner of such a mineral or working interest, or to a voluntary pooling agreement or a compulsory pooling order heretofore entered by the division.

[Signature] 5/21/13
Signature Date
CALE JACKSON
Printed Name
CALE@enduranceresourcesllc.com
E-mail Address

¹⁸ SURVEYOR CERTIFICATION

I hereby certify that the well location shown on this plat was plotted from field notes of actual surveys made by me or under my supervision, and that the same is true and correct to the best of my belief.

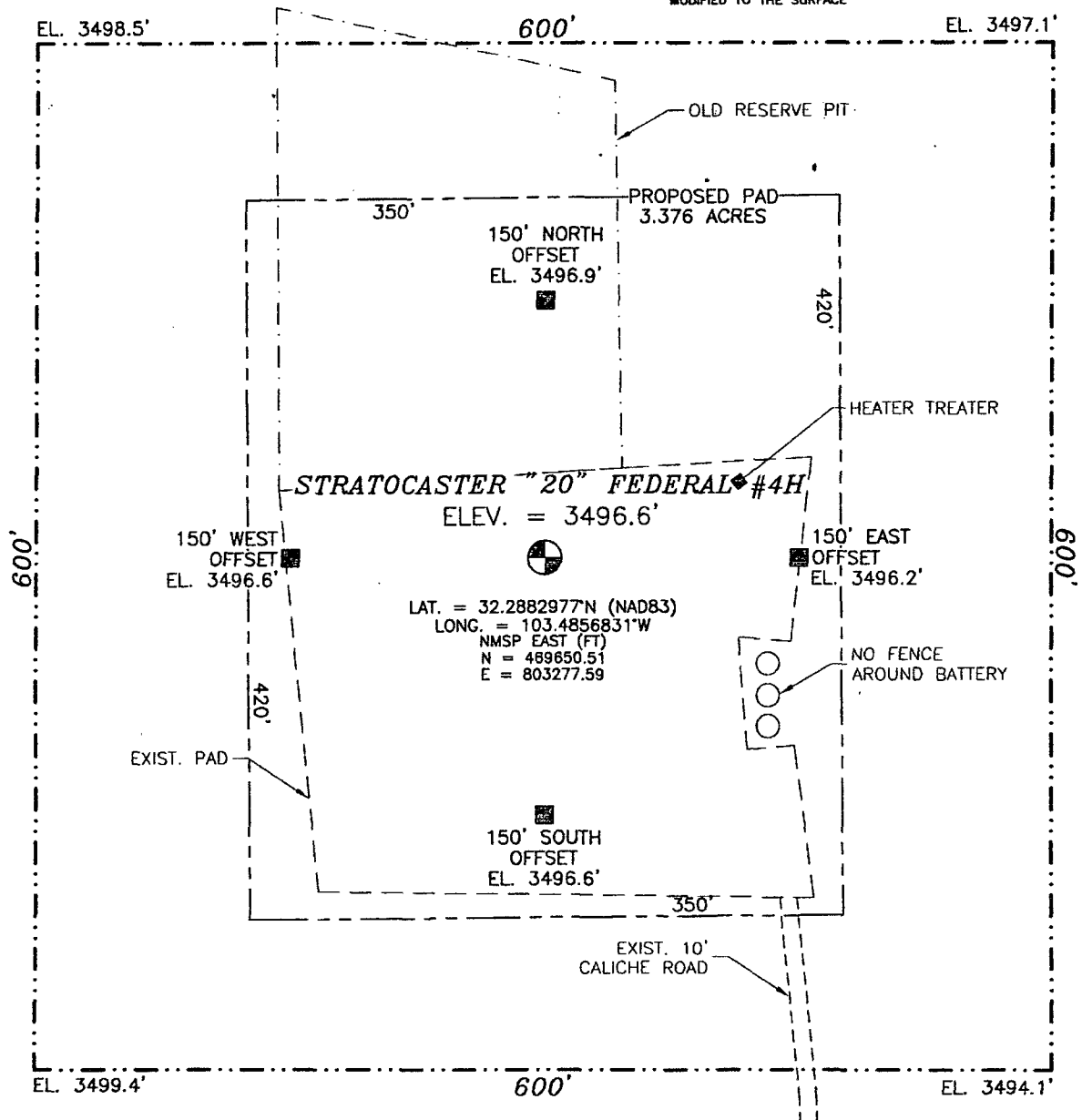
APRIL 25 2013
Date of Survey
[Signature]
Signature and Seal of Professional Surveyor
Certificate Number: **FILIMON F. JARAMILLO, PLS 12797**
SURVEY NO. 1796

AUG 07 2013

dm

SECTION 20, TOWNSHIP 23 SOUTH, RANGE 34 EAST, N.M.P.M.
LEA COUNTY, STATE OF NEW MEXICO
SITE MAP

NOTE: LATITUDE AND LONGITUDE COORDINATES ARE SHOWN USING THE NORTH AMERICAN DATUM OF 1983 (NAD83). LISTED NEW MEXICO STATE PLANE EAST COORDINATES ARE GRID (NAD83). BASIS OF BEARING AND DISTANCES USED ARE NEW MEXICO STATE PLANE EAST COORDINATES MODIFIED TO THE SURFACE



010 50 100 200

SCALE 1" = 100'
DIRECTIONS TO LOCATION

FROM THE INTERSECTION OF CR 21 (DELAWARE BASIN) AND CR J-21 (ANTELOPE RIDGE) GO SOUTH ON CR J-21 FOR APPROX. 2.9 MILES. TURN WEST ON CALICHE LEASE ROAD AND GO APPROX. 0.75 OF A MILE. TURN NORTH AND GO APPROX. 0.2 OF A MILE TO LOCATION.

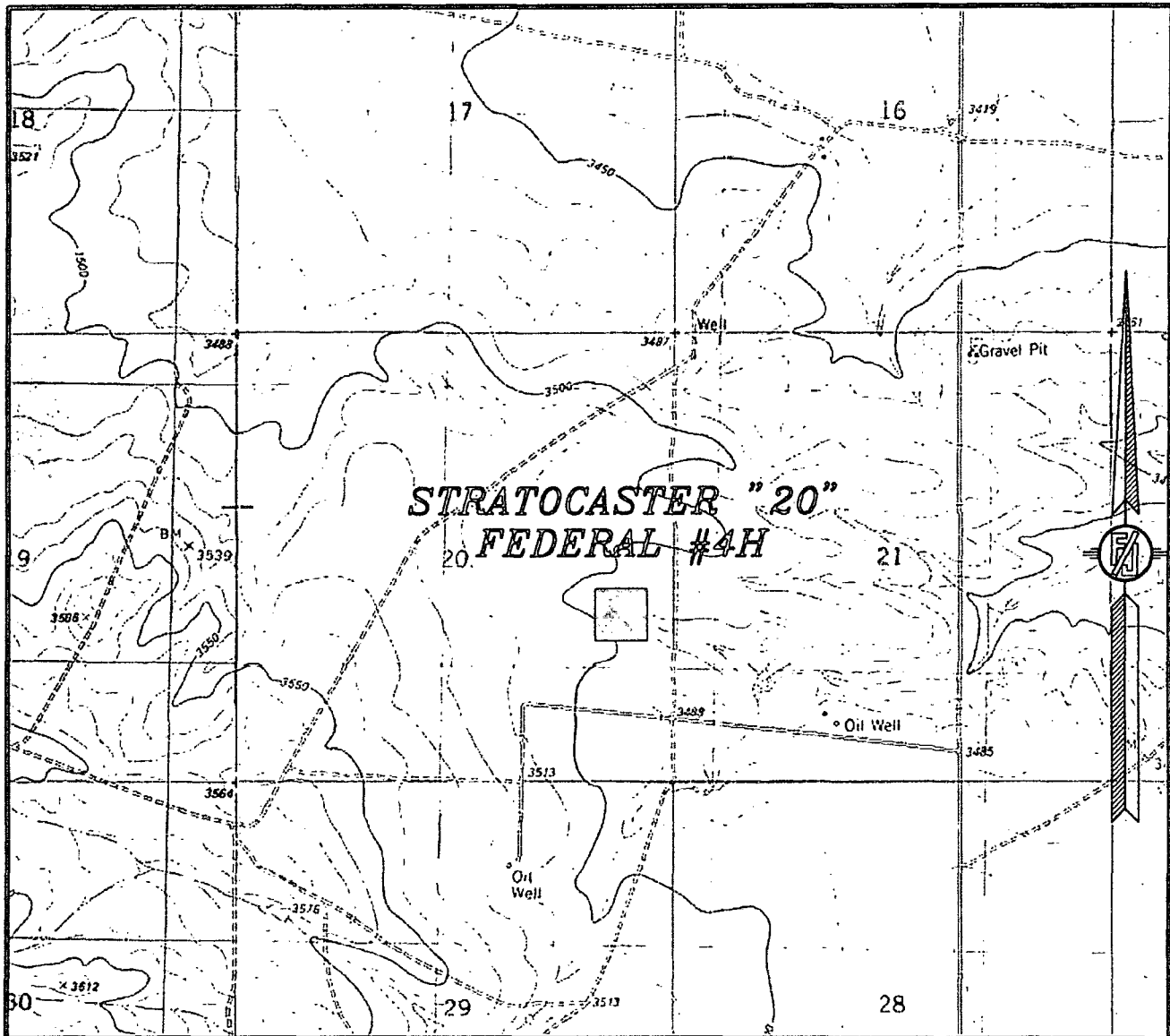
ENDURANCE RESOURCES, LLC
STRATOCASTER "20" FEDERAL #4H
LOCATED 1980 FT. FROM THE SOUTH LINE
AND 660 FT. FROM THE EAST LINE OF
SECTION 20, TOWNSHIP 23 SOUTH,
RANGE 34 EAST, N.M.P.M.
LEA COUNTY, STATE OF NEW MEXICO

APRIL 25, 2013

SURVEY NO. 1796

MADRON SURVEYING, INC. 301 SOUTH CANAL (575) 234-3341 CARLSBAD, NEW MEXICO

SECTION 20, TOWNSHIP 23 SOUTH, RANGE 34 EAST, N.M.P.M.
LEA COUNTY, STATE OF NEW MEXICO
LOCATION VERIFICATION MAP



USGS QUAD MAP:
SAN SIMON SINK

NOT TO SCALE

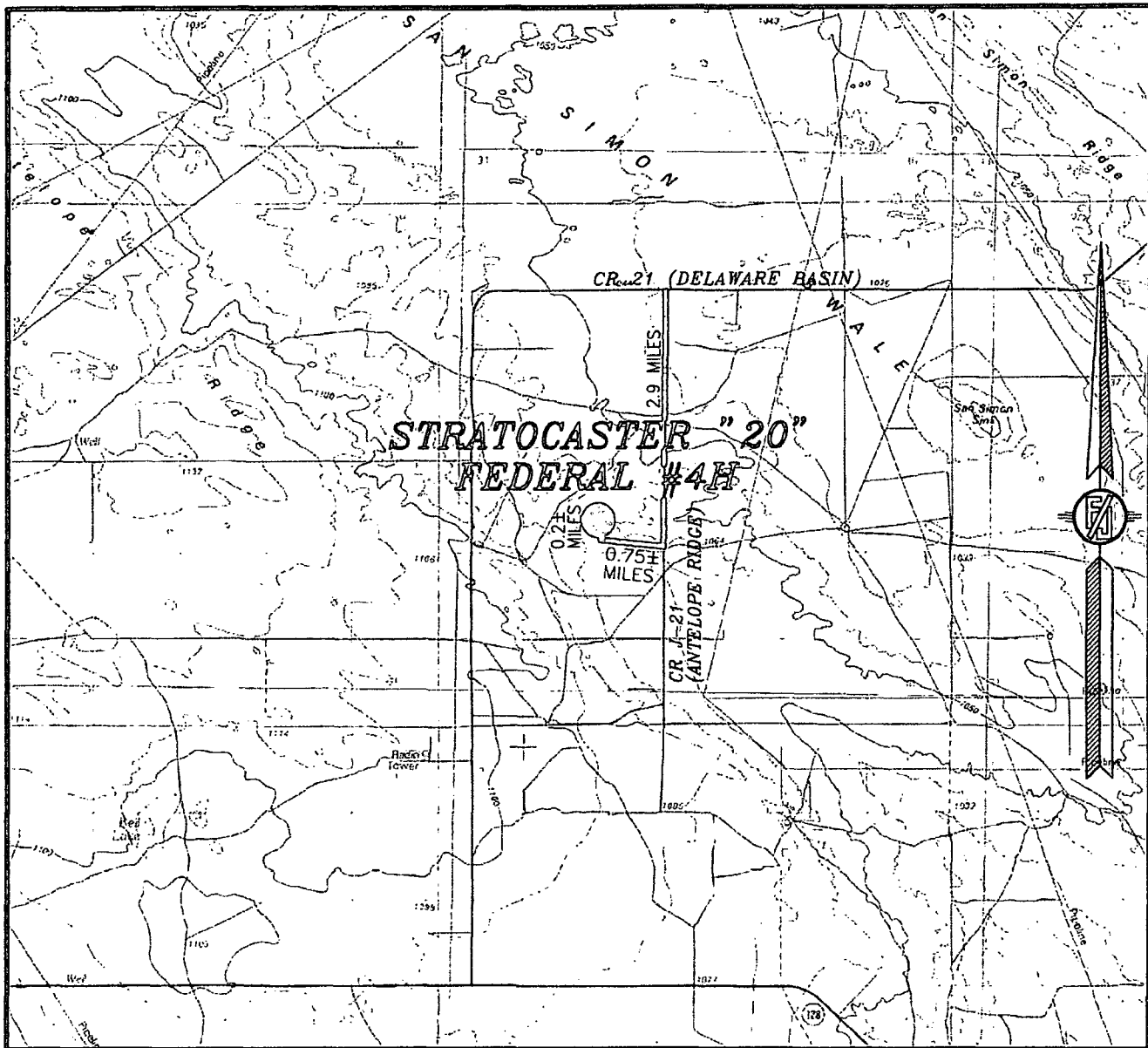
ENDURANCE RESOURCES, LLC
STRATOCASTER "20" FEDERAL #4H
LOCATED 1980 FT. FROM THE SOUTH LINE
AND 660 FT. FROM THE EAST LINE OF
SECTION 20, TOWNSHIP 23 SOUTH,
RANGE 34 EAST, N.M.P.M.
LEA COUNTY, STATE OF NEW MEXICO

APRIL 25, 2013

SURVEY NO. 1796

MADRON SURVEYING, INC. 301 SOUTH CANAL (575) 234-3341 CARLSBAD, NEW MEXICO

SECTION 20, TOWNSHIP 23 SOUTH, RANGE 34 EAST, N.M.P.M.
LEA COUNTY, STATE OF NEW MEXICO
VICINITY MAP



NOT TO SCALE

ENDURANCE RESOURCES, LLC
STRATOCASTER "20" FEDERAL #4H
LOCATED 1980 FT. FROM THE SOUTH LINE
AND 660 FT. FROM THE EAST LINE OF
SECTION 20, TOWNSHIP 23 SOUTH,
RANGE 34 EAST, N.M.P.M.
LEA COUNTY, STATE OF NEW MEXICO

DIRECTIONS TO LOCATION

FROM THE INTERSECTION OF CR 21 (DELAWARE BASIN) AND CR J-21 (ANTELOPE RIDGE) GO SOUTH ON CR J-21 FOR APPROX. 2.9 MILES. TURN WEST ON CALICHE LEASE ROAD AND GO APPROX. 0.75 OF A MILE. TURN NORTH AND GO APPROX. 0.2 OF A MILE TO LOCATION.

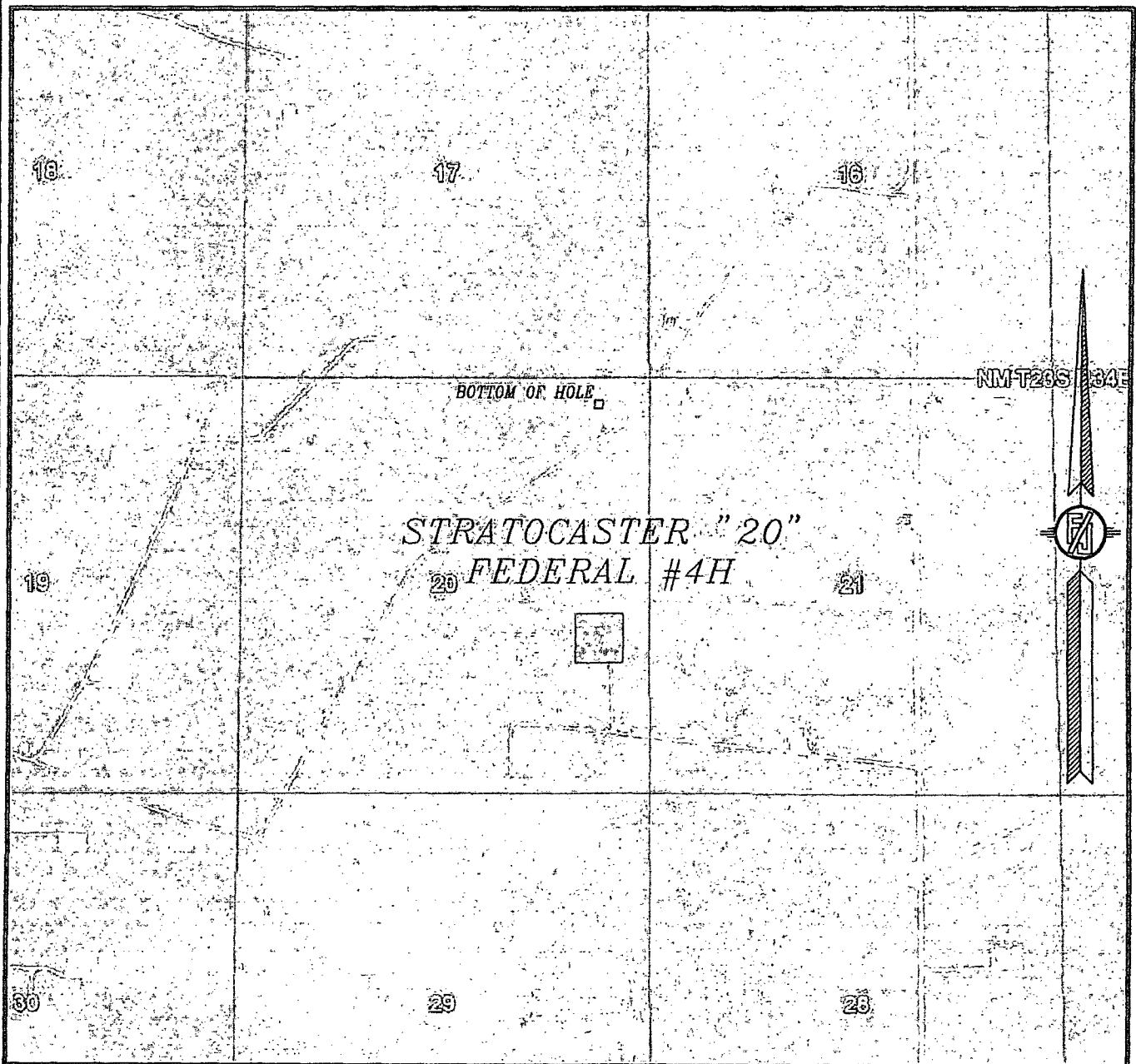
APRIL 25, 2013

MADRON SURVEYING, INC. 301 SOUTH CANAL (575) 234-3341

SURVEY NO. 1796

CARLSBAD, NEW MEXICO

SECTION 20, TOWNSHIP 23 SOUTH, RANGE 34 EAST, N.M.P.M.
LEA COUNTY, STATE OF NEW MEXICO
AERIAL PHOTO



NOT TO SCALE
AERIAL PHOTO:
GOOGLE EARTH
MARCH 2012

ENDURANCE RESOURCES, LLC
STRATOCASTER "20" FEDERAL #4H
LOCATED 1980 FT. FROM THE SOUTH LINE
AND 660 FT. FROM THE EAST LINE OF
SECTION 20, TOWNSHIP 23 SOUTH,
RANGE 34 EAST, N.M.P.M.
LEA COUNTY, STATE OF NEW MEXICO

APRIL 25, 2013

SURVEY NO. 1796

MADRON SURVEYING, INC. 301 SOUTH CANAL (575) 234-3341 CARLSBAD, NEW MEXICO