

District I
1625 N. French Dr., Hobbs, NM 88240
Phone: (505) 393-6161 Fax: (505) 393-0720
District II
811 S. First St., Artesia, NM 88210
Phone: (505) 748-1283 Fax: (505) 748-9720
District III
1000 Rio Brazos Road, Aztec, NM 87410
Phone: (505) 334-6178 Fax: (505) 334-6170
District IV
1220 S. St. Francis Dr., Santa Fe, NM 87505
Phone: (505) 476-3460 Fax: (505) 476-3462

HOBBES OGD
AUG 05 2013
RECEIVED

State of New Mexico
Energy, Minerals & Natural Resources Department
OIL CONSERVATION DIVISION
1220 South St. Francis Dr.
Santa Fe, NM 87505

Form C-102
Revised August 1, 2011
Submit one copy to appropriate
District Office

☐ AMENDED REPORT

WELL LOCATION AND ACREAGE DEDICATION PLAT

API Number 30-025-41316	Pool Code 13320	Pool Name Corbin; Wolfcamp, South
Property Code 40062	Property Name CORBIN SOUTH FED.	Well Number 1
OGRID No. 116696	Operator Name OXY USA INC.	Elevation 3950.4'

Surface Location

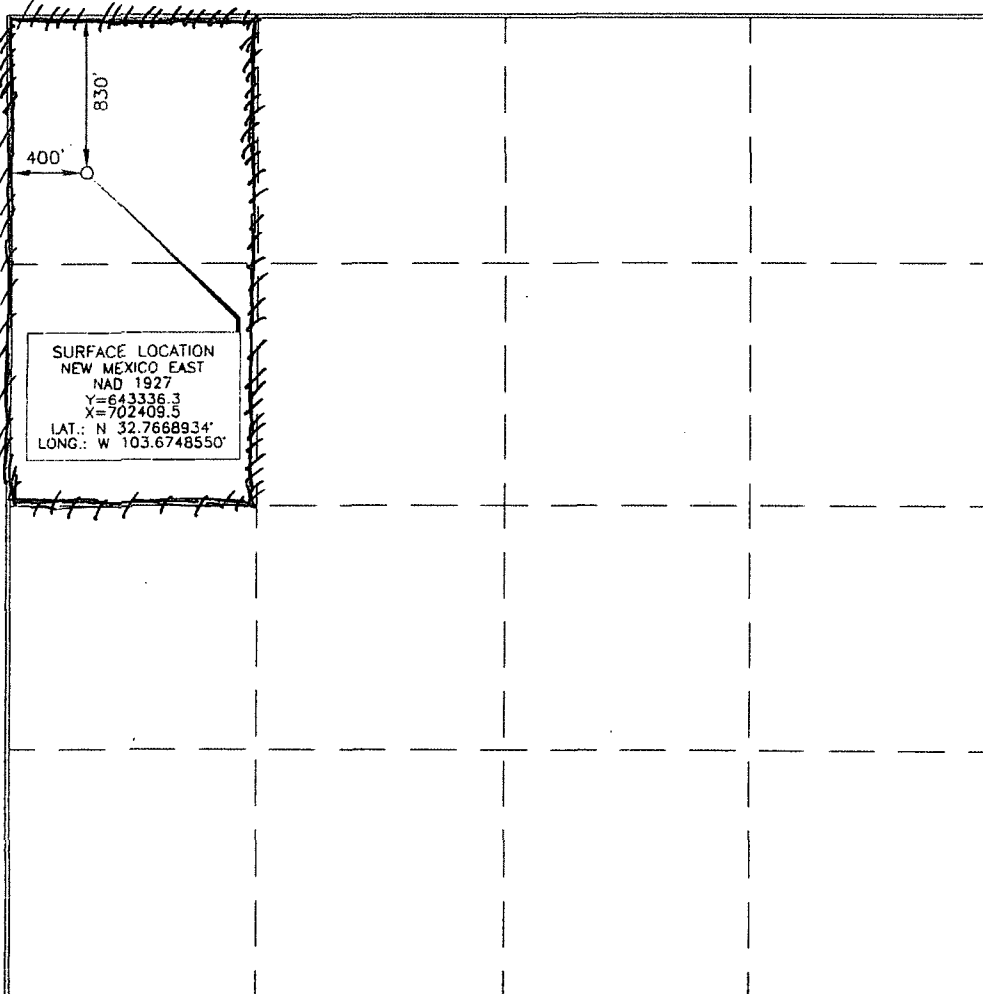
UL or lot no.	Section	Township	Range	Lot Idn	Feet from the	North/South line	Feet from the	East/West line	County
D	9	18 SOUTH	33 EAST, N.M.P.M.		830'	NORTH	400'	WEST	LEA

Bottom Hole Location If Different From Surface

UL or lot no.	Section	Township	Range	Lot Idn	Feet from the	North/South line	Feet from the	East/West line	County

Dedicated Acres 80	Joint or Infill	Consolidation Code	Order No.
------------------------------	-----------------	--------------------	-----------

No allowable will be assigned to this completion until all interests have been consolidated or a non-standard unit has been approved by the division.



OPERATOR CERTIFICATION

I hereby certify that the information contained herein is true and complete to the best of my knowledge and belief, and that this organization either owns a working interest or unleased mineral interest in the land including the proposed bottom hole location or has a right to drill this well at this location pursuant to a contract with an owner of such a mineral or working interest, or to a voluntary pooling agreement or a compulsory pooling order heretofore entered by the division.

Jennifer Duarte 4/18/13
Signature Date
Jennifer Duarte
Printed Name
jenniferduarte@oxy.com
Email Address

SURVEYOR CERTIFICATION

I hereby certify that the well location shown on this plat was plotted from field notes of legal surveys made by me or under my supervision, and that the same is true and correct to the best of my belief.

DECEMBER 18, 2012
Date of Survey
Signature and Seal of Professional Surveyor

Samuel J. Paul 1/13/2013
Certificate Number 15079

WO# 121218WL-e (KA)

AUG 13 2012