

DISTRICT I  
1625 N. French Dr., Hobbs, NM 88240  
Phone: (575) 393-6161 Fax: (575) 393-0720

DISTRICT II  
811 S. First St., Artesia, NM 88210  
Phone: (575) 748-1283 Fax: (575) 748-9720

DISTRICT III  
1000 Rio Brazos Road, Aztec, NM 87410  
Phone: (505) 334-6178 Fax: (505) 334-6113

DISTRICT IV  
1220 S. St. Francis Dr., Santa Fe, NM 87505  
Phone: (505) 476-3460 Fax: (505) 476-3462

State of New Mexico  
Energy, Minerals & Natural Resources Department  
OIL CONSERVATION DIVISION  
1220 South St. Francis Dr.  
Santa Fe, New Mexico 87505

HOBBS OCD

Form C-102  
Revised August 1, 2011  
Submit one copy to appropriate  
District Office

AUG 30 2013

RECEIVED

AMENDED REPORT

WELL LOCATION AND ACREAGE DEDICATION PLAT

API Number <b>30-025-41328</b>	Pool Code <b>62180</b>	Pool Name <b>VACUUM; GRAYBURG SAN ANDRES</b>
Property Code <b>30022</b>	Property Name <b>VACUUM GRAYBURG (VGSAU) SAN ANDRES UNIT</b>	Well Number <b>113</b>
OGRID No. <b>4323</b>	Operator Name <b>CHEVRON USA INC</b>	Elevation <b>3985'</b>

Surface Location

UL or lot No.	Section	Township	Range	Lot Idn	Feet from the	North/South line	Feet from the	East/West line	County
P	1	18-S	34-E		670	SOUTH	175	EAST	LEA

Bottom Hole Location If Different From Surface

UL or lot No.	Section	Township	Range	Lot Idn	Feet from the	North/South line	Feet from the	East/West line	County

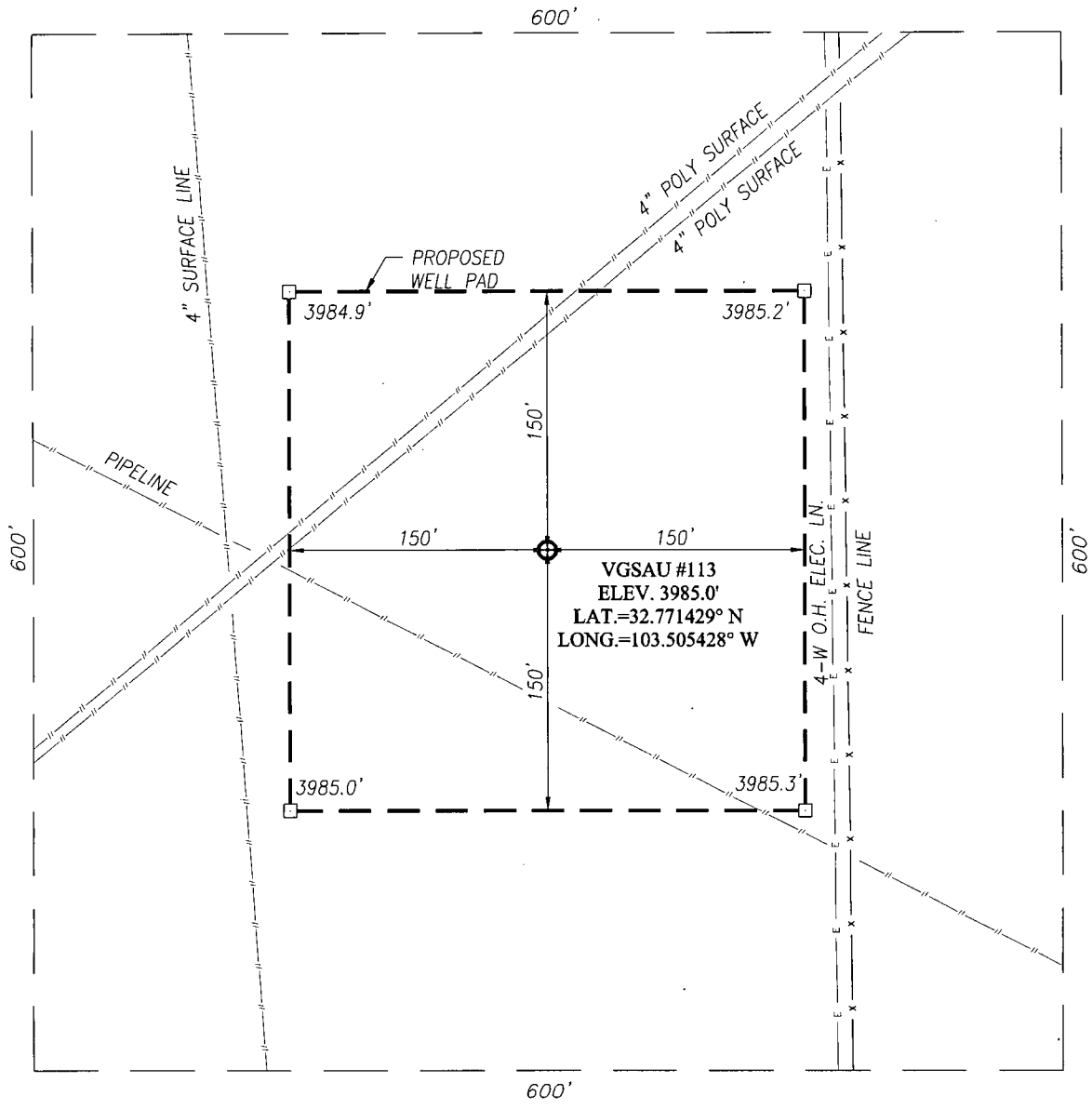
Dedicated Acres	Joint or Infill	Consolidation Code	Order No.
<b>40</b>			

NO ALLOWABLE WILL BE ASSIGNED TO THIS COMPLETION UNTIL ALL INTERESTS HAVE BEEN CONSOLIDATED OR A NON-STANDARD UNIT HAS BEEN APPROVED BY THE DIVISION

<p>GEODETIC COORDINATES NAD 27 NME</p> <p>SURFACE LOCATION Y=645352.2 N X=754478.2 E</p> <p>LAT.=32.771429° N LONG.=103.505428° W</p>	<p>OPERATOR CERTIFICATION</p> <p><i>I hereby certify that the information herein is true and complete to the best of my knowledge and belief, and that this organization either owns a working interest or unleased mineral interest in the land including the proposed bottom hole location or has a right to drill this well at this location pursuant to a contract with an owner of such mineral or working interest, or to a voluntary pooling agreement or a compulsory pooling order heretofore entered by the division.</i></p> <p><i>Denise Pinkerton</i> 08/29/2013 Signature Date</p> <p>Denise Pinkerton Printed Name</p> <p>Leakejd@CHEVRON.COM E-mail Address</p>
	<p>SURVEYOR CERTIFICATION</p> <p><i>I hereby certify that the well location shown on this plat was plotted from field notes of actual surveys made by me or under my supervision, and that the same is true and correct to the best of my belief.</i></p> <p>JULY 26, 2013</p> <p>Date of Survey</p> <p><i>Ronald J. Eidson</i> Signature of Registered Surveyor</p> <p>NEW MEXICO REGISTERED SURVEYOR 3239</p> <p><i>Ronald J. Eidson</i> 8/6/2013 Certificate No. PROFESSIONAL 12641 Ronald J. Eidson 3239</p>
	<p>ACR</p> <p>JWSC W.O. 13.11.0856</p>

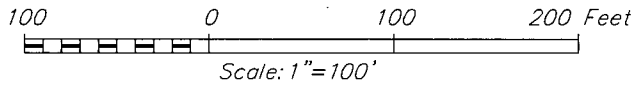
SEP 04 2013

**SECTION 1, TOWNSHIP 18 SOUTH, RANGE 34 EAST, N.M.P.M.**  
 LEA COUNTY NEW MEXICO



**DIRECTIONS TO LOCATION**

FROM THE INTERSECTION OF STATE HWY. 238 AND CO. RD. L51 (TEXAS CAMP), GO WEST ON CO. RD. L51 APPROX. 300 FEET. TURN LEFT AND GO APPROX. 0.8 MILES. THIS LOCATION IS APPROX. 350 FEET EAST.



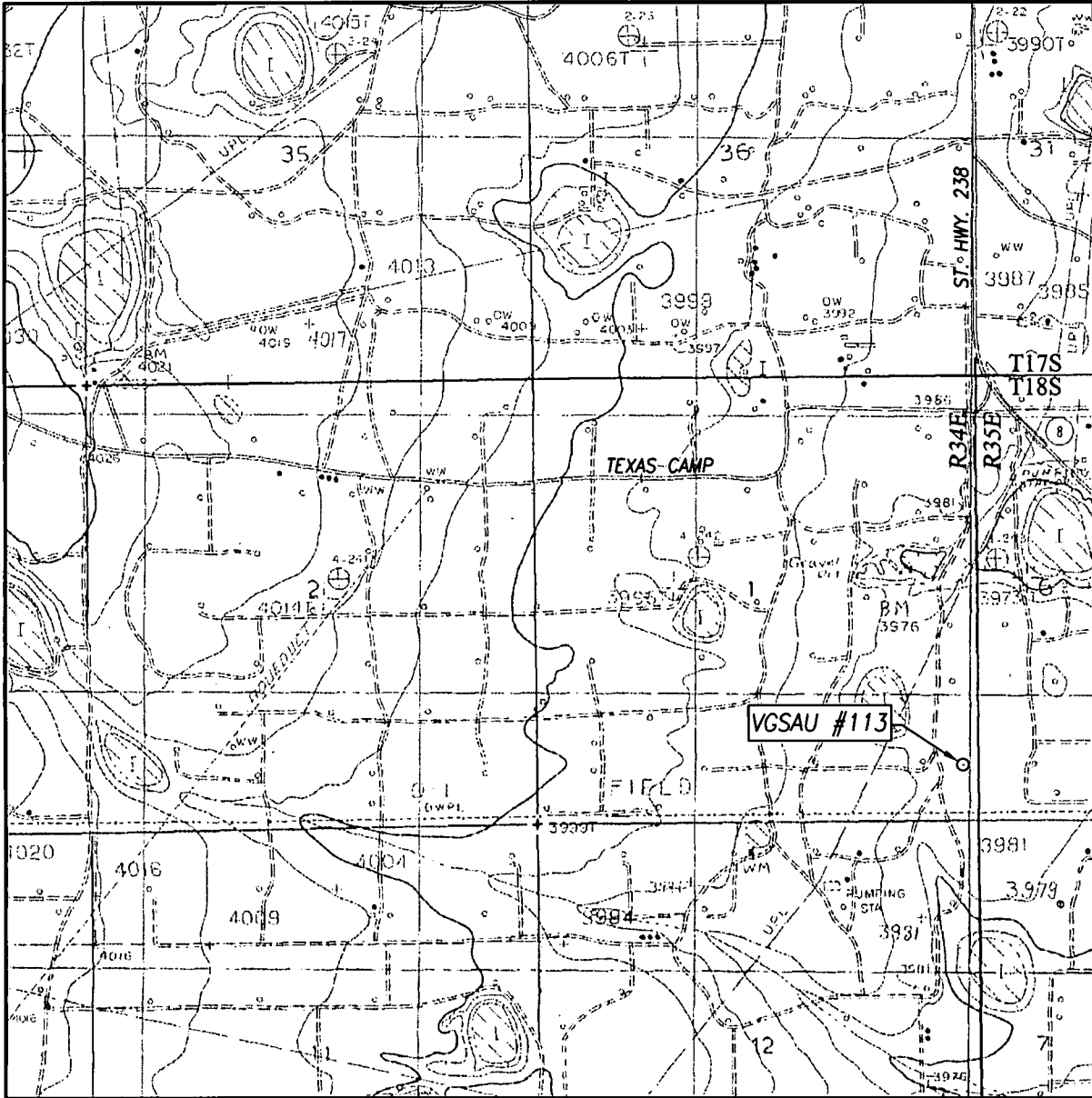
**CHEVRON USA INC**

**VGSAU #113 WELL**  
 LOCATED 670 FEET FROM THE SOUTH LINE  
 AND 175 FEET FROM THE EAST LINE OF SECTION 1,  
 TOWNSHIP 18 SOUTH, RANGE 34 EAST, N.M.P.M.,  
 LEA COUNTY, NEW MEXICO

Survey Date: 7/26/13	CAD Date: 7/31/13	Drawn By: ACK
W.O. No.: 13110856	Rev. :	Rel. W.O.:

PROVIDING SURVEYING SERVICES  
 SINCE 1946  
**JOHN WEST SURVEYING COMPANY**  
 412 N. DAL PASO  
 HOBBS, N.M. 88240  
 (575) 393-3117 www.jwsc.biz

# LOCATION VERIFICATION MAP



SCALE: 1" = 2000'

CONTOUR INTERVAL:  
BUCKEYE, N.M. - 5'

SEC. 1 TWP. 18-S RGE. 34-E

SURVEY \_\_\_\_\_ N.M.P.M.

COUNTY LEA STATE NEW MEXICO


DESCRIPTION 670' FSL & 175' FEL

ELEVATION 3985'

OPERATOR CHEVRON USA INC

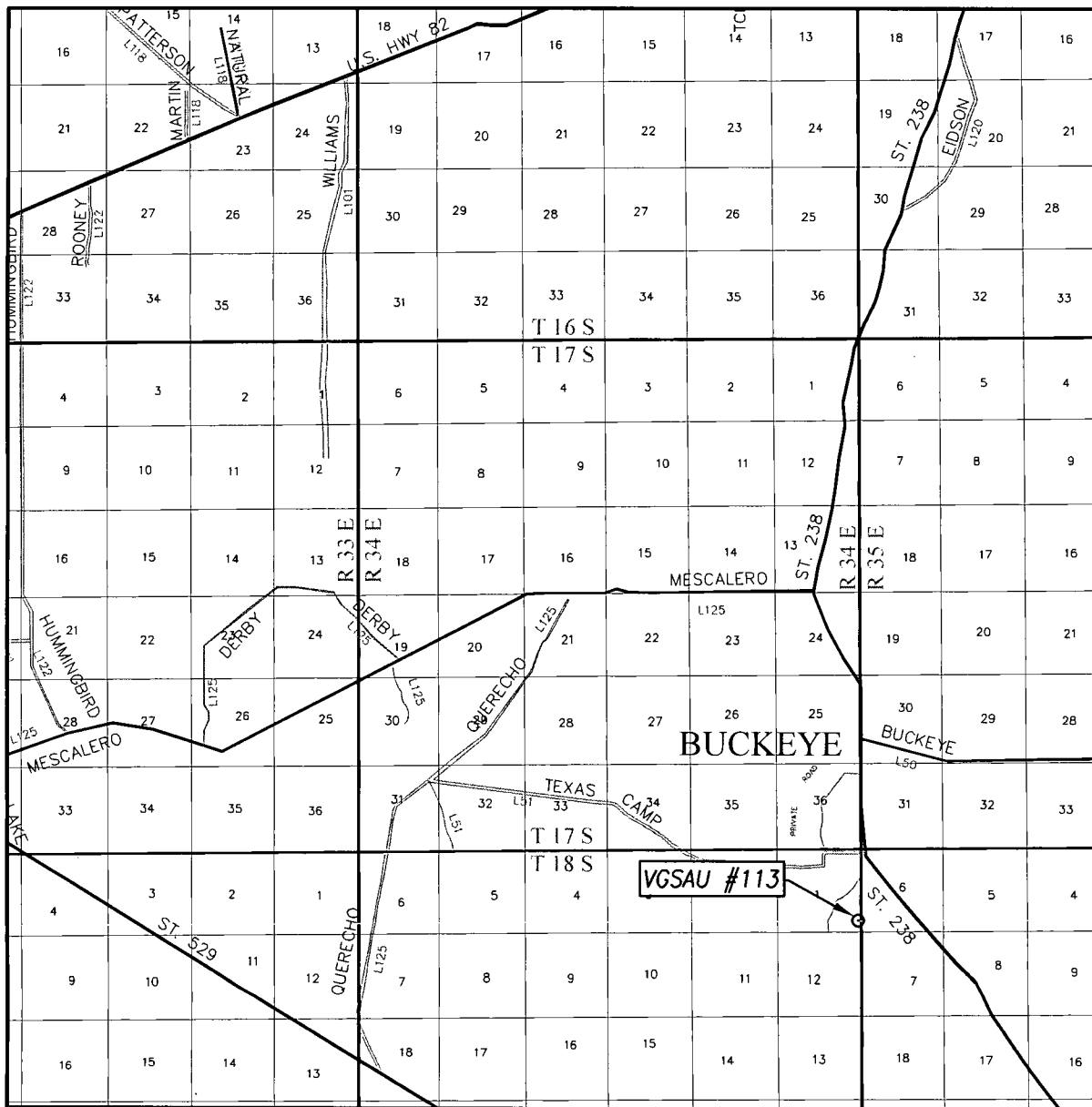
LEASE VGS AU

U.S.G.S. TOPOGRAPHIC MAP  
BUCKEYE, N.M.



PROVIDING SURVEYING SERVICES  
SINCE 1946  
**JOHN WEST SURVEYING COMPANY**  
412 N. DAL PASO  
HOBBS, N.M. 88240  
(575) 393-3117 [www.jwsc.biz](http://www.jwsc.biz)

# VICINITY MAP

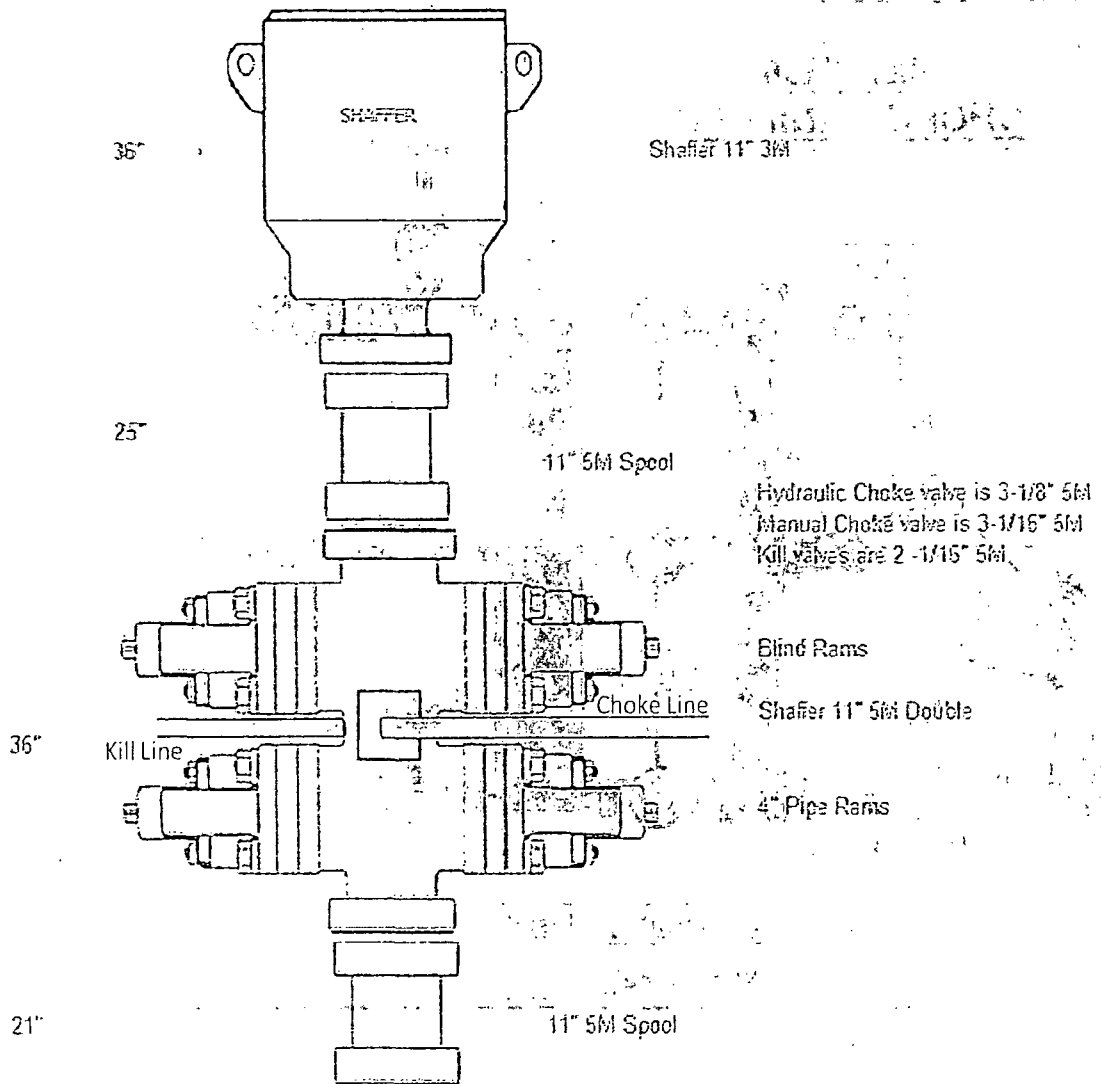


SCALE: 1" = 2 MILES

SEC. 1 TWP. 18-S RGE. 34-E  
 SURVEY N.M.P.M.  
 COUNTY LEA STATE NEW MEXICO  
 DESCRIPTION 670' FSL & 175' FEL  
 ELEVATION 3985'  
 OPERATOR CHEVRON USA INC  
 LEASE VGS AU

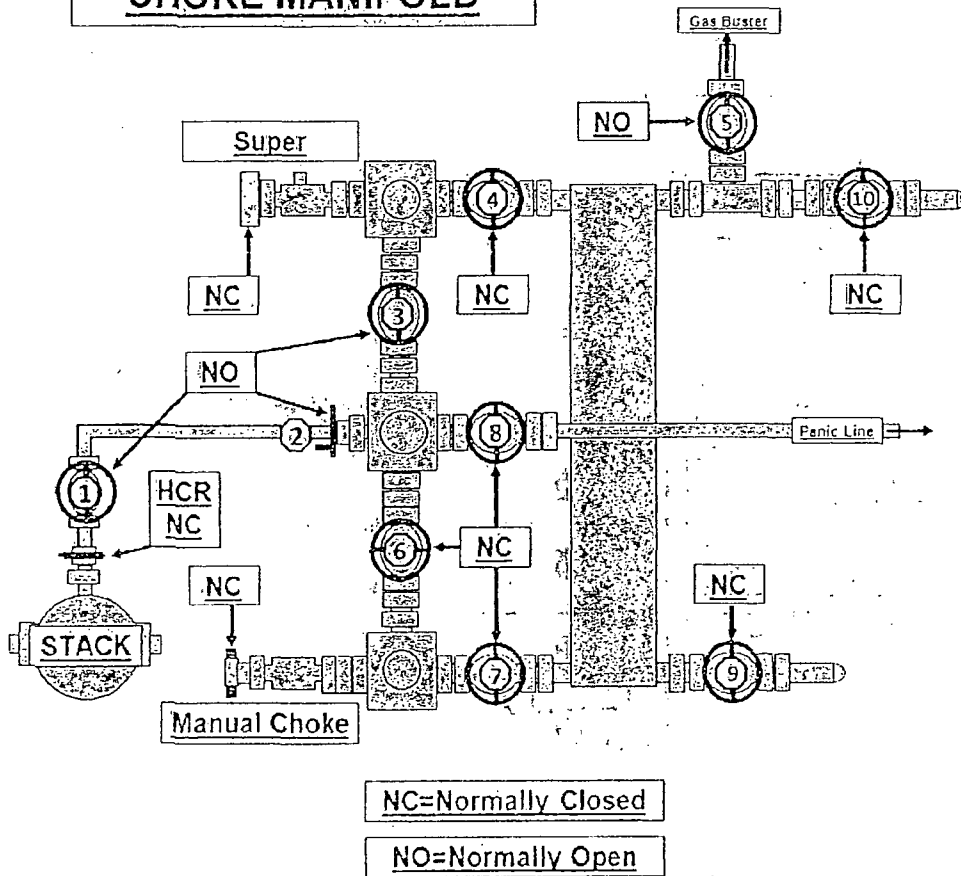
PROVIDING SURVEYING SERVICES  
 SINCE 1946  
**JOHN WEST SURVEYING COMPANY**  
 412 N. DAL PASO  
 HOBBS, N.M. 88240  
 (575) 393-3117 www.jwsc.biz

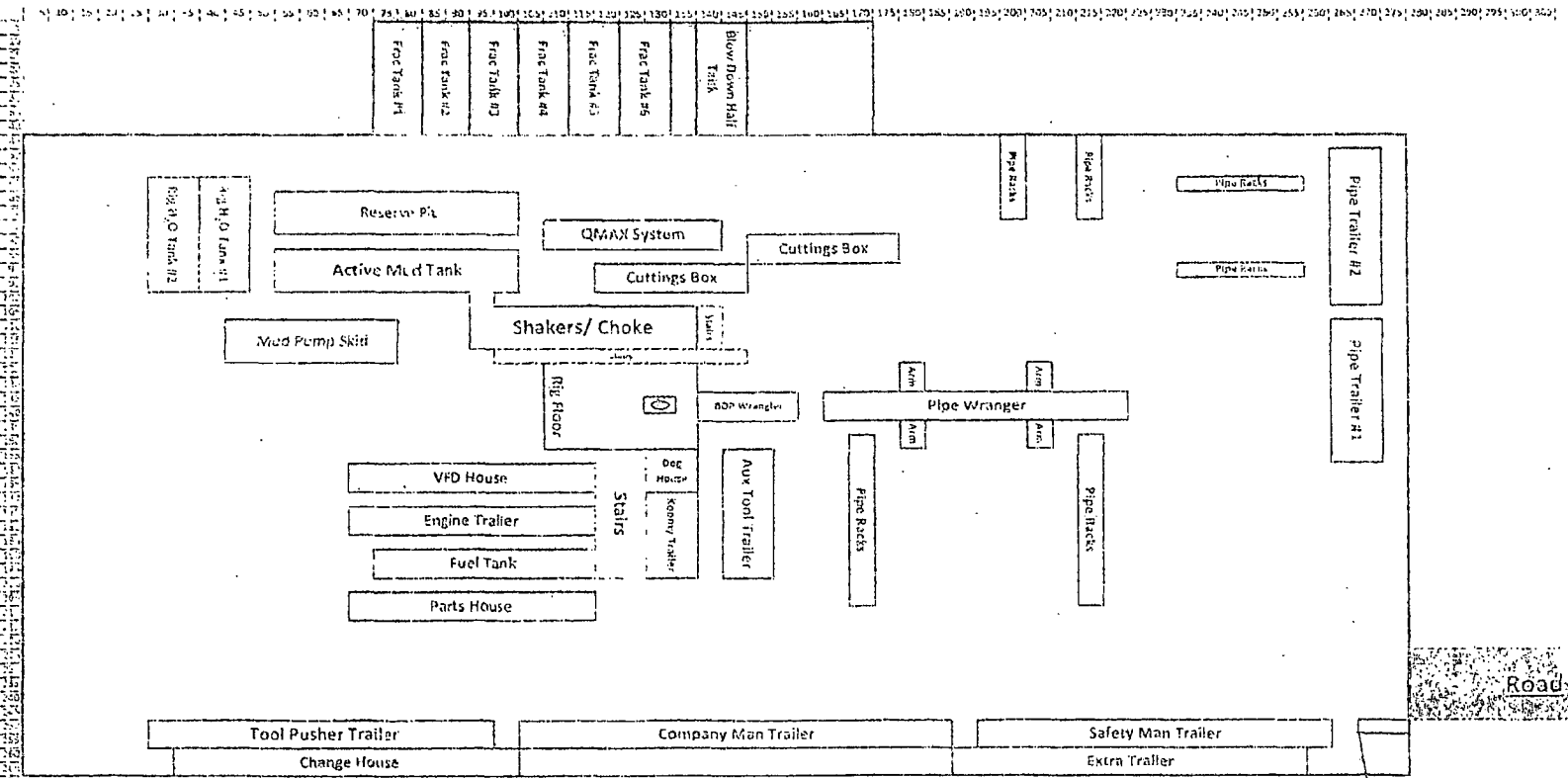
H&P 356 Bop Schematic



Choke Manifold Diagram

**H&P #356  
CHOKE MANIFOLD**





1. The mud tanks are located in the center of the site and are used to store mud for use in the well. The mud tanks are used to store mud for use in the well. The mud tanks are used to store mud for use in the well.

2. The mud tanks are located in the center of the site and are used to store mud for use in the well. The mud tanks are used to store mud for use in the well. The mud tanks are used to store mud for use in the well.

3. The mud tanks are located in the center of the site and are used to store mud for use in the well. The mud tanks are used to store mud for use in the well. The mud tanks are used to store mud for use in the well.

100' 90' 80' 70' 60' 50' 40' 30' 20' 10' 0' 10' 20' 30' 40' 50' 60' 70' 80' 90' 100'