



**WARRIOR**  
Energy Services Corp.

## Gamma Ray / CCL Temperature Log

Company Mewbourne Oil Company Well Wildcat "21" LI Fed Com #1H Field Antelope Ridge Bone Springs West County Lea State New Mexico	Company		Mewbourne Oil Company	
	Well		Wildcat "21" LI Fed Com #1H	
	Field		Antelope Ridge Bone Springs West	
	County		Lea	State New Mexico
	Location:		API # : 30-025-41261 2310' FSL & 150' FWL SEC .21 TWP .23S RGE .34E	
		Other Services		CNL
		Elevation		
Permanent Datum		Ground Level	Elevation	3498'
Log Measured From		K.B. 17ft		K.B. 3515'
Drilling Measured From		Kelly Bushing		D.F. 3514'
				G.L. 3498'

Date	8-30-2013
Run Number	One
Depth Driller	11,500'
Depth Logger	5150'
Bottom Logged Interval	5150'
Top Log Interval	Surface
Open Hole Size	8-3/4"
Type Fluid	Water
Density / Viscosity	N/A
Max. Recorded Temp.	See Log
Estimated Cement Top	See Log
Time Well Ready	See Log
Time Logger on Bottom	See Log
Equipment Number	WL-3232
Location	Hobbs NM
Recorded By	B. Jean
Witnessed By	Mr. Simmons

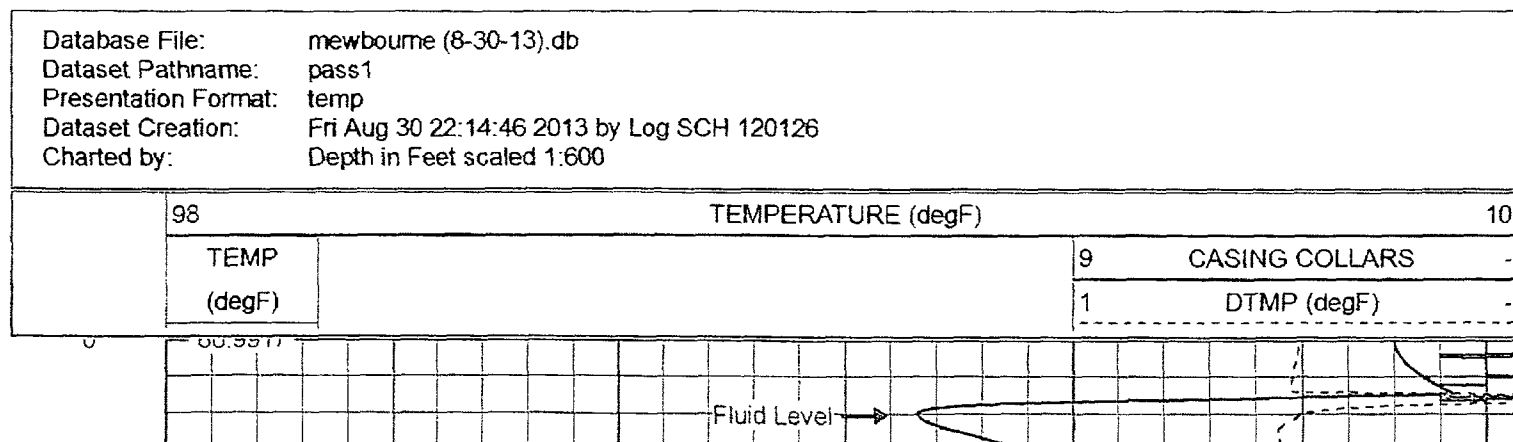
Borehole Record				Tubing Record			
Run Number	Bit	From	To	Size	Weight	From	To

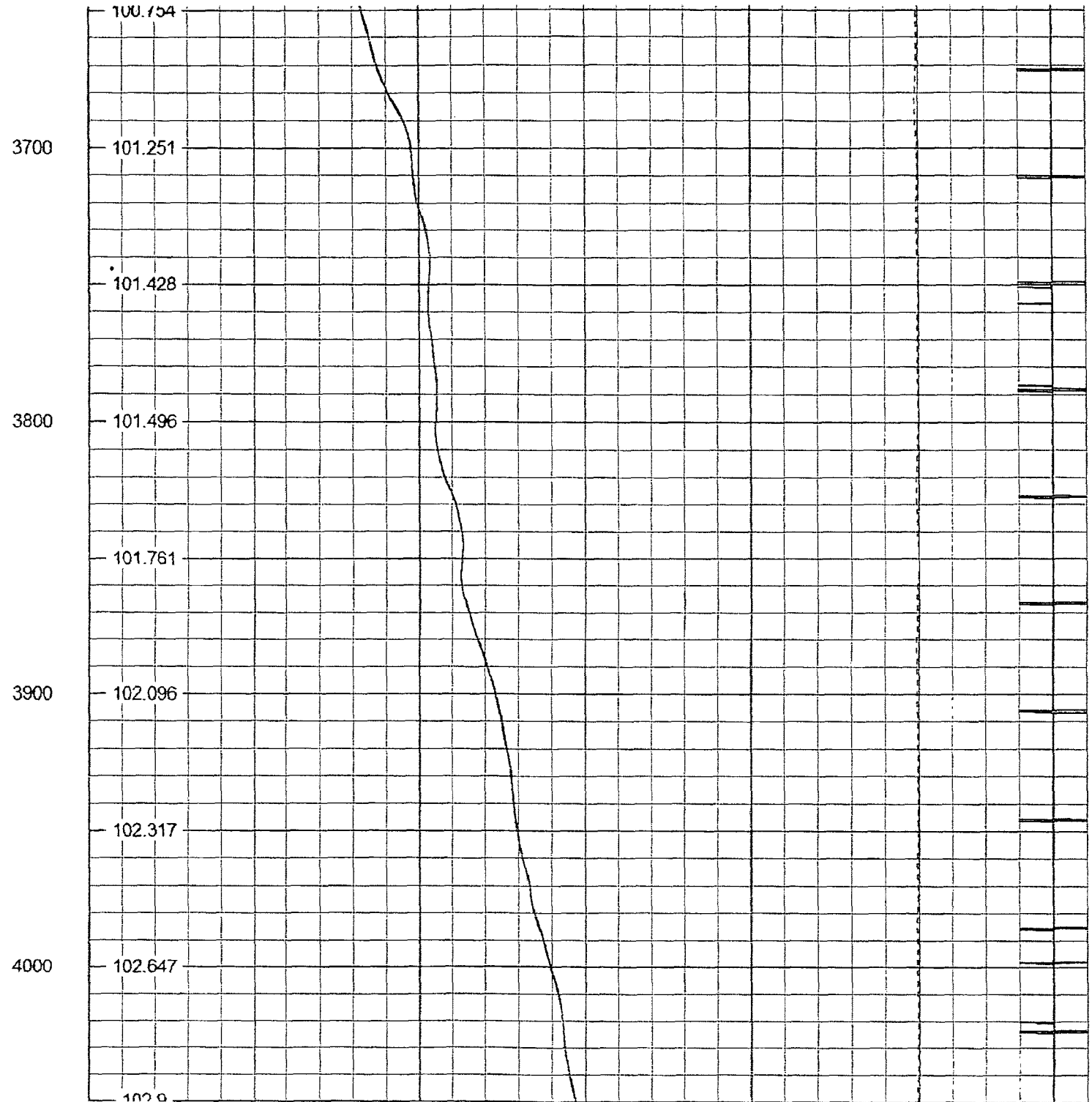
Casing Record	Size	Wgt/Ft	Top	Bottom
Surface String	13-3/8"		Surface	1093'
Prot. String	9-5/8"		Surface	5082'
Production String	7"		Surface	11,500'
Liner				

All interpretations are opinions based on inferences from electrical or other measurements and we cannot and do not guarantee the accuracy or correctness of any interpretation, and we shall not, except in the case of gross or willful negligence on our part, be liable or responsible for any loss, costs, damages, or expenses incurred or sustained by anyone resulting from any interpretation made by any of our officers, agents or employees. These interpretations are also subject to our general terms and conditions set out in our current Price Schedule.

Comments

			1_68s7	7.00	1.69	47.00
CCL	6.05		CCL-Bell705 (705-001)	1.70	1.38	8.00
GR	2.70		GR-Bell710 (710-001)	3.00	1.38	15.00
TEMP	0.20		TEMP-Bell765 (765-001)	2.20	1.38	5.00
Dataset: mewbourne (8-30-13).db: field/well/run1/pass1 Total Length: 28.90 ft Total Weight: 170.00 lb O.D.: 1.69 in						





4100

103.161

103.024

4200

103.342

103.802

4300

104.083

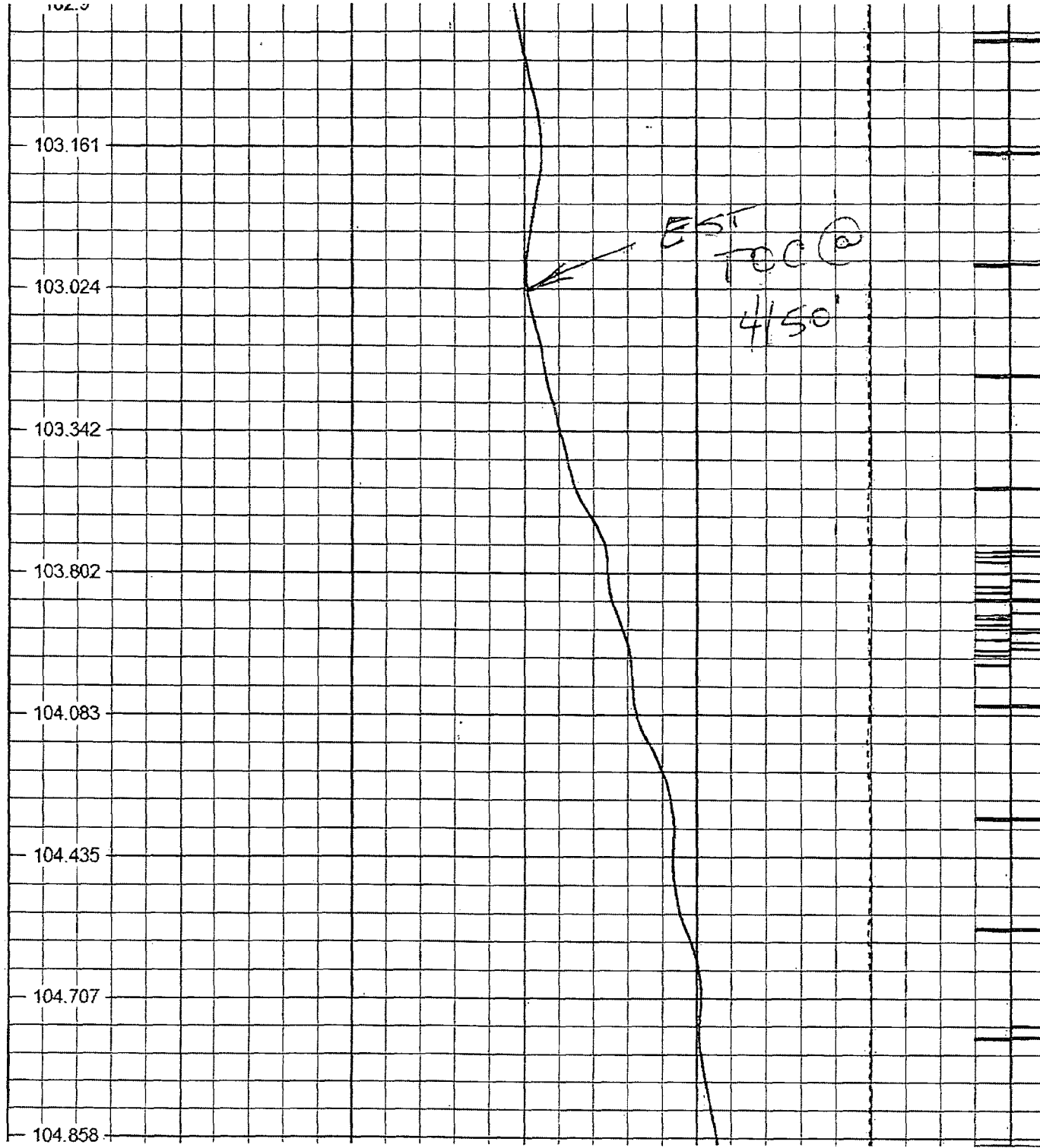
104.435

4400

104.707

104.858

EST  
TOC @  
4/50'



4500

105.331

105.654

4600

105.856

106.152

4700

106.479

106.481

4800

106.936

107.379

