

DISTRICT I

P.O. Box 1980, Hobbs, NM 88240

DISTRICT II

P.O. Box Drawer DD, Artesia, NM 88210

DISTRICT III

1000 Rio Brazos Rd., Aztec, NM 87410

**OIL CONSERVATION DIVISION**

P.O. Box 2088

Santa Fe, New Mexico 87504-2088

WELL API NO.	30-025-32801
5. Indicate Type of Lease	STATE <input checked="" type="checkbox"/> FEE <input type="checkbox"/>
6. State Oil / Gas Lease No.	B-1113-1
7. Lease Name or Unit Agreement Name	CENTRAL VACUUM UNIT
8. Well No.	194
9. Pool Name or Wildcat	VACUUM GRAYBURG SAN ANDRES
10. Elevation (Show whether DF, RKB, RT, GR, etc.) 3979' GR	

SUNDRY NOTICES AND REPORTS ON WELLS  
(DO NOT USE THIS FORM FOR PROPOSALS TO DRILL OR TO DEEPEN OR PLUG BACK TO  
DIFFERENT RESERVOIR. USE "APPLICATION FOR PERMI  
(FORM C-101) FOR SUCH PROPOSALS.

1. Type of Well: OIL WELL ☐ GAS WELL ☐ OTHER INJECTION

2. Name of Operator  
CHEVRON USA INC

3. Address of Operator  
15 SMITH RD, MIDLAND, TX 79705

4. Well Location  
Unit Letter C : 14 Feet From The NORTH Line and 1917 Feet From The WEST Line  
Section 6 Township 18-S Range 35-E NMPM LEA COUNTY

11. Check Appropriate Box to Indicate Nature of Notice, Report, or Other Data

**NOTICE OF INTENTION TO:**

PERFORM REMEDIAL WORK ☐ PLUG AND ABANDON ☐  
TEMPORARILY ABANDON ☐ CHANGE PLANS ☐  
PULL OR ALTER CASING ☐  
OTHER: ☐

**SUBSEQUENT REPORT OF:**

REMEDIAL WORK ☒ ALTERING CASING ☐  
COMMENCE DRILLING OPERATION ☐ PLUG AND ABANDONMENT ☐  
CASING TEST AND CEMENT JOB ☐  
OTHER: ☒ REPAIR TBG, PKR, STIM

12. Describe Proposed or Completed Operations (Clearly state all pertinent details, and give pertinent dates, including estimated date of starting any proposed work) SEE RULE 1103.

PLEASE SEE ATTACHED SUMMARY OF WELL WORK PERFORMED.



I hereby certify that the information above is true and complete to the best of my knowledge and belief.

SIGNATURE Denise Pinkerton TITLE Regulatory Specialist

DATE 10/3/2005

TYPE OR PRINT NAME Denise Pinkerton

Telephone No. 432-687-7375

(This space for State Use)

APPROVED Gary W. Wink TITLE OC FIELD REPRESENTATIVE II/STAFF MANAGER  
CONDITIONS OF APPROVAL, IF ANY:

DATE

**OCT 14 2005**

Date	Daily Operations
02-SEP-2005	TRAVEL TIME, ATTEND TAILGATE SAFETY MEETING, REVIEW JSA'S. MOVE IN REV UNIT, FRAC TKS, MUD TK. TBG PRESS=1300#, BLED TBG DOWN 750#, PMP 100 BBLS 48 9.9# BRINE DN TBG, TBG PRESS=0#, PMP 20 BBLS 12# MUD DN TBG, KILL WELL, MIRU KEY. REMOVE C02 WELL HEAD NU BOPS. MOVE IN 4900' 2 7/8" WS 162 JTS & 2 SETS PIPE RACKS, TALLY WS. SHUT DOWN      PREP TO PULL OFF PKR CIRC FLUID
06-SEP-2005	TRAVEL TIME, ATTEND TAILGATE SAFETY MEETING, REVIEW JSA'S. TBG PRESS 800#, CSG PRESS=200#, BLED PRESS TO FRAC TKS. PMP 100 BBLS 10# BRINE WATER DOWN TBG. RELEASE OFF C/O TOOL, CIRC BACK SIDE W/10# BRINE WATER. PMP 18 BBLS 12# MUD DOWN CSG & 8 BBLS DOWN TBG. LATCH BACK ON TO PKR & RELEASE. TOH LD 133 JTS 2 7/8" DUO-LINE TBG & 1 8' TBG SUB, LD PKR. PU TIH W/PLUG 5 1/2" TS ARROW SET 7.75' X 4.625"OD, PKR 5 1/2" HD 6.00' X 4.625"OD, RETREIVING HEAD 2.35' X 4.5"OD, TBG SUB 2 3/8"OD X 2.15', XO 2 3/8" X 2 3/8" X .5'. PU 80 JTS 2 7/8" WS TO 2500'. SHUT DOWN      PREP TO TEST CSG
07-SEP-2005	TRAVEL TIME, ATTEND TAILGATE SAFETY MEETING, REVIEW JSA'S. TBG PRESS=0#, CSG PRESS=0#, CONTINUE PU 2 7/8" WS. SET RBP @ 4205' & PKR @ 4184' TEST TO 1000# GOOD. TEST ABOVE PKR TO SURFACE TO 500# 15-MINS GOOD. TOH W/TBG & LD TOOLS. PU NEW 4 3/4" BIT, BIT SUB, 2 CHECK VALVES, 40 JTS 2 7/8" TBG (CAVITY) BULLDOG BAILURE PMP, DRAIN SUB, 8' X 2 7/8" PUP JT, W/103 JTS 2 7/8" TBG. TAG FILL 4460' 1' BRIDGE, TAG UP 4629', C/O TO 4654'. TOH W/TBG TO 4216'. SHUT DOWN      PREP TO CONTINUE C/O
08-SEP-2005	TRAVEL TIME, ATTEND TAILGATE SAFETY MEETING, REVIEW JSA'S. PU SWIVEL CONTINUE C/O, TAG @ 4629', C/O TO 4701', (JUNK) BELOW. LD SWIVEL. TOH W/ TBG & LD BAILURE PU 5 1/2" TREATING PKR, XO, SN, 135 JTS 2 7/8" TBG, SET PKR @ 4202'. LOAD & TEST BACK SIDE TO 500# 15-MINS (GOOD). MOVE IN 149 JTS 3 1/2" WS. SHUT DOWN      PRPE TO ACIDIZE
09-SEP-2005	TRAVEL TIME, ATTEND TAILGATE SAFETY MEETING, REVIEW JSA'S. WAITING ON SCHLUMBERGER SAFETY MEETING, MIRU SCHLUMBERGER. ACID PERFS FROM 4281' TO 4686', W/4,000 GALS 15% ACID & 2,000# ROCK SALT, FLUSH W/36 BBLS FRESH WATER. 1ST STAGE ACID 2,000 GALS, 1 ST ROCK SALT 1,000#, 2ND ACID 2,000#, 2ND STAGE ROCK SALT 1,000#, (ST BLOCK 1236# TO 1634# 398# INCREASE). (2ND BLOCK 1382# TO 2055# 683# INCREASE). FLUCH W/36 BBLS FW. ISIP=1741#, 5-MIN SI= 1053# 10-MIN SI=938# 15-MIN SI=865#, AVG RATE=6.0 BPM AVG PRESS=1527# TFTR=167 BBLS. RD SCHLUMBERGER AFTER 1 HOUR SHUT IN FLOW WELL BACK 200 BBLS, TOH LD TREATING PKR. TIH W/4 3/4" BIT TO 2500'. SHUT DOWN      PREP TO WASH ROCK SALT. PRODUCTS: INHIBITOR AID A179 12 LBS, CORROSION INHIBITOR A264 8 GALS, SLURRY GEL B142 10 GALS, ACID HYDROCHLORIC 15% H15 4,000 GALS, DIVERTING AGENT FIXAFRAC J66 2,000#, REDUCING AGENT L63 24 GALS, NON- EMULSIFYING AGENT W53 8 GALS.
12-SEP-2005	TRAVEL TIME, ATTEND TAILGATE MEETING, REVIEW JSA'S. WELL PRESS=1100# ON CSG & 500# ON TBG, OPEN TO FRAC TKS, CIRC WELL W/10# BRINE WATER, 60 BLS DOWN TBG, 100 BBLS, CLOSE CSG PMP 100# DOWN TBG. LOWER 4 3/4" BIT TO TAG @ 4685'. C/O 17' OF FILL TO 4702'. LUNCH, CIRC 70 BBLS FW & 100 BBLS 10# BRINE.

Well ID: QZ6455	Project No: 2	Rig: KEY #323	State: NM	Twn: 18S	Sec: 6	Rng: 35E	
Field: VACUUM	Lease: CVU	Well No: 194	Rpt Date: 03-OCT-2005	Page: 1	of 4		

Date	Daily Operations
	<p>TOW W151 JTS 2 7/8" TBG &amp; 4 3/4" BIT.          TIH WRBP 5 1/2" X 7.15', PKR 5 1/2" X 6.10' W141 JTS, COULDN'T GET RBP TO SET @ 4490'. NO PIPE.          TOH ABOVE PERFS. 4185'.          SHUT DOWN      PREP TO PLUG BACK W12/20 FRAC SAND</p>
13-SEP-2005	<p>TRAVEL TIME, ATTEND TAILGATE SAFETY MEETING, REVIEW JSA          WELL PRESS=0#, TOH WPLUG &amp; PKR.          TIH W2 7/8" TBG OPEN ENDED TO 4686'.          LUNCH, PU &amp; DUMP 50 SX 12/20 BRADY SAND 100# SX,          TOHW26 JTS TO 3878'.          SHUT DOWN 1 HOUR.          TIH TO TAG SAND @ 4416.          CIRC &amp; C/O TO 4490' (PBTD).          TOH W2 7/8" TBG TO 4168'.          SHUT DOWN      PREP TO PU 3 1/2" TBG.</p>
14-SEP-2005	<p>TRAVEL TIME, ATTEND TAILGATE SAFETY MEETING, REVIEW JSA'S.          OPEN WELL (VACUUM), TIH W26 JTS LOWER TBG TO TAG SAND @ 4485'.          PMP 75 BBLS 10# BRINE WATER, TOH W120 JTS 2 7/8" TBG.          CHANGE OUT BOP RAMS 3 1/2", PU 5 1/2" X 7.20' 1X ARROW SET PKR, XO 2 7/8" X 3 1/2" X .51', SN 1.10' 3 1/2" TBG          133 JTS,          SET PKR @ 4182'. LOAD &amp; TEST BACK SIDE 500# GOOD.          SHUT DOWN      PREP TO FRAC</p>
15-SEP-2005	<p>TRAVEL TIME, REVIEW JSA'S.          CHANGE OUT HOSES &amp; SMALL PMP ON RIG.          MIRU SCHLUMBERGER.          SAFETY MEETING, TEST LINES TO 6,000#, STAGE 1 PMP SPACER 49 BBLS WF 130, STAGE 2 PAD 202 BBLS YF130ST,          STAGE #3 1.0PPA 25 BBLS YF130ST 16/30 JORDON, STAGE #4 2.0PPA 39 BBLS YF130ST 16/30 JORDON, STAGE #5          4.0PPA 56 BBLS YF130ST 16/30 JORDON, STAGE #6 6.0PPA 126 BBLS YF130ST 16/30 JORDON, STAGE #7 FLUSH 35          BBLS WF130.          AVG PRESS=3281, MAX PRESS=5424, AVG INJ RATE 20.2BPM MAX RATE 24.1 BPM MAX PROP CONCENTRATION          6.2 PPA. ISIP=3676, 5-MIN SI=1999, 10-MIN SI=1696, 15-MIN SI=1515.          RIG DOWN SCHLIMBERGER. SHUT IN WELL FOR 1 HOUR.          FLOW BACK WELL TO FRAC TKS 1 HPOUR.          SHUT DOWN      PREP TO KILL WELL RELEASE PKR LD 3 1/2"          PRODUCTS: BIOCID B69 6 BLS, SLURRY GEL B142 143 GALS, EZEFLO SURFACTANT F108 22 GALS, BREAKER J218 11          LBS, BREAKER AID LIGUID J318 13 GALS, BREAKER EB-CLEAN (TM) J475 110 LBS, YF 100ST (FREA H BASED          FLUID) 17226 GALS, CLAY STABILIZER L64 44 GALS SAND 16/30 MESH S18 JORDON-UNIMIN 36030 LBS.</p>
16-SEP-2005	<p>TRAVEL TIME, ATTEND TAILGATE SAFETY MEETING, REVIEW JSA'S.          TBG PRESS=500#, BLED PRESS OFF, PMP 8 BBLS 10# WATER DOWN TBG PRESS UP TO 2,000#, RELEASE PRESS, CONTINUE TO          PMP DOWN TBG, (SAND IN TBG).          SHUT DOWN      PREP TO RU COIL TBG</p>
19-SEP-2005	<p>TRAVEL TIME, ATTEND TAILGATE SAFETY MEETING, REVIEW JSA'S.          WELL PRESS=0#, MIRU SCHLUMBERGER CT, CALLAWAY SAFETY AIR TRAILOR, SPS CHOKE MANIFOLD.          TEST BOPS. TEST LINES.          TIH W1 POWER CLEANING NOZZLE 1 1/2" X 14" ON 1 1/2" CT, CLEAN OUT SAND IN 3 1/2" TBG TO 4490, MADE 3 PASSES          THRU 4182' TO 4490', CIRC CLEAN.          TOH WCT TOOLS, ND BOP, RD.</p>
20-SEP-2005	<p>TRAVEL TIME, ATTEND TAILGATE SAFETY MEETING, REVIEW JSA'S.          TBG PRESS=500#, PMP 10# BRINE DOWN TBG, KILL WELL, RELEASE PKR.          DISPLACE HOLE W100 BBLS 10# BRINE, TOH LD 133 JTS 3 1/2" TBG &amp; TREATING PKR.          TIH W4 3/4" BIT &amp; 2 7/8" TBG 143 JTS TAG SAND @ 4440'.          PU SWIVEL, BROKE CIRC.          CLEAN OUT SAND FROM 4440' TO 4480'.          PU CIRC CLEAN, LD SWIVEL. TOH W10 JTS TO 4167'.</p>

Well ID: QZ6455	Project No: 2	Rig: KEY #323	State: NM	Twn: 18S	Sec: 6	Rng: 35E	
Field: VACUUM	Lease: CVU	Well No: 194	Rpt Date: 03-OCT-2005	Page: 2	of 4		

Date	Daily Operations
	SHUT DOWN      PREP TO CONTINUE C/O. NOTE: SAND FALLING IN WHILE C/O.
21-SEP-2005	DROVE CREW TO LOCATION/SAFETY MTG/JSA'S TGB PSI 0, CASING PSI 500, TRIED TO FLOW BACK WELL TO FRAC TANK, WELL FLOWED BACK SAND AND WATER, CUT OUT CONNECTIONS ON FLOW BACK LINE, ORDERED FLOW BACK LINE FROM PRO WIRE LINE PUMPED 80 BBLs 10# BRINE DOWN CASING TO KILL WELL, PUMP 32 BBLs DWN TUBING FOUND TUBING AND BIT PLUGGED TRIED TO UNPLUG BIT, NO SUCCESS, RIG SWAB TO SWAB DWN TUBING SWABBED DWN TUBING AND KICKED WELL OFF. UNPLUGGED TUBING , FOUND 2 PIECES OF METAL AND ONE CEMENT BALL IN THE BIT PUMPED DWN CASING AND TUBING AND KILLED WELL, RD SWAB POOH WITH WORKSTRING AND BIT SUB AND 4 3/4 BIT, FOUND 2 PIECES OF METEL AND CMT IN BIT GIH WITH 130 JTS 2 7/8 WS AND NOTCHED PIN COLLAR @4044' CION, LAY FLOWDOWN LINE AND PREPARE TO CLEAN OUT IN THE A.M.
22-SEP-2005	CREW TRAVEL/SAFETY MTG/JSA'S TBG PSI 160#,CSG PSI 100#, PUMP 110 BBLs 9.0 KF DWN CSG, 10 BBLs DWN TBG , KILLED WELL GIH AND TAG SAND@ 4382', PICK UP POWER SWIVEL AND START CLEAN OUT SAND CLEAN OUT SAND TO 4665, IN THE RETURNS SOME METAL AND CMT CUTTINGS IN THE RETURNS CIRC HOLE CLEAN OF SAND POOH WITH TUBING TO 4044, PREPARE TO GIH AND TAG SAND AND CONTINUE TO CLEAN OUT WELL BORE
23-SEP-2005	DROVE CREW TO LOCATION/SAFETY MTG/JSA'S TUBING PSI 0, CASING PSI 150#, PUMP 50 BBLs 10#BRINE DWN CASING AND TUBING GIH WITH TUBING AND NOTCHED COLLAR AND TAGGED @4447' TRIED TO START CLEANING OUT SAND , COLLAR KEPT TORQUEING UP, ONLY MATERIAL IN THE RETURNS WAS METAL, CIRC HOLE CLEAN LAY DWN SWIVEL AND KILL TUBING WITH 10 BBLs BRINE POOH WITH TUBING AND NOTCHED COLLAR, GIH WITH 43/4 CONBUSTER MILL, 4 3 1/2 DRILL COLLARS AND 2 7/8 WORKSTRING, TAG @4447 DRILL 4' TO 4451', RETURNS MOSTLY RUBBER AND CEMENT, CIRC HOLE CLEAN POOH WITH 20 JTS, CION, CONTINUE TO DRILL ON MONDAY
26-SEP-2005	CREW TRAVEL/SAFETY MTG/JSA'S TUBING PSI 0#, CASING PSI 100#, PUMP 9#BRINE DWN BS, TAG @ 4451', RIG UP POWER SWIVEL FELL OUT OF HARD RUBBER@4454, CIRC HOLE CLEAN POOH WITH CONE BUSTER MILL AND DC AND TUBING, STAND DRILL COLLARS IN THE DERICK GIH WITH NOTCHED PIN COLLAR AND 2 7/8 WS, TAGGED @ 4451, ROTATED THRU AND FELL THRU, TAGGED SAND @4652' CLEANED OUT TO 4657', RECOVERED METAL SHAVING AND FORMATION AND CEMENT , VERY LITTLE SAND, CIRC HOLE CLEAN OF CUTTINGS POOH TO 4042" PREPARE TO GO IN HOLE AND TAG SAND AND CUTTING IN THE A.M.
27-SEP-2005	CREW TRAVEL/SAFETY MTG/JSA'S TBG PSI 25#,CSG 0#, PUMP DWN CSG W/100 BBLs 9# BRINE GIH WITH TUBING AND NOTCHED COLLAR AND TAGGED @4657' CONTINUED CLEANING OUT WELL BY REVERSE METHOD, MADE ONLY 6 FT, CONTINUED DRILLING BY CONVENTION METHOD AND CLEANED OUT TO 4701, RETURNS MOSTLY SAND AND METAL CIRC HOLE CLEAN POOH WITH 20 JTS AND CION, WILL TAG FILL IN THE A.M. IF NO FILL LAY DOWN WS
28-SEP-2005	CREW TRAVEL/SAFETY MTG/JSA'S CIRC HOLE WITH 9# BRINE TUBING PSI 100, CASING PSI 150 PSI, GIH TAG @4701, NO FILL ENTRY OVERNITE PREPARE RIG TO LAY DOWN WORKSTRING START LAYING DOWN WS ON PIPE RACKS, LAYED DWN 70 JOINTS LEAVING KILLSTRING IN THE HOLE START TAKING DOWN DRILL RETURN LINE AND CLEAN LOCATION. PREPARE TO RUN FIBERLINE INJECTION TUBING IN THE A.M.

Well ID: QZ6455	Project No: 2	Rig: KEY #323	State: NM	Twn: 18S	Sec: 6	Rng: 35E	
Field: VACUUM		Lease: CVU		Well No: 194	Rpt Date: 03-OCT-2005	Page: 3	of 4

Date Daily Operations

29-SEP-2005 CREW TRAVEL/SAFETY MTG/JSA'S  
TBG PSI 30 # CSG PSI 100#, PUMPED 100 BBLS 10# DWN CASING AND 40 BBLS DWN TUBING  
LAY DOWN KILL STRING  
GIH W/ 5 1/2 NICKLE PLATED ARROWSET 1-X W/ T2 ON/OFF TOOLW/ 1.87 PROFILE W/ PUMP OUT PLUG, 2 3/8X 2 7/8 XOVER  
ON 136 JTS 2 7/8 FIBERLINE INJECTION TUBING  
SET PACKER @4197'  
GET OFF ON/OFF TOOL AND CIRC HOLE WITH 80 BBLS PACKER FLUID  
LATCH ON TO PACKER AND ND BOP  
NU WELLHEAD, PREPARE TO RUN CASING TEST THE A.M. OCD HAS BEEN NOTIFIED

30-SEP-2005 TRAVEL TIME, ATTEND TAILGATE SAFETY MEETING, REVIEW JSA'S.  
CHANGE OUT 2 2" BLOCK VALVES ON CO2 WELL HEAD, NU CO2 WELL HEAD.  
TEST CO2 WELL HEAD TO 3,000#, PMP OUT PLUG, CHART & TEST CSG FOR OCD TO 500# (GOOD). TIE IN INJECTION LINE TO  
WELL HEAD.  
RIG DOWN PULLING UNIT & REVERSE UNIT. CLEAN LOCATION.  
MOVE RIG TO VGWU #46H  
FINAL REPORT

*Original Chart & Copy of Chart  
Attached*

Well ID: QZ6455	Project No: 2	Rig: KEY #323	State: NM	Twn: 18S	Sec: 6	Rng: 35E	
Field: VACUUM	Lease: CVU	Well No: 194	Rpt Date: 03-OCT-2005	Page: 4	of 4		

6 AM

5

4

3

2

1

11 MIDNIGHT

10

9

8

7

6 PM

5

4

3

2

1

NOON

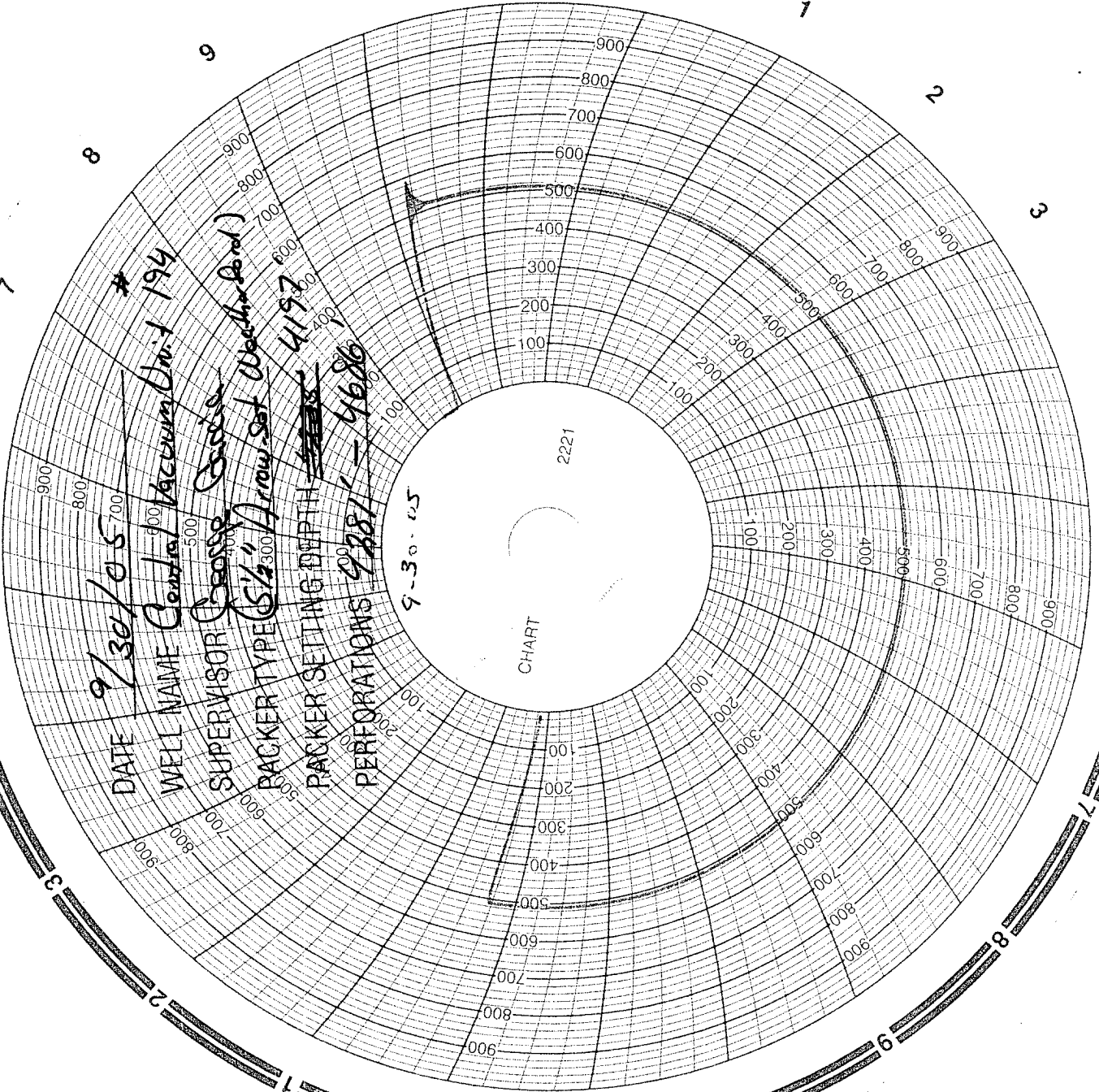
11

10

9

8

7



#

4197

4197

4197

4197

4197

4197

4197

4197

4197

4197

4197

4197

4197

4197

4197

4197

4197

4197

4197

4197

4197

4197

4197

4197

4197

DATE

9/30/05

WELL NAME

Central Vacuum Unit 194

SUPERVISOR

George Jordan

PACKER TYPE

(5 1/2" Arrow Set Weather Band)

PACKER SETTING DEPTH

4197

PERFORATIONS

2221

9-30-05

9-30-05

Champion USA Inc.

CIV. L. No. 194

CSY. 5 1/2

136 JTS 2 3/8

5 1/2 Nickel Plate Arrow Set 1-X PKR w/arrow-68

P.B.T.D. 4706.00

P.B.T.D. 4706.00

P.B.T.D. 4706.00

T.B.Y. 4175.12

Tick.