

State of New Mexico  
Energy, Minerals & Natural Resources

Form C-101  
May 27, 2004

District I  
1625 N. French Dr., Hobbs, NM 88240  
District II  
1301 W. Grand Avenue, Artesia, NM 88210  
District III  
1000 Rio Brazos Rd., Aztec, NM 87410  
District IV  
1220 S. St. Francis Dr., Santa Fe, NM 87505

Oil Conservation Division  
1220 S. St. Francis Dr.  
Santa Fe, NM 87505

Submit to appropriate District Office

☒ AMENDED REPORT

**APPLICATION FOR PERMIT TO DRILL, RE-ENTER, DEEPEN, PLUGBACK, OR ADD A ZONE**

<sup>1</sup> Operator Name and Address Marathon Oil Company P.O. Box 3487 Houston, Tx. 77253		<sup>2</sup> OGRID Number 14021
<sup>4</sup> Property Code 006442	<sup>5</sup> Property Name J. L. MUNCY	<sup>3</sup> API Number 30- 025 - 36966
<sup>9</sup> Proposed Pool 1 Lang. Mattix 7 Rivers Q. Grayburg		<sup>10</sup> Proposed Pool 2 Wildcat - San Andres

<sup>7</sup>Surface Location

UL or lot no.	Section	Township	Range	Lot. Idn	Feet from the	North/South Line	Feet from the	East/West line	County
J	24	22-S	37-E		1980'	South	1980'	EAST	LEA

<sup>8</sup>Proposed Bottom Hole Location If Different From Surface

UL or lot no.	Section	Township	Range	Lot. Idn	Feet from the	North/South Line	Feet from the	East/West line	County

Additional Well Location

<sup>11</sup> Work Type Code N	<sup>12</sup> Well Type Code O	<sup>13</sup> Cable/Rotary ROTARY	<sup>14</sup> Lease Type Code P	<sup>15</sup> Ground Level Elevation 3313'
<sup>16</sup> Multiple Yes	<sup>17</sup> Proposed Depth 5000'	<sup>18</sup> Formation San Andres	<sup>19</sup> Contractor UNKNOWN	<sup>20</sup> Spud Date ASAP
Depth to ground water > 50'		Distance from nearest fresh water well		Distance from nearest surface water
Pit: Liner: Synthetic <input checked="" type="checkbox"/> 12 mils thick Clay <input type="checkbox"/> Pit Volume _____ bbls Drilling Method: Closed-Loop System <input type="checkbox"/> Fresh Water <input checked="" type="checkbox"/> Brine <input checked="" type="checkbox"/> Diesel/Oil-based <input type="checkbox"/> Gas/Air <input type="checkbox"/>				

<sup>21</sup>Proposed Casing and Cement Program

Hole Size	Casing Size	Casing weight/foot	Setting Depth	Slab of Cement	Estimated TOC
11"	8 5/8"	24	400	250	SURFACE
7 7/8"	5 1/2"	15.5	5000'	1100	SURFACE
Permit Expires 1 Year From Approval Date Unless Drilling Underway					

<sup>22</sup> Describe the proposed program. If this application is to DEEPEN or PLUG BACK, give the data on the present productive zone and proposed new productive zone. Describe the blowout prevention program, if any. Use additional sheets if necessary.

Proposed BOPE: Surface hole: 13 5/8", 3m, dual ram, rotating head.  
 Production Hole: 11", 3m, dual ram, rotating head.  
 Mud program: Fresh water, 0'-400'. 10 ppg. Brine-400-5000' Gel as needed. All casing shall be run & cemented according to OCD Rule #107. All BOPE shall be installed and tested according to OCD Rules #109 & #114.

<sup>23</sup> I hereby certify that the information given above is true and complete to the best of my knowledge and belief. I further certify that the drilling pit will be constructed according to NMOCD guidelines ☒ a general permit ☐, or an (attached) alternative OCD-approved plan ☐.  
 Signature: *MfMick*

Printed name: Mike Mick

Title: Adv. Sr. Eng. Tech

E-mail Address: mfmick@marathonoil.com

Date: 10-12-05

Phone: 713-296-3254

OIL CONSERVATION DIVISION

Approved by:

Title:

Approval Date: OCT 14 2005

Expiration Date:

Conditions of Approval:

Attached ☐

## DISTRICT I

1625 N. FRENCH DR., HOBBES, NM 88240

## State of New Mexico

Energy, Minerals and Natural Resources Department

Form C-102

## DISTRICT II

1301 W. GRAND AVENUE, ARTESIA, NM 88210

## OIL CONSERVATION DIVISION

1220 SOUTH ST. FRANCIS DR.

Santa Fe, New Mexico 87505

Revised JUNE 10, 2003

Submit to Appropriate District Office

State Lease - 4 Copies

Fee Lease - 3 Copies

## DISTRICT III

1000 Rio Brazos Rd., Aztec, NM 87410

## DISTRICT IV

1220 S. ST. FRANCIS DR., SANTA FE, NM 87505

## WELL LOCATION AND ACREAGE DEDICATION PLAT

☐ AMENDED REPORT

API Number <b>30-025-36966</b>	Pool Code <b>3 7240</b>	Pool Name <b>LANG. MATTIX 7 RIVERS Q. GRAYBURG</b>
Property Code <b>6442</b>	Property Name <b>MUNCY</b>	Well Number <b>12</b>
OGRID No. <b>14021</b>	Operator Name <b>MARATHON OIL COMPANY</b>	Elevation <b>3313'</b>

## Surface Location

UL or lot No.	Section	Township	Range	Lot Idn	Feet from the	North/South line	Feet from the	East/West line	County
<b>J</b>	<b>24</b>	<b>22-S</b>	<b>37-E</b>		<b>1980</b>	<b>SOUTH</b>	<b>1980</b>	<b>EAST</b>	<b>LEA</b>

## Bottom Hole Location If Different From Surface

UL or lot No.	Section	Township	Range	Lot Idn	Feet from the	North/South line	Feet from the	East/West line	County

Dedicated Acres	Joint or Infill	Consolidation Code	Order No.
<b>40</b>			

NO ALLOWABLE WILL BE ASSIGNED TO THIS COMPLETION UNTIL ALL INTERESTS HAVE BEEN CONSOLIDATED  
OR A NON-STANDARD UNIT HAS BEEN APPROVED BY THE DIVISION

<p>GEODETIC COORDINATES NAD 27 NME</p> <p>Y=502460.6 N X=876427.7 E</p> <p>LAT.=32°22'31.74" N LONG.=103°06'50.67" W</p>	<p>1980'</p>		<p>1980'</p>
	<p>OPERATOR CERTIFICATION</p> <p>I hereby certify the the information contained herein is true and complete to the best of my knowledge and belief.</p> <p><i>Frank M. Kugh</i> Signature</p> <p><b>FRANK M. KUGH</b> Printed Name</p> <p><i>Reg. Comp. Rep. III</i> Title</p> <p><b>10/12/05</b> Date</p>		
	<p>SURVEYOR CERTIFICATION</p> <p>I hereby certify that the well location shown on this plat was plotted from field notes of actual surveys made by me or under my supervision, and that the same is true and correct to the best of my belief.</p> <p><b>SEPTEMBER 8, 2005</b></p> <p>Date Surveyed</p> <p>Signature &amp; Seal of Professional Surveyor</p> <p><i>GARY EDISON</i> GARY EDISON 05.11.1308 CERTIFICATE No. GARY EDISON 12641</p>		
	<p>LA</p>		

## State of New Mexico

Energy, Minerals and Natural Resources Department

## DISTRICT I

1625 N. FRENCH DR., HOBBES, NM 88240

## DISTRICT II

1301 W. GRAND AVENUE, ARTESIA, NM 88210

## DISTRICT III

1000 Rio Brazos Rd., Aztec, NM 87410

## DISTRICT IV

1220 S. ST. FRANCIS DR., SANTA FE, NM 87505

## OIL CONSERVATION DIVISION

1220 SOUTH ST. FRANCIS DR.  
Santa Fe, New Mexico 87505

Form C-102

Revised JUNE 10, 2003

Submit to Appropriate District Office

State Lease - 4 Copies

Fee Lease - 3 Copies

## WELL LOCATION AND ACREAGE DEDICATION PLAT

☐ AMENDED REPORT

API Number <b>30-025-36966</b>	Pool Code	Pool Name <b>WILDCAT</b>	Well Number <b>12</b>
Property Code <b>6442</b>	Property Name <b>MUNCY</b>		Elevation <b>3313'</b>
OGRID No. <b>14021</b>	Operator Name <b>MARATHON OIL COMPANY</b>		

## Surface Location

UL or lot No.	Section	Township	Range	Lot Idn	Feet from the	North/South line	Feet from the	East/West line	County
J	24	22-S	37-E		1980	SOUTH	1980	EAST	LEA

## Bottom Hole Location If Different From Surface

UL or lot No.	Section	Township	Range	Lot Idn	Feet from the	North/South line	Feet from the	East/West line	County

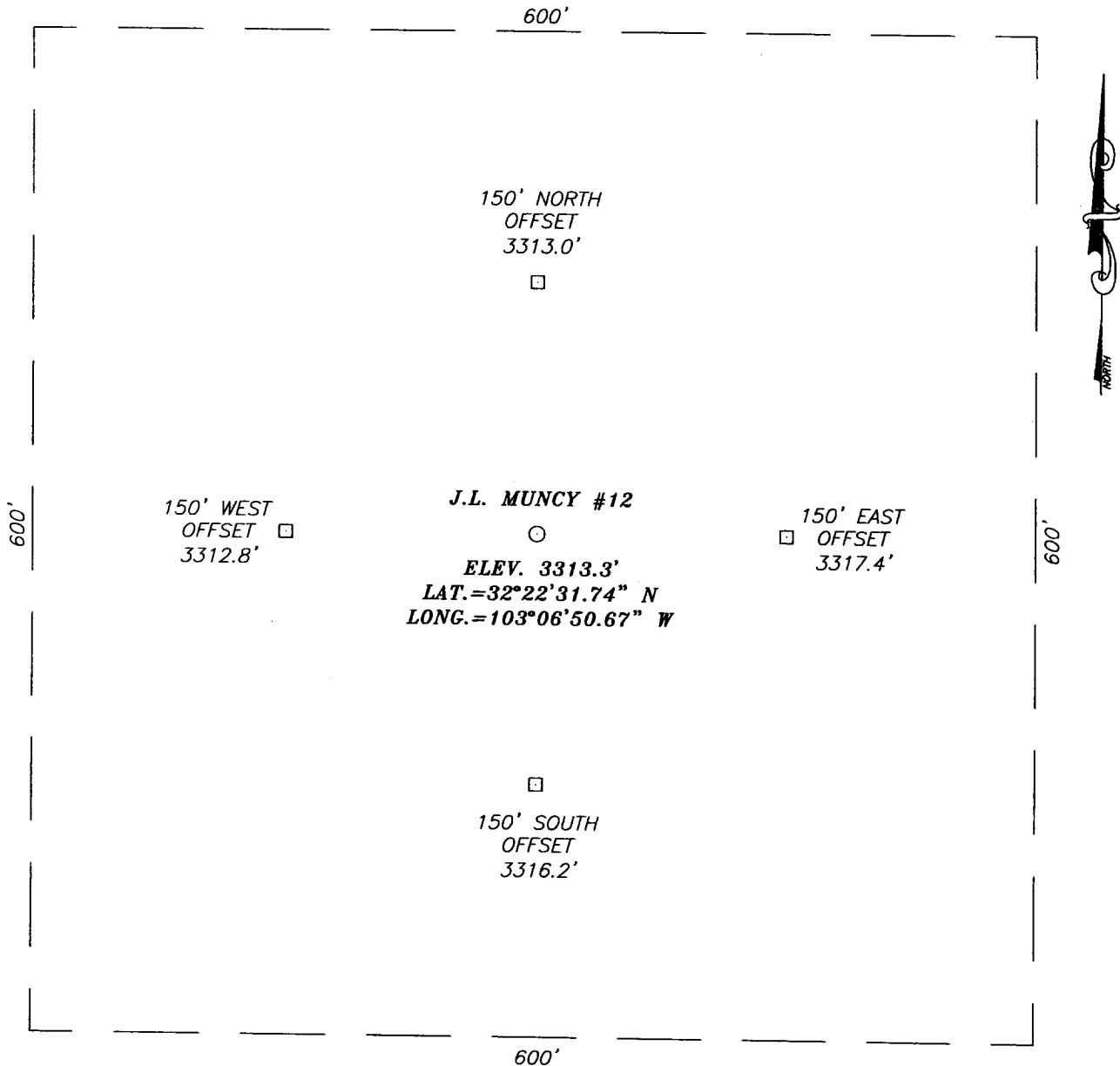
Dedicated Acres <b>40</b>	Joint or Infill	Consolidation Code	Order No.
------------------------------	-----------------	--------------------	-----------

NO ALLOWABLE WILL BE ASSIGNED TO THIS COMPLETION UNTIL ALL INTERESTS HAVE BEEN CONSOLIDATED  
OR A NON-STANDARD UNIT HAS BEEN APPROVED BY THE DIVISION

<p>GEODETIC COORDINATES NAD 27 NME</p> <p>Y=502460.6 N X=876427.7 E</p> <p>LAT.=32°22'31.74" N LONG.=103°06'50.67" W</p>	<p>1980'</p>	
	<p>1980'</p>	
	<p>1980'</p>	
	<p>1980'</p>	

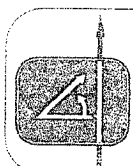
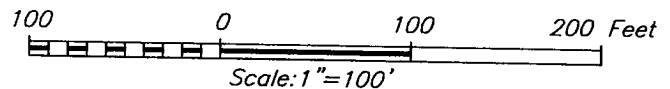
<p>OPERATOR CERTIFICATION</p> <p>I hereby certify the the information contained herein is true and complete to the best of my knowledge and belief.</p> <p><i>Frank M. Krugh</i> Signature</p> <p><b>FRANK M. KRUGH</b> Printed Name</p> <p><i>Reg. Comp. Rep. III</i> Title</p> <p><b>10/12/05</b> Date</p>	
<p>SURVEYOR CERTIFICATION</p> <p>I hereby certify that the well location shown on this plat was plotted from field notes of actual surveys made by me or under my supervision, and that the same is true and correct to the best of my belief.</p> <p>SEPTEMBER 8, 2005</p> <p>Date Surveyed</p> <p>Signature &amp; Seal to Professional Surveyor</p> <p><i>GARY E. ELLISON</i> GARY E. ELLISON NEW MEXICO 05.11.1308 CERTIFICATE No. GARY ELLISON 12641</p>	

**SECTION 24, TOWNSHIP 22 SOUTH, RANGE 37 EAST, N.M.P.M.,**  
LEA COUNTY, NEW MEXICO



**DIRECTIONS TO LOCATION**

FROM THE INTERSECTION OF DRINKARD RD. & VIVIAN RD, GO EAST ON VIVIAN RD. FOR APPROX. 0.94 MILES TO A CALICHE ROAD ON THE LEFT. TURN LEFT (NORTH) AND GO APPROX. 0.3 MILES TO A CALICHE ROAD ON THE LEFT. TURN LEFT (WEST) AND GO APPROX. 0.4 MILES. PROPOSED LOCATION IS APPROX. 400' NORTH ACROSS PASTURE.



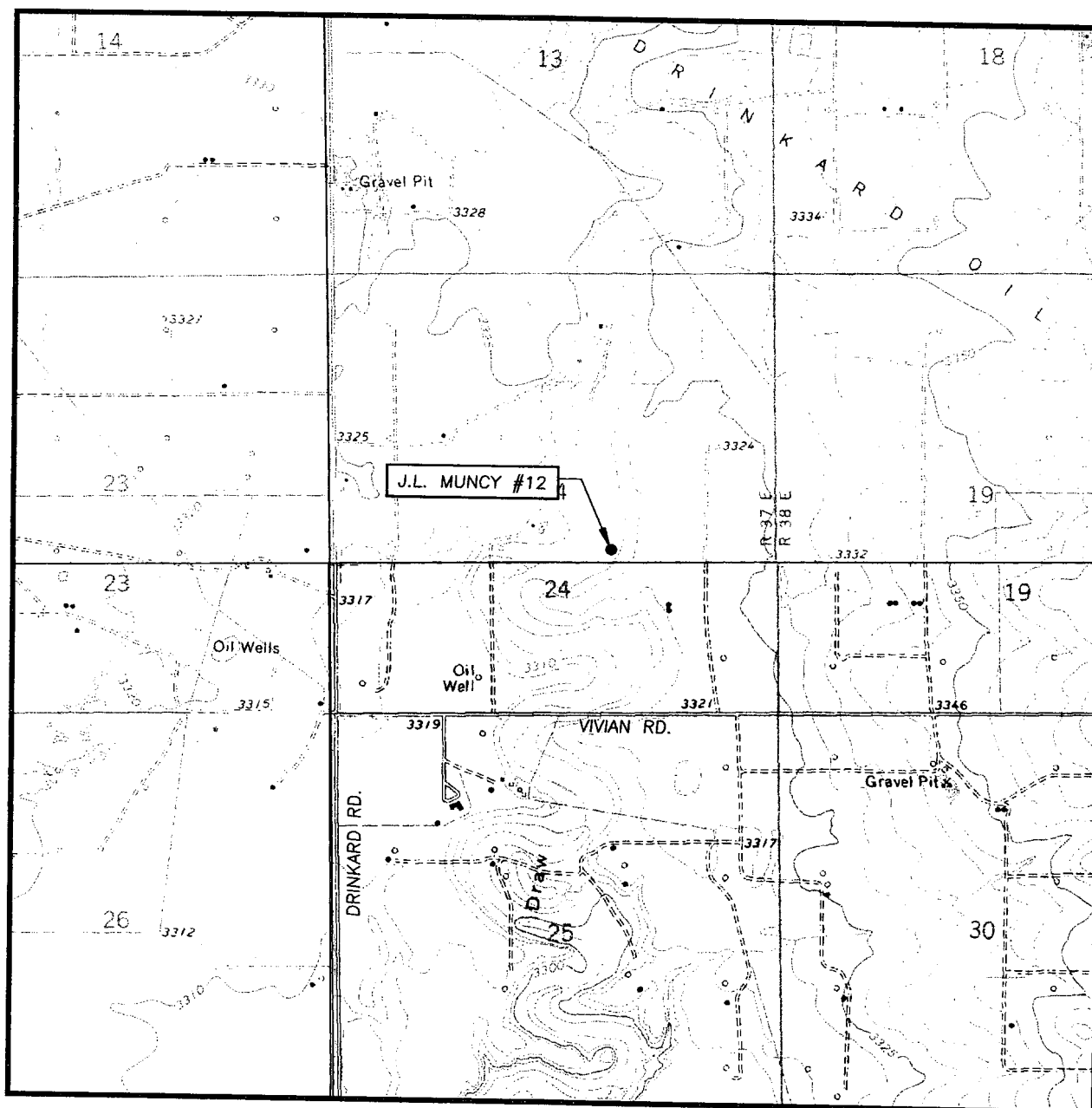
PROVIDING SURVEYING SERVICES  
SINCE 1946  
**JOHN WEST SURVEYING COMPANY**  
412 N. DAL PASO  
HOBBS, N.M. 88240  
(505) 383-3117

**MARATHON OIL COMPANY**

J.L. MUNCY #12 WELL  
LOCATED 1980 FEET FROM THE SOUTH LINE  
AND 1980 FEET FROM THE EAST LINE OF SECTION 24,  
TOWNSHIP 22 SOUTH, RANGE 37 EAST, N.M.P.M.,  
LEA COUNTY, NEW MEXICO.

Survey Date: 10/13/04		Sheet 1 of 1 Sheets	
W.O. Number: 04.11.1343		Dr By: J.R.	Rev 1:N/A
Date: 10/27/04	Disk: CD#10	04111343	Scale: 1"=100'

# LOCATION VERIFICATION MAP



SCALE: 1" = 2000'

CONTOUR INTERVAL:

EUNICE SE, N.M. - 5'

EUNICE, N.M. - 10'

EUNICE NE, N.M. - 5'

RATTLESNAKE CANYON, N.M. - 10'

SEC. 24 TWP. 22-S RGE. 37-E

SURVEY N.M.P.M.

COUNTY LEA

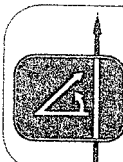
DESCRIPTION 1980' FSL & 1980' FEL

ELEVATION 3313'

OPERATOR MARATHON OIL COMPANY

LEASE J.L. MUNCY

U.S.G.S. TOPOGRAPHIC MAP  
EUNICE NE, N.M.

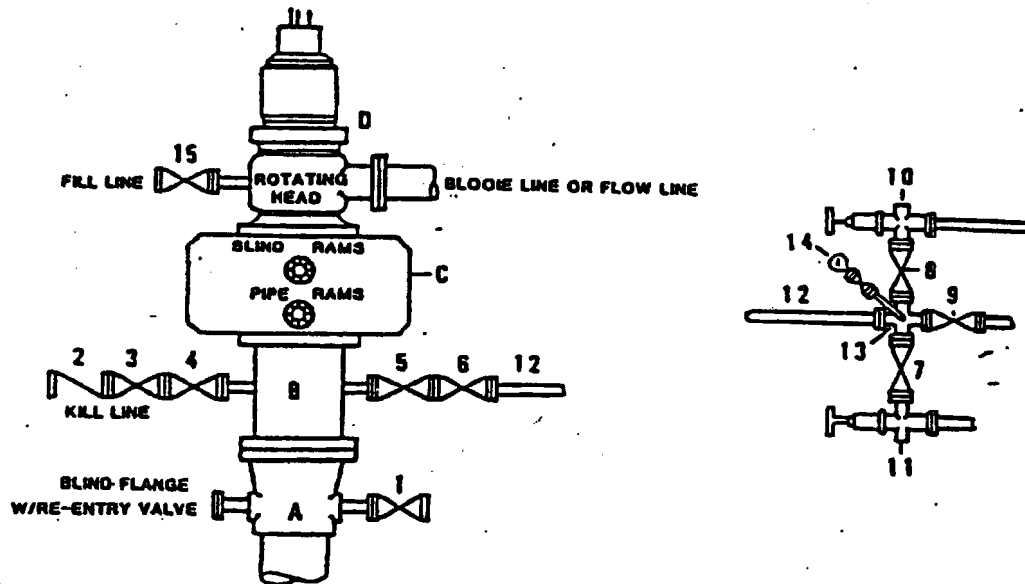


PROVIDING SURVEYING SERVICES  
SINCE 1946

**JOHN WEST SURVEYING COMPANY**

412 N. DAL PASO  
HOBBS, N.M. 88240  
(505) 383-3117

## DRILLING CONTROL



### DRILLING CONTROL

#### MATERIAL LIST - CONDITION II - B

- |            |   |
|------------|---|
| A          | Wellhead  |
| B          | 3000# W.P. drilling spool with a 2" minimum flanged outlet for kill line and 3" minimum flanged outlet for choke line.  |
| C          | 3000# W.P. Dual ram type preventer, hydraulic operated with 1" steel, 3000# W.P. control lines (where sub-structure height is adequate, 2 - 3000# W.P. single ram type preventers may be utilized). |
| D          | Rotating Head with fill up outlet and extended Bloome Line.   |
| 1,2,4,7,8, | 2" minimum 3000# W.P. flanged full opening steel gate valve, or Halliburton Lo Torc Plug valve.   |
| 2          | 2" minimum 3000# W.P. back pressure valve.  |
| 5,6,9      | 3" minimum 3000# W.P. flanged full opening steel gate valve, or Halliburton Lo Torc Plug valve.   |
| 12         | 3" minimum schedule 80, Grade "B", seamless line pipe.  |
| 13         | 2" minimum x 3" minimum 3000# W.P. flanged cross.   |
| 10,11      | 2" minimum 3000# W.P. adjustable choke bodies.  |
| 14         | Cameron Mud Gauge or equivalent (location optional in choke line).  |
| 15         | 2" minimum 3000# W.P. flanged or threaded full opening steel gate valve, or Halliburton Lo Torc Plug valve.   |

District I  
1625 N. French Dr., Hobbs, NM 88240  
District II  
1301 W. Grand Avenue, Artesia, NM 88210  
District III  
1000 Rio Brazos Road, Aztec, NM 87410  
District IV  
1220 S. St. Francis Dr., Santa Fe, NM 87505

State of New Mexico  
Energy Minerals and Natural Resources

Form C-144  
March 12, 2004

Oil Conservation Division  
1220 South St. Francis Dr.  
Santa Fe, NM 87505

For drilling and production facilities, submit to appropriate NMOCD District Office.  
For downstream facilities, submit to Santa Fe office

**Pit or Below-Grade Tank Registration or Closure**

Is pit or below-grade tank covered by a "general plan"? Yes ☐ No ☒

Type of action: Registration of a pit or below-grade tank ☐ Closure of a pit or below-grade tank ☐

Operator: Marathon Oil Co. Telephone: 713-296-3254 mail address: mfmick@marathonoil.co

Address: P.O. Box 3487 Houston, Tx. 77253

Facility or well name: J.L. Muncy #12 API #: 30-025-36966 U/L or Qtr/Qtr NWSE Sec 24 T 22S R 37E

County: LEA Latitude \_\_\_\_\_ Longitude \_\_\_\_\_ NAD: 1927 ☐ 1983 ☐ Surface Owner Federal ☐ State ☐ Private ☒ Indian ☐

**Pit**

Type: Drilling ☒ Production ☐ Disposal ☐

Workover ☐ Emergency ☐

Lined ☒ Unlined ☐

Liner type: Synthetic ☒ Thickness 12 mil Clay ☐ Volume 2000 bbl

**Below-grade tank**

Volume: \_\_\_\_\_ bbl Type of fluid: \_\_\_\_\_

Construction material: \_\_\_\_\_

Double-walled, with leak detection? Yes ☐ If not, explain why not. \_\_\_\_\_

Depth to ground water (vertical distance from bottom of pit to seasonal high water elevation of ground water.)

Less than 50 feet	(20 points)
50 feet or more, but less than 100 feet	(10 points)
100 feet or more <b>X</b>	( 0 points)

Wellhead protection area: (Less than 200 feet from a private domestic water source, or less than 1000 feet from all other water sources.)

Yes	(20 points)
No <b>X</b>	( 0 points)

Distance to surface water: (horizontal distance to all wetlands, playas, irrigation canals, ditches, and perennial and ephemeral watercourses.)

Less than 200 feet	(20 points)
200 feet or more, but less than 1000 feet	(10 points)
1000 feet or more <b>X</b>	( 0 points)

**Ranking Score (Total Points)**

**If this is a pit closure:** (1) attach a diagram of the facility showing the pit's relationship to other equipment and tanks. (2) Indicate disposal location:

onsite ☒ offsite ☐ If offsite, name of facility \_\_\_\_\_ (3) Attach a general description of remedial action taken including remediation start date and end date. (4) Groundwater encountered: No ☐ Yes ☐ If yes, show depth below ground surface \_\_\_\_\_ ft. and attach sample results. (5) Attach soil sample results and a diagram of sample locations and excavations.

I hereby certify that the information above is true and complete to the best of my knowledge and belief. I further certify that the above-described pit or below-grade tank has been/will be constructed or closed according to NMOCD guidelines ☒, a general permit ☐, or an (attached) alternative OCD-approved plan ☐.

Date: 11-20-04  
Printed Name/Title Mike Mick- Adv. Sr. Eng. Tech Signature Mfmick

Your certification and NMOCD approval of this application/closure does not relieve the operator of liability should the contents of the pit or tank contaminate ground water or otherwise endanger public health or the environment. Nor does it relieve the operator of its responsibility for compliance with any other federal, state, or local laws and/or regulations.

Approval:

Date: OCT 14 2005

Printed Name/Title \_\_\_\_\_ Signature PAUL F. KAUTZ  
**PETROLEUM ENGINEER**

