

HOBBS OCD

DISTRICT I  
1825 N. French Dr., Hobbs, NM 88240

DISTRICT II  
811 South First, Artesia, NM 88210

DISTRICT III  
1000 Rio Brazos Rd., Aztec, NM 87410

DISTRICT IV  
2040 South Pacheco, Santa Fe, NM 87505

NOV 26 2013

State of New Mexico  
Energy, Minerals and Natural Resources Department

Form C-102  
Revised August 1, 2011

Submit one copy to Appropriate  
District Office

RECEIVED

OIL CONSERVATION DIVISION

1220 South St. Francis Dr.  
Santa Fe, New Mexico 87505

☐ AMENDED REPORT

WELL LOCATION AND ACREAGE DEDICATION PLAT

API Number	Pool Code 96803	Pool Name TRISTE DRAW BONE SPRING
Property Code 38694 40257	Property Name COX FEDERAL 35	Well Number 2H
OGRID No. 162028	Operator Name EMERGEN RESOURCES CORPORATION	Elevation 3629.4

Surface Location

UL or lot No.	Section	Township	Range	Lot Idn	Feet from the	North/South line	Feet from the	East/West line	County
0	35	23-S	32-E		200	South	2240	East	LEA

Bottom Hole Location If Different From Surface

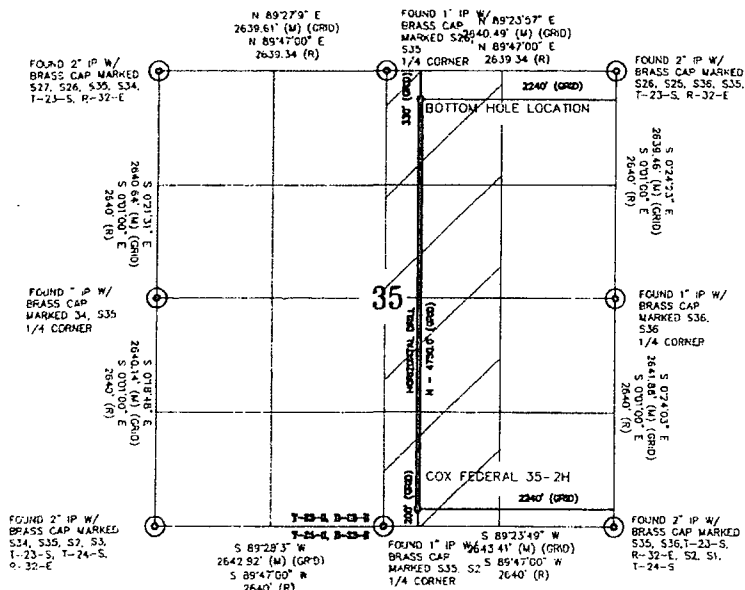
UL or lot No.	Section	Township	Range	Lot Idn	Feet from the	North/South line	Feet from the	East/West line	County
B	35	23-S	32-E		330	North	2240	East	LEA
Dedicated Acres 160	Joint or Infill	Consolidation Code	Order No.						

NO ALLOWABLE WILL BE ASSIGNED TO THIS COMPLETION UNTIL ALL INTERESTS HAVE BEEN CONSOLIDATED  
OR A NON-STANDARD UNIT HAS BEEN APPROVED BY THE DIVISION

COX FEDERAL 35-2H  
LAT: 37° 15' 38.8"  
LONG: 103° 38' 58.800"  
DATUM (NAD 1983)

SECTION 35  
T-23-S, R-32-E

BOTTOM HOLE LOCATION  
LAT: 37° 16' 03.019"  
LONG: 103° 38' 58.832"  
DATUM (NAD 1983)



NOTES:

1. COORDINATES AND BEARINGS ARE BASED ON LAMBERT CONICAL PROJECTION OF THE STATE PLANE COORDINATE SYSTEM NAD 83, CORRS 96, TEXAS CENTRAL ZONE WITH A CONVERGENCE ANGLE OF 0.37067599 AND DISTANCES ARE OF GRID VALUE WITH A CENTRAL COMBINED SCALE FACTOR OF 0.99978903. THE POSITIONAL TOLERANCE OF THIS SURVEY EXCEEDS THE REQUIREMENTS FOR A CONSTRUCTION SURVEY.

2. SCALE 1" = 2000'

OPERATOR CERTIFICATION

I hereby certify that the information contained herein is true and complete to the best of my knowledge and belief, and that this organization either owns a working interest or unleased mineral interest in the land including the proposed bottom hole location or has a right to drill this well at this location pursuant to a contract with an owner of such a mineral or working interest or to a voluntary pooling agreement or compulsory pooling order heretofore entered by the division.

*Nathan Smith* 7/22/13  
Signature Date

Nathan Smith  
Printed Name  
7/22/13  
Date

SURVEYOR CERTIFICATION

I hereby certify that the well location shown on this plat was plotted from field notes of actual surveys made by me or under my supervision and that the same is true and correct to the best of my belief.

Date Surveyed  
Signature & Seal of Professional Surveyor  
No. 3959  
WILSON D. WATSON, JR.

Certificate No. WILSON D. WATSON JR.  
P.L.S. #3959  
WATSON PROFESSIONAL GROUP INC

DEC 02 2013 P.M.