

District I
1625 N. French Dr., Hobbs, NM 88240
Phone: (575) 393-6161 Fax: (575) 393-0720

District II
311 S. First St., Artesia, NM 88210
Phone: (575) 748-1283 Fax: (575) 748-9720

District III
1090 Rio Brazos Road, Aztec, NM 87410
Phone: (505) 334-6178 Fax: (505) 334-6170

District IV
1220 S. St. Francis Dr., Santa Fe, NM 87505
Phone: (505) 476-3460 Fax: (505) 476-3462

State of New Mexico
Energy, Minerals & Natural Resources Department
OIL CONSERVATION DIVISION
1220 South St. Francis Dr.
Santa Fe, NM 87505

Form C-102
Revised August 1, 2011
Submit one copy to appropriate
District Office

☒ AMENDED REPORT

RECEIVED

WELL LOCATION AND ACREAGE DEDICATION PLAT

| | | |
|--|--|--|
| ¹ API Number 30-025-40976 | ² Pool Code 96674 | ³ Pool Name TRIPLE X; BONE SPRING, WEST |
| ⁴ Property Code 39680 | ⁵ Property Name MOGI 9 STATE COM | |
| ⁷ OGRID No. 15363 | ⁸ Operator Name MURCHISON OIL & GAS, INC. | ⁶ Well Number 2H |
| | | ⁹ Elevation 3615.6 |

¹⁰ Surface Location

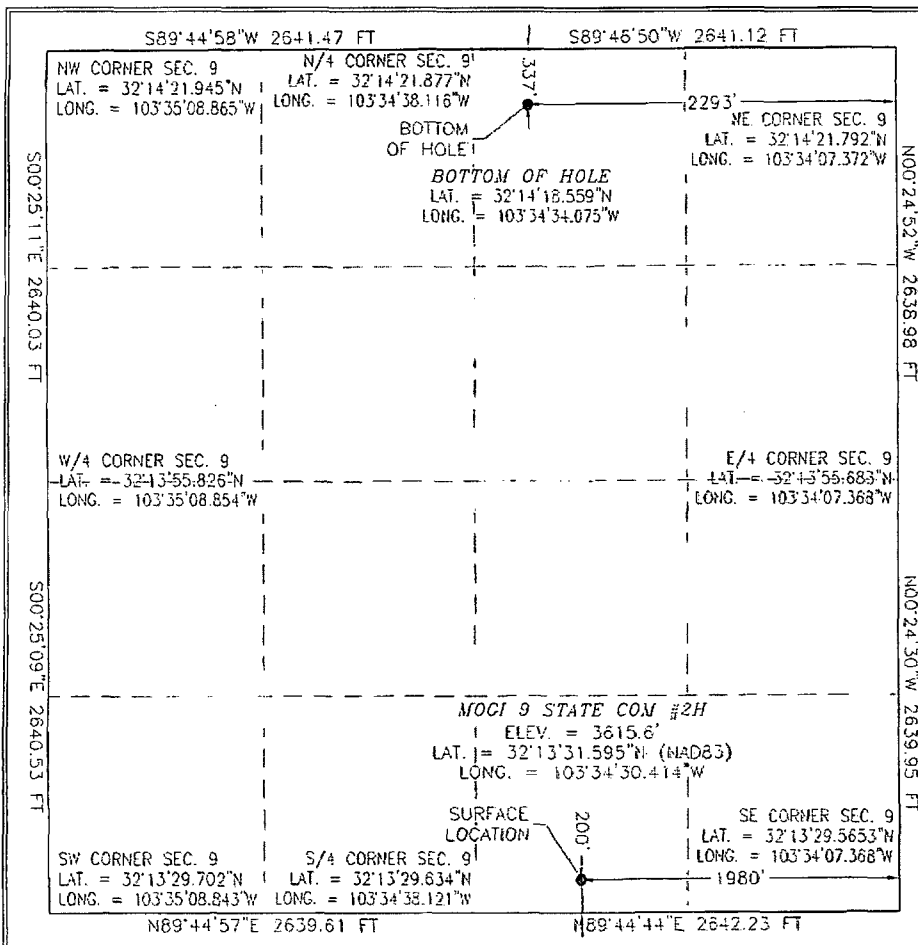
| UL or lot no. | Section | Township | Range | Lot Idn | Feet from the | North/South line | Feet from the | East/West line | County |
|---------------|----------|-------------|-------------|---------|---------------|------------------|---------------|----------------|------------|
| O | 9 | 24 S | 33 E | | 200 | SOUTH | 1980 | EAST | LEA |

¹¹ Bottom Hole Location If Different From Surface

| UL or lot no. | Section | Township | Range | Lot Idn | Feet from the | North/South line | Feet from the | East/West line | County |
|---------------|----------|-------------|-------------|---------|---------------|------------------|---------------|----------------|------------|
| B | 9 | 24 S | 33 E | | 337 | NORTH | 2293 | EAST | LEA |

| | | | |
|---|-------------------------------|----------------------------------|-------------------------|
| ¹² Dedicated Acres 160 | ¹³ Joint or Infill | ¹⁴ Consolidation Code | ¹⁵ Order No. |
|---|-------------------------------|----------------------------------|-------------------------|

No allowable will be assigned to this completion until all interests have been consolidated or a non-standard unit has been approved by the division.



¹⁶ OPERATOR CERTIFICATION

I hereby certify that the information contained herein is true and complete to the best of my knowledge and belief, and that this organization either owns a working interest or unleased mineral interest in the land including the proposed bottom hole location or has a right to drill this well at this location pursuant to a contract with an owner of such a mineral or working interest or to a voluntary pooling agreement or a compulsory pooling order heretofore entered in the division.

Signature: *Michael S. Daugherty* Date: **9/16/13**

Printed Name: **Michael S. Daugherty**

E-mail Address: **mdaugherty@jdmii.com**

¹⁸ SURVEYOR CERTIFICATION

I hereby certify that the well location shown on this plat was plotted from field notes of actual surveys made by me or under my supervision, and that the same is true and correct to the best of my belief.

SEPTEMBER 16 2013 NEW MEXICO

Date of Survey: **SEPTEMBER 16 2013**

Signature and Seal of Professional Surveyor: *[Signature]*

Certificate Number: **12797**

Surveyor: **FLORENTIA A. RANILLO, PLS 12797**

Survey No.: **14830**

DEC 03 2013