

DISTRICT I
1625 N. French Dr., Hobbs, NM 88240
Phone: (575) 393-6161 Fax: (575) 393-0720

DISTRICT II
811 S. First St., Artesia, NM 88210
Phone: (505) 334-6178 Fax: (505) 748-9720

DISTRICT III
1000 Rio Brazos Road, Aztec, NM 87410
Phone: (505) 334-6178 Fax: (505) 334-6170

DISTRICT IV
1220 S. St. Francis Dr., Santa Fe, NM 87505
Phone: (505) 476-3460 Fax: (505) 476-3462

State of New Mexico
Minerals & Natural Resources Department
OIL CONSERVATION DIVISION
1220 South St. Francis Dr.
Santa Fe, New Mexico 87505

Form C-102
Revised August 1, 2011
Submit one copy to appropriate
District Office

DEC 17 2013

AMENDED REPORT

RECEIVED
WELL LOCATION AND ACREAGE DEDICATION PLAT

API Number 30-015-025-41518	Pool Code 96100 96802	Pro Name Delaware Dell Canyon - Cherry Canyon
Property Code 40299	Property Name GOLD COAST 26 FEDERAL SWD	Well Number 1
OGRID No. 229137	Operator Name COG OPERATING, LLC	Elevation 3566'

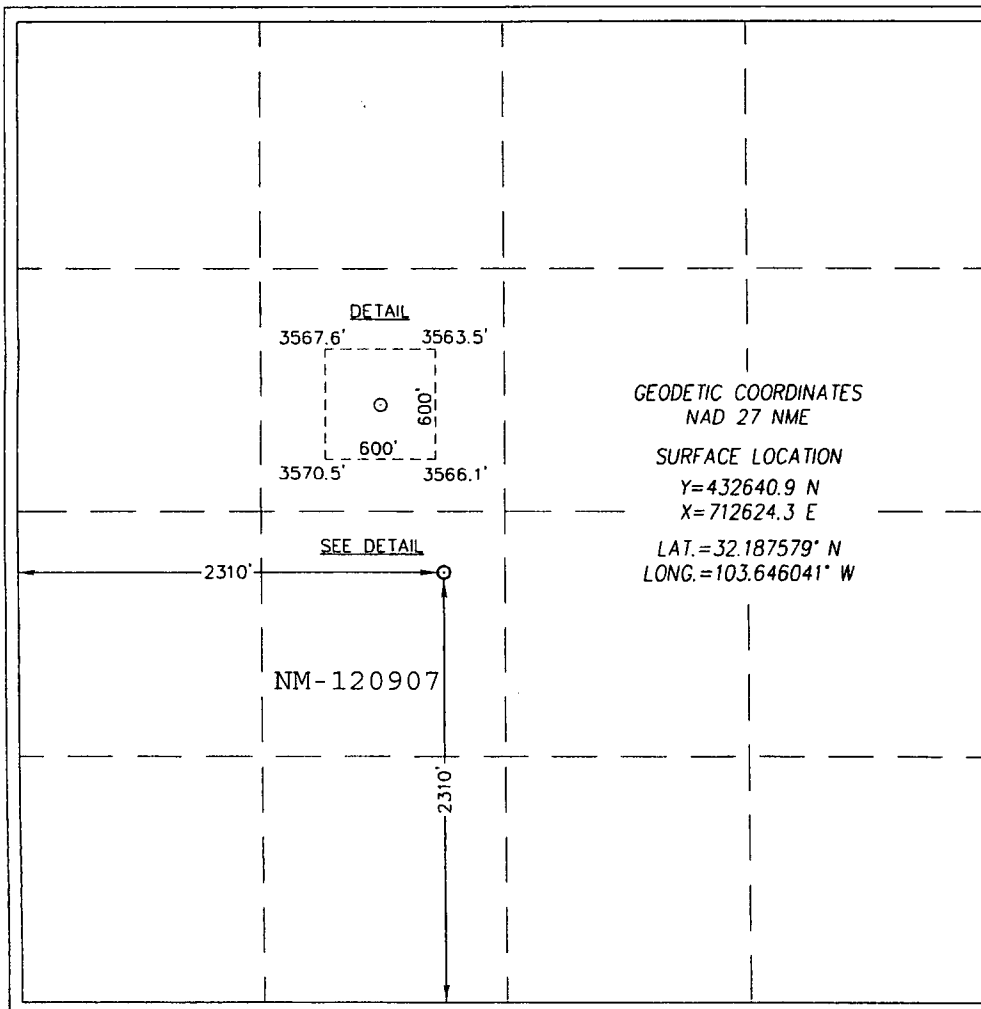
Surface Location

UL or lot No.	Section	Township	Range	Lot Idn	Feet from the	North/South line	Feet from the	East/West line	County
K	26	24-S	32-E		2310	SOUTH	2310	WEST	LEA

Bottom Hole Location If Different From Surface

UL or lot No.	Section	Township	Range	Lot Idn	Feet from the	North/South line	Feet from the	East/West line	County
Dedicated Acres	Joint or Infill	Consolidation Code	Order No.						
N/A			SWD - 1391						

NO ALLOWABLE WILL BE ASSIGNED TO THIS COMPLETION UNTIL ALL INTERESTS HAVE BEEN CONSOLIDATED OR A NON-STANDARD UNIT HAS BEEN APPROVED BY THE DIVISION



OPERATOR CERTIFICATION

I hereby certify that the information herein is true and complete to the best of my knowledge and belief, and that this organization either owns a working interest or unleased mineral interest in the land including the proposed bottom hole location or has a right to drill this well at this location pursuant to a contract with an owner of such mineral or working interest, or to a voluntary pooling agreement or a compulsory pooling order heretofore entered by the division.

Signature: Melanie Parker Date: 7/2/13
 Printed Name: Melanie Parker
 E-mail Address: mparker@concho.com

SURVEYOR CERTIFICATION

I hereby certify that the well location shown on this plat was plotted from field notes of actual surveys made by me or under my supervision, and that the same is true and correct to the best of my belief.

OCTOBER 4, 2012

Date of Survey: _____
 Signature & Seal of Professional Surveyor: _____

Certificate Number: 3239 Gary J. Eidson 12641
 Professional: Ronald J. Eidson 3239

AF JWSC W.O.: 12.11.1648

DEC 30 2013 PM