

## Wellbore Diagram

Lease & Well No. State A A/C 2 # 64 SWD  
Field Name Jalmat  
Location 1250' FNL 1250' FEL; Unit A, Sec. 08, T22S, R36E

Status TA'd  
County & State Lea County, NM  
API No. 30-025-28273  
Pool Name Jalmat: Tansill Yates Seven Rivers

### Well Information

Spud: 8/13/1983 Ground Elevation: 3,564' D.F. Elevation: \_\_\_\_\_  
Completed: 10/18/83 KB Elevation: \_\_\_\_\_ Total Depth: 3,900'

### Pipe Data

Surface						
Hole size	Depth	Size (OD)	Weight	Grade	Sx. Cmt	Comments
12-1/4"	579'	8-5/8"	24.0#		375 sx	circulated
Production						
Hole size	Depth	Size (OD)	Weight	Grade	Sx. Cmt	Comments
7-7/8"	3,900'	5-1/2"	17.0#		1,100 sx	TOC @ surface

### Downhole Tubulars (Top to Bttm):

2-3/8" cement lined tubing, on/off tool, Otis perma-latch packer

### Well History

10/1/1983 Perf 3840-3876, 1 SPF, 37 holes. Acdz w/ 3000 gals 15%.  
Perf 3792-3832, 1 SPF, 41 holes. Acdz w/ 2500 gals 15%.  
Perf 3756-3788, 1 SPF, 33 holes. Acdz w/ 2000 gals 15%.  
10/26/1983 IP: 3 BO, 23 MCF, 64 BW  
9/8/1984 POH w/ rods & pump. RIH w/ pkr and convert to injector.  
12/23/1991 Earliest recrd of Temporary Abandonment status. Says TA'd with Pkr @ 3713'  
1/22/2009 Most recent passing pressure test. Extension of 5 years granted.

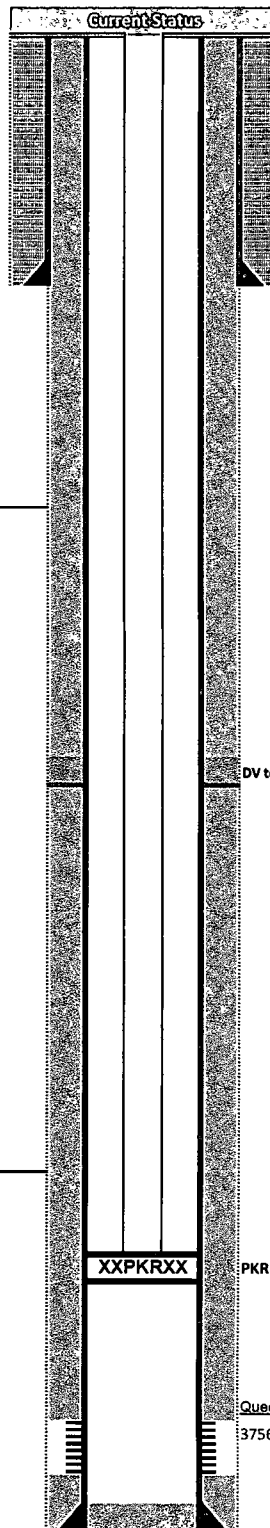
TA expiration expires 1/26/2014

**POTENTIAL** Injection well for Queen waterflood?

HOBBS OCD

FEB 03 2014

RECEIVED



### OCD Tops (MD)

Tansill	2,890'
Yates	3,137'
7 Rivers	3,321'
Queen	3,719'
San Andres	
Glorieta	
Bone Spring	
Bone SS	
Abo	
Wolfcamp	
Strawn	
Atoka	

### Procedures

1  
2  
3  
4  
5  
6  
7  
8  
9  
10

FEB 03 2014