

Wellbore Diagram

Lease & Well No. **State A A/C 1 # 119**
Field Name **Jalmat**
Location **1295' FSL 1295' FEL; Unit P, Sec. 03, T23S, R36E**

Status **TA'd**
County & State **Lea County, NM**
API No. **30-025-28514**
Pool Name **Jalmat: Tansill Yates Seven Rivers**

Well Information

Spud: **3/6/1984** Ground Elevation: **3,462'** D.F. Elevation: _____
Completed: **4/15/84** KB Elevation: **3,474'** Total Depth: **3,820'**

Pipe Data

Surface						
Hole size	Depth	Size (OD)	Weight	Grade	Sx. Cmt	Comments
12-1/4"	426'	8-5/8"	24.0#		275 sx	CTS
Production						
Hole size	Depth	Size (OD)	Weight	Grade	Sx. Cmt	Comments
7-7/8"	3,820'	5-1/2"	14.0#		900 sx	TOC @ 400' (temp survey)

Downhole Tubulars (Top to Bttm):	
2-3/8" cement lined tubing, on/off tool, Otis perma-latch packer	

Well History

3/31/1984 Perf 3732-42, 1 SPF, 11 holes. Acdz w/1000 gals 15%. Perf 3722-32 and 3692-3722, total 42 holes. Acdz w/ 4000 gals 15%. Swab tested 38 BO in 8 hrs. Perf 3637-3668, 1 SPF, 32 holes. Acdz w/ 3000 gals 15%. Swab tested 8 BO in 6 hrs. Well originally planned for inj, but set up for production while facilities installed.

4/19/1984 24 hr test - 37 BO x 86 BW x 35 MCF.

8/16/1984 L/D production equipment, RIH w/ injection string (pkr @ 3546'). Convert to injection. Injection rate @ 1BPM and 0#.

9/29/1992 Earliest record of Temporary Abandonment status. Says TA'd with Pkr @ 3546'

6/12/2013 Most recent passing pressure test. Extension of 6 months granted.

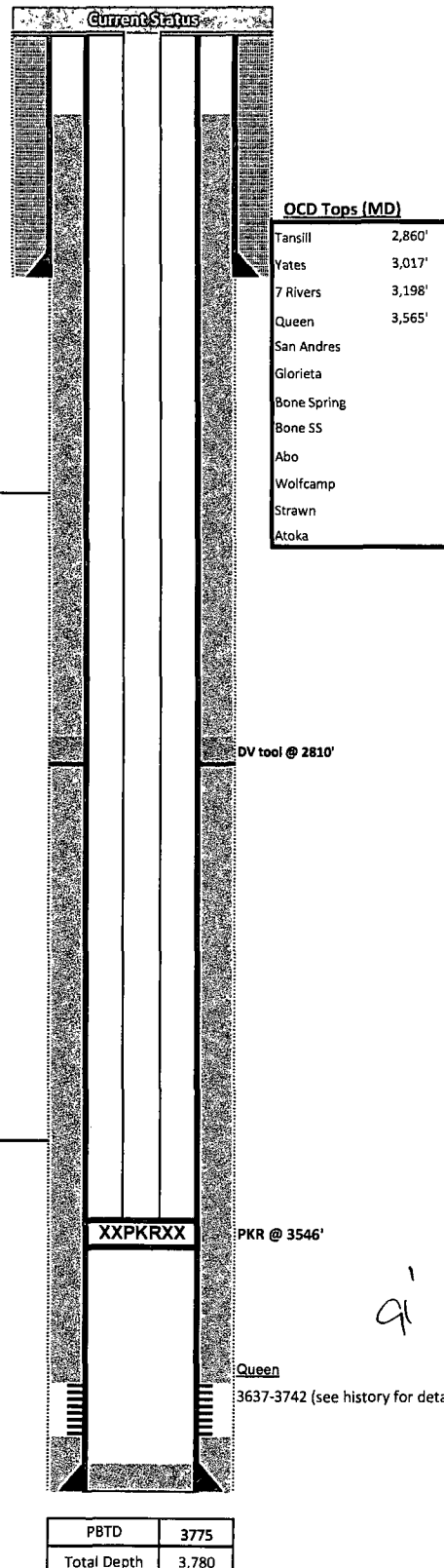
TA extension expires 12/16/2013.

POTENTIAL Injection well for Queen waterflood?

HOBBS OCD

FEB 03 2014

RECEIVED



Procedures

1
2
3
4
5
6
7
8
9
10

FEB 03 2014