

Submit 1 Copy To Appropriate District Office
District I - (575) 393-6161
1625 N. French Dr., Hobbs, NM 88240
District II - (575) 748-1283
811 S. First St., Artesia, NM 88210
District III - (505) 334-6178
1000 Rio Brazos Rd., Aztec, NM 87410
District IV - (505) 476-3460
1220 S. St. Francis Dr., Santa Fe, NM 87505

State of New Mexico
Energy, Minerals and Natural Resources

Form C-103
Revised July 18, 2013

HOBBS OCD
FEB 18 2014

OIL CONSERVATION DIVISION
1220 South St. Francis Dr.
Santa Fe, NM 87505

SUNDRY NOTED REPORTS ON WELLS (DO NOT USE THIS FORM FOR PROPOSALS TO DRILL OR TO DEEPEN OR PLUG BACK TO A DIFFERENT RESERVOIR. USE "APPLICATION FOR PERMIT" (FORM C-101) FOR SUCH PROPOSALS.)		WELL API NO. 30-025-08488
1. Type of Well: Oil Well <input checked="" type="checkbox"/> Gas Well <input type="checkbox"/> Other <input type="checkbox"/>		5. Indicate Type of Lease STATE <input checked="" type="checkbox"/> FEE <input type="checkbox"/>
2. Name of Operator Kaiser-Francis Oil Company		6. State Oil & Gas Lease No. E-5896
3. Address of Operator P.O. Box 21468, Tulsa, OK 74121-1468		7. Lease Name or Unit Agreement Name Bell Lake Unit
4. Well Location Unit Letter N 330 feet from the South line and 2970 feet from the East line Section 31 Township 23S Range 34E NMPM Lea County		8. Well Number X 1 ✓
11. Elevation (Show whether DR, RKB, RT, GR, etc.) 3816' GR		9. OGRID Number 012361
		10. Pool name or Wildcat Bell Lake (Bone Springs)

12. Check Appropriate Box to Indicate Nature of Notice, Report or Other Data

NOTICE OF INTENTION TO:

PERFORM REMEDIAL WORK ☐ PLUG AND ABANDON ☒
TEMPORARILY ABANDON ☐ CHANGE PLANS ☐
PULL OR ALTER CASING ☐ MULTIPLE COMPL ☐
DOWNHOLE COMMINGLE ☐
CLOSED-LOOP SYSTEM ☐
OTHER: ☐

SUBSEQUENT REPORT OF:

REMEDIAL WORK ☐ ALTERING CASING ☐
COMMENCE DRILLING OPNS. ☐ P AND A ☐
CASING/CEMENT JOB ☐
OTHER: ☐

13. Describe proposed or completed operations. (Clearly state all pertinent details, and give pertinent dates, including estimated date of starting any proposed work). SEE RULE 19.15.7.14 NMAC. For Multiple Completions: Attach wellbore diagram of proposed completion or recompletion.

1. MIRU WL. ND WH, NU BOP. Run GR and tag PBTD. TIH w/cement retainer on tbg and set @ 5900'. Load annulus and pressure to 300#. Cement with 1050 ft3 of light cement, followed by 75 ft3 of neat cement. Displace cmt with plug mud. Sting out of retainer and leave final .5 bbl cmt on top of retainer.

30' cmt

2. POOH to 2300' and spot 34 ft3 cmt from 2300'-2200'. WOC and tag.

2610-2510

3. POOH to 1325' and spot 34 ft3 neat cmt from 1330'-1180'. WOC and tag.

4. POOH. Spot 22 ft3 surface cmt plug from 100'-4'. Verify cement to surface in all annuluses; fill w/cement as needed.

Cut off csg below GL and weld on cap. Restore location. Estimated plug date: 3/01/14.

MLF BETWEEN
PLUGS.

Spud Date:

Rig Release Date:

I hereby certify that the information above is true and complete to the best of my knowledge and belief.

SIGNATURE

Teresa Nixon

TITLE Regulatory Compliance Analyst

DATE 02/14/2014

Type or print name

Teresa Nixon

E-mail address: TeresaMi@kfoc.net

PHONE: 918-491-4591

For State Use Only

APPROVED BY:

Mark Brown

TITLE Compliance Officer

DATE

Conditions of Approval (if any):

OIL CONSERVATION DIVISION - Hobbs office Must Be Notified
24 hours prior to the beginning of Plugging Operations.

FEB 27 2014

Kaiser-Francis Oil Company

South Bell Lake Unit #1-A

330' FSL, 2970' FEL
Section 31, T23S, R33E
Lea County, New Mexico
API # 30-025-08488

WELL DATA

TD: 15,120'
PBTD: 6680' - CIBP @ 6700' w/ 20' of cement on top

Elevation:
GL Elev. = 3617'
DF Elev. = 3633'

Surface Casing: 13-3/8" 48# @ 1254' cemented to surf. w/ 1250 sx

Intermediate Csg: 9-5/8" 40# @ 6000' cemented to surface w/ 3145 sx

Intermediate Csg: 7" 23/26/29/32# @ 12,545' cmted w/ 1000 sx (TOC @ 8024' by temperature survey)

Production Liner: 4-1/2" FJ from 15,072' to 12,069' – abandoned

P&A Plugs:
CIBP @ 13,555' w/ 100' cmt on top (TOC = 13,455')
CIBP @ 13,100' w/ 90' cmt on top (TOC = 13,010')
CIBP @ 11,875' w/ 10 sx on top (est TOC = 11,825')
CIBP @ 6700' w/ 20' cmt on top (TOC = 6680')

PROCEDURE

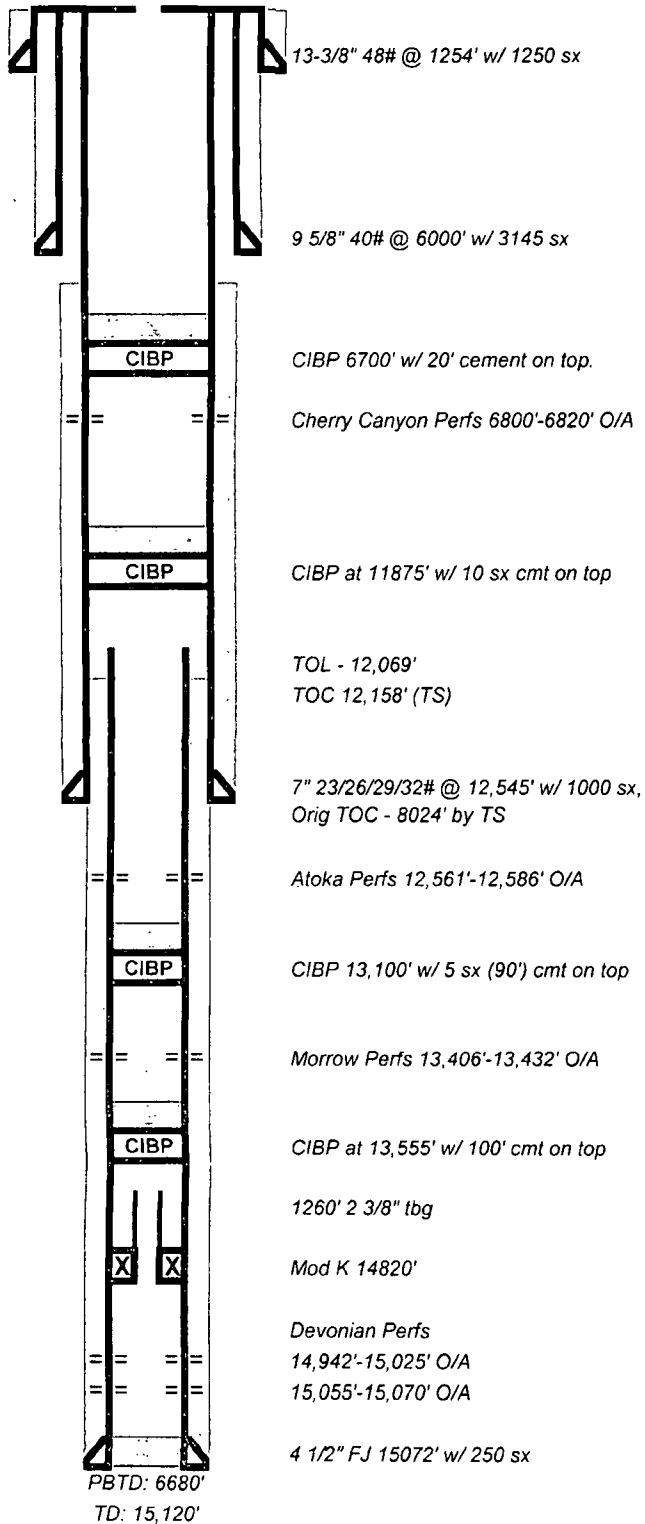
- 1) Notify State of New Mexico 24 hrs prior to commencing. Prior to rigging up, notify all parties on location that no junk is to be disposed of down the wellbore for any reason. Verify that wellhead valve is accessible for 9-5/8"x7" csg annulus, and 13-3/8"x9-5/8" annulus and check pressures on both. Check pressure on 7". Blow down any with pressure and monitor.
- 2) ND WH, NU BOP. MIRU WL. Run GR and tag PBTD. Report results to Tulsa if PBTD varies by more than 50' from reported depth of 6680'. Run CBL from 6200' to until free pipe is seen (pull to at least 5800'). Report results to Tulsa / perf depths may be adjusted if cement is above 6050'. RIH w/ perf gun and shoot circulation holes in csg @ 6050'. Pump down csg and establish circulation with FW.

CIRC
M.L.F.

- 3) Take delivery of 5900' of 2-7/8" work string. Verify that cmt retainer will set in csg range from 23# to 32#. TIH w/ cement retainer on tbg and set @ 5900'. Load annulus and pressure to 300# - monitor throughout cmt job. Establish rate down tbg w/ FW taking returns out 7"x9-5/8" annulus, and cement well with 1050 ft3 of light cement, followed by 75 ft3 of neat cmt. Displace cmt w/ plug mud. If good cmt returns are seen at the surface, shut in 7"x9-5/8" w/ 1.5 bbls cmt remaining in tbg sqz 1.0 bbl away (max pressure 500# above final circ pressure). Sting out of retainer and leave final .5 bbl cmt on top of retainer.
- 4) POOH to 2300' and spot 23 ft3 neat cmt from ~~2300'-2200'~~ *2610'-2510'*. WOC and verify cement depth by tagging.
- 5) POOH to 1325' and spot 34 ft3 neat cmt from 1330'-1180'. WOC and verify cement depth by tagging.
- 6) POOH. Spot 22 ft3 surface cmt plug from 100' - 4'. Verify cement to surface in all annuluses and fill with cmt as needed. Cut off csg below GL and weld on cap. Restore location.

Kaiser-Francis

Location: 330' FSL, 2970' FEL, (SE-SW) Sec 31,
T23S, R34E
County: Lea
State: New Mexico
Elevation: DF - 3633'



South Bell Lake #1A

API - 30-025-08488

Spud Date: 6/19/54

Completed: 4/55

Diagram: Updated - 2/10/14

Work History:

SPUD: 06/19/54 - Drilled by Continental Oil Co. Atoka Core #1 - 12,551'-601'. DST #1 - 12,545'-601', 1390 mcfd, 30 bwph. Core #2 - 12,601'-656'. DST #2 - 12,638'-656', recov 30' mud, tr gas, no oil or wtr. Core #3 - 12,656'-699'. Whipstocked @ 14,785', no other details...

COMPLETION - 4/55: Perf Devonian: 15,055'-70' (60 holes), flwd 6165 mcfd, 24 bwph. Test pkr was set above liner top, notes indicate concerns about poss wtr from Atoka. Perf 14942'-15,025' (332 holes). Az 14,942'-15,025' w/ 2000 gal - AOF 15.5 MMCFD. Reports indicate 15,055'-70' may have been plugged off. Recov 3.5 BCF from Devonian.

08/67: TA well. - Cut off tbg at 13,560'. Mod K Pkr 14820'. Set CIBP @ 13,555' w/ 100' cmt on top. PBTD 13,455'. Fill w/8.5# mud.

03/68: Perf Morrow 13,406'-13,432'. Recov 2.3 BCF from Morrow, wtrd out.

12/81: Spent weeks recovering junk. Set CIBP at 13,100' w/ 5 sx cmt on top. (PBTD 13,010'). PFL ATOKA: 12561, 63, 71, 73, 76, 84, 86. Az w/ 2000 gal 15% NEFE. Recov 227 BW, no gas. SI 3/13/81.

04/89: Perf: Cherry Canyon: 6800, 3, 5, 9, 11, 13, 15, 20 [6800'-6820' O/A]. Frac w/14284 g gel 30% CO2 + 20/40 sd

05/06: Set CIBP @ 6700' and dump 20' cmt on top. Ran MIT.

02/12: Ran MIT. Tested to 500#.