

HOBBS OCD

## DISTRICT I

1625 N. French Dr., Hobbs, NM 88240

Phone (575) 393-8161 Fax: (575) 393-0720

## DISTRICT II

811 S. First St., Artesia, NM 88210

Phone (575) 748-1283 Fax: (575) 748-9720

## DISTRICT III

1000 Rio Brazos Rd., Aztec, NM 87401

Phone (505) 334-6178 Fax: (505) 334-8174

## DISTRICT IV

1220 S. St. Francis Dr., Santa Fe, NM 87505

Phone (505) 476-3460 Fax: (505) 476-3482

State of New Mexico  
Energy, Minerals and Natural Resources Department

Form C-102

Revised August 1, 2011

Submit one copy to appropriate  
District Office

## OIL CONSERVATION DIVISION

1220 South St. Francis Dr.

Santa Fe, New Mexico 87505

## WELL LOCATION AND ACREAGE DEDICATION PLAT

☐ AMENDED REPORT

API Number 30-025-40576	Pool Code 5535	Pool Name Berry; Bone Spring, North
Property Code 39221	Property Name September Grass BSG State Com	Well Number 1H
OGRID No. 025575	Operator Name YATES PETROLEUM CORPORATION	Elevation 3,714' GR

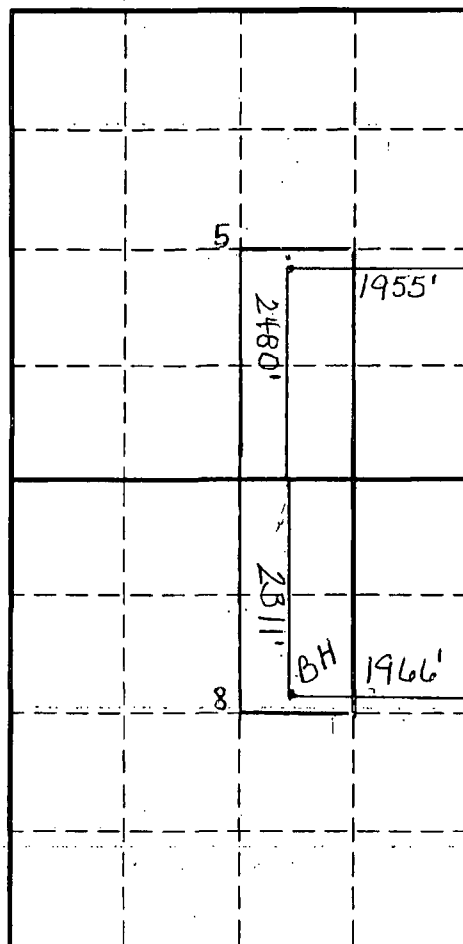
## Surface Location

UL or lot No.	Section	Township	Range	Lot Idn	Feet from the	North/South line	Feet from the	East/West line	County
J	5	21S	34E		2480	South	1955	East	Lea

## Bottom Hole Location If Different From Surface

UL or lot No.	Section	Township	Range	Lot Idn	Feet from the	North/South line	Feet from the	East/West line	County
G	8	21S	34E		2311 2308	North	1966 1925	East	Lea
Dedicated Acres 160	Joint or Infill	Consolidation Code	Order No.						

NO ALLOWABLE WILL BE ASSIGNED TO THIS COMPLETION UNTIL ALL INTERESTS HAVE BEEN CONSOLIDATED  
OR A NON-STANDARD UNIT HAS BEEN APPROVED BY THE DIVISION



## OPERATOR CERTIFICATION

I hereby certify that the information... contained herein is true and complete to the best of my knowledge and belief, and that this organization either owns a working interest or unleased mineral interest in the land including the proposed bottom hole location or has a right to drill this well at this location pursuant to a contract with an owner of such a mineral or working interest, or to a voluntary pooling agreement or a compulsory pooling order heretofore entered by the division.

*Laura Watts* 1/8/14  
Signature Date

Laura Watts

Printed Name

laura@yatespetroleum.com

Email Address

## SURVEYOR CERTIFICATION

I hereby certify that the well location shown on this plat was plotted from field notes of actual surveys made by me or under my supervision and that the same is true and correct to the best of my belief.

Date Surveyed

Signature & Seal of  
Professional Surveyor

0' 1000' 2000' 3000' 4000'  
SCALE: 1" = 2000'  
WO Num.:

MAR 25 2014