

HOBBS OCD

District I
1625 N. French Dr., Hobbs, NM 88201
Phone: (575) 393-6161 Fax: (575) 393-6120
District II
511 S. First St., Artesia, NM 88210
Phone: (575) 748-1283 Fax: (575) 748-9720
District III
1000 Rio Brazos Road, Aztec, NM 87410
Phone: (505) 334-6178 Fax: (505) 334-6170
District IV
1220 S. St. Francis Dr., Santa Fe, NM 87505
Phone: (505) 476-3460 Fax: (505) 476-3462

APR 22 2014

RECEIVED

State of New Mexico
Energy, Minerals & Natural Resources Department
OIL CONSERVATION DIVISION
1220 South St. Francis Dr.
Santa Fe, NM 87505

Form C-102
Revised August 1, 2011
Submit one copy to appropriate
District Office

☐ AMENDED REPORT

WELL LOCATION AND ACREAGE DEDICATION PLAT

¹ API Number 30-025-41807	² Pool Code 5690	³ Pool Name BILBREY BASIN, BONE SPRING
⁴ Property Code 717143	⁵ Property Name BILBREY 33 FED COM	
⁷ OGRID No. 6137	⁸ Operator Name DEVON ENERGY PRODUCTION COMPANY, L.P.	
		⁶ Well Number 4H
		⁹ Elevation 3729.1

¹⁰ Surface Location

UL or lot no.	Section	Township	Range	Lot Idn	Feet from the	North/South line	Feet from the	East/West line	County
I	33	21 S	32 E		2600	SOUTH	1300	EAST	LEA

¹¹ Bottom Hole Location If Different From Surface

UL or lot no.	Section	Township	Range	Lot Idn	Feet from the	North/South line	Feet from the	East/West line	County
A	28	21 S	32 E		330	NORTH	660	EAST	LEA

¹² Dedicated Acres 240	¹³ Joint or Infill	¹⁴ Consolidation Code	¹⁵ Order No.
---	-------------------------------	----------------------------------	-------------------------

No allowable will be assigned to this completion until all interests have been consolidated or a non-standard unit has been approved by the division.

<p>NW CORNER SEC. 28 LAT. = 32.4569393°N LONG. = 103.6882813°W NMSP EAST (FT) N = 530566.55 E = 740299.70</p> <p>W/4 CORNER SEC. 28 LAT. = 32.4496894°N LONG. = 103.6882898°W NMSP EAST (FT) N = 527928.98 E = 740313.03</p> <p>SECTION CORNER LAT. = 32.4424274°N LONG. = 103.6882910°W NMSP EAST (FT) N = 525287.05 E = 740328.62</p> <p>W/4 CORNER SEC. 33 LAT. = 32.4351698°N LONG. = 103.6882970°W NMSP EAST (FT) N = 522846.69 E = 740342.69</p> <p>SW CORNER SEC. 33 LAT. = 32.4279074°N LONG. = 103.6883007°W NMSP EAST (FT) N = 520004.58 E = 740357.53</p>		<p>N/4 CORNER SEC. 28 LAT. = 32.4569769°N LONG. = 103.6797333°W NMSP EAST (FT) N = 530566.27 E = 742936.26</p> <p>NOTE: LATITUDE AND LONGITUDE COORDINATES ARE SHOWN USING THE NORTH AMERICAN DATUM OF 1983 (NAD83). LISTED NEW MEXICO STATE PLANE EAST COORDINATES ARE GRID (NAD83). BASIS OF BEARING AND DISTANCES USED ARE NEW MEXICO STATE PLANE EAST COORDINATES MODIFIED TO THE SURFACE.</p> <p>QUARTER CORNER LAT. = 32.4424528°N LONG. = 103.6797451°W NMSP EAST (FT) N = 525312.30 E = 742964.96</p> <p>BILBREY "33" FED COM #4H ELEV. = 3729.1' LAT. = 32.4350958°N (NAD83) LONG. = 103.6753908°W NMSP EAST (FT) N = 522644.05 E = 744324.74</p> <p>S/4 CORNER SEC. 33 LAT. = 32.4279344°N LONG. = 103.6797450°W NMSP EAST (FT) N = 520030.45 E = 742997.32</p>		<p>NE CORNER SEC. 28 LAT. = 32.4570252°N LONG. = 103.6711736°W NMSP EAST (FT) N = 530630.10 E = 745576.37</p> <p>E/4 CORNER SEC. 28 LAT. = 32.4497418°N LONG. = 103.6711715°W NMSP EAST (FT) N = 527980.38 E = 745593.45</p> <p>SECTION CORNER LAT. = 32.4424830°N LONG. = 103.6711771°W NMSP EAST (FT) N = 525339.59 E = 745608.11</p> <p>E/4 CORNER SEC. 33 LAT. = 32.4352241°N LONG. = 103.6711810°W NMSP EAST (FT) N = 522624.19 E = 745639.63</p> <p>SE CORNER SEC. 33 LAT. = 32.4279661°N LONG. = 103.6711810°W NMSP EAST (FT) N = 520058.28 E = 745639.63</p>	
--	--	---	--	--	--

¹⁷ OPERATOR CERTIFICATION

I hereby certify that the information contained herein is true and complete to the best of my knowledge and belief, and that this organization either owns a working interest or unleased mineral interest in the land including the proposed bottom hole location or has a right to drill this well at this location pursuant to a contract with an owner of such a mineral or working interest, or to a voluntary pooling agreement or a compulsory pooling order heretofore entered by the division.

Signature: David H. Cook Date: 1/9/2014

Printed Name: David H. Cook Title: Regulatory Specialist

E-mail Address: david.cook@dmn.com

¹⁸ SURVEYOR CERTIFICATION

I hereby certify that the well location shown on this plat was plotted from field notes of actual surveys made by me or under my supervision, and that the same is true and correct to the best of my belief.

DATE: AUGUST 19, 2013

Date of Survey: _____

Signature and Seal of Professional Surveyor: [Signature]

Certificate Number: FILEMON F. JARAMILLO, PLS 12797

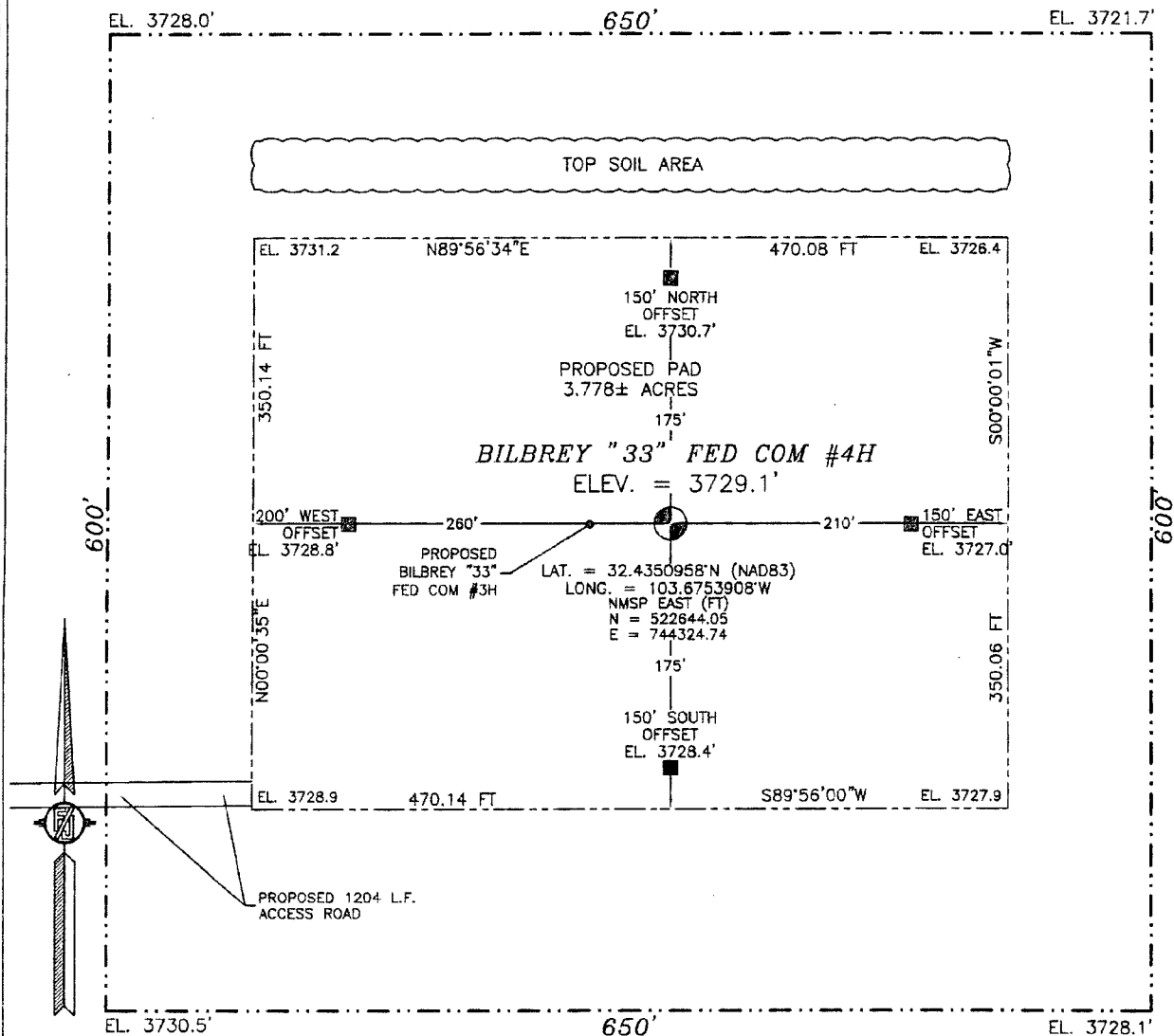
SURVEY NO. 2205

PP: 2600 FSL & 1300 FEL; 33-21S-32E

APR 28 2014

SECTION 33, TOWNSHIP 21 SOUTH, RANGE 32 EAST, N.M.P.M.
LEA COUNTY, STATE OF NEW MEXICO
SITE MAP

NOTE: LATITUDE AND LONGITUDE COORDINATES ARE SHOWN USING THE NORTH AMERICAN DATUM OF 1983 (NAD83). LISTED NEW MEXICO STATE PLANE EAST COORDINATES ARE GRID (NAD83). BASIS OF BEARING AND DISTANCES USED ARE NEW MEXICO STATE PLANE EAST COORDINATES MODIFIED TO THE SURFACE.



0 10 50 100 200

SCALE 1" = 100'

DIRECTIONS TO LOCATION

FROM THE INTERSECTION OF HWY 62-180 AND CAMPBELL ROAD GO SOUTH ON CAMPBELL ROAD APPROX. 8.9 MILES TO LEASE ROAD ON LEFT (EAST) TURN EAST ON LEASE ROAD GO APPROX. 0.7 MILES ROAD TURNS LEFT (NORTH) GO NORTH APPROX. 0.5 MILES ROAD TURNS RIGHT (EAST) GO EAST APPROX. 1.9 MILES ROAD TURNS RIGHT (SOUTH) GO SOUTH APPROX. 0.1 MILES TO ROAD LATH WITH WHITE AND RED FLAGGING ON EAST SIDE OF ROAD FOLLOW ROAD LATHS (EAST) APPROX 0.21 MILES TO LOCATION

DEVON ENERGY PRODUCTION COMPANY, L.P.

BILBREY "33" FED COM #4H

LOCATED 2600 FT. FROM THE SOUTH LINE
AND 1300 FT. FROM THE EAST LINE OF
SECTION 33, TOWNSHIP 21 SOUTH,
RANGE 32 EAST, N.M.P.M.
LEA COUNTY, STATE OF NEW MEXICO

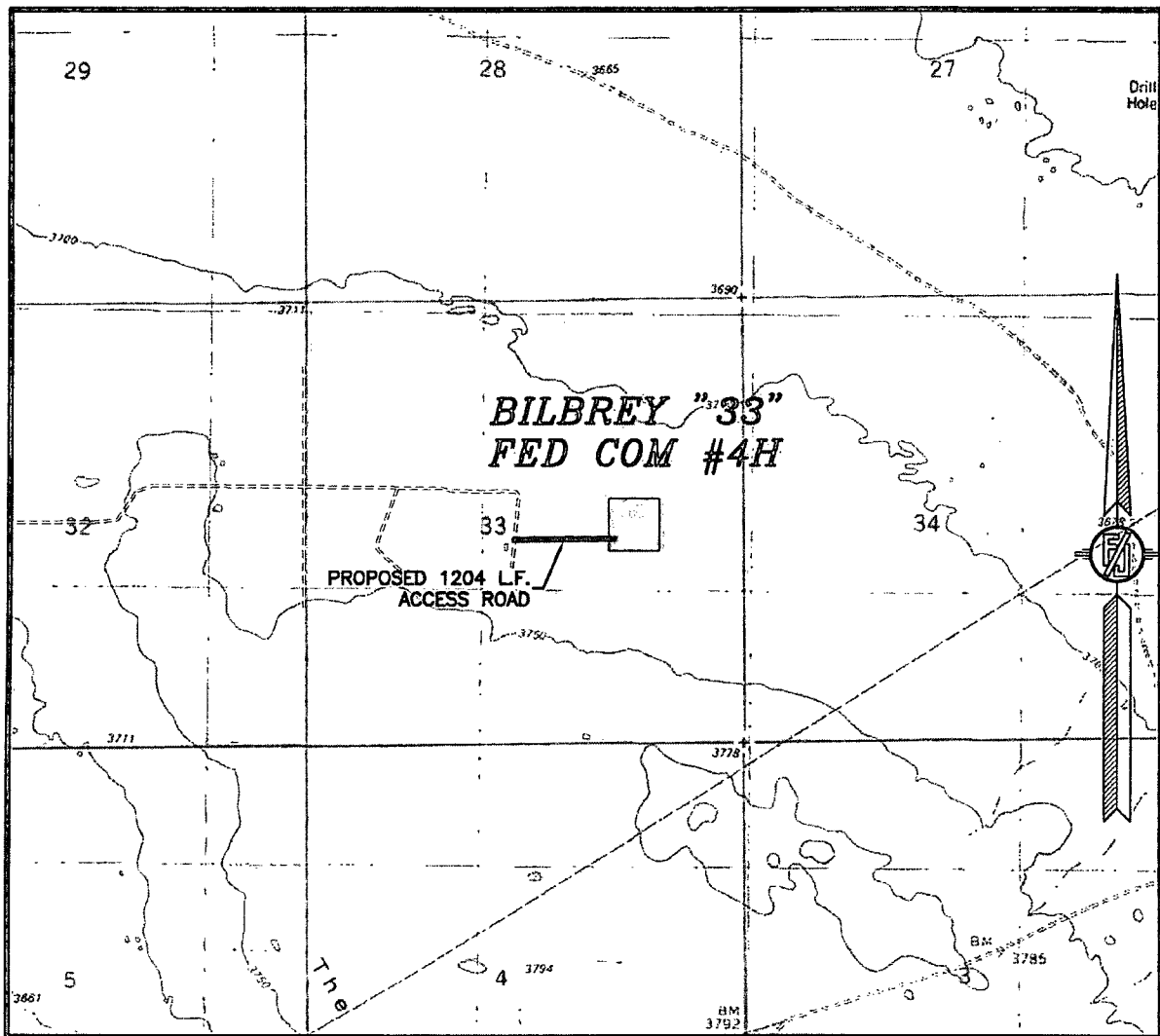
AUGUST 19, 2013

SURVEY NO. 2205

MADRON SURVEYING, INC. 301 SOUTH CANAL (575) 234-3341

CARLSBAD, NEW MEXICO

SECTION 33, TOWNSHIP 21 SOUTH, RANGE 32 EAST, N.M.P.M.
LEA COUNTY, STATE OF NEW MEXICO
LOCATION VERIFICATION MAP



USGS QUAD MAP:
THE DIVIDE

NOT TO SCALE

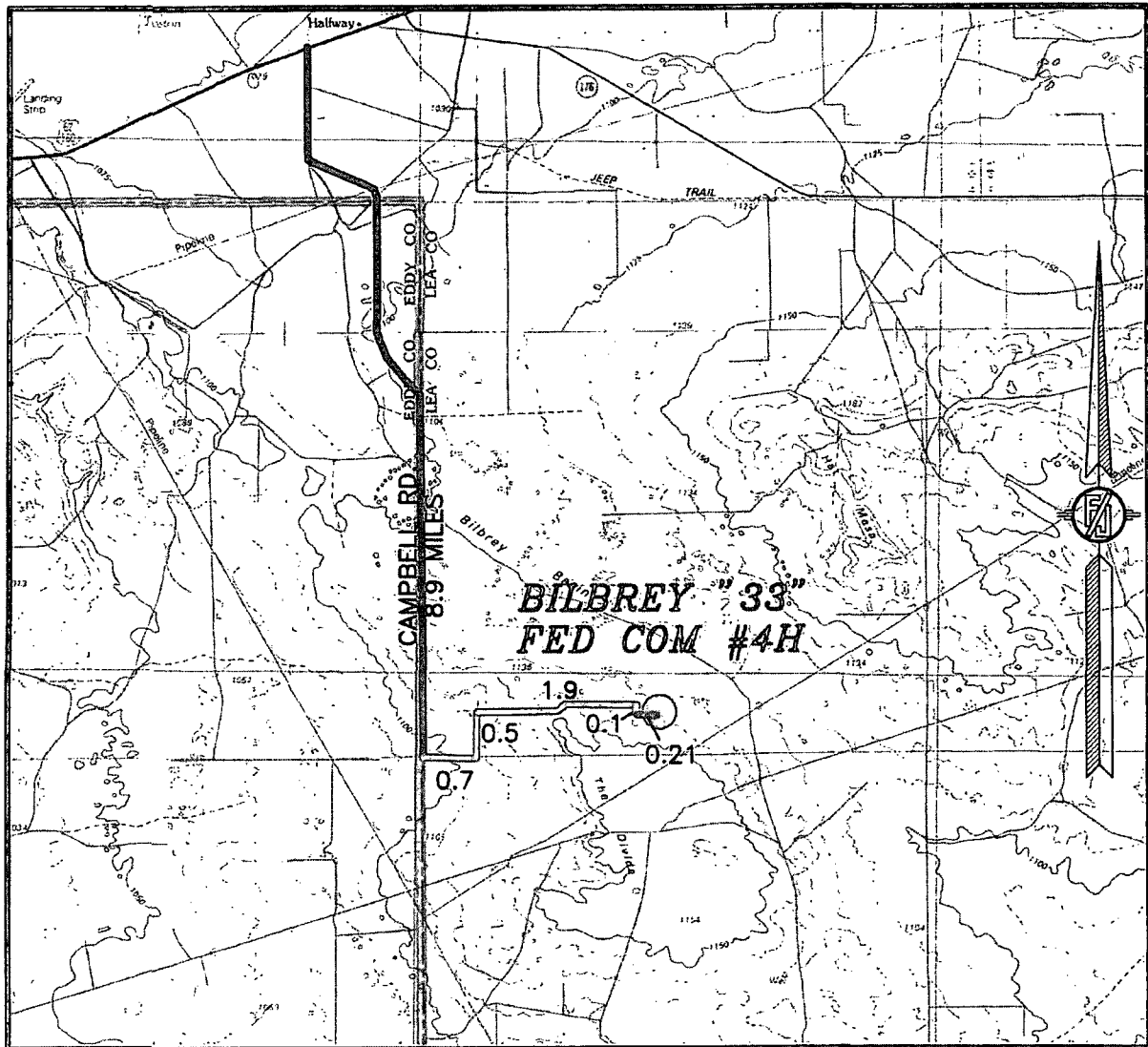
DEVON ENERGY PRODUCTION COMPANY, L.P.
BILBREY "33" FED COM #4H

LOCATED 2600 FT. FROM THE SOUTH LINE
AND 1300 FT. FROM THE EAST LINE OF
SECTION 33, TOWNSHIP 21 SOUTH,
RANGE 32 EAST, N.M.P.M.
LEA COUNTY, STATE OF NEW MEXICO

AUGUST 19, 2013

MADRON SURVEYING, INC. 301 SOUTH CANAL (575) 234-3341 CARLSBAD, NEW MEXICO SURVEY NO. 2205

SECTION 33, TOWNSHIP 21 SOUTH, RANGE 32 EAST, N.M.P.M.
LEA COUNTY, STATE OF NEW MEXICO
VICINITY MAP



DISTANCES IN MILES

NOT TO SCALE

DIRECTIONS TO LOCATION

FROM THE INTERSECTION OF HWY 62-180 AND CAMPBELL ROAD GO SOUTH ON CAMPBELL ROAD APPROX. 8.9 MILES TO LEASE ROAD ON LEFT (EAST) TURN EAST ON LEASE ROAD GO APPROX. 0.7 MILES ROAD TURNS LEFT (NORTH) GO NORTH APPROX. 0.5 MILES ROAD TURNS RIGHT (EAST) GO EAST APPROX. 1.9 MILES ROAD TURNS RIGHT (SOUTH) GO SOUTH APPROX. 0.1 MILES TO ROAD LATH WITH WHITE AND RED FLAGGING ON EAST SIDE OF ROAD FOLLOW ROAD LATHS (EAST) APPROX 0.21 MILES TO LOCATION

DEVON ENERGY PRODUCTION COMPANY, L.P.

BILBREY "33" FED COM #4H

LOCATED 2600 FT. FROM THE SOUTH LINE
AND 1300 FT. FROM THE EAST LINE OF

SECTION 33, TOWNSHIP 21 SOUTH,
RANGE 32 EAST, N.M.P.M.

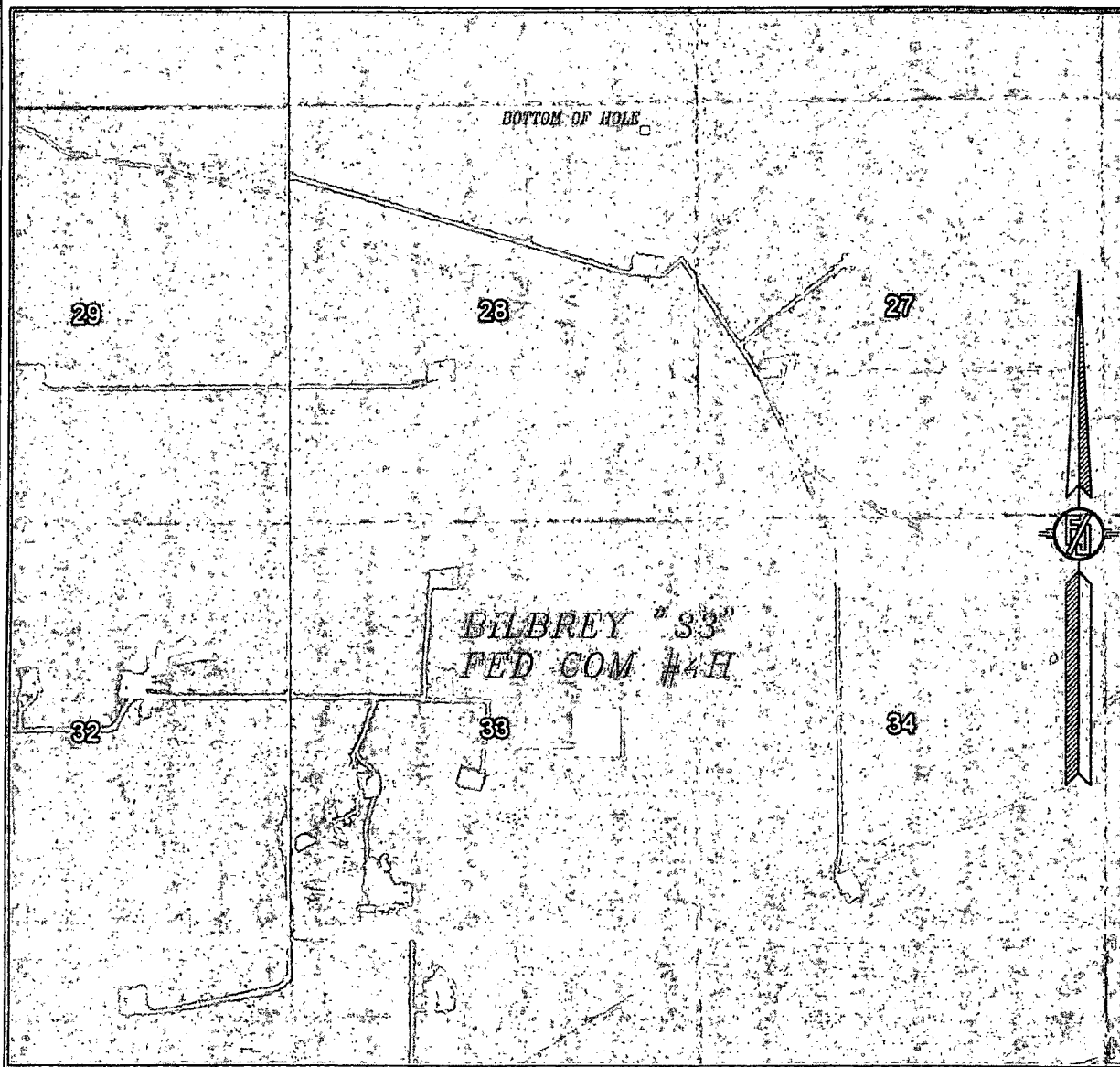
LEA COUNTY, STATE OF NEW MEXICO

AUGUST 19, 2013

SURVEY NO. 2205

MADRON SURVEYING, INC. 301 SOUTH CANAL (575) 234-3341 CARLSBAD, NEW MEXICO

SECTION 33, TOWNSHIP 21 SOUTH, RANGE 32 EAST, N.M.P.M.
LEA COUNTY, STATE OF NEW MEXICO
AERIAL PHOTO



NOT TO SCALE
AERIAL PHOTO:
GOOGLE EARTH
MARCH 2012

DEVON ENERGY PRODUCTION COMPANY, L.P.

BILBREY "33" FED COM #4H

LOCATED 2600 FT. FROM THE SOUTH LINE
AND 1300 FT. FROM THE EAST LINE OF
SECTION 33, TOWNSHIP 21 SOUTH,
RANGE 32 EAST, N.M.P.M.
LEA COUNTY, STATE OF NEW MEXICO

AUGUST 19, 2013

SURVEY NO. 2205

MADRON SURVEYING, INC. 301 SOUTH CANAL (575) 234-3341 CARLSBAD, NEW MEXICO

