

Submit 1 Copy To Appropriate District
Office
District I
1625 N. French Dr., Hobbs, NM 88240
District II
1301 W. Grand Ave., Artesia, NM 88210
District III
1000 Rio Brazos Rd., Aztec, NM 87410
District IV
1220 S. St. Francis Dr., Santa Fe, NM
87505

State of New Mexico
Energy, Minerals and Natural Resources

Form C-103
October 13, 2009

OIL CONSERVATION DIVISION
1220 South St. Francis Dr.
Santa Fe, NM 87505

WELL API NO. 30-025-38576
5. Indicate Type of Lease STATE <input checked="" type="checkbox"/> FEE <input type="checkbox"/>
6. State Oil & Gas Lease No. V07530-0001
7. Lease Name or Unit Agreement Name Linam AGI
8. Well Number #1
9. OGRID Number 36785
10. Pool name or Wildcat AGI:Wolfcamp

SUNDRY NOTICES AND REPORTS ON WELLS
(DO NOT USE THIS FORM FOR PROPOSALS TO DRILL OR TO DEEPEN OR PLUG BACK TO A
DIFFERENT RESERVOIR. USE "APPLICATION FOR PERMIT" (FORM C-101) FOR SUCH
PROPOSALS.)

1. Type of Well: Oil Well ☐ Gas Well ☐ Other Acid ☒ **AGI**

2. Name of Operator
DCP Midstream LP

3. Address of Operator
370 17th Street, Suite 2500, Denver, CO 80202

4. Well Location

Unit Letter K : 1980 feet from the South line and 1980 feet from the West line
Section 30 Township 18S Range 37E NMPM County Lea

11. Elevation (Show whether DR, RKB, RT, GR, etc.)
3736 GR

12. Check Appropriate Box to Indicate Nature of Notice, Report or Other Data

NOTICE OF INTENTION TO:

PERFORM REMEDIAL WORK ☐ PLUG AND ABANDON ☐
TEMPORARILY ABANDON ☐ CHANGE PLANS ☐
PULL OR ALTER CASING ☐ MULTIPLE COMPL ☐
DOWNHOLE COMMINGLE ☐

SUBSEQUENT REPORT OF:

REMEDIAL WORK ☐ ALTERING CASING ☐
COMMENCE DRILLING OPNS. ☐ P AND A ☐
CASING/CEMENT JOB ☐

OTHER:

OTHER: ☒ Conduct MIT/Braden Head tests

13. Describe proposed or completed operations. (Clearly state all pertinent details, and give pertinent dates, including estimated date of starting any proposed work). SEE RULE 19.15.7.14 NMAC. For Multiple Completions: Attach wellbore diagram of proposed completion or recompletion.

Based on the results of the workover of the Linam AGI #1 in May 2012, DCP and OCD-Hobbs have determined that a MIT should be conducted every six months until the well is repaired by adding a stacked packer to confirm that no communication exists between the well tubing and the annular space in the well (the annular space being inside the 7" casing) and that the portion of compromised casing above the current packer is maintaining its integrity.

The MIT and Braden head Test were conducted on Wednesday April 30, 2014 at 2:37 pm. In order to conduct the MIT, the annular space pressure was adjusted to 555 psig by adding a small amount of diesel immediately before the test.

- Initially the starting injection pressure and the annular space pressure between casing and tubing was 1614.6 psig and 1.2 psig, respectively.
- Bled off annular fluid (diesel) to bring observed annular space pressure to 0 psig.
- Placed chart on annular space and began recording annular space pressure.
- Slowly raised annular pressure by introducing diesel to annulus to 550 psig.
- When annulus pressure reached 550 psig closed valves to pumping truck and recorded annular space pressure for one-half hour.
- Recorded tubing injection pressure during charting.
- After one-half hour annular pressure was 525 psig.
- Bled off annular fluid to reduce observed pressure to zero.
- Stopped recording.
- Restored annular pressure to normal psig.

The Braden head Test was conducted the same day as the MIT.

- Closed valve to Braden head 24 hours prior to test.
- At the start of the test recorded Braden head casing pressure.
- Open the Braden head valve and recorded pressure for 30 minutes.
- Stop recording after 30 minutes.
- Started and ended at zero psig.

Geolex, Inc. and Pate Trucking conducted the test. After meeting at the DCP Linam AGI #1 well site, held a tailgate safety meeting upon arrival at the well location.

I hereby certify that the information above is true and complete to the best of my knowledge and belief.

SIGNATURE  TITLE: Consultant to DCP Midstream LP

DATE: 4/30/2014

Type or print name Michael W. Selke E-mail address: mselke@geolex.com

PHONE: 505-842-8000

For State Use Only

APPROVED BY:  TITLE: Dist. Supervisor

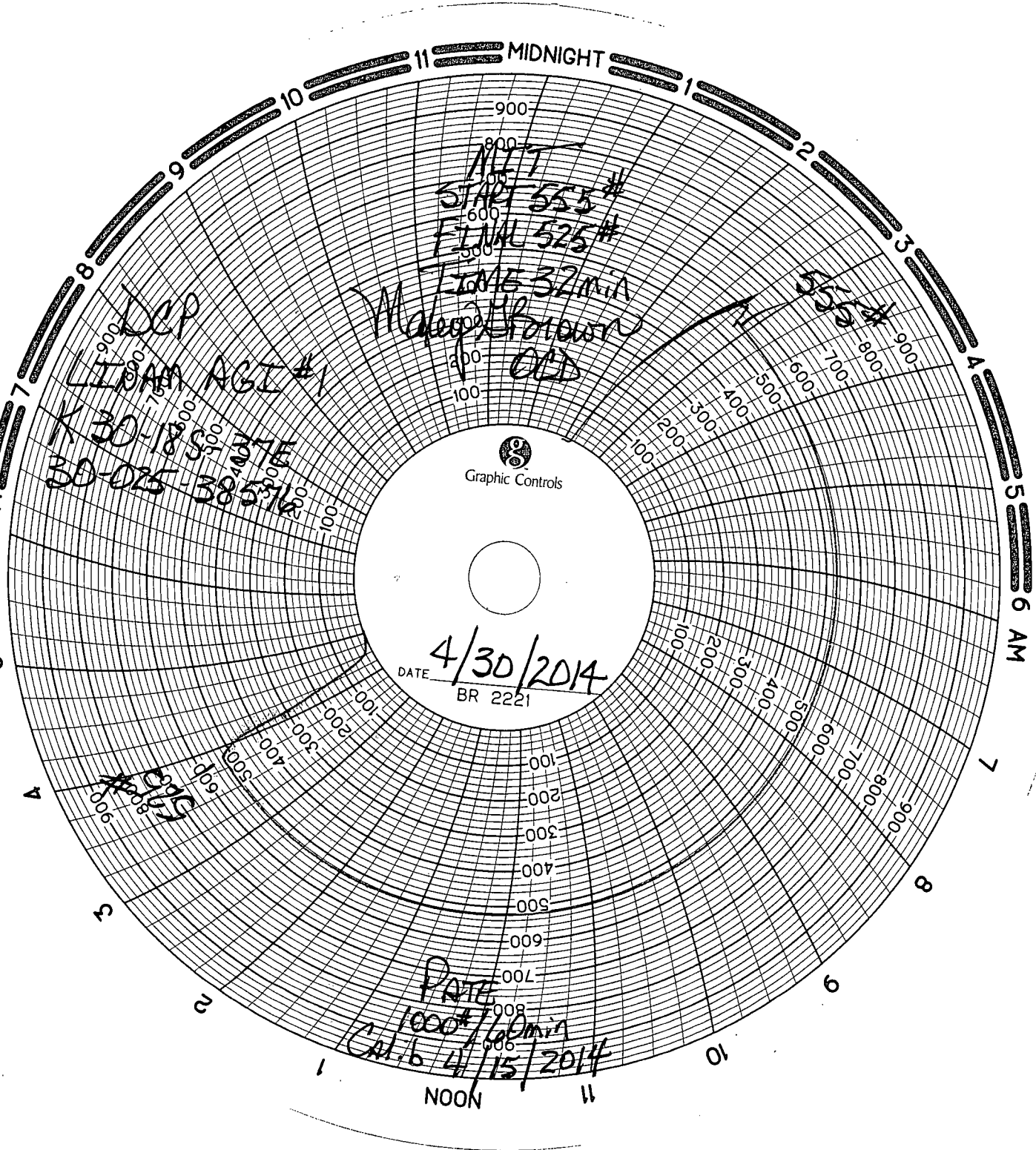
DATE: 4/30/2014

Conditions of Approval (if any):

APR 30 2014

PRINTED IN U.S.A. 6 PM

5



6 AM

7

8

9

10

11

NOON