

# State of New Mexico

## DISTRICT I

1625 N. FRENCH DR., HOBBS, NM 88240

Energy, Minerals and Natural Resources Department

Form C-102

Revised JUNE 10, 2003

## DISTRICT II

1301 W. GRAND AVENUE, ARTESIA, NM 88210

## OIL CONSERVATION DIVISION

1220 SOUTH ST. FRANCIS DR.

Santa Fe, New Mexico 87505

Submit to Appropriate District Office

State Lease - 4 Copies

Fee Lease - 3 Copies

## DISTRICT III

1000 Rio Brazos Rd., Aztec, NM 87410

## DISTRICT IV

1220 S. ST. FRANCIS DR., SANTA FE, NM 87505

## WELL LOCATION AND ACREAGE DEDICATION PLAT

☐ AMENDED REPORT

API Number 30-025-37236		Pool Code 6660	Pool Name Blinebry Oil & Gas (Oil)	
Property Code 34810	Property Name LEA COUNTY FEDERAL			Well Number 2
OGRID No. 00873	Operator Name APACHE CORPORATION			Elevation 3478'

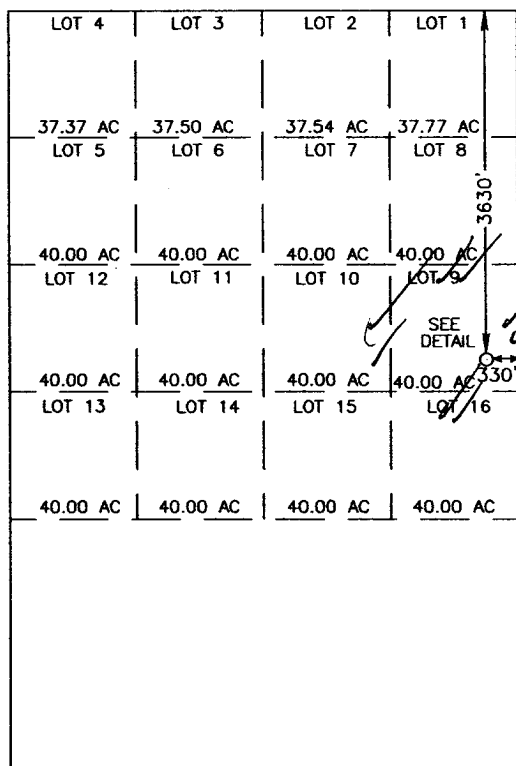
### Surface Location

UL or lot No.	Section	Township	Range	Lot Idn	Feet from the	North/South line	Feet from the	East/West line	County
9	5	21-S	37-E		3630	NORTH	330	EAST	LEA

### Bottom Hole Location If Different From Surface

UL or lot No.	Section	Township	Range	Lot Idn	Feet from the	North/South line	Feet from the	East/West line	County
Dedicated Acres 40		Joint or Infill		Consolidation Code		Order No.			

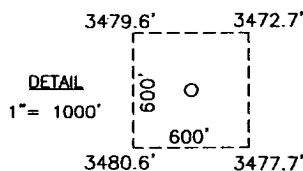
NO ALLOWABLE WILL BE ASSIGNED TO THIS COMPLETION UNTIL ALL INTERESTS HAVE BEEN CONSOLIDATED  
OR A NON-STANDARD UNIT HAS BEEN APPROVED BY THE DIVISION



GEODETIC COORDINATES  
NAD 27 NME

Y=551968.7 N  
X=856431.2 E

LAT.=32°30'43.77" N  
LONG.=103°10'37.54" W



SCALE: 1" = 2000'

### OPERATOR CERTIFICATION

I hereby certify the the information  
contained herein is true and complete to the  
best of my knowledge and belief.

Signature  
Blaine Linton  
Printed Name  
Blaine Linton  
Title  
Engineering Technician  
Date  
October 11, 2005

### SURVEYOR CERTIFICATION

I hereby certify that the well location shown  
on this plat was plotted from field notes of  
actual surveys made by me or under my  
supervision, and that the same is true and  
correct to the best of my belief.

MARCH 8, 2005

Date Surveyed DEL

Signature & Seal  
Professional Surveyor

GARY E. EDSON  
NEW MEXICO  
3/15/05  
05.110390

Certificate No. GARY E. EDSON 12641

# State of New Mexico

## DISTRICT I

1625 N. FRENCH DR., HOBBBS, NM 86240

Energy, Minerals and Natural Resources Department

## DISTRICT II

1301 W. GRAND AVENUE, ARTESIA, NM 88210

## DISTRICT III

1000 Rio Brazos Rd., Aztec, NM 87410

## DISTRICT IV

1220 S. ST. FRANCIS DR., SANTA FE, NM 87505

# OIL CONSERVATION DIVISION

1220 SOUTH ST. FRANCIS DR.  
Santa Fe, New Mexico 87505

Form C-102

Revised JUNE 10, 2003

Submit to Appropriate District Office

State Lease - 4 Copies

Fee Lease - 3 Copies

## WELL LOCATION AND ACREAGE DEDICATION PLAT

☐ AMENDED REPORT

API Number 30-025-37236		Pool Code 60240	Pool Name Tubb Oil & Gas (Oil)
Property Code 34810	Property Name LEA COUNTY FEDERAL		Well Number 2
OGRID No. 00873	Operator Name APACHE CORPORATION		Elevation 3478'

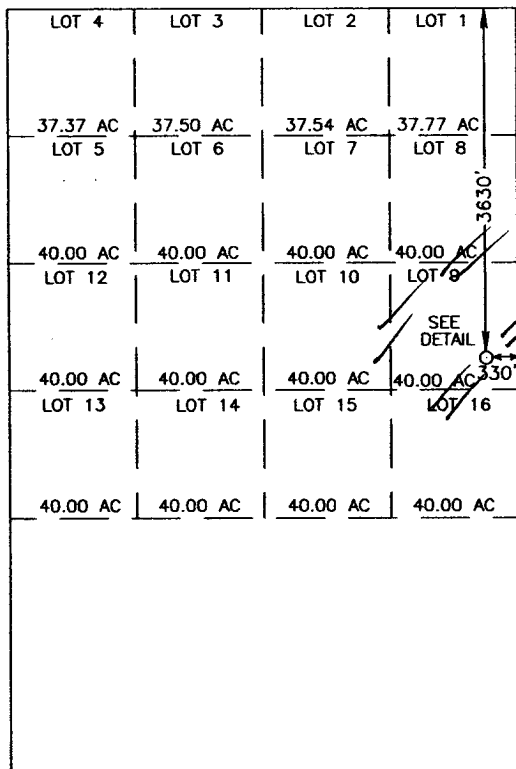
### Surface Location

UL or lot No.	Section	Township	Range	Lot Idn	Feet from the	North/South line	Feet from the	East/West line	County
9	5	21-S	37-E		3630	NORTH	330	EAST	LEA

### Bottom Hole Location If Different From Surface

UL or lot No.	Section	Township	Range	Lot Idn	Feet from the	North/South line	Feet from the	East/West line	County
Dedicated Acres 40		Joint or Infill		Consolidation Code		Order No.			

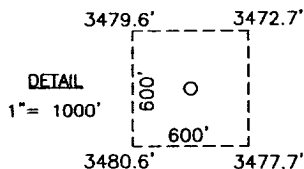
NO ALLOWABLE WILL BE ASSIGNED TO THIS COMPLETION UNTIL ALL INTERESTS HAVE BEEN CONSOLIDATED  
OR A NON-STANDARD UNIT HAS BEEN APPROVED BY THE DIVISION



GEODETIC COORDINATES  
NAD 27 NME

Y=551968.7 N  
X=856431.2 E

LAT.=32°30'43.77" N  
LONG.=103°10'37.54" W



SCALE: 1"= 2000'

### OPERATOR CERTIFICATION

I hereby certify the the information  
contained herein is true and complete to the  
best of my knowledge and belief.

*Elaine Linton*  
Signature

Elaine Linton  
Printed Name

Engineering Technician  
Title

October 11, 2005  
Date

### SURVEYOR CERTIFICATION

I hereby certify that the well location shown  
on this plat was plotted from field notes of  
actual surveys made by me or under my  
supervision and that the same is true and  
correct to the best of my belief.

MARCH 8, 2005

Date Surveyed  
Signature & Seal of  
Professional Surveyor

*Gary Edison*  
NEW MEXICO  
05.11.0390

Certificate No. GARY EDISON

12641

# State of New Mexico

DISTRICT I  
1625 N. FRENCH DR., HOBBS, NM 88240

Energy, Minerals and Natural Resources Department

DISTRICT II  
1301 W. GRAND AVENUE, ARTESIA, NM 88210

## OIL CONSERVATION DIVISION 1220 SOUTH ST. FRANCIS DR. Santa Fe, New Mexico 87505

Form C-102  
Revised JUNE 10, 2003  
Submit to Appropriate District Office  
State Lease - 4 Copies  
Fee Lease - 3 Copies

DISTRICT III  
1000 Rio Brazos Rd., Aztec, NM 87410

DISTRICT IV  
1220 S. ST. FRANCIS DR., SANTA FE, NM 87505

### WELL LOCATION AND ACREAGE DEDICATION PLAT

☐ AMENDED REPORT

API Number 30-025-37236		Pool Code 19190	Pool Name Drinkard
Property Code 34810	Property Name LEA COUNTY FEDERAL		Well Number 2
OGRID No. 00873	Operator Name APACHE CORPORATION		Elevation 3478'

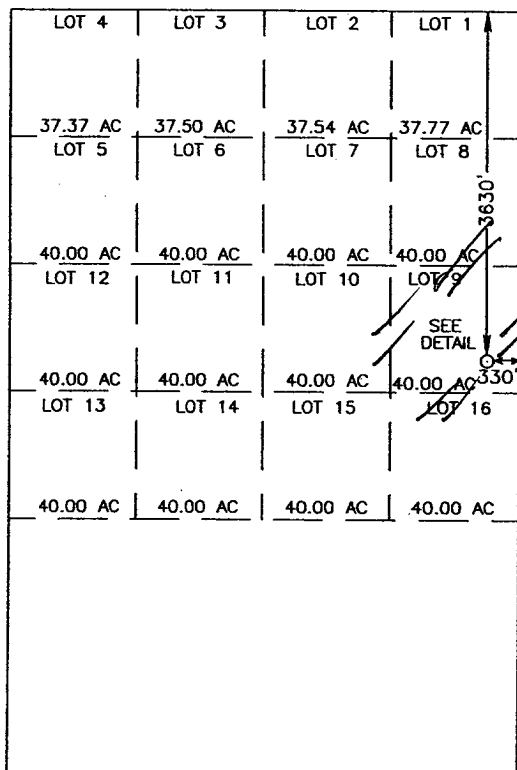
#### Surface Location

UL or lot No.	Section	Township	Range	Lot Idn	Feet from the	North/South line	Feet from the	East/West line	County
9	5	21-S	37-E		3630	NORTH	330	EAST	LEA

#### Bottom Hole Location If Different From Surface

UL or lot No.	Section	Township	Range	Lot Idn	Feet from the	North/South line	Feet from the	East/West line	County
Dedicated Acres 40	Joint or Infill	Consolidation Code	Order No.						

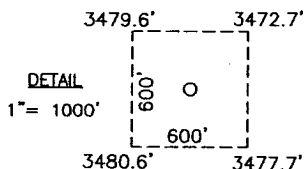
NO ALLOWABLE WILL BE ASSIGNED TO THIS COMPLETION UNTIL ALL INTERESTS HAVE BEEN CONSOLIDATED  
OR A NON-STANDARD UNIT HAS BEEN APPROVED BY THE DIVISION



GEODETIC COORDINATES  
NAD 27 NME

Y=551968.7 N  
X=856431.2 E

LAT.=32°30'43.77" N  
LONG.=103°10'37.54" W



SCALE: 1" = 2000'

#### OPERATOR CERTIFICATION

I hereby certify the the information  
contained herein is true and complete to the  
best of my knowledge and belief.

*Elaine Linton*  
Signature

Elaine Linton  
Printed Name

Engineering Technician  
Title

October 11, 2005  
Date

#### SURVEYOR CERTIFICATION

I hereby certify that the well location shown  
on this plat was plotted from field notes of  
actual surveys made by me or under my  
supervision and that the same is true and  
correct to the best of my belief.

MARCH 8, 2005

DATA SURVEYED  
Signature & Seal  
Professional Surveyor

NEW MEXICO  
GARY EIDSON  
05.11.0390  
Certification No. GARY EIDSON 12641