

DISTRICT I  
1625 N. French Dr., Hobbs, NM 88240  
Phone (575) 393-6161 Fax: (575) 393-0720

DISTRICT II  
811 S. First St., Artesia, NM 88210  
Phone (575) 748-1283 Fax: (575) 748-9720

DISTRICT III  
1000 Rio Brazos Rd., Aztec, NM 87410  
Phone (505) 334-6178 Fax: (505) 334-6170

DISTRICT IV  
1220 S. St. Francis Dr., Santa Fe, NM 87505  
Phone (505) 476-3460 Fax: (505) 476-3462

State of New Mexico  
Energy, Minerals and Natural Resources Department

**HOBBS OCD**  
Submit one copy to appropriate District Office

Form C-102  
Revised August 1, 2011

**OIL CONSERVATION DIVISION**

1220 South St. Francis Dr.  
Santa Fe, New Mexico 87505

MAY 09 2014

WELL LOCATION AND ACREAGE DEDICATION PLAT

RECEIVED  AMENDED REPORT

API Number <b>30-025-4184-0</b>	Pool Code <b>97366</b>	Pool Name <b>Bilbrey Basin; Bone Spring, South</b>
Property Code <b>12443</b>	Property Name <b>KIWI AKX STATE</b>	Well Number <b>11H</b>
OGRID No. <b>025575</b>	Operator Name <b>YATES PETROLEUM CORPORATION</b>	Elevation <b>3787</b>

Surface Location

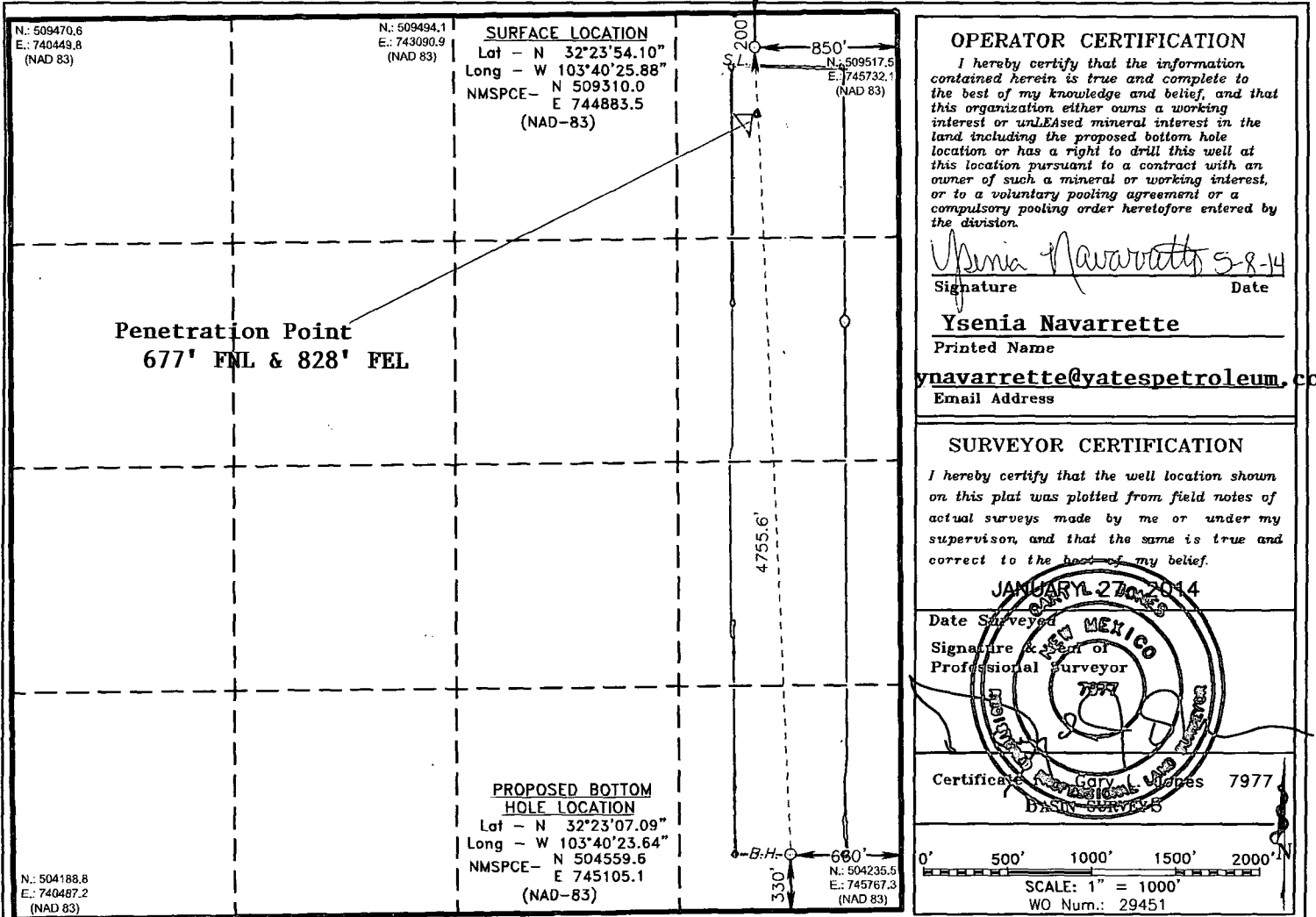
UL or lot No.	Section	Township	Range	Lot Idn	Feet from the	North/NORTH LINE	Feet from the	East/West line	County
A	16	22 S	32 E		200	NORTH	850	EAST	LEA

Bottom Hole Location If Different From Surface

UL or lot No.	Section	Township	Range	Lot Idn	Feet from the	North/NORTH LINE	Feet from the	East/West line	County
P	16	22 S	32 E		330	SOUTH	660	EAST	LEA

Dedicated Acres	Joint or Infill	Consolidation Code	Order No.
160.00			

NO ALLOWABLE WILL BE ASSIGNED TO THIS COMPLETION UNTIL ALL INTERESTS HAVE BEEN CONSOLIDATED OR A NON-STANDARD UNIT HAS BEEN APPROVED BY THE DIVISION



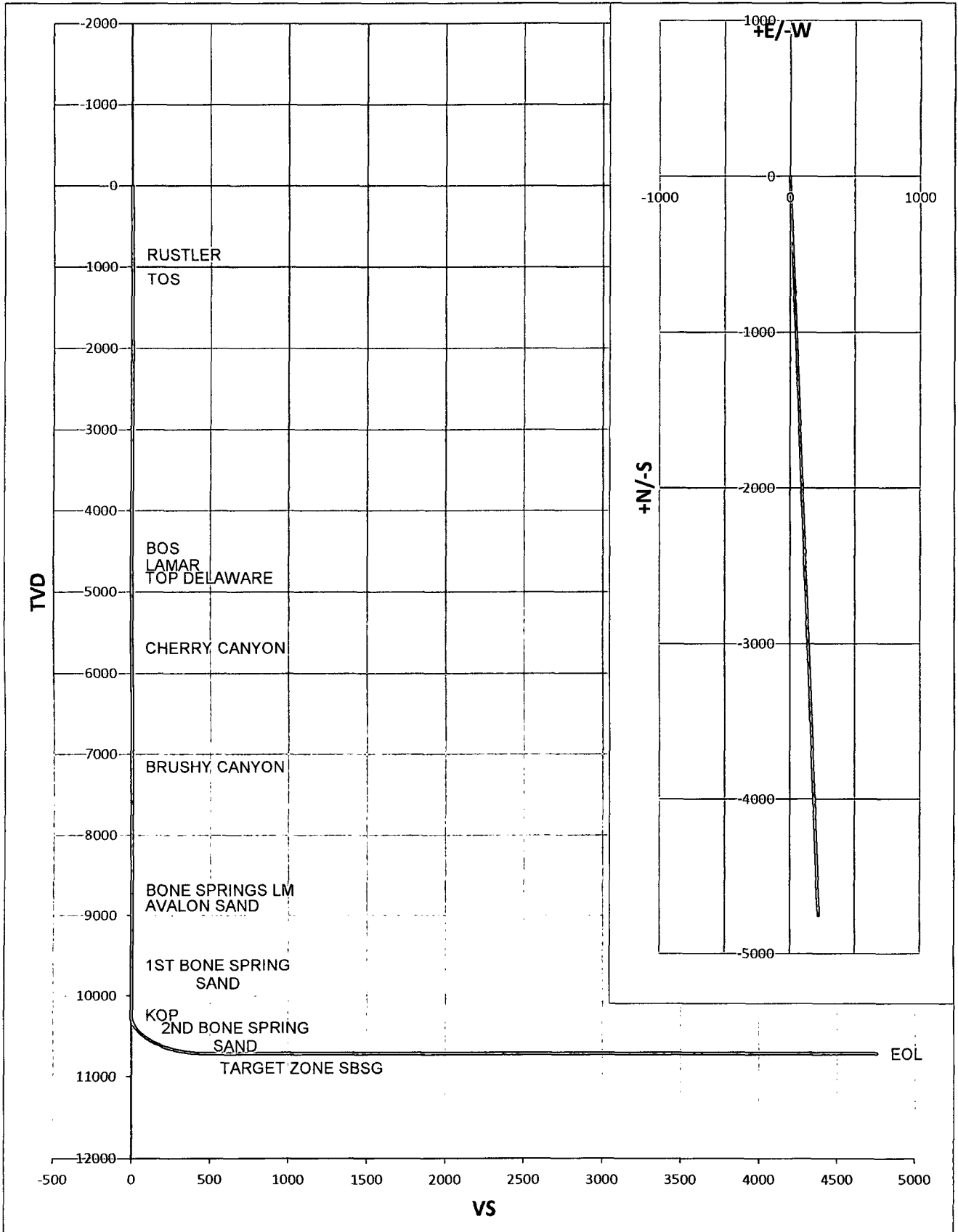
MAY 14 2014

Well Name: Kiwi AKX State #11H		Tgt N/-S: -4750.40	EOC TVD/MD: 10720.00 / 10992.54
Surface Location: Section 16 , Township 22S Range 32E		Tgt E/-W: 221.60	
Bottom Hole Location: Section 16 , Township 22S Range 32E		VS: 4755.57	EOL TVD/MD: 10720.00 / 15270.64
		VS Az: 177.33	

MD	Inc.	Azi.	TVD	N/S	E/W	VS	DLS	Comments
0	0	0	0	0	0	0	0	
849.00	0.00	0.00	849.00	0.00	0.00	0.00	0.00	RUSTLER
1151.00	0.00	0.00	1151.00	0.00	0.00	0.00	0.00	TOS
4463.00	0.00	0.00	4463.00	0.00	0.00	0.00	0.00	BOS
4746.00	0.00	0.00	4746.00	0.00	0.00	0.00	0.00	LAMAR
4824.00	0.00	0.00	4824.00	0.00	0.00	0.00	0.00	TOP DELAWARE
5688.00	0.00	0.00	5688.00	0.00	0.00	0.00	0.00	CHERRY CANYON
7160.00	0.00	0.00	7160.00	0.00	0.00	0.00	0.00	BRUSHY CANYON
8682.00	0.00	0.00	8682.00	0.00	0.00	0.00	0.00	BONE SPRINGS LM
8876.00	0.00	0.00	8876.00	0.00	0.00	0.00	0.00	AVALON SAND
9727.00	0.00	0.00	9727.00	0.00	0.00	0.00	0.00	1ST BONE SPRING SAND
10242.54	0.00	0.00	10242.54	0.00	0.00	0.00	0.00	KOP
10250.00	0.90	177.33	10250.00	-0.06	0.00	0.06	12.00	
10275.00	3.90	177.33	10274.97	-1.10	0.05	1.10	12.00	
10300.00	6.90	177.33	10299.86	-3.45	0.16	3.45	12.00	
10325.00	9.90	177.33	10324.59	-7.10	0.33	7.10	12.00	
10350.00	12.90	177.33	10349.09	-12.03	0.56	12.04	12.00	
10375.00	15.90	177.33	10373.31	-18.24	0.85	18.26	12.00	
10377.80	16.23	177.33	10376.00	-19.01	0.89	19.03	12.00	2ND BONE SPRING SAND
10400.00	18.90	177.33	10397.16	-25.70	1.20	25.73	12.00	
10425.00	21.90	177.33	10420.59	-34.41	1.60	34.44	12.00	
10450.00	24.90	177.33	10443.53	-44.32	2.07	44.37	12.00	
10475.00	27.90	177.33	10465.92	-55.42	2.59	55.48	12.00	
10500.00	30.90	177.33	10487.70	-67.68	3.16	67.75	12.00	
10525.00	33.90	177.33	10508.81	-81.06	3.78	81.14	12.00	
10550.00	36.90	177.33	10529.19	-95.52	4.46	95.62	12.00	
10575.00	39.90	177.33	10548.78	-111.03	5.18	111.15	12.00	
10600.00	42.90	177.33	10567.53	-127.54	5.95	127.68	12.00	
10625.00	45.90	177.33	10585.39	-145.01	6.76	145.17	12.00	
10650.00	48.90	177.33	10602.31	-163.39	7.62	163.56	12.00	
10675.00	51.90	177.33	10618.25	-182.63	8.52	182.82	12.00	
10700.00	54.90	177.33	10633.15	-202.67	9.45	202.89	12.00	
10725.00	57.90	177.33	10646.99	-223.47	10.42	223.71	12.00	
10750.00	60.90	177.33	10659.71	-244.96	11.43	245.23	12.00	
10775.00	63.90	177.33	10671.30	-267.09	12.46	267.38	12.00	
10800.00	66.90	177.33	10681.70	-289.79	13.52	290.11	12.00	
10825.00	69.90	177.33	10690.91	-313.01	14.60	313.35	12.00	
10850.00	72.90	177.33	10698.88	-336.67	15.71	337.04	12.00	
10875.00	75.90	177.33	10705.61	-360.72	16.83	361.11	12.00	
10900.00	78.90	177.33	10711.06	-385.09	17.96	385.51	12.00	
10925.00	81.90	177.33	10715.23	-409.71	19.11	410.15	12.00	
10950.00	84.90	177.33	10718.11	-434.51	20.27	434.99	12.00	
10975.00	87.90	177.33	10719.68	-459.43	21.43	459.93	12.00	
10992.54	90.00	177.33	10720.00	-476.95	22.25	477.46	12.00	TARGET ZONE SBSG
15270.64	90.00	177.33	10720.00	-4750.40	221.60	4755.57	0.00	EOL

MAY 14 2014

Kiwi AKX State #11H



**Kiwi AKX State #11H Contingency**

**Yates Petroleum Corporation respectfully requests the option of a contingency casing design based on the presence of SWD's in the area and possibility of encountering water flow.**

**Contingency Casing Design:**

**2<sup>nd</sup> intermediate:** Drilled with an 8 3/4" hole and set 7" casing at approx. 10,100' if hole conditions warrant.

0 ft to 10,100 ft				Make up Torque ft-lbs			Total ft
O.D.	Weight	Grade	Threads	opt.	min.	mx.	
7 inches	26 #/Ft	J-55	LT&C	3670	2750	4590	
Collapse Resistance	Internal Yield	Joint Strength		Body Yield		Drift	
4,320 psi	4,980 psi	367 ,000 #		415 ,000 #		6.151	

2 stage cement job with approx. 1530sx cement, 100% excess, TOC=0'

**Production:** Production hole will be drilled with a 6 1/8" hole:

0 ft to 15,271 ft				Make up Torque ft-lbs			Total ft =
O.D.	Weight	Grade	Threads	opt.	min.	mx.	
4.5 inches	11.6 #/Ft	P-110	BT&C	3020	2270	3780	15,271
Collapse Resistance	Internal Yield	Joint Strength		Body Yield		Drift	
7,580 psi	10,690 psi	385 ,000 #		367 ,000 #		3.875	

Cemented in one stage w/DV/Packer stage tool at approx. 10,000' with approx. 370sx cement, 35% excess, TOC=10,000'

4 1/2" casing will be cut and pulled at approx. 10,000' after stimulation.