

District I - (575) 393-6161
1625 N. French Dr., Hobbs, NM 88240
District II - (575) 748-1283
811 S. First St., Artesia, NM 88210
District III - (505) 334-6178
1000 Rio Brazos Rd., Aztec, NM 87410
District IV - (505) 476-3460
1220 S. St. Francis Dr., Santa Fe, NM 87505

HOBBS OGD
MAY 27 2014
RECEIVED

OIL CONSERVATION DIVISION
1220 South St. Francis Dr.
Santa Fe, NM 87505

WELL API NO. 30-025-11764
5. Indicate Type of Lease FEDERAL <input checked="" type="checkbox"/> X STATE <input type="checkbox"/> FEE <input type="checkbox"/>
6. State Oil & Gas Lease No. NM 0766
7. Lease Name or Unit Agreement Name CARLSON A
8. Well Number 2
9. OGRID Number 160620
10. Pool name or Wildcat JUSTIS (USSELMAN)
11. Elevation (Show whether DR, RKB, RT, GR, etc.) 3071' DR

SUNDRY NOTICES AND REPORTS ON WELLS
(DO NOT USE THIS FORM FOR PROPOSALS TO DRILL OR TO DEEPEN OR PLUG BACK TO A DIFFERENT RESERVOIR. USE "APPLICATION FOR PERMIT" (FORM C-101) FOR SUCH PROPOSALS.)

1. Type of Well: Oil Well ☒ X Gas Well ☐ Other ☐
2. Name of Operator
WHITING OIL AND GAS CORPORATION
3. Address of Operator
400 W. ILLINOIS AVE., SUITE 1300, MIDLAND, TX 79701

4. Well Location
Unit Letter I : 2310 feet from the SOUTH line and 990 feet from the EAST line
Section 25 Township T25S Range R37E NMPM County LEA

12. Check Appropriate Box to Indicate Nature of Notice, Report or Other Data

NOTICE OF INTENTION TO:

PERFORM REMEDIAL WORK ☐ PLUG AND ABANDON ☐
TEMPORARILY ABANDON ☐ CHANGE PLANS ☐
PULL OR ALTER CASING ☐ MULTIPLE COMPL ☐
DOWNHOLE COMMINGLE ☐
CLOSED-LOOP SYSTEM ☐
OTHER: ACIDIZE

SUBSEQUENT REPORT OF:

REMEDIAL WORK ☐ ALTERING CASING ☐
COMMENCE DRILLING OPNS. ☐ P AND A ☐
CASING/CEMENT JOB ☐
OTHER X Install new Lact Unit.

13. Describe proposed or completed operations. (Clearly state all pertinent details, and give pertinent dates, including estimated date of starting any proposed work). SEE RULE 19.15.7.14 NMAC. For Multiple Completions: Attach wellbore diagram of proposed completion or recompletion.

Start date: 06/05/2014

PLEASE SEE ATTACHMENTS FOR DETAILS OF WORK TO BE PERFORMED:

In addition to the attachment we will also install a pump to handle the 360 BPH rate that we need, a Divert Valve, and we will be installing the Corolis Meter instead of the Smith.

DENIED

FEDERAL LEASE. SUBMIT TO BLM
ON BLM FORMS. MJB

Spud Date:

Rig Release Date:

I hereby certify that the information above is true and complete to the best of my knowledge and belief.

SIGNATURE

Martha Starek

TITLE Engineering Technician

DATE 5/22/14

Type or print name Martha Starek

E-mail address: martha.starek@whiting.com

PHONE: 432/686-6758

For State Use Only

APPROVED BY:

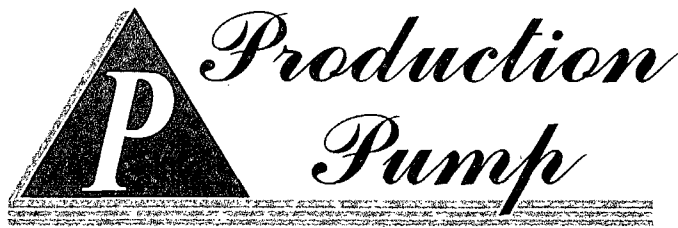
DENIED

DATE

Conditions of Approval (if any):

MJB 5/28/2014

MAY 29 2014



**PO Box 160 / 2710 25th Street,
Snyder, Texas 79549 (800) 221-8672
(325) 573-1741 Fax (325) 573-3471**

Date August 17, 2010
Quotation # 080310
Revision #2

Whiting Oil & Gas Corp.
400 W. Illinois, Suite 1300
Midland, Texas 79701

Tel # 432-686-6735
Cell # 432-557-9455

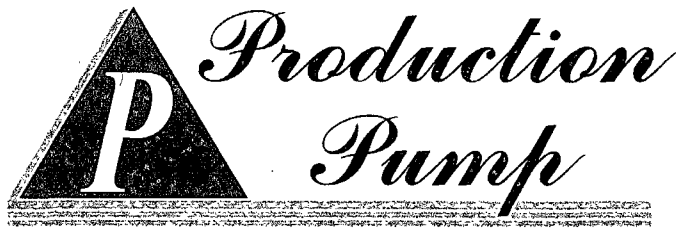
Attn: Ronny Schooler
Ref: Lease Custody Transfer Skid

Dear Sir: We are pleased to submit the following for your consideration.

Furnish all labor and materials to construct a 4" LACT unit designed to flow 17,000 BPD @ 100-PSI inlet pressure from pipeline in crude oil service with a .80 specific gravity to consist of the following:

- 1- 4" 150# flanged inlet connection from customer's pipeline system.
- 2- 4" KoFlo static mixer.
- 3- 4" AO Smith flanged strainer/air eliminator.
- 4- Micromotion model CFM300M 3" 150# flanged 316-stainless steel Coriolis meter assembly with a 2700C multivariable density transmitter, PE100 proving enclosure, and RTD assembly.
- 5- Sample system with 10cc volume regulator, 115-volt explosion proof solenoid and beveled probe.
- 6- One manual draw off point with valve, beveled probe, and turn down tubing.
- 7- One Cemco 4" flanged backpressure valve in discharge line.
- 8- Test thermowell mounted in 4" line downstream of meter.
- 9- A 4" Three valve prover loop with a Twinseal block and bleed valve, 2-4" Virgo flanged ball valves with locking device, 2-brass quick connects and brass dust caps. Loop will include a steel enclosure/drain box with locking device.
- 10- A 4" flanged swing check valve and flanged ball valve in discharge line.
- 11- PPSI 15-gallon sample pot system to include a sample container with sloped bottom, 8" Clay & Bailey lid, internally coated with Corvel 1660 coating, system will include a Goulds mixing pump with 3-phase electric motor, static mixer, ductile iron gage cocks with 5/8" sight glass, steel ball valves with locking device, single sample draw off valve, vacuum breaker, relief valve, 30-PSI pressure gauge, and discharge swing check valve.

(Continued)



- 12- Three 0-200 PSI pressure gauges with isolation needle valves.
- 13- All components will be mounted on a 6" wide flange beam structural steel skid, with all necessary bracing, and drip pan for spill containment.
- 14- All piping will be 4" 150# RFWN flanged with non-asbestos gaskets and B-7 studs.
- 15- Skid will include all electrical end devices wired to a NEMA-4X enclosure mounted on skid with terminal strip in rigid conduit with liquid-tite connections used only where required for movement.
- 16- Complete unit will be painted with standard enamel paint one color of customer's choice.

NOTE:

All Components Are New! No Refurbished Components Will Be Used.

If drawings are not required deduct \$1,000.00 from above pricing.

General layout drawings can be provided in 4-6 weeks ARO.

Price Doesn't Include Any Control Panels Or Controls

Price doesn't include delivery of unit to location.

Price doesn't include any installation at location.

Price doesn't include any electrical wiring required at location.

Price doesn't include start-up.

Delivery 8-10 Weeks ARO

Price FOB Snyder, Texas

Terms Net 30 Days

Price Doesn't Include Any Taxes

We appreciate the opportunity to quote the above and hope to be of service to you.

Respectfully Submitted

Joe Roemisch, Regional VP

Whiting Oil & Gas Corp.

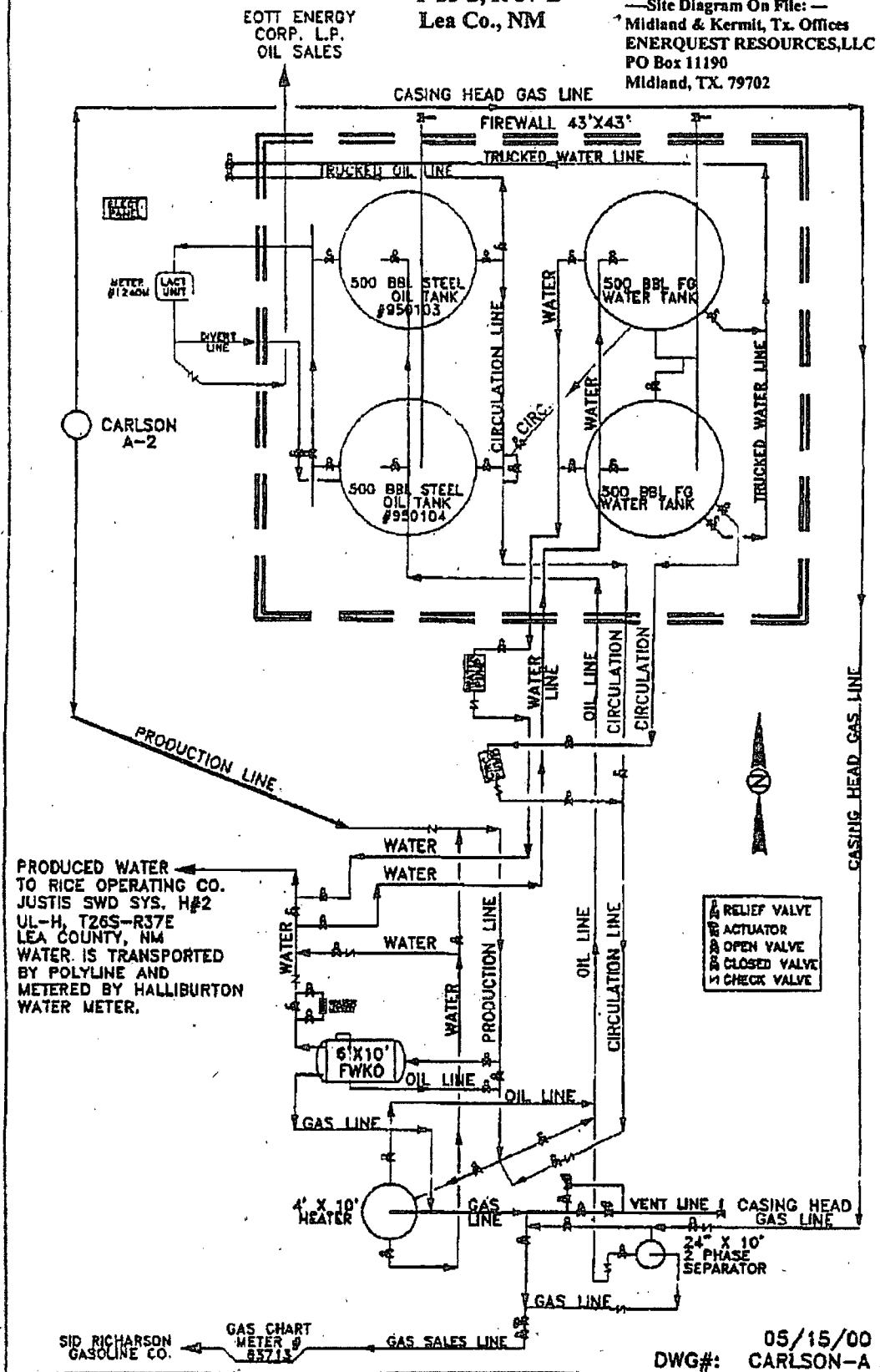
Carlson A Federal #2

Sec. 25, NE/SE Quarter

T-25-S, R-37-E

Lea Co., NM

—Site Diagram On File:—
Midland & Kermit, Tx. Offices
ENERQUEST RESOURCES, LLC
PO Box 11190
Midland, TX. 79702



05/15/00
DWG#: CARLSON-A