

DISTRICT I  
1625 N. FRENCH DR., HOBBS, NM 88240

DISTRICT II  
1301 W. GRAND AVENUE, ARTESIA, NM 88210

DISTRICT III  
1000 Rio Brazos Rd., Aztec, NM 87410

DISTRICT IV  
1220 S. ST. FRANCIS DR., SANTA FE, NM 87505

State of New Mexico  
Energy, Minerals and Natural Resources Department

OIL CONSERVATION DIVISION  
1220 SOUTH ST. FRANCIS DR.  
Santa Fe, New Mexico 87505

Form C-102  
Revised JUNE 10, 2003  
Submit to Appropriate District Office  
State Lease - 4 Copies  
Fee Lease - 3 Copies

WELL LOCATION AND ACREAGE DEDICATION PLAT

☐ AMENDED REPORT

API Number 30-025-37324	Pool Code 50350	Pool Name Penrose Skelly; Grayburg
Property Code 34816	Property Name NEW MEXICO STATE S	Well Number 44
OGRID No. 00873	Operator Name APACHE CORPORATION	Elevation 3360'

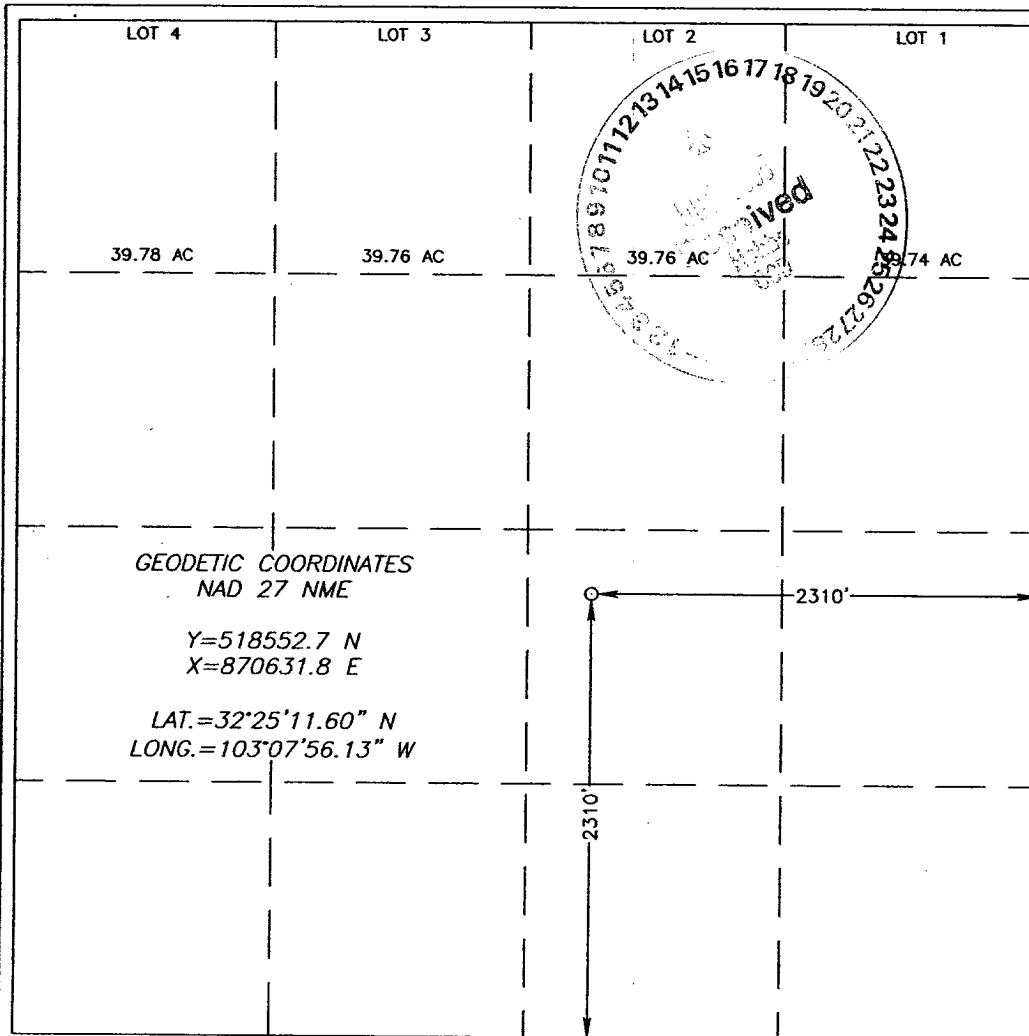
Surface Location

UL or lot No. J	Section 2	Township 22-S	Range 37-E	Lot Idn	Feet from the 2310	North/South line SOUTH	Feet from the 2310	East/West line EAST	County LEA
--------------------	--------------	------------------	---------------	---------	-----------------------	---------------------------	-----------------------	------------------------	---------------

Bottom Hole Location If Different From Surface

UL or lot No.	Section	Township	Range	Lot Idn	Feet from the	North/South line	Feet from the	East/West line	County
					Dedicated Acres	Joint or Infill	Consolidation Code	Order No.	

NO ALLOWABLE WILL BE ASSIGNED TO THIS COMPLETION UNTIL ALL INTERESTS HAVE BEEN CONSOLIDATED  
OR A NON-STANDARD UNIT HAS BEEN APPROVED BY THE DIVISION



<b>OPERATOR CERTIFICATION</b>	
I hereby certify the the information contained herein is true and complete to the best of my knowledge and belief.	
<u>Elaine Linton</u> Signature	
<u>Elaine Linton</u> Printed Name	
<u>Engineering Technician</u> Title	
<u>10/13/2005</u> Date	
<b>SURVEYOR CERTIFICATION</b>	
I hereby certify that the well location shown on this plat was plotted from field notes of actual surveys made by me or under my supervision, and that the same is true and correct to the best of my belief.	
DECEMBER 16, 2004	
Date Surveyed	DEL
Signature & Seal of Professional Surveyor	
<u>GARY EIDSON</u> 04-11-1665	
Certificate No. GARY EIDSON	12641