

DISTRICT I
1625 N. French Dr., Hobbs, NM 88240
Phone (505) 393-6161 Fax: (505) 393-0720

DISTRICT II
811 S. First St., Artesia, NM 88210
Phone (505) 748-1283 Fax: (505) 748-9720

DISTRICT III
1000 Rio Brazos Rd., Aztec, NM 87410
Phone (505) 334-6178 Fax: (505) 334-6170

DISTRICT IV
1220 S. St. Francis Dr., Santa Fe, NM 87505
Phone (505) 476-3480 Fax: (505) 476-3482

HOBBS OCD

State of New Mexico
Energy, Minerals and Natural Resources Department
JUN 26 2014
OIL CONSERVATION DIVISION
1220 South St. Francis Dr.
RECEIVED Santa Fe, New Mexico 87505

Form C-102
Revised August 1, 2011
Submit one copy to appropriate
District Office

WELL LOCATION AND ACREAGE DEDICATION PLAT

AMENDED REPORT

| | | |
|----------------------------|---|--------------------------------------|
| API Number 30-025-40843 | Pool Code 96660 | Pool Name Berry Bone Spring South |
| Property Code 39529 | Property Name JAMALBERRY | Well Number 1H |
| OGRID No. 260511 | Operator Name GMT EXPLORATION CO., LLC | Elevation 3724' |

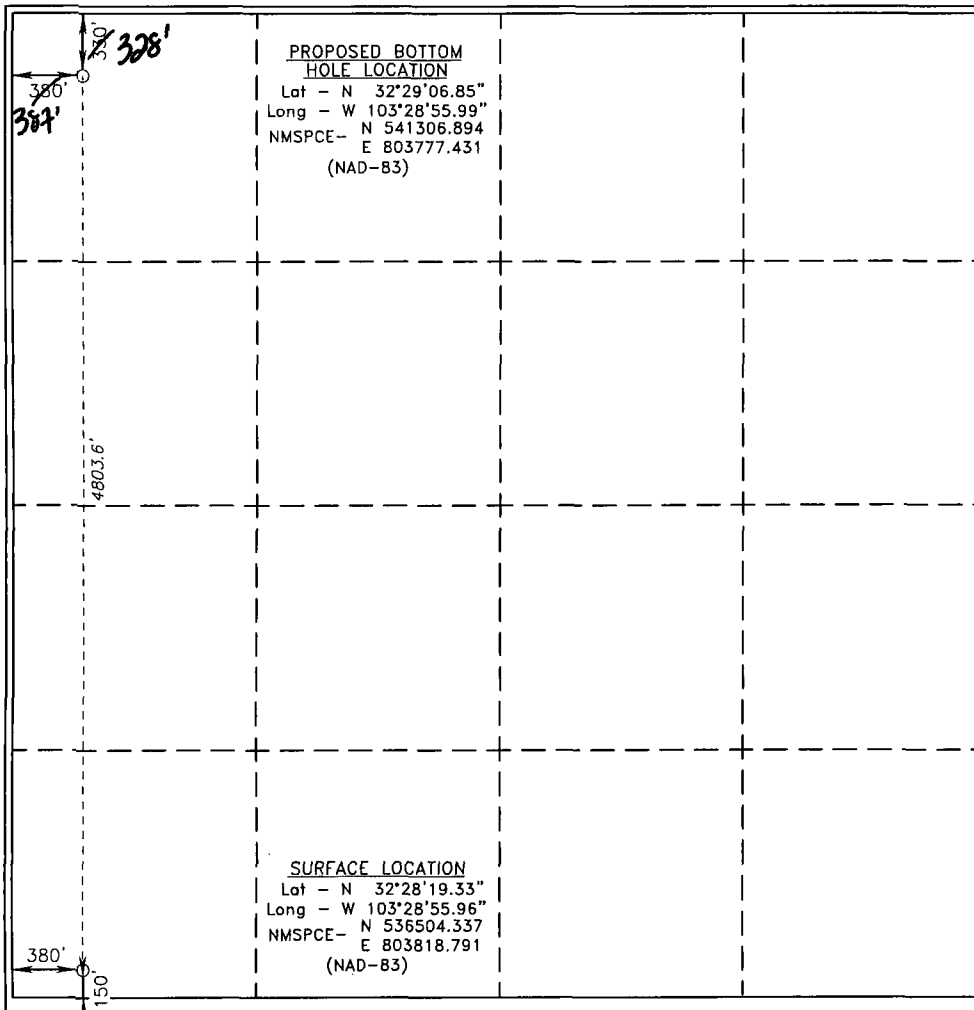
Surface Location

| UL or lot No. | Section | Township | Range | Lot Idn | Feet from the | North/South line | Feet from the | East/West line | County |
|---------------|---------|----------|-------|---------|---------------|------------------|---------------|----------------|--------|
| M | 16 | 21 S | 34 E | | 150 | SOUTH | 380 | WEST | LEA |

Bottom Hole Location If Different From Surface

| UL or lot No. | Section | Township | Range | Lot Idn | Feet from the | North/South line | Feet from the | East/West line | County |
|-----------------|-----------------|--------------------|-----------|---------|---------------|------------------|---------------|----------------|--------|
| D | 16 | 21 S | 34 E | | 330 | NORTH | 380 387 | WEST | LEA |
| Dedicated Acres | Joint or Infill | Consolidation Code | Order No. | 328 | | | | | |

NO ALLOWABLE WILL BE ASSIGNED TO THIS COMPLETION UNTIL ALL INTERESTS HAVE BEEN CONSOLIDATED
OR A NON-STANDARD UNIT HAS BEEN APPROVED BY THE DIVISION



OPERATOR CERTIFICATION
 I hereby certify that the information contained herein is true and complete to the best of my knowledge and belief, and that this organization either owns a working interest or unleased mineral interest in the land including the proposed bottom hole location or has a right to drill this well at this location pursuant to a contract with an owner of such a mineral or working interest, or to a voluntary pooling agreement or a compulsory pooling order heretofore entered by the division.

Signature: *Hugo Cartaya* Date: 6/18/14
 Printed Name: Hugo Cartaya
 Email Address: hcartaya@GMTExploration.com

SURVEYOR CERTIFICATION
 I hereby certify that the well location shown on this plat was plotted from field notes of actual surveys made by me or under my supervision and that the same is true and correct to the best of my belief.

Date Surveyed: OCTOBER 20 2012
 Signature of Professional Surveyor: *[Signature]*
 No. 7977
 Certificate No. Cory L. Jones 7977
 BASIN SURVEYS 27542

JUL 02 2014