

District I
1625 N. French Dr., Hobbs, NM 88240
Phone: (575) 393-6161 Fax: (575) 393-0720
District II
811 S. First St., Artesia, NM 88210
Phone: (575) 748-1283 Fax: (575) 748-9720
District III
1000 Rio Brazos Road, Aztec, NM 87410
Phone: (505) 334-6178 Fax: (505) 334-6170
District IV
1220 S. St. Francis Dr., Santa Fe, NM 87505
Phone: (505) 476-3460 Fax: (505) 476-3462

State of New Mexico
Energy, Minerals & Natural Resources Department
OIL CONSERVATION DIVISION
1220 South St. Francis Dr.
Santa Fe, NM 87505

Form C-102
Revised August 1, 2011
Submit one copy to appropriate
District Office

AUG 05 2014 ☐ AMENDED REPORT

RECEIVED

WELL LOCATION AND ACREAGE DEDICATION PLAT

30-025- ¹ API Number 42018	57380 ² Pool Code	Skaggs; Grayburg ³ Pool Name
⁴ Property Code 31670	⁵ Property Name SEMU	
⁷ GRID No. 217817	⁸ Operator Name ConocoPhillips Company	
		⁶ Well Number 246
		⁹ Elevation 3538'

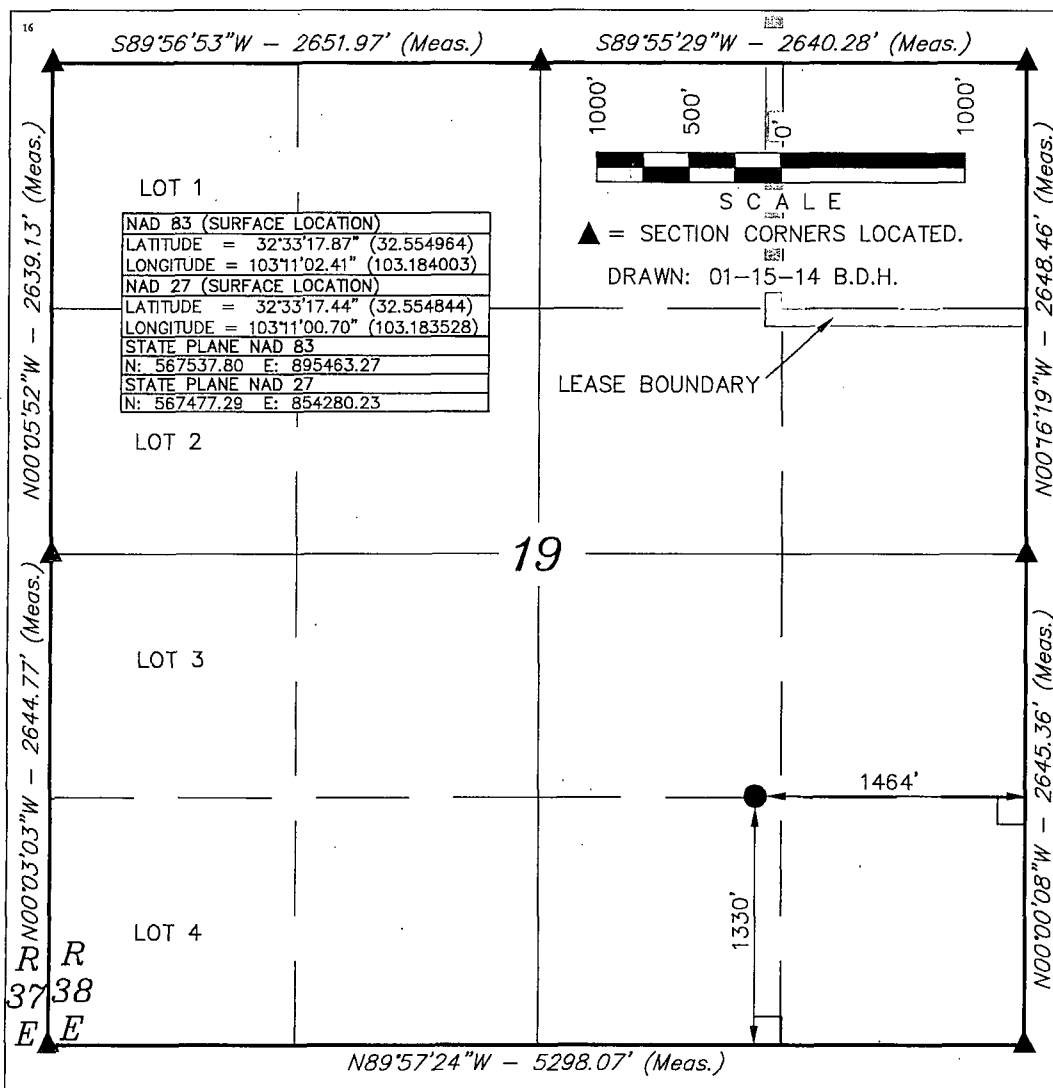
¹⁰ Surface Location

UL or lot no.	Section	Township	Range	Lot Idn	Feet from the	North/South line	Feet from the	East/West line	County
J	19	20 S	38 E		1330	SOUTH	1464	EAST	LEA

¹¹ Bottom Hole Location If Different From Surface

UL or lot no.	Section	Township	Range	Lot Idn	Feet from the	North/South line	Feet from the	East/West line	County
¹² Dedicated Acres 40		¹³ Joint or Infill		¹⁴ Consolidation Code		¹⁵ Order No.			

No allowable will be assigned to this completion until all interests have been consolidated or a non-standard unit has been approved by the division.



¹⁷ OPERATOR
CERTIFICATION

I hereby certify that the information contained herein is true and complete to the best of my knowledge and belief, and that this organization either owns a working interest or unleased mineral interest in the land including the proposed bottom hole location or has a right to drill this well at this location pursuant to a contract with an owner of such a mineral or working interest, or to a voluntary pooling agreement or a compulsory pooling order heretofore entered by the division.

Susan B. Maunder 2/7/14
Signature Date

Susan B. Maunder
Printed Name

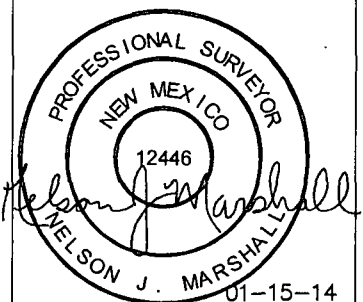
Susan.B.Maunder@conocophillips.com
E-mail Address

¹⁸ SURVEYOR
CERTIFICATION

I hereby certify that the well location shown on this plat was plotted from field notes of actual surveys made by me or under my supervision, and that the same is true and correct to the best of my belief.

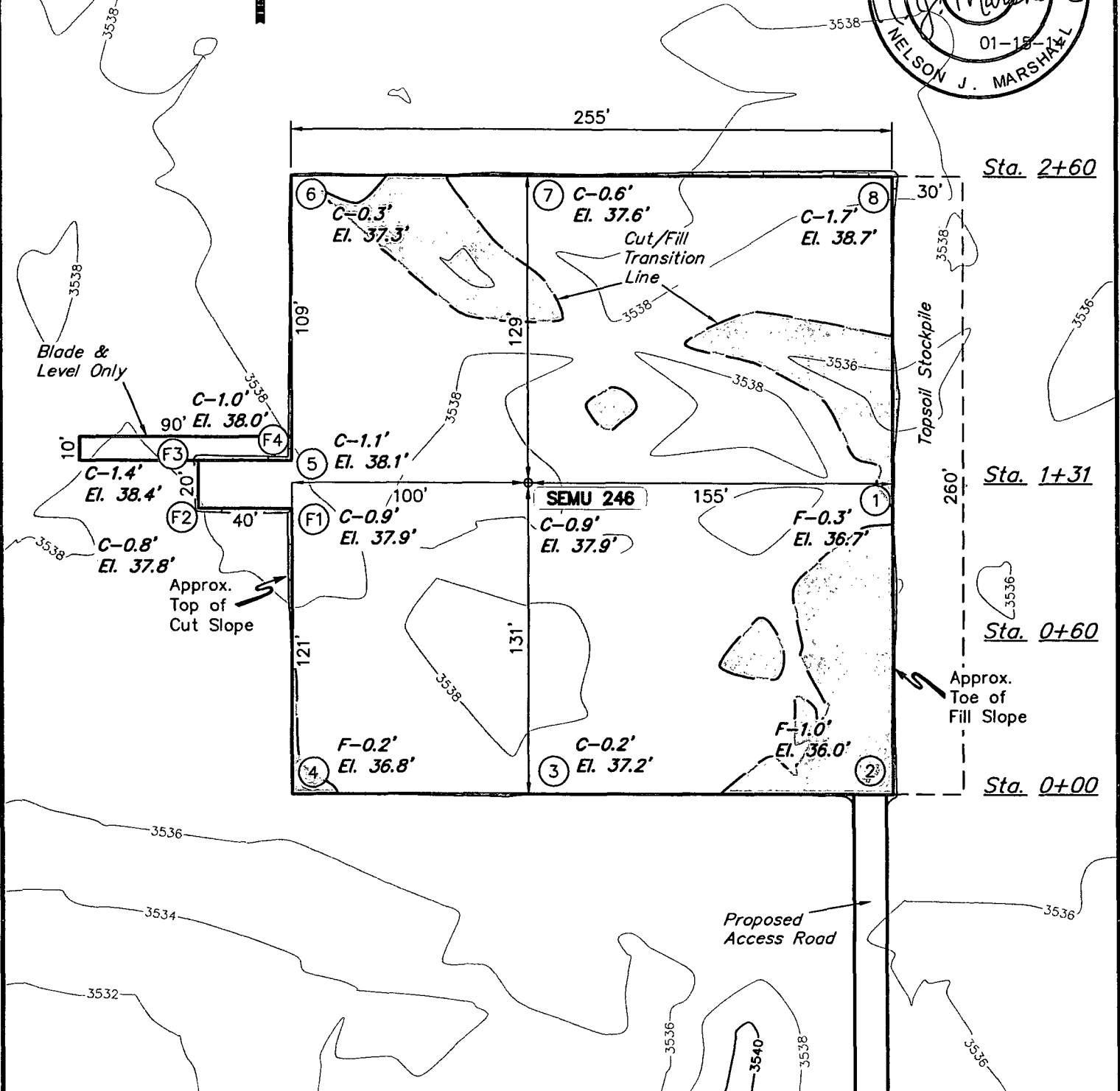
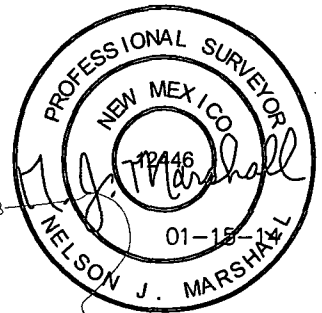
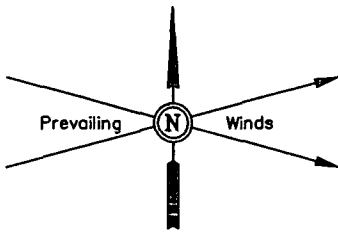
September 13, 2013

Date of Survey
Signature and Seal of Professional Surveyor:



Certificate Number:

7m.
AUG 07 2014



ELEV. UNGRADED GROUND AT LOC. STAKE = 3537.9' FINISHED GRADE ELEV. AT LOC. STAKE = 3537.0'

NOTES:

- Flare pit is to be located a min. of 100' from the well head.
- Construct diversion ditches as needed.
- Underground utilities shown on this sheet are for visualization purposes only, actual locations to be determined prior to construction.

ConocoPhillips

ConocoPhillips Company

SEMU 246
SECTION 19, T20S, R38E, N.M.P.M.
1330' FSL 1464' FEL

DRAWN BY: J.W.

SCALE: 1" = 60'

REV: 01-15-14 B.D.H.

DATE: 09-18-13

REV: 12-02-13 C.A.G.

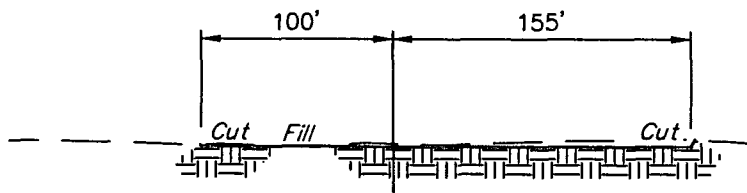
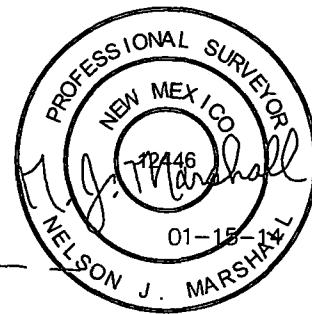
LOCATION LAYOUT

FIGURE #1

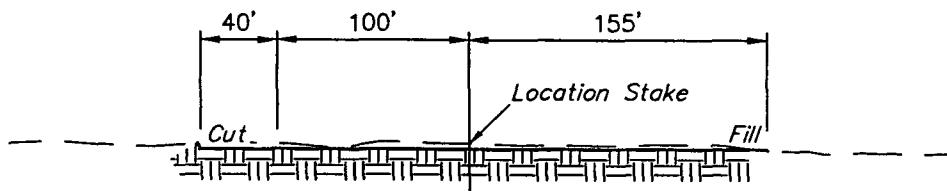


Corporate Office * 85 South 200 East
Vernal, UT 84078 * (435) 789-1017

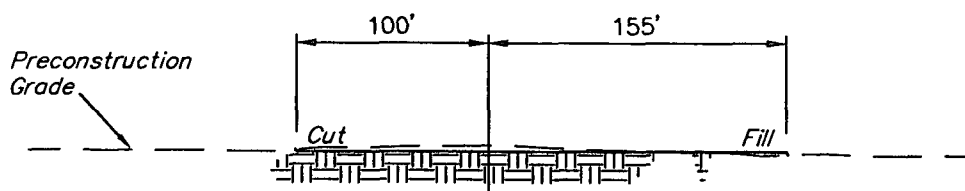
1" = 40'
X-Section
Scale
1" = 100'



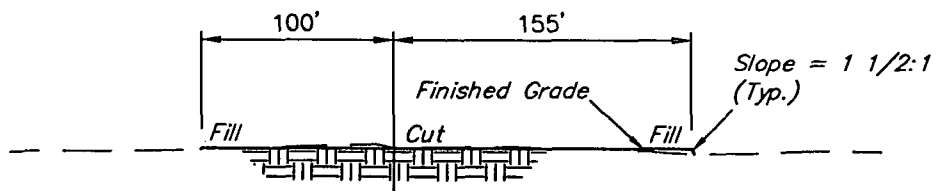
STA. 2+60



STA. 1+31



STA. 0+65



STA. 0+00

APPROXIMATE EARTHWORK QUANTITIES		APPROXIMATE SURFACE DISTURBANCE AREAS		
(6") TOPSOIL STRIPPING	1,260 Cu. Yds.		DISTANCE	ACRES
REMAINING LOCATION	570 Cu. Yds.	WELL SITE DISTURBANCE	NA	±1.738
TOTAL CUT	1,830 Cu. Yds.	ACCESS ROAD DISTURBANCE	±568.69'	±0.261
FILL	570 Cu. Yds.	PIPELINE DISTURBANCE	±4475.57'	±0.616
EXCESS MATERIAL	1,260 Cu. Yds.	POWER LINE DISTURBANCE	±603.62'	±0.139
TOPSOIL	1,260 Cu. Yds.	TOTAL DISTURBANCE	±5647.88'	±2.754
EXCESS UNBALANCE (After Interim Rehabilitation)	0 Cu. Yds.			

NOTES:

- Fill quantity includes 5% for compaction.
- Topsoil should not be stripped below finished grade on substructure area.

ConocoPhillips

ConocoPhillips Company

SEMU 246
SECTION 19, T20S, R38E, N.M.P.M.
1330' FSL 1464' FEL

DRAWN BY: J.W.

SCALE: AS SHOWN

REV: 01-15-14 B.D.H.

DATE: 09-18-13

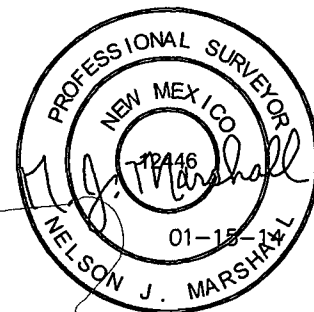
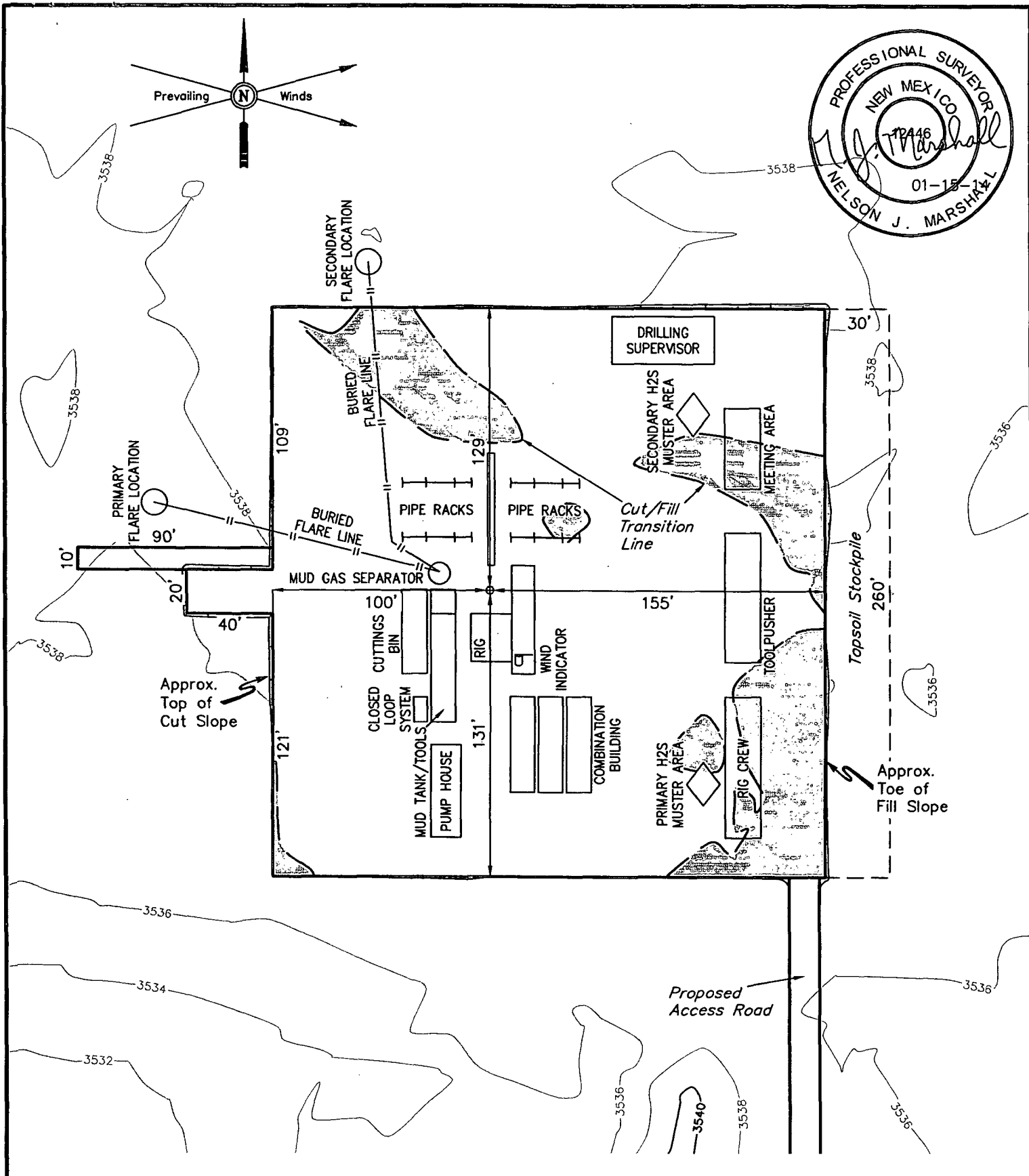
REV: 12-30-13 B.D.H.

TYPICAL CROSS SECTIONS

FIGURE #2



Corporate Office * 85 South 200 East
Vernal, UT 84078 * (435) 789-1017



NOTES:
 • Flare pit is to be located a min. of 160' from the well head.

ConocoPhillips

ConocoPhillips Company

SEMU 246
 SECTION 19, T20S, R38E, N.M.P.M.
 1330' FSL 1464' FEL

DRAWN BY: J.W.

SCALE: 1" = 60'

DATE: 09-18-13

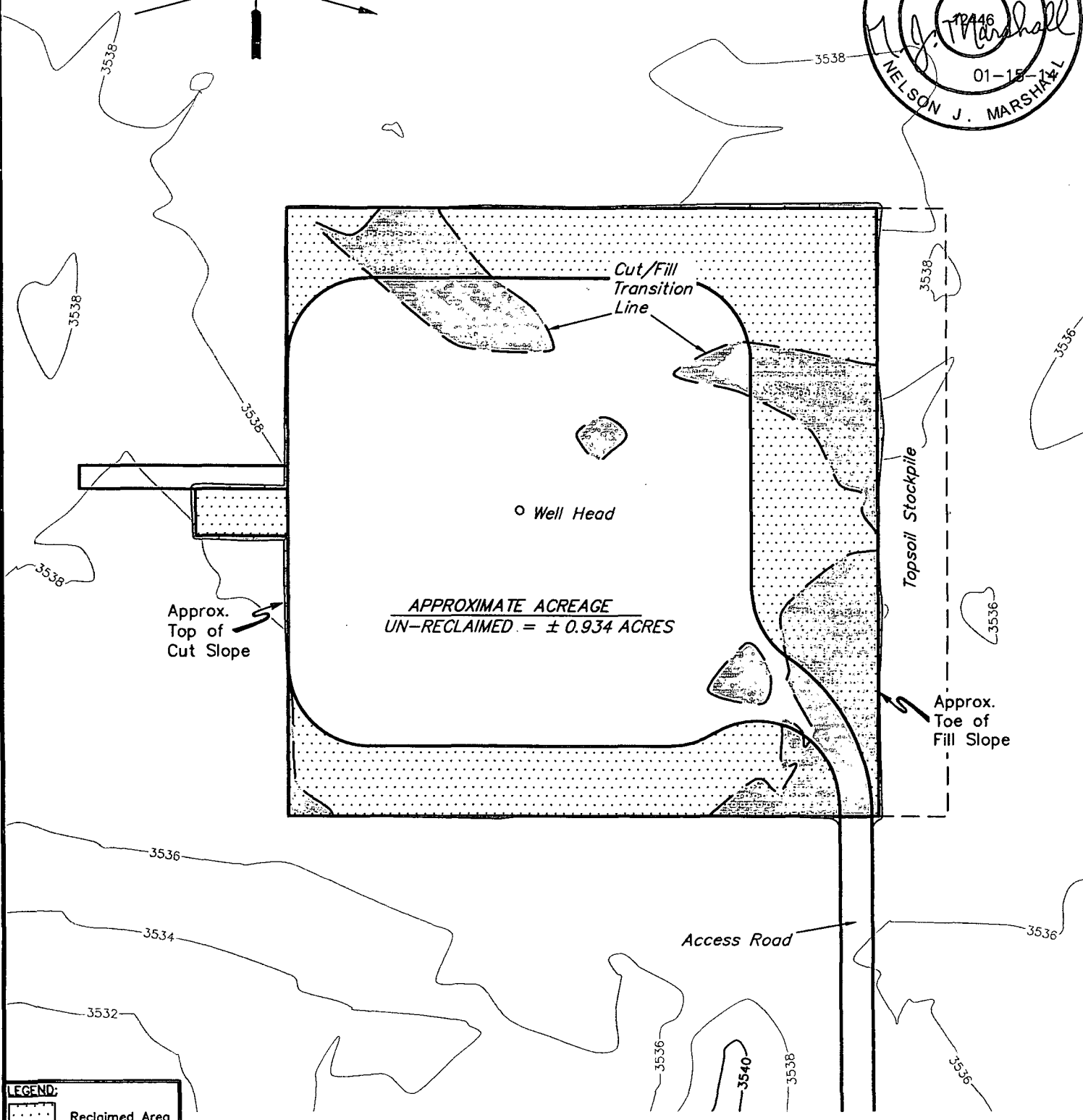
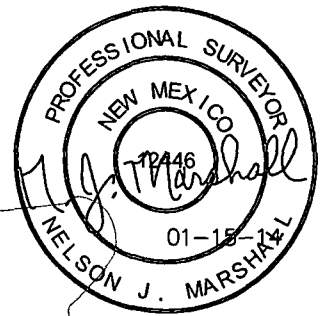
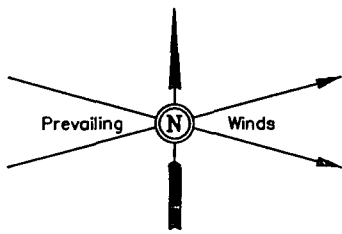
REV: 01-15-14 B.D.H.

Corporate Office * 85 South 200 East
 Vernal, UT 84078 * (435) 789-1017



TYPICAL RIG LAYOUT

FIGURE #3



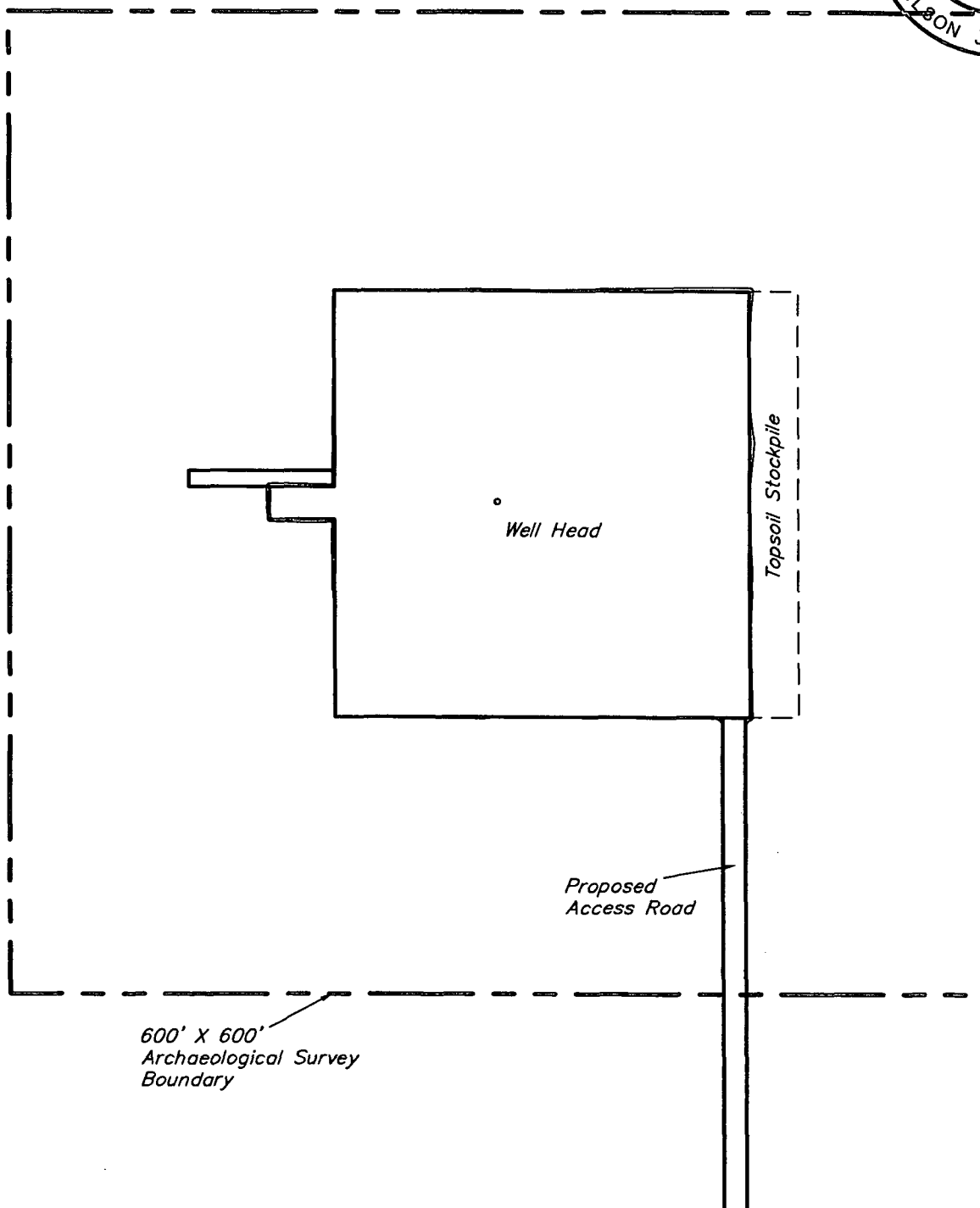
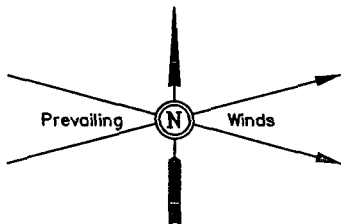
APPROXIMATE ACREAGE
UN-RECLAIMED = ± 0.934 ACRES

LEGEND:
 Reclaimed Area

NOTES:

Corporate Office * 85 South 200 East
Vernal, UT 84078 * (435) 789-1017

ConocoPhillips	ConocoPhillips Company	
SEMU 246 SECTION 19, T20S, R38E, N.M.P.M. 1330' FSL 1464' FEL		
DRAWN BY: J.W.	SCALE: 1" = 60'	
DATE: 09-18-13	REV: 01-15-14 B.D.H.	
RECLAMATION DIAGRAM		FIGURE #4



NOTES:

ConocoPhillips

ConocoPhillips Company

SEMU 246
SECTION 19, T20S, R38E, N.M.P.M.
1330' FSL 1464' FEL

DRAWN BY: J.W.

SCALE: 1" = 100'

DATE: 09-18-13

REV: 01-15-14 B.D.H.



Corporate Office * 85 South 200 East
Vernal, UT 84078 * (435) 789-1017

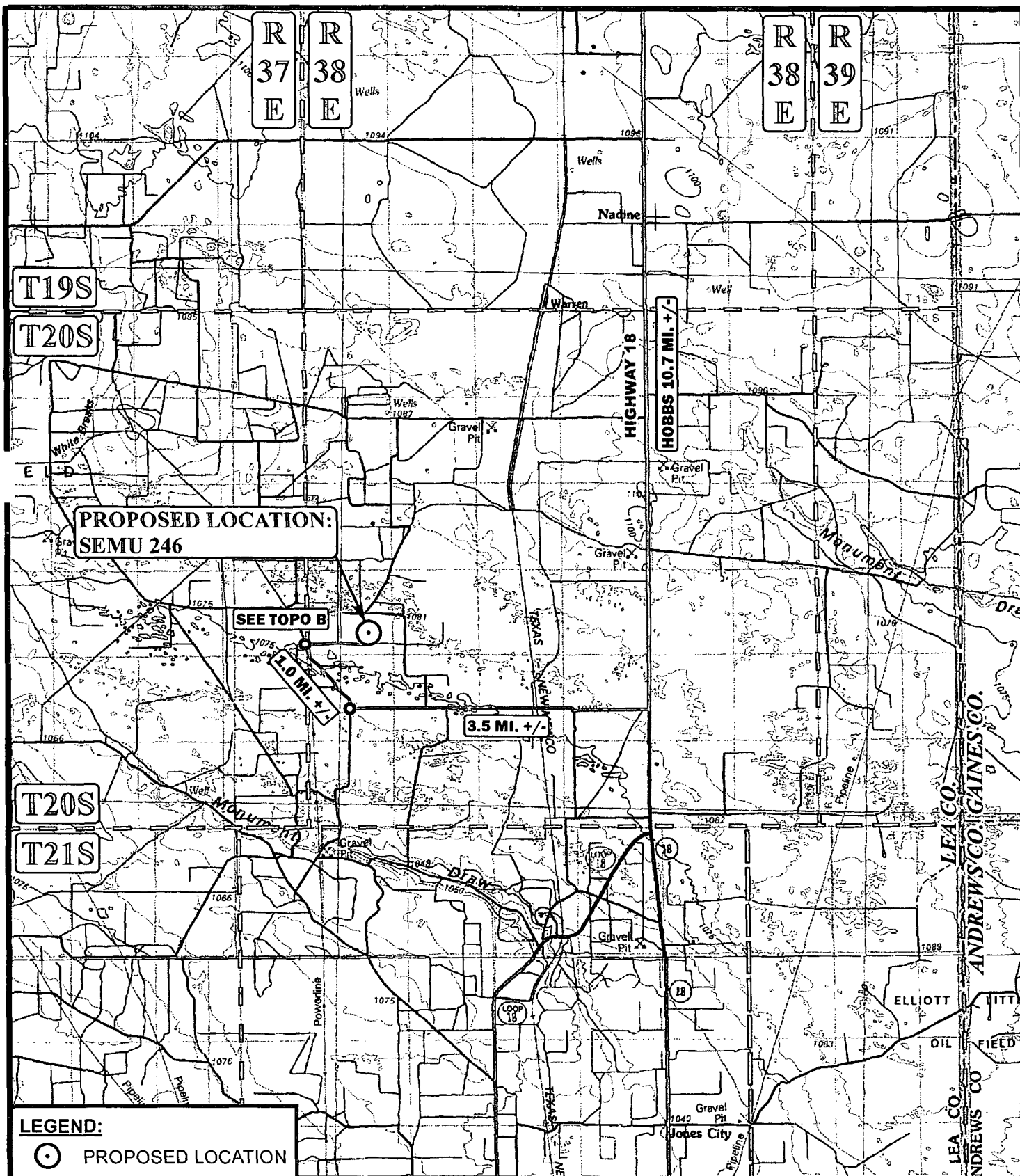
**ARCHAEOLOGICAL SURVEY
BOUNDARY**

FIGURE #5

ConocoPhillips Company
SEMU 246
SECTION 19, T20S, R38E, N.M.P.M.

BEGINNING AT THE INTERSECTION OF U.S. HIGHWAY 62/U.S. HIGHWAY 180 AND HIGHWAY 18, PROCEED IN A SOUTHERLY DIRECTION FROM HOBBS, NEW MEXICO ALONG HIGHWAY 18 APPROXIMATELY 10.7 MILES TO THE JUNCTION OF THIS ROAD AND AN EXISTING ROAD TO THE WEST; TURN RIGHT AND PROCEED IN A WESTERLY DIRECTION APPROXIMATELY 3.5 MILES TO THE JUNCTION OF THIS ROAD AND AN EXISTING ROAD TO THE NORTH; TURN RIGHT AND PROCEED IN A NORTHERLY, THEN NORTHWESTERLY DIRECTION APPROXIMATELY 1.0 MILES TO THE JUNCTION OF THIS ROAD AND AN EXISTING ROAD TO THE EAST; TURN RIGHT AND PROCEED IN AN EASTERLY DIRECTION APPROXIMATELY 0.8 MILES TO THE BEGINNING OF THE PROPOSED ACCESS TO THE NORTH; FOLLOW ROAD FLAGS IN A NORTHERLY DIRECTION APPROXIMATELY 569' TO THE PROPOSED LOCATION.

TOTAL DISTANCE FROM HOBBS, NEW MEXICO TO THE PROPOSED LOCATION IS APPROXIMATELY 16.1 MILES.



**PROPOSED LOCATION:
SEMU 246**

SEE TOPO B

2.0 MI. +/-

3.5 MI. +/-

HOBBS 10.7 MI. +/-

LEGEND:



PROPOSED LOCATION

SCALE: 1:100,000

REV: 01-14-15 L.S.

DRAWN BY: J.L.H.

DATE DRAWN: 09-18-13

N

ConocoPhillips

ConocoPhillips Company

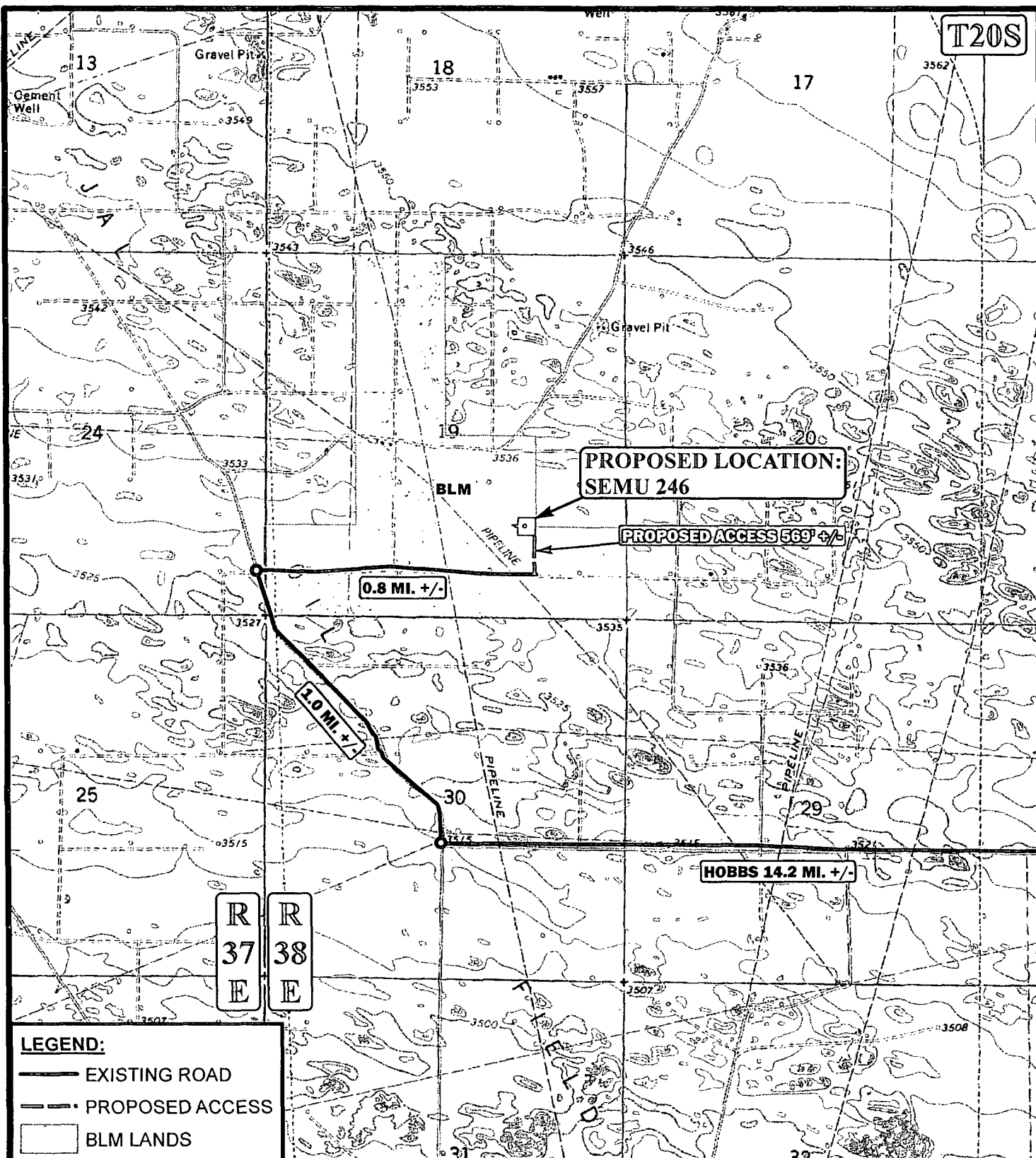
**SEMU 246
SECTION 19, T20S, R38E, N.M.P.M.
1330' FSL 1464' FEL**

ACCESS ROAD MAP

TOPO A



Corporate Office * 85 South 200 East
Vernal, UT 84078 * (435) 789-1017



LEGEND:

- EXISTING ROAD
- PROPOSED ACCESS
- BLM LANDS

*PARCEL DATA SHOWN HAS BEEN OBTAINED FROM VARIOUS SOURCES AND SHOULD BE USED FOR MAPPING, GRAPHIC AND PLANNING PURPOSES ONLY. NO WARRANTY IS MADE BY UINAH ENGINEERING & LAND SURVEYING (UELS) FOR ACCURACY OF THE PARCEL DATA.

SCALE: 1" = 2000'

REV: 01-14-15 L.S.

DRAWN BY: J.L.H.

DATE DRAWN: 09-18-13



ConocoPhillips

ConocoPhillips Company

SEMU 246
SECTION 19, T20S, R38E, N.M.P.M.
1330' FSL 1464' FEL

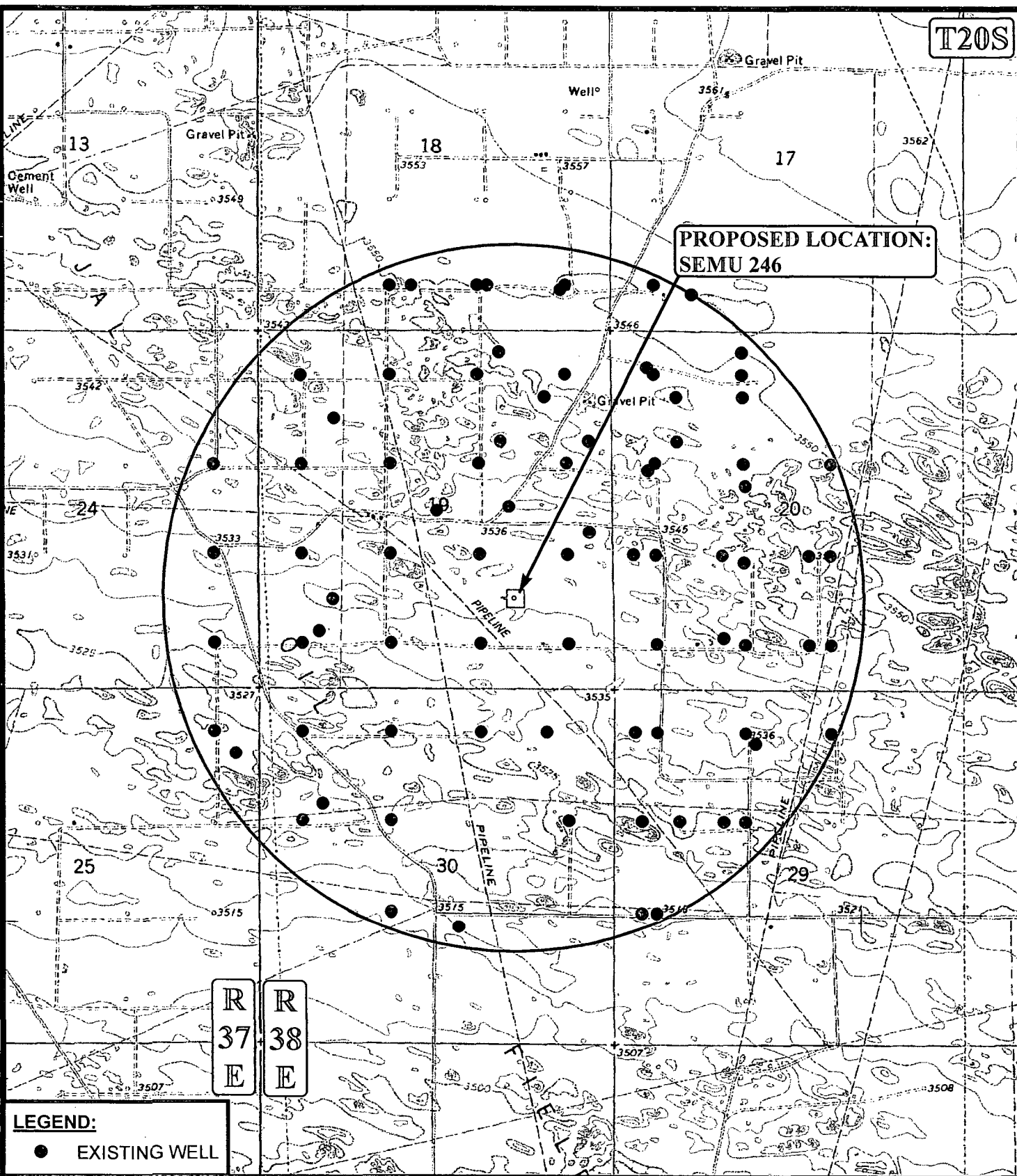
ACCESS ROAD MAP

TOPO B



Corporate Office * 85 South 200 East
Vernal, UT 84078 * (435) 789-1017

T20S



LEGEND:

● EXISTING WELL

SCALE: 1" = 2000'
 DRAWN BY: J.L.H.
 DATE DRAWN: 09-18-13

R
37
E

R
38
E



ConocoPhillips

ConocoPhillips Company

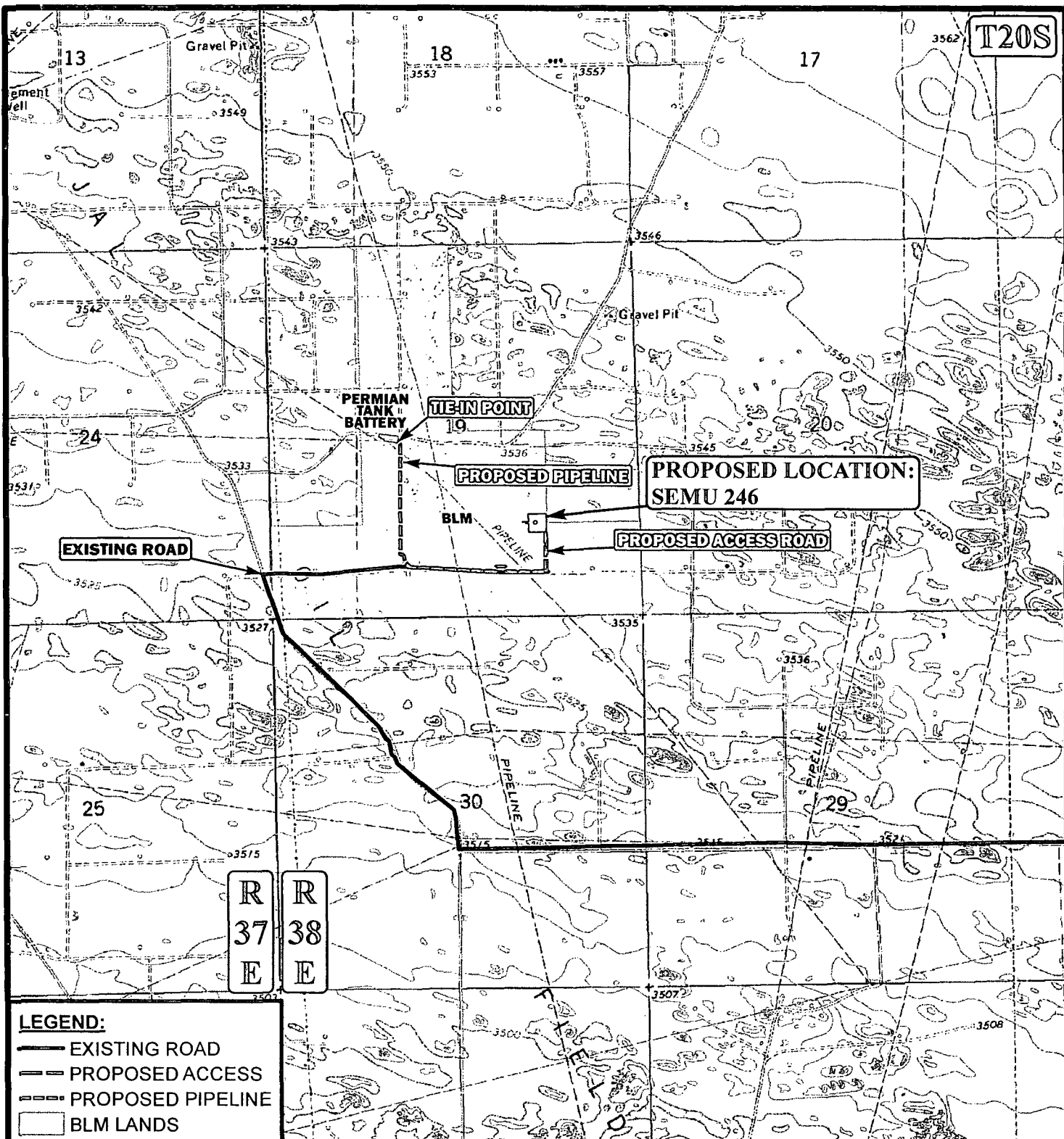
SEMU 246
 SECTION 19, T20S, R38E, N.M.P.M.
 1330' FSL 1464' FEL

TOPOGRAPHIC MAP

TOPO C



Corporate Office * 85 South 200 East
 Vernal, UT 84078 * (435) 789-1017



APPROXIMATE TOTAL PIPELINE DISTANCE 4,476' +/-

*PARCEL DATA SHOWN HAS BEEN OBTAINED FROM VARIOUS SOURCES AND SHOULD BE USED FOR MAPPING, GRAPHIC AND PLANNING PURPOSES ONLY. NO WARRANTY IS MADE BY UINAH ENGINEERING & LAND SURVEYING (UELS) FOR ACCURACY OF THE PARCEL DATA.

SCALE: 1" = 2000'

REV. 01-14-15 L.S.

DRAWN BY: J.L.H.

DATE DRAWN: 09-18-13



ConocoPhillips

ConocoPhillips Company

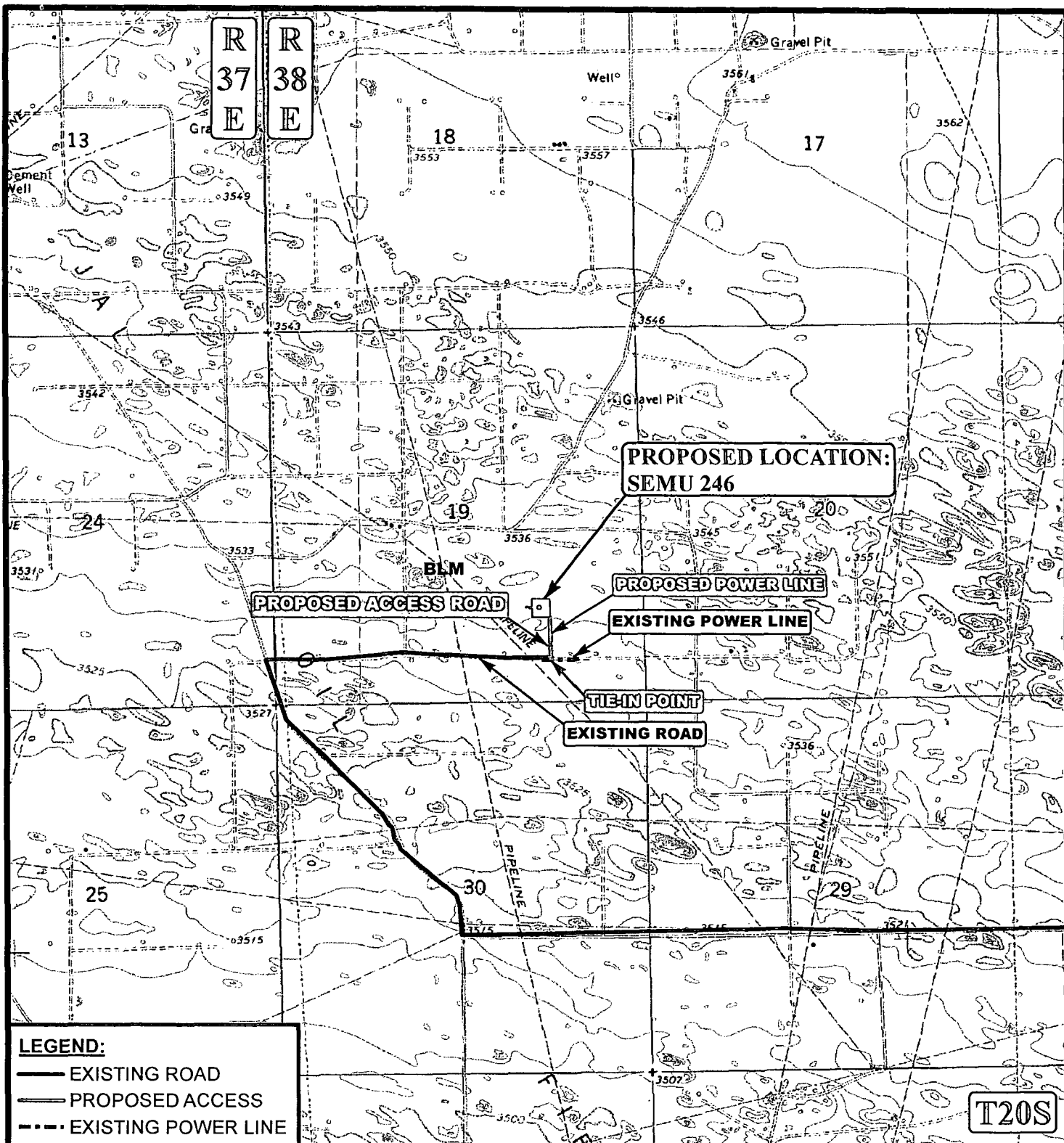
SEMU 246
SECTION 19, T20S, R38E, N.M.P.M.
1330' FSL 1464' FEL

PIPELINE MAP

TOPO D



Corporate Office * 85 South 200 East
Vernal, UT 84078 * (435) 789-1017



APPROXIMATE TOTAL POWER LINE DISTANCE = 604' +/-

*PARCEL DATA SHOWN HAS BEEN OBTAINED FROM VARIOUS SOURCES AND SHOULD BE USED FOR MAPPING, GRAPHIC AND PLANNING PURPOSES ONLY. NO WARRANTY IS MADE BY UINAH ENGINEERING & LAND SURVEYING (UELS) FOR ACCURACY OF THE PARCEL DATA.

SCALE: 1" = 2000'

REV: 01-14-15 L.S.

DRAWN BY: J.M.C.

DATE DRAWN: 12-26-13

N

ConocoPhillips

ConocoPhillips Company

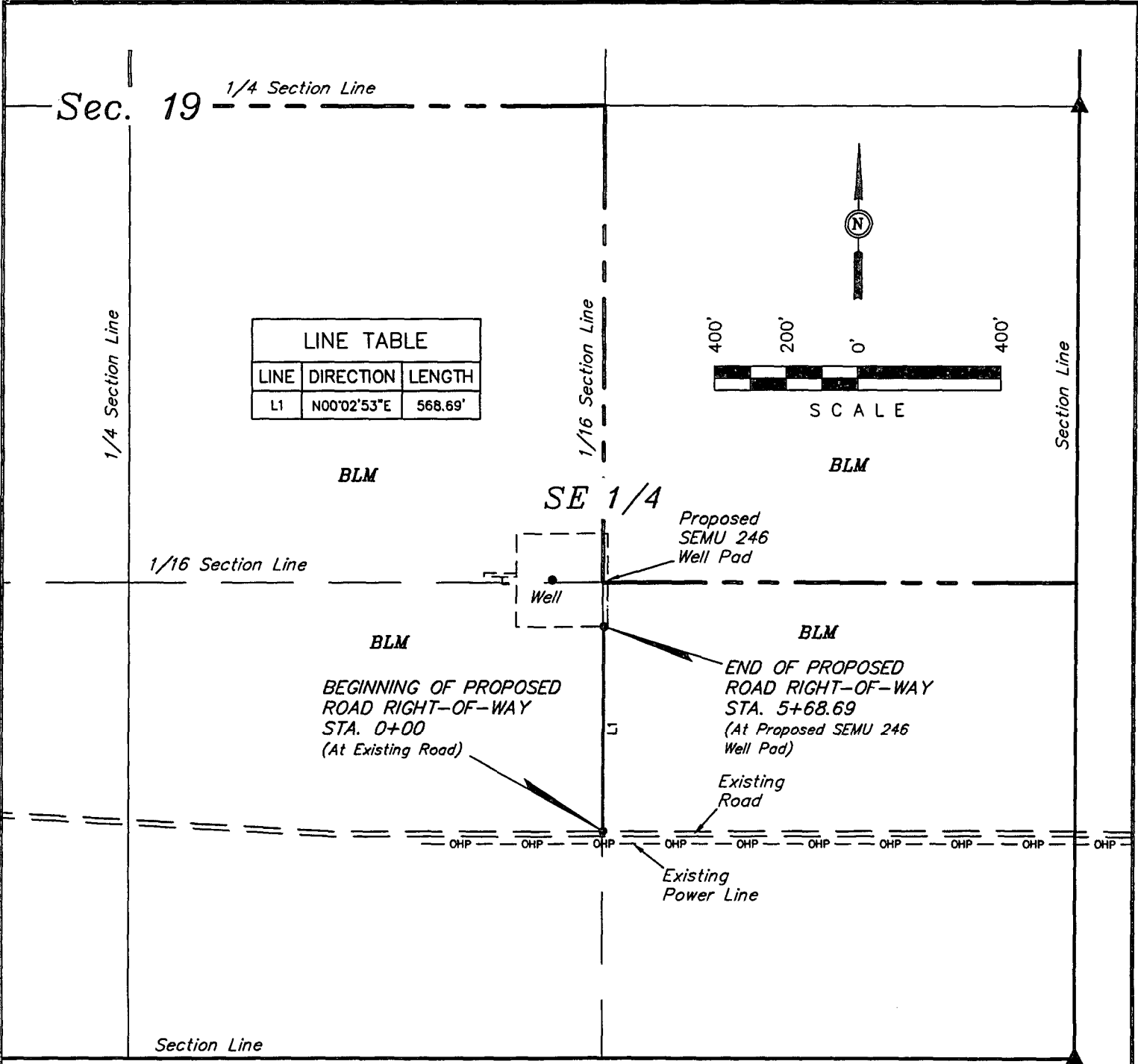
SEMU 246
SECTION 19, T20S, R38E, N.M.P.M.
1330' FSL 1464' FEL

POWER LINE MAP

TOPO E



Corporate Office * 85 South 200 East
 Vernal, UT 84078 * (435) 789-1017



ROAD RIGHT-OF-WAY
DESCRIPTION

A 20' WIDE RIGHT-OF-WAY 10' ON EACH SIDE OF THE FOLLOWING DESCRIBED CENTERLINE.

BEGINNING AT A POINT IN THE SE 1/4 SE 1/4 OF SECTION 19, T20S, R38E, N.M.P.M., WHICH BEARS N47°42'37"W 1783.66' FROM THE SOUTHEAST CORNER OF SAID SECTION 19, THENCE N00°02'53"E 568.69' TO A POINT IN THE SE 1/4 SE 1/4 OF SAID SECTION 19, WHICH BEARS N64°25'56"W 1463.24' FROM THE SOUTHEAST CORNER OF SAID SECTION 19. THE SIDE LINES OF SAID DESCRIBED RIGHT-OF-WAY BEING SHORTENED OR ELONGATED TO MEET THE GRANTOR'S PROPERTY LINES. BASIS OF BEARINGS IS A G.P.S. OBSERVATION. CONTAINS 0.261 ACRES MORE OR LESS.

▲ = SECTION CORNERS LOCATED.

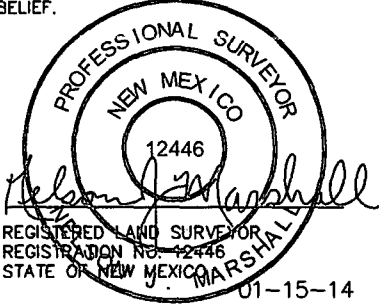
RIGHT-OF-WAY LENGTHS			
PROPERTY OWNER	FEET	ACRES	RODS
BLM	568.69	0.261	34.47

BEGINNING OF ROAD STA. 0+00 BEARS N47°42'37"W 1783.66' FROM THE SOUTHEAST CORNER OF SECTION 19, T20S, R38E, N.M.P.M.

END OF ROAD STA. 5+68.69 BEARS N64°25'56"W 1463.24' FROM THE SOUTHEAST CORNER OF SECTION 19, T20S, R38E, N.M.P.M.

CERTIFICATE

THIS IS TO CERTIFY THAT THE ABOVE PLAT WAS PREPARED FROM FIELD NOTES OF ACTUAL SURVEYS MADE BY ME OR UNDER MY SUPERVISION AND THAT THE SAME ARE TRUE AND CORRECT TO THE BEST OF MY KNOWLEDGE AND BELIEF.



NOTES:
• The maximum grade of existing ground for the proposed access road is ±1%.

ConocoPhillips

ConocoPhillips Company

SEMU 246
SECTION 19, T20S, R38E, N.M.P.M.
1330' FSL 1464' FEL

DRAWN BY: J.W.

SCALE: 1" = 400'

DATE: 09-18-13

REV: 01-15-14 B.D.H.

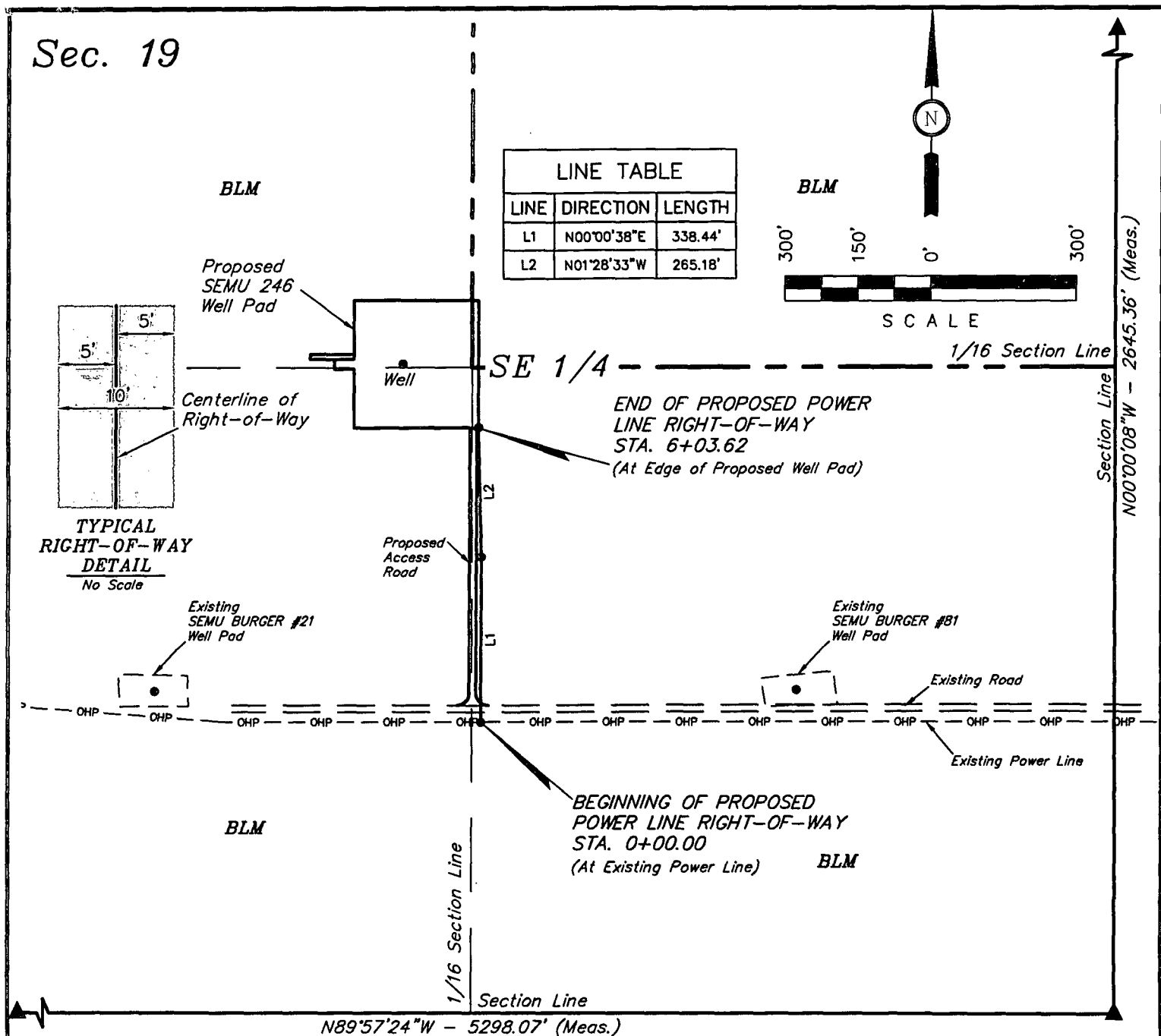
ACCESS ROAD R-O-W

FIGURE #6



Corporate Office * 85 South 200 East
Vernal, UT 84078 * (435) 789-1017

Sec. 19



POWER LINE RIGHT-OF-WAY DESCRIPTION

A 10' WIDE RIGHT-OF-WAY 5' ON EACH SIDE OF THE FOLLOWING DESCRIBED CENTERLINE.

BEGINNING AT A POINT IN THE SE 1/4 SE 1/4 OF SECTION 19, T20S, R38E, N.M.P.M., WHICH BEARS N65°23'33"W 1432.88' FROM THE SOUTHEAST CORNER OF SAID SECTION 19, THENCE N00°00'38"E 338.44'; THENCE N01°28'33"W 265.18' TO A POINT IN THE SE 1/4 SE 1/4 OF SAID SECTION 19, WHICH BEARS N47°29'40"W 1776.29' FROM THE SOUTHEAST CORNER OF SAID SECTION 19. THE SIDE LINES OF SAID DESCRIBED RIGHT-OF-WAY BEING SHORTENED OR ELONGATED TO MEET THE GRANTOR'S PROPERTY LINES. BASIS OF BEARINGS IS A G.P.S. OBSERVATION. CONTAINS 0.139 ACRES MORE OR LESS.

BEGINNING OF POWER LINE STA. 0+00 BEARS
N65°23'33"W 1432.88' FROM THE SOUTHEAST
CORNER OF SECTION 19, T20S, R38E,
N.M.P.M.

END OF POWER LINE STA. 6+03.62 BEARS
N47°29'40"W 1776.29' FROM THE SOUTHEAST
CORNER OF SECTION 19, T20S, R38E,
N.M.P.M.

RIGHT-OF-WAY LENGTHS			
DESCRIPTION	FEET	ACRES	RODS
BLM	603.62	0.139	36.58

▲ = SECTION CORNERS LOCATED.

THIS IS TO CERTIFY THAT THE ABOVE MAP WAS PREPARED FROM
FIELD NOTES OF ACTUAL SURVEYS MADE BY ME OR UNDER MY
SUPERVISION AND THAT THE SAME ARE TRUE AND CORRECT TO THE
BEST OF MY KNOWLEDGE AND BELIEF.

REGISTERED LAND SURVEYOR
REGISTRATION NO. 12446
STATE OF NEW MEXICO

NOTES:

ConocoPhillips

ConocoPhillips Company

SEMU 246
SECTION 19, T20S, R38E, N.M.P.M.
1330' FSL 1464' FEL

DRAWN BY: B.D.H.

SCALE: 1" = 300'

DATE: 12-30-13

REVISÉD: 01-15-14

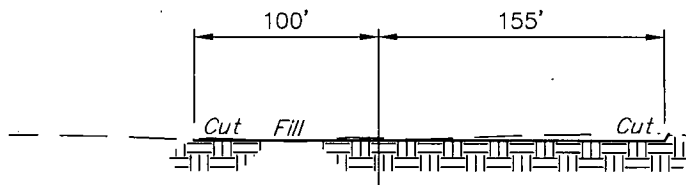
POWER LINE R-O-W

FIGURE #8

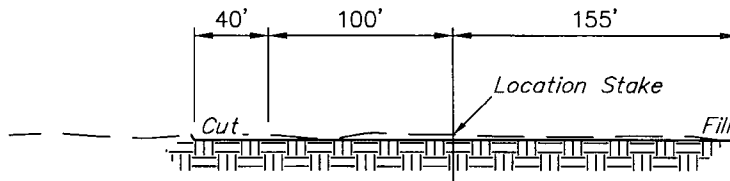


**Corporate Office * 85 South 200 East
Vernal, UT 84078 * (435) 789-1017**

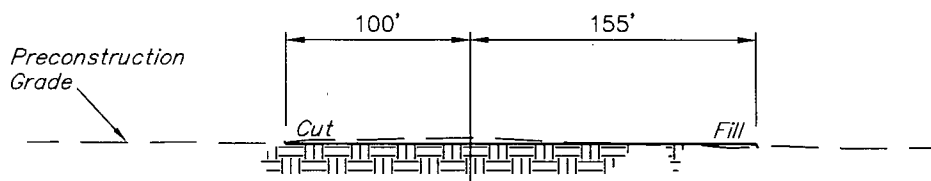
1" = 40'
X-Section
Scale
1" = 100'



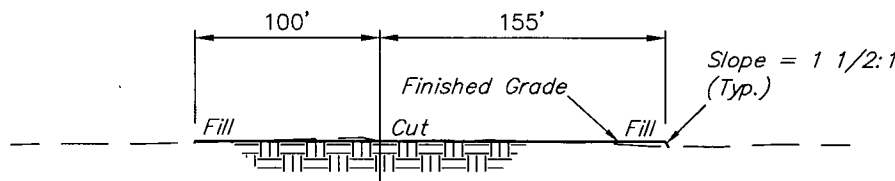
STA. 2+60



STA. 1+30



STA. 0+65



STA. 0+00

APPROXIMATE EARTHWORK QUANTITIES		APPROXIMATE SURFACE DISTURBANCE AREAS		
(6") TOPSOIL STRIPPING	1,260 Cu. Yds.		DISTANCE	ACRES
REMAINING LOCATION	570 Cu. Yds.	WELL SITE DISTURBANCE	NA	±1.738
TOTAL CUT	1,830 Cu. Yds.	ACCESS ROAD DISTURBANCE	±568.69'	±0.261
FILL	570 Cu. Yds.	PIPELINE DISTURBANCE	±4475.57'	±0.616
EXCESS MATERIAL	1,260 Cu. Yds.	POWER LINE DISTURBANCE	±603.62'	±0.139
TOPSOIL	1,260 Cu. Yds.	TOTAL DISTURBANCE	±5647.88'	±2.754
EXCESS UNBALANCE (After Interim Rehabilitation)	0 Cu. Yds.			

- NOTES:
- Fill quantity includes 5% for compaction.
 - Topsoil should not be stripped below finished grade on substructure area.

ConocoPhillips

ConocoPhillips Company

SEMU 246
SECTION 19, T20S, R38E, N.M.P.M.
1329' FSL 1464' FEL

DRAWN BY: J.W.

SCALE: AS SHOWN

DATE: 09-18-13

REV: 12-30-13 B.D.H.



Corporate Office * 85 South 200 East
Vernal, UT 84078 * (435) 789-1017

TYPICAL CROSS SECTIONS

FIGURE #2