

District I  
1625 N. French Dr., Hobbs, NM 88240  
Phone: (505) 393-6161 Fax: (505) 393-0720  
District II  
511 S. First St., Artesia, NM 88210  
Phone: (505) 748-1283 Fax: (505) 748-9720  
District III  
1000 Rio Huerfano Road, Aztec, NM 87410  
Phone: (505) 334-6178 Fax: (505) 334-6170  
District IV  
1220 S. St. Francis Dr., Santa Fe, NM 87505  
Phone: (505) 476-3469 Fax: (505) 476-3462

State of New Mexico  
Energy, Minerals & Natural Resources Department  
OIL CONSERVATION DIVISION  
1220 South St. Francis Dr.  
Santa Fe, NM 87505

HOBBS OCD

Form C-102

Revised August 1, 2011

Submit one copy to appropriate

District Office

RECEIVED

☐ AMENDED REPORT

WELL LOCATION AND ACREAGE DEDICATION PLAT

<sup>1</sup> API Number 70-025-42 026		<sup>2</sup> Pool Code 65350		<sup>3</sup> Pool Name Youngs Bone Spring, North	
<sup>4</sup> Property Code 313571		<sup>5</sup> Property Name WOLF FEDERAL.			<sup>6</sup> Well Number 1
<sup>7</sup> OGRID No. 13837		<sup>8</sup> Operator Name MACK ENERGY CORPORATION			<sup>9</sup> Elevation 3875.3

" Surface Location

UL or lot no.	Section	Township	Range	Lot Idn	Feet from the	North/South line	Feet from the	East/West line	County
F	3	18 S	32 E		2310	NORTH	1650	WEST	LEA

" Bottom Hole Location If Different From Surface

UL or lot no.	Section	Township	Range	Lot Idn	Feet from the	North/South line	Feet from the	East/West line	County

<sup>12</sup> Dedicated Acres 40	<sup>13</sup> Joint or Infill	<sup>14</sup> Consolidation Code	<sup>15</sup> Order No.
-------------------------------------	-------------------------------	----------------------------------	-------------------------

No allowable will be assigned to this completion until all interests have been consolidated or a non-standard unit has been approved by the division.

<p>N89°33'14"E 2625.16 FT</p> <p>NW CORNER SEC. 3 LAT. = 32.7837991°N LONG. = 103.7627737°W NMSP EAST (FT) N = 649351.08 E = 716684.29</p> <p>LOT 4</p>		<p>N/4 CORNER SEC. 3 LAT. = 32.7838161°N LONG. = 103.7542340°W NMSP EAST (FT) N = 649371.51 E = 719308.75</p> <p>LOT 3</p>		<p>NE CORNER SEC. 3 LAT. = 32.7838081°N LONG. = 103.7456354°W NMSP EAST (FT) N = 649383.18 E = 721951.36</p> <p>LOT 2</p>		<p>S/4 CORNER SEC. 3 LAT. = 32.7692513°N LONG. = 103.7542367°W NMSP EAST (FT) N = 644072.53 E = 719336.92</p> <p>LOT 1</p>		<p>E/4 CORNER SEC. 3 LAT. = 32.7764937°N LONG. = 103.7456448°W NMSP EAST (FT) N = 646722.03 E = 721963.25</p> <p>LOT 1</p>	
<p>W/4 CORNER SEC. 3 LAT. = 32.7765197°N LONG. = 103.7628200°W NMSP EAST (FT) N = 646702.60 E = 718684.34</p> <p>LOT 4</p>		<p>WOLF FEDERAL #1 ELEV. = 3875.3' LAT. = 32.7774620°N (NAD83) LONG. = 103.7574463°W NMSP EAST (FT) N = 647054.38 E = 718333.95</p> <p>SURFACE LOCATION</p>		<p>NOTE: LATITUDE AND LONGITUDE COORDINATES ARE SHOWN USING THE NORTH AMERICAN DATUM OF 1983 (NAD83). LISTED NEW MEXICO STATE PLANE EAST COORDINATES ARE GRID (NAD83). BASIS OF BEARING AND DISTANCES USED ARE NEW MEXICO STATE PLANE EAST COORDINATES MODIFIED TO THE SURFACE.</p>		<p>DATE OF SURVEY MARCH 12, 2014</p>		<p>12797</p>	
<p>SW CORNER SEC. 3 LAT. = 32.7692687°N LONG. = 103.7628244°W NMSP EAST (FT) N = 644064.54 E = 716697.20</p> <p>LOT 4</p>		<p>S/4 CORNER SEC. 3 LAT. = 32.7692513°N LONG. = 103.7542367°W NMSP EAST (FT) N = 644072.53 E = 719336.92</p> <p>LOT 3</p>		<p>SE CORNER SEC. 3 LAT. = 32.7692394°N LONG. = 103.7456562°W NMSP EAST (FT) N = 644063.26 E = 721974.40</p> <p>LOT 2</p>		<p>DATE OF SURVEY MARCH 12, 2014</p>		<p>12797</p>	
<p>S89°49'36"W 2640.35 FT</p>		<p>S89°46'40"W 2638.13 FT</p>		<p>S89°44'49"E 2643.26 FT</p>		<p>S89°42'22"E 2661.81 FT</p>		<p>S89°40'00"W 2649.10 FT</p>	

**" OPERATOR CERTIFICATION**  
I hereby certify that the information contained herein is true and complete to the best of my knowledge and belief, and that this organization either owns a working interest or undivided mineral interest in the land including the proposed bottom hole location or has a right to drill this well at this location pursuant to a contract with an owner of such a mineral or working interest, or to a voluntary pooling agreement or a compulsory pooling order heretofore entered by the division.

*Jerry W. Sherrell* 4-14-2014  
Signature Date

Jerry W. Sherrell  
Printed Name

jerry@mec.com  
E-mail Address

**"SURVEYOR CERTIFICATION**  
I hereby certify that the well location shown on this plat was plotted from field notes of actual surveys made by me or under my supervision, and that the same is true and correct to the best of my belief.

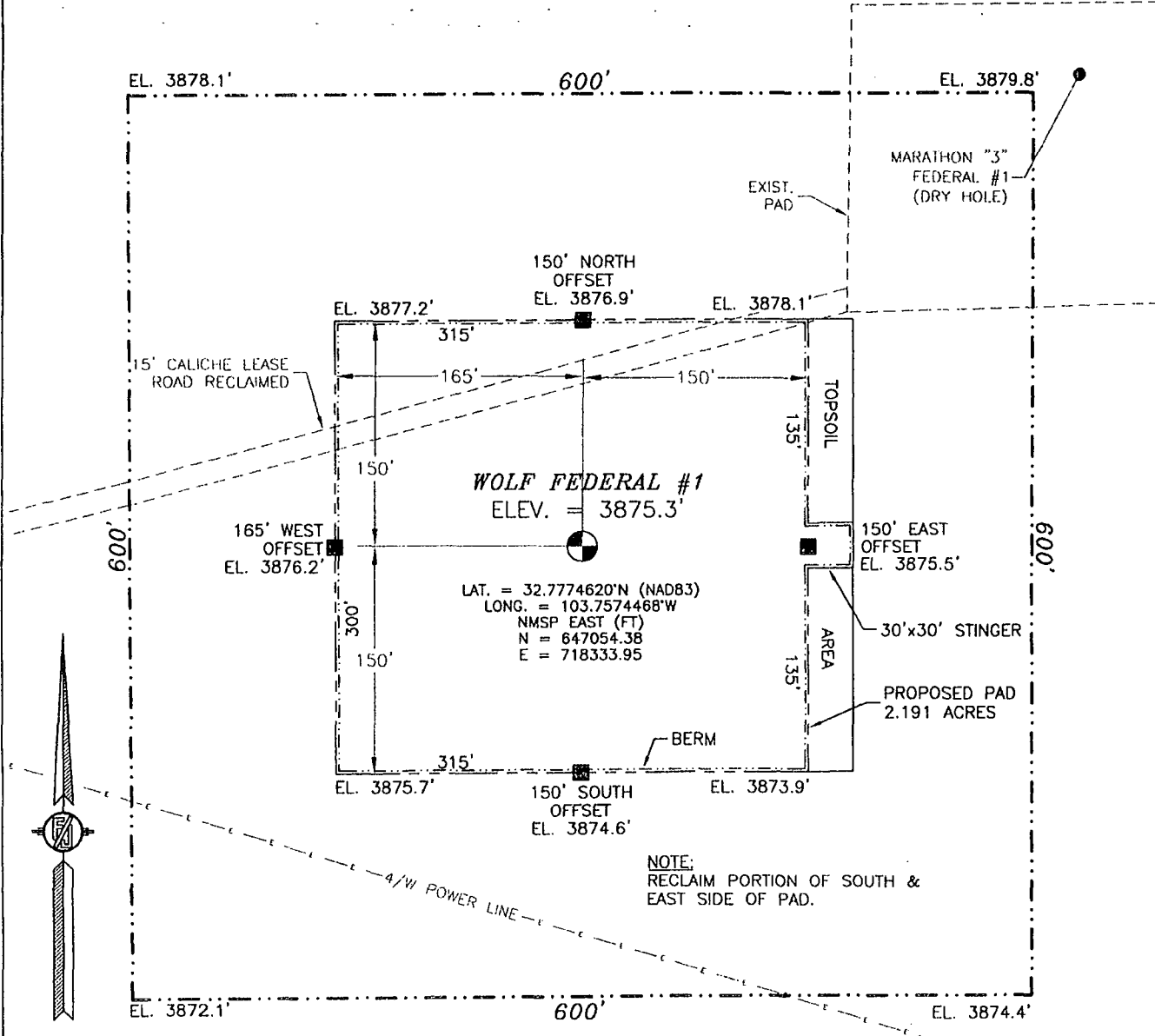
MARCH 12, 2014  
Date of Survey

12797  
Certificate Number F-11, MONTANA, ARIZONA, I.O. PLS 12797  
SURVEY NO. 2655

AUG 08 2014

SECTION 3, TOWNSHIP 18 SOUTH, RANGE 32 EAST, N.M.P.M.  
LEA COUNTY, STATE OF NEW MEXICO  
**SITE MAP**

NOTE: LATITUDE AND LONGITUDE COORDINATES ARE SHOWN USING THE NORTH AMERICAN DATUM OF 1983 (NAD83). LISTED NEW MEXICO STATE PLANE EAST COORDINATES ARE GRID (NAD83). BASIS OF BEARING AND DISTANCES USED ARE NEW MEXICO STATE PLANE EAST COORDINATES MODIFIED TO THE SURFACE



NOTE:  
RECLAIM PORTION OF SOUTH &  
EAST SIDE OF PAD.

010 50 100 200  
SCALE 1" = 100'

**DIRECTIONS TO LOCATION**

FROM THE INTERSECTION OF CR 126 (MALJAMAR) AND STATE HIGHWAY 529 GO SOUTH-SOUTHWEST ON CR 126 FOR APPROX. 0.44 OF A MILE. GO EAST-SOUTHEAST ON 15' CALICHE LEASE ROAD FOR APPROX. 0.85 OF A MILE. GO NORTHEAST ON RECLAIMED 15' CALICHE LEASE ROAD FOR APPROX. 0.17 OF A MILE. LOCATION IS APPROX. 180' SOUTHEAST.

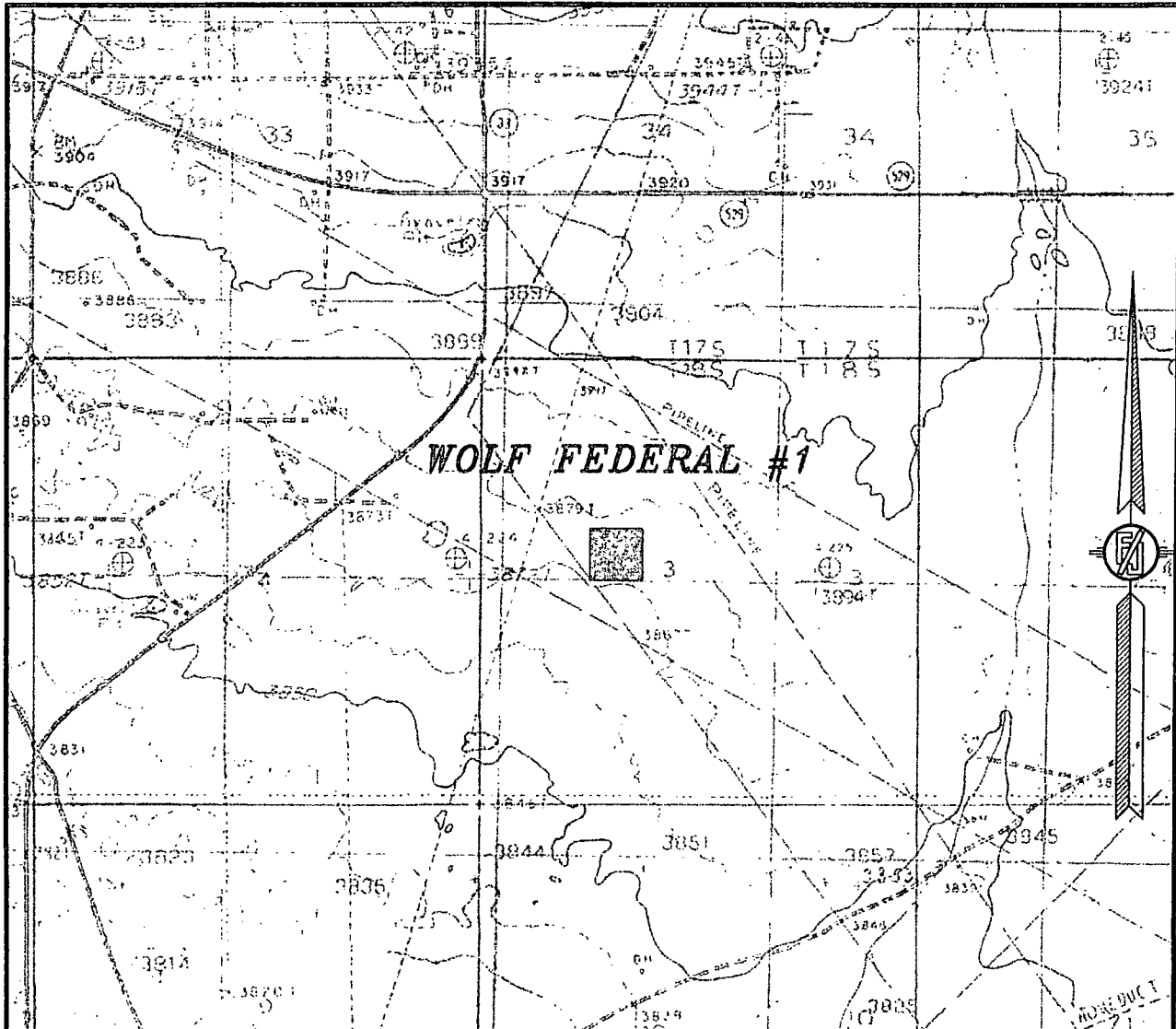
**MACK ENERGY CORPORATION**  
**WOLF FEDERAL #1**  
LOCATED 2310 FT. FROM THE NORTH LINE  
AND 1650 FT. FROM THE WEST LINE OF  
SECTION 3, TOWNSHIP 18 SOUTH,  
RANGE 32 EAST, N.M.P.M.  
LEA COUNTY, STATE OF NEW MEXICO

MARCH 12, 2014

SURVEY NO. 2655

MADRON SURVEYING, INC. 301 SOUTH CANAL CARLSBAD, NEW MEXICO  
(575) 234-3341

SECTION 3, TOWNSHIP 18 SOUTH, RANGE 32 EAST, N.M.P.M.  
LEA COUNTY, STATE OF NEW MEXICO  
LOCATION VERIFICATION MAP



USGS QUAD MAP:  
MALJAMAR & DOG LAKE

NOT TO SCALE

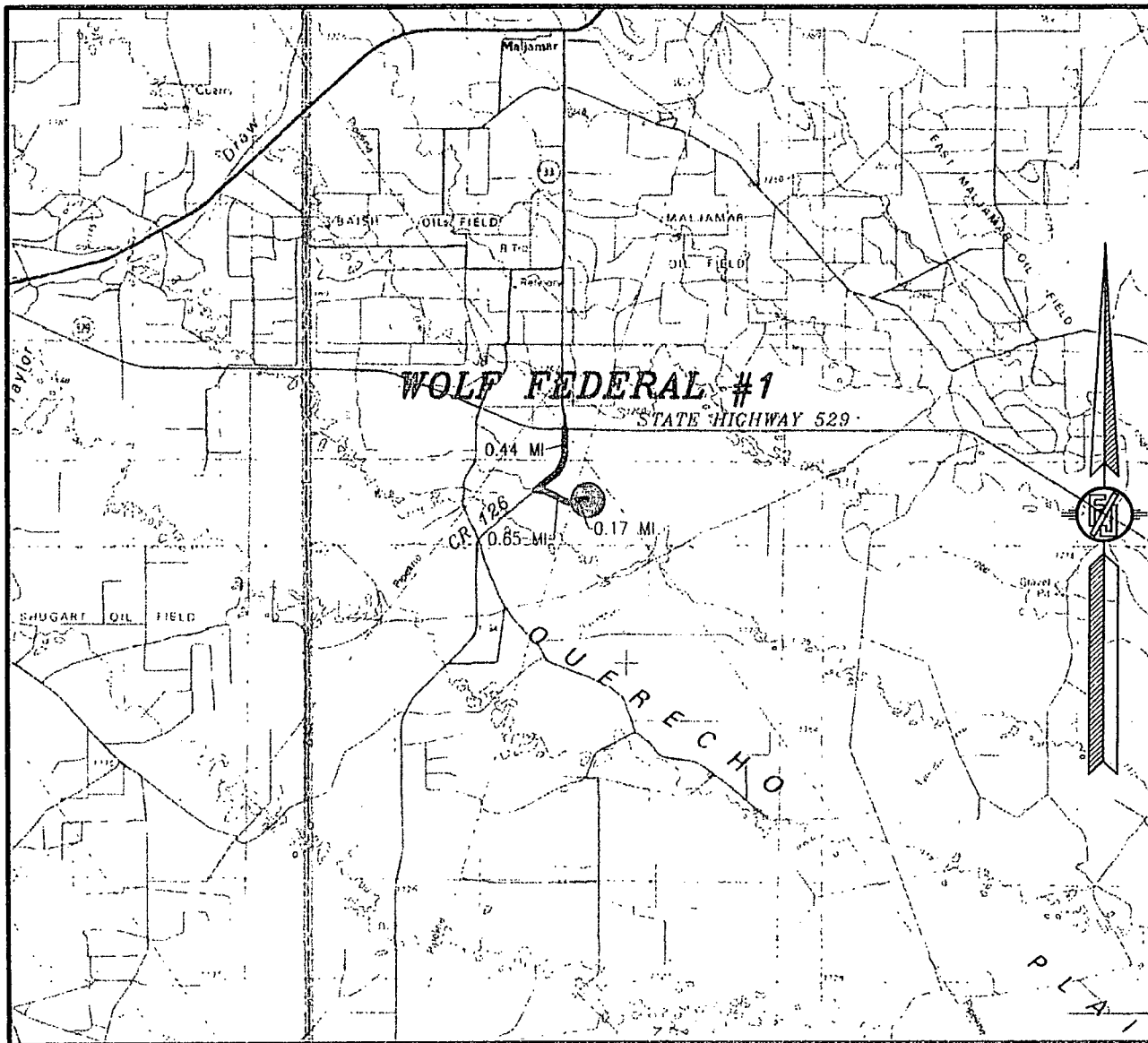
MACK ENERGY CORPORATION  
WOLF FEDERAL #1  
LOCATED 2310 FT. FROM THE NORTH LINE  
AND 1650 FT. FROM THE WEST LINE OF  
SECTION 3, TOWNSHIP 18 SOUTH,  
RANGE 32 EAST, N.M.P.M.  
LEA COUNTY, STATE OF NEW MEXICO

MARCH 12, 2014

SURVEY NO. 2655

MADRON SURVEYING, INC. 301 SOUTH CANAL CARLSBAD, NEW MEXICO  
(575) 734-3341

SECTION 3, TOWNSHIP 18 SOUTH, RANGE 32 EAST, N.M.P.M.  
LEA COUNTY, STATE OF NEW MEXICO  
VICINITY MAP



DISTANCES IN MILES

NOT TO SCALE

MACK ENERGY CORPORATION  
WOLF FEDERAL #1

LOCATED 2310 FT. FROM THE NORTH LINE  
AND 1650 FT. FROM THE WEST LINE OF  
SECTION 3, TOWNSHIP 18 SOUTH,  
RANGE 32 EAST, N.M.P.M.  
LEA COUNTY, STATE OF NEW MEXICO

DIRECTIONS TO LOCATION

FROM THE INTERSECTION OF CR 126 (MALJAMAR) AND STATE HIGHWAY 529 GO SOUTH-SOUTHWEST ON CR 126 FOR APPROX. 0.44 OF A MILE. GO EAST-SOUTHEAST ON 15' CALICHE LEASE ROAD FOR APPROX. 0.65 OF A MILE. GO NORTHEAST ON RECLAIMED 15' CALICHE LEASE ROAD FOR APPROX. 0.17 OF A MILE. LOCATION IS APPROX. 180' SOUTHEAST.

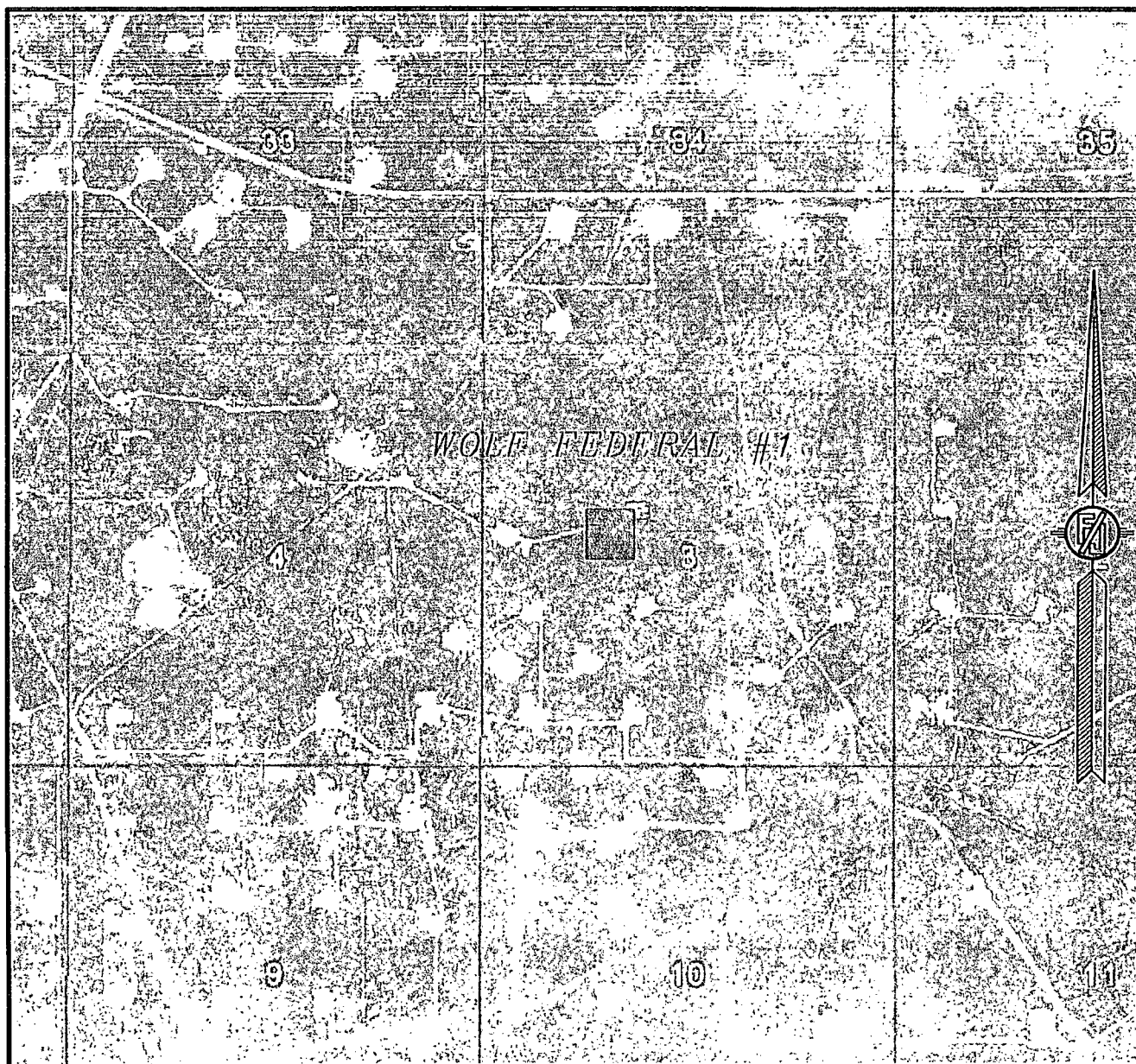
MARCH 12, 2014

SURVEY NO. 2655

MADRON SURVEYING, INC. 301 SOUTH CANAL  
(575) 234-3341

CARLSBAD, NEW MEXICO

SECTION 3, TOWNSHIP 18 SOUTH, RANGE 32 EAST, N.M.P.M.  
LEA COUNTY, STATE OF NEW MEXICO  
AERIAL PHOTO



NOT TO SCALE  
AERIAL PHOTO:  
GOOGLE EARTH  
MARCH 2012

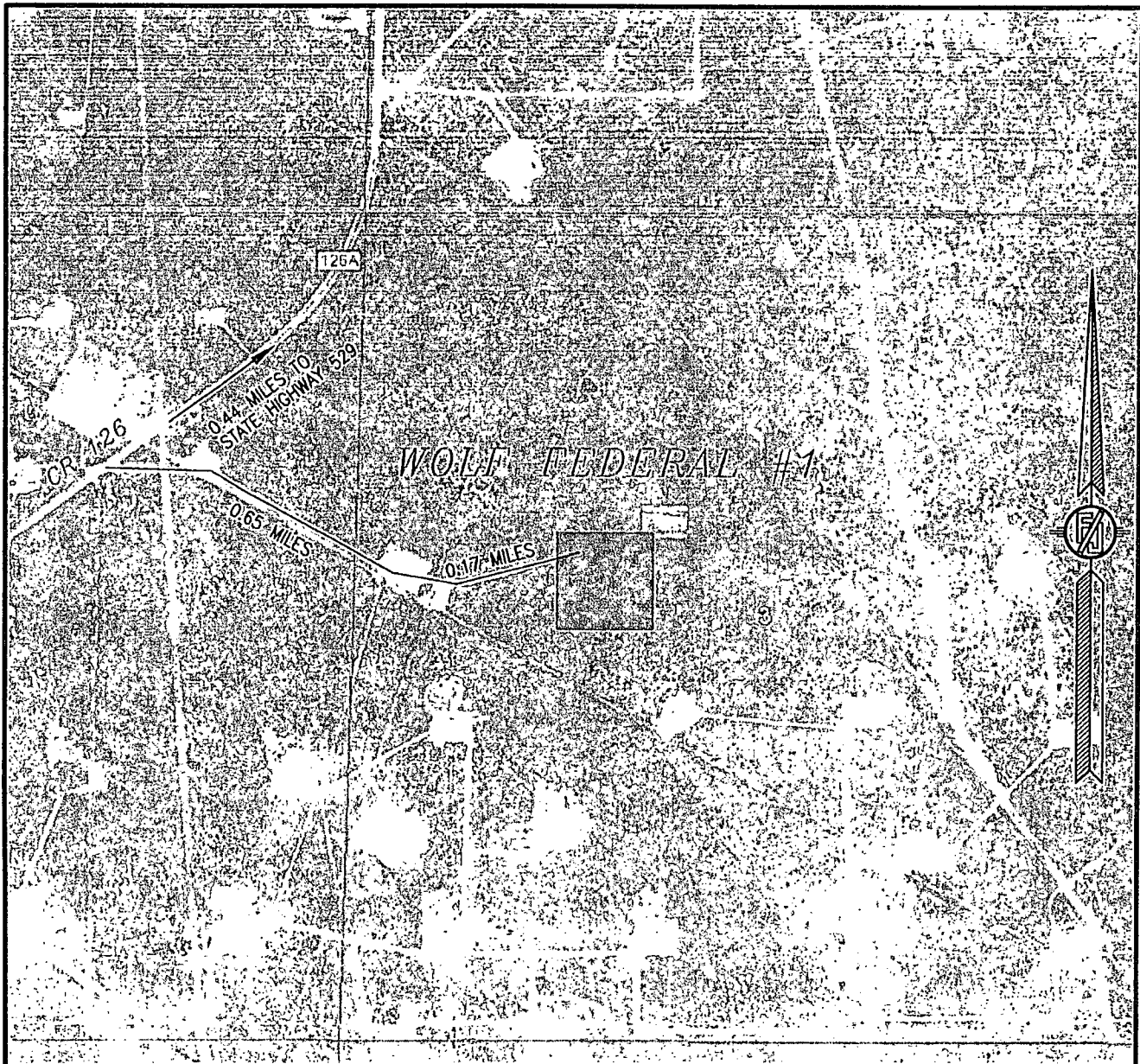
MACK ENERGY CORPORATION  
**WOLF FEDERAL #1**  
LOCATED 2310 FT. FROM THE NORTH LINE  
AND 1650 FT. FROM THE WEST LINE OF  
SECTION 3, TOWNSHIP 18 SOUTH,  
RANGE 32 EAST, N.M.P.M.  
LEA COUNTY, STATE OF NEW MEXICO

MARCH 12, 2014

SURVEY NO. 2655

MADRON SURVEYING, INC. 301 SOUTH CANAL, CARLSBAD, NEW MEXICO  
(575) 234-3341

SECTION 3, TOWNSHIP 18 SOUTH, RANGE 32 EAST, N.M.P.M.  
LEA COUNTY, STATE OF NEW MEXICO  
ACCESS AERIAL ROUTE MAP



NOT TO SCALE  
AERIAL PHOTO:  
GOOGLE EARTH  
MARCH 2012

MACK ENERGY CORPORATION  
**WOLF FEDERAL #1**  
LOCATED 2310 FT. FROM THE NORTH LINE  
AND 1650 FT. FROM THE WEST LINE OF  
SECTION 3, TOWNSHIP 18 SOUTH,  
RANGE 32 EAST, N.M.P.M.  
LEA COUNTY, STATE OF NEW MEXICO

MARCH 12, 2014

SURVEY NO. 2655

MADRON SURVEYING, INC. 301 SOUTH CANAL (575) 234-3341 CARLSBAD, NEW MEXICO