

HOBBS

AUG 25 2014

District I  
1625 N. French Dr., Hobbs, NM 88240  
District II  
1301 W. Grand Avenue, Artesia, NM 88210  
District III  
1000 Rio Brazos Rd., Aztec, NM 87410  
District IV  
1220 S. St. Francis Dr., Santa Fe, NM 87505

State of New Mexico  
Energy, Minerals & Natural Resources Department  
OIL CONSERVATION DIVISION  
1220 South St. Francis Dr.  
Santa Fe, NM 87505

Form C-102  
Revised July 16, 2010  
Submit one copy to appropriate  
District Office  
☐ AMENDED REPORT

WELL LOCATION AND ACREAGE DEDICATION PLAT

|  |   |   |
|--|---|---|
| <sup>1</sup> API Number<br><b>3004120809</b> | <sup>2</sup> Pool Code<br><b>8644286443</b>               | <sup>3</sup> Pool Name<br><b>Tule Montoya (Gas)</b> |
| <sup>4</sup> Property Code<br><b>306460</b>  | <sup>5</sup> Property Name<br><b>Stoltenberg</b>          | <sup>6</sup> Well Number<br><b>1</b>                |
| <sup>7</sup> OGRID No.<br><b>263940</b>      | <sup>8</sup> Operator Name<br><b>Sovereign Eagle, LLC</b> | <sup>9</sup> Elevation<br><b>3307</b>               |

<sup>10</sup> Surface Location

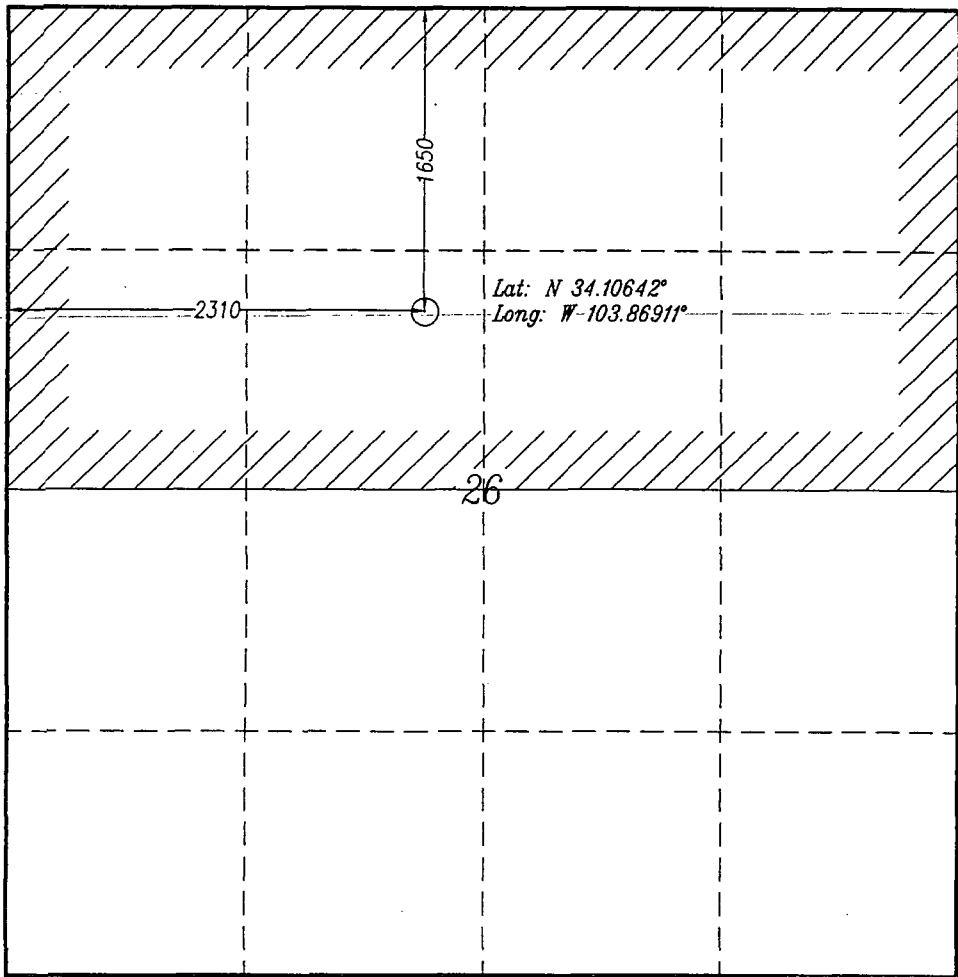
|                           |                      |                        |                      |         |                              |                                  |                              |                               |                            |
|---------------------------|----------------------|------------------------|----------------------|---------|------------------------------|----------------------------------|------------------------------|-------------------------------|----------------------------|
| UL or lot no.<br><b>F</b> | Section<br><b>26</b> | Township<br><b>2 S</b> | Range<br><b>29 E</b> | Lot Idn | Feet from the<br><b>1650</b> | North/South line<br><b>North</b> | Feet from the<br><b>2310</b> | East/West line<br><b>West</b> | County<br><b>Roosevelt</b> |
|---------------------------|----------------------|------------------------|----------------------|---------|------------------------------|----------------------------------|------------------------------|-------------------------------|----------------------------|

<sup>11</sup> Bottom Hole Location If Different From Surface

|               |         |          |       |         |               |                  |               |                |        |
|---------------|---------|----------|-------|---------|---------------|------------------|---------------|----------------|--------|
| UL or lot no. | Section | Township | Range | Lot Idn | Feet from the | North/South line | Feet from the | East/West line | County |
|---------------|---------|----------|-------|---------|---------------|------------------|---------------|----------------|--------|

|   |                               |                                  |                         |
|---|-------------------------------|----------------------------------|-------------------------|
| <sup>12</sup> Dedicated Acres<br><b>320</b> | <sup>13</sup> Joint or Infill | <sup>14</sup> Consolidation Code | <sup>15</sup> Order No. |
|---|-------------------------------|----------------------------------|-------------------------|

No allowable will be assigned to this completion until all interests have been consolidated or a non-standard unit has been approved by the division.



<sup>17</sup> OPERATOR CERTIFICATION  
I hereby certify that the information contained herein is true and complete to the best of my knowledge and belief, and that this organization either owns a working interest or unleased mineral interest in the land including the proposed bottom hole location or has a right to drill this well at this location pursuant to a contract with an owner of such a mineral or working interest, or to a voluntary pooling agreement or a compulsory pooling order heretofore entered by the division.

Signature: *Paul Ragsdale* Date: *08/20/14*  
Printed Name: **PAUL RAGSDALE**  
Email Address: *pragsdale@stratam.com*

<sup>18</sup> SURVEYOR CERTIFICATION  
I hereby certify that the well location shown on this plat was plotted from field notes of actual surveys made by me or under my supervision, and that the same is true and correct to the best of my belief.

Date of Survey: *August 13, 2014*  
Signature and Seal of Professional Surveyor: *[Signature]*  
Certificate Number **8112**

AUG 27 2014

District I  
1625 N. French Dr., Hobbs, NM 88240  
District II  
1301 W. Grand Avenue, Artesia, NM 88210  
District III  
1000 Rio Brazos Rd., Aztec, NM 87410  
District IV  
1220 S. St. Francis Dr., Santa Fe, NM 87505

State of New Mexico  
Energy, Minerals & Natural Resources Department  
OIL CONSERVATION DIVISION  
1220 South St. Francis Dr.  
Santa Fe, NM 87505

Form C-102  
Revised July 16, 2010  
Submit one copy to appropriate  
District Office  
☐ AMENDED REPORT

WELL LOCATION AND ACREAGE DEDICATION PLAT

|   |   |   |
|---|---|---|
| <sup>1</sup> API -Number<br><b>3004120809</b> | <sup>2</sup> Pool Code<br><b>86442</b>                    | <sup>3</sup> Pool Name<br><b>Tule - Montoya (Gas)</b> |
| <sup>4</sup> Property Code<br><b>306460</b>   | <sup>5</sup> Property Name<br><b>Stoltenberg</b>          | <sup>6</sup> Well Number<br><b>1</b>                  |
| <sup>7</sup> OGRID No.<br><b>263940</b>       | <sup>8</sup> Operator Name<br><b>Sovereign Eagle, LLC</b> | <sup>9</sup> Elevation<br><b>3307</b>                 |

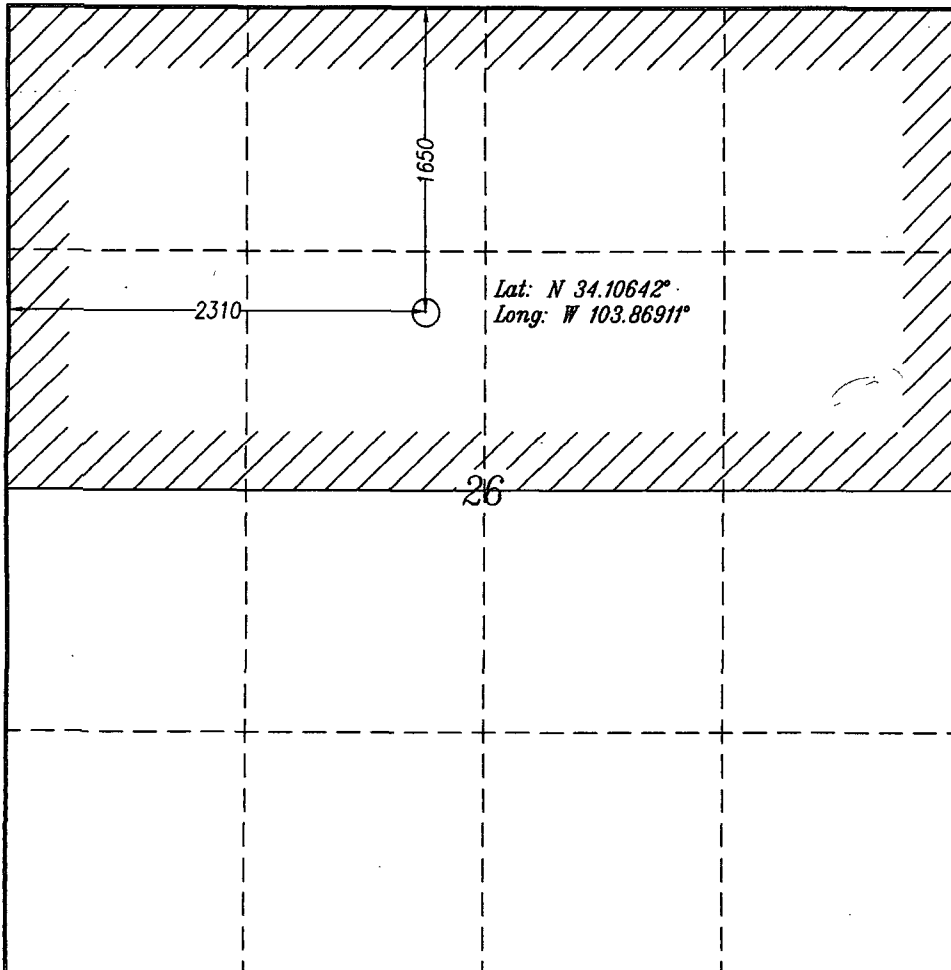
<sup>10</sup> Surface Location

|                           |                      |                        |                      |         |                              |                                  |                              |                               |                            |
|---------------------------|----------------------|------------------------|----------------------|---------|------------------------------|----------------------------------|------------------------------|-------------------------------|----------------------------|
| UL or lot no.<br><b>F</b> | Section<br><b>26</b> | Township<br><b>2 S</b> | Range<br><b>29 E</b> | Lot Idn | Feet from the<br><b>1650</b> | North/South line<br><b>North</b> | Feet from the<br><b>2310</b> | East/West line<br><b>West</b> | County<br><b>Roosevelt</b> |
|---------------------------|----------------------|------------------------|----------------------|---------|------------------------------|----------------------------------|------------------------------|-------------------------------|----------------------------|

<sup>11</sup> Bottom Hole Location If Different From Surface

|   |                               |                                  |                         |         |               |                  |               |                |        |
|---|-------------------------------|----------------------------------|-------------------------|---------|---------------|------------------|---------------|----------------|--------|
| UL or lot no.                               | Section                       | Township                         | Range                   | Lot Idn | Feet from the | North/South line | Feet from the | East/West line | County |
|   |                               |                                  |                         |         |               |                  |               |                |        |
| <sup>12</sup> Dedicated Acres<br><b>320</b> | <sup>13</sup> Joint or Infill | <sup>14</sup> Consolidation Code | <sup>15</sup> Order No. |         |               |                  |               |                |        |

No allowable will be assigned to this completion until all interests have been consolidated or a non-standard unit has been approved by the division.



<sup>17</sup> OPERATOR CERTIFICATION

I hereby certify that the information contained herein is true and complete to the best of my knowledge and belief, and that this organization either owns a working interest or unleased mineral interest in the land including the proposed bottom hole location or has a right to drill this well at this location pursuant to a contract with an owner of such a mineral or working interest, or to a voluntary pooling agreement or a compulsory pooling order heretofore entered by the Division.

Signature: Paul Ragsdale Date: 08/20/14

Printed Name: PAUL RAGSDALE

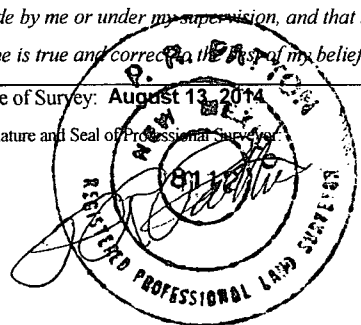
Email Address: pragsdale@strata-nm.com

<sup>18</sup> SURVEYOR CERTIFICATION

I hereby certify that the well location shown on this plat was plotted from field notes of actual surveys made by me or under my supervision, and that the same is true and correct to the best of my belief.

Date of Survey: August 13, 2014

Signature and Seal of Professional Surveyor



Certificate Number **8112**