

District I
1625 N. French Dr., Hobbs, NM 88240
Phone: (575) 393-6161 Fax: (575) 393-0720
District II
811 S. First St., Artesia, NM 88210
Phone: (575) 748-1283 Fax: (575) 748-9720
District III
1000 Rio Brazos Road, Aztec, NM 87410
Phone: (505) 334-6178 Fax: (505) 334-6170
District IV
1220 S. St. Francis Dr., Santa Fe, NM 87505
Phone: (505) 476-3460 Fax: (505) 476-3462

State of New Mexico

Form C-101
Revised July 18, 2013

Energy Minerals and Natural Resources

Oil Conservation Division

1220 South St. Francis Dr.

Santa Fe, NM 87505

☐ AMENDED REPORT

HOBBS OCD

OCT 08 2014

RECEIVED

APPLICATION FOR PERMIT TO DRILL, RE-ENTER, DEEPEN, PLUGBACK, OR ADD A ZONE

Operator Name and Address Judah Oil, LLC P. O. Box 568 Artesia NM 88211		OGRID Number 245872
		API Number 30-025-37521
County Code 313785	Property Name Cotton Draw State SWD	Well No. 1

7. Surface Location

UL - Lot	Section	Township	Range	Lot Idn	Feet from	N/S Line	Feet From	E/W Line	County
A	16	25 S	32 E		100	N	700	E	Lea

8. Proposed Bottom Hole Location

UL - Lot	Section	Township	Range	Lot Idn	Feet from	N/S Line	Feet From	E/W Line	County
A	16	25 S	32 E		100	N	700	E	Lea

9. Pool Information

Pool Name SWD; Bell Canyon - Cherry Canyon (will file C-108 too)	Pool Code 96802
--	---------------------------

Additional Well Information

11. Well Type E & D	12. Well Type S	13. Cable/Rotary R	14. Lease Type S	15. Ground Level Elevation 3450
16. Multiple N	17. Proposed Depth 7000	18. Formation Cherry Canyon	19. Contractor	20. Spud Date Upon C-108 Approval
Depth to Ground water 290'		Distance from nearest fresh water well 20,401' (well C 02245)		Distance to nearest surface water > 1 mile northwest

☒ We will be using a closed-loop system in lieu of lined pits

21. Proposed Casing and Cement Program

Type	Hole Size	Casing Size	Casing Weight/ft	Setting Depth	Sacks of Cement	Estimated TOC
Surface	12-1/4"	8-5/8"	48 (existing)	703'	450	GL
Intermed.	7-7/8"	5-1/2"	17 (new)	4940'	2500	GL
Product'n	6-1/8"	open hole		7000'		

Casing/Cement Program: Additional Comments

Will set packer at @ 4850', run 3-1/2" tubing, and dispose from 4940' to 7000'.
--

22. Proposed Blowout Prevention Program

Type	Working Pressure	Test Pressure	Manufacturer
	3000		

23. I hereby certify that the information given above is true and complete to the best of my knowledge and belief. I further certify that I have complied with 19.15.14.9 (A) NMAC <input type="checkbox"/> and/or 19.15.14.9 (B) NMAC <input type="checkbox"/> if applicable. Signature: <i>Brian Wood</i>		OIL CONSERVATION DIVISION	
Printed name: Brian Wood		Approved By: <i>[Signature]</i>	
Title: Consultant		Title: Petroleum Engineer	
E-mail Address: brian@permitswest.com		Approved Date: _____ Expiration Date: _____	
Date: 10-4-14	Phone: (505) 466-8120	OIL CONSERVATION DIVISION CONDITION OF APPROVAL - Approval for drilling / workover ONLY - CANNOT INJECT OR DISPOSAL until the injection/disposal order has been approved by the OCD Santa Fe office.	

OCT 15 2014

CURRENT WELLBORE STATUS

JUDAH OIL, LLC

Cotton Draw State SWD No 1

API # 30-025-37521

100' FNL 700 FEL NENE (A) SEC 16 T25S - R32E

ALL DEPTHS KB

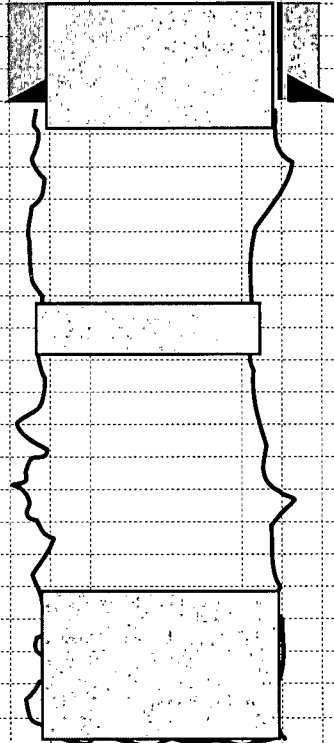
KB 3461'

GL 3450'

215 sx Cmt Plug @Surface - 703'

45 sx Plug @1658-1823' Tagged

300 sx Plug @4272'-4940' Tagged



12 1/4" hole

8-5/8", 48# csg @ 635'
w/450 sx to Surf Circ

7*7/8" Open Hole

TD 4940

PROPOSED WELLBORE STATUS

JUDAH OIL, LLC

Cotton Draw State SWD No 1

API # 30-025-37521

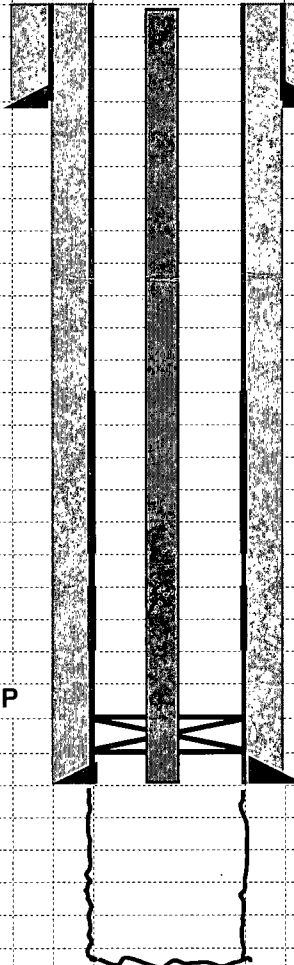
100' FNL 700 FEL NENE (A) SEC 16 T25S - R32E

ALL DEPTHS KB

KB 3461'

GL 3450'

5-1/2" X 3-1/2" ASI-X NP
PKR @ 4850'



12 1/4" hole

8-5/8", 48# csg @ 635'
w/450 sx to Surf Circ

Top Rustler 788'

Top Salt 1170'

7 7/8" Open Hole

Base Salt 4410

Top/Delaware Section 4632'

Top/Lamar 4632'

Top Bell Canyon 4662'

5-1/2" N-80 17# csg @ 4940'
w/2500 sx to Surf Circ

Est. Top Cherry Canyon 5570'

Open Hole Completion 6-1/8"

Est. Top Brushy Canyon 7100'

TD 7000'