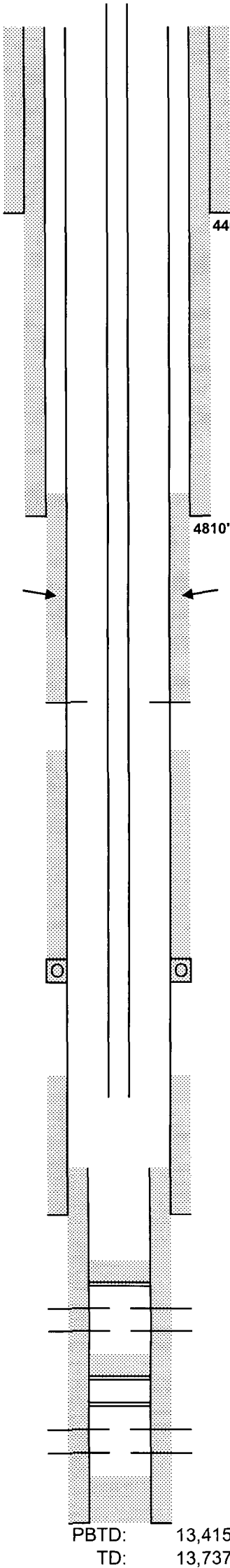


CML EXPLORATION, LLC



RKB 4106'  
GL 4088'

Lease & Well No.: Gen. Montcalm 25 # 1  
Well Category:  
Area: New Mexico  
Subarea: Buckeye  
Legal Description: API #30-025-37823  
H, 1980' FNL, 1260' FEL, Sec 25, T-17-S, R-33-E  
Lea County, NM

HOBBS OCD

OCT 24 2014

RECEIVED

Spudded: 06/14/2006  
TD: 09/11/2006  
Completed: 11/01/2006

Stimulation: 10/30/06 Lower Morrow - Perf TCP - natural

7/16/08 Upper Morrow - 1000 gals of 15%  
HCL Mod 101 acid & 66 ball sealers

12 1/4" hole  
9 5/8" 40# J-55 & N80  
set @ 4810'  
1850 sx cement.  
TOC = surface

PRESSURE DATA  
11/08/06 120 hr BHP = 1635 psi

OCT 27 2014