

Submit 1 Copy To Appropriate District
Office
District I - (575) 393-6161
1625 N. French Dr., Hobbs, NM 88240
District II - (575) 748-1283
811 S. First St., Artesia, NM 88210
District III - (505) 334-6178
1000 Rio Brazos Rd., Aztec, NM 87410
District IV - (505) 476-3460
1220 S. St. Francis Dr., Santa Fe, NM
87505

State of New Mexico
Energy, Minerals and Natural Resources

Form C-103
Revised August 1, 2011

OIL CONSERVATION DIVISION
1220 South St. Francis Dr.
Santa Fe, NM 87505

WELL API NO. 30-025-31121
5. Indicate Type of Lease STATE XX FEE
6. State Oil & Gas Lease No.
7. Lease Name or Unit Agreement Name East Pearl Queen Unit
8. Well Number 82
9. OGRID Number 25482
10. Pool name or Wildcat Pearl Queen

SUNDRY NOTICES AND REPORTS ON WELLS
(DO NOT USE THIS FORM FOR PROPOSALS TO DRILL OR TO DEEPEN OR PLUG BACK TO A
DIFFERENT RESERVOIR. USE "APPLICATION FOR PERMIT" (FORM C-104) FOR SUCH
PROPOSALS.)

1. Type of Well: Oil Well XX Gas Well Other

2. Name of Operator
State of New Mexico formerly Xeric Oil & Gas Corp.

3. Address of Operator
1625 N. French Drive Hobbs, New Mexico 88240

4. Well Location
Unit Letter K: 1500 feet from the S line and 1410 feet from the W line
Section 27 Township 19S Range 35E NMPM County Lea

11. Elevation (Show whether DR, RKB, RT, GR, etc.)

12. Check Appropriate Box to Indicate Nature of Notice, Report or Other Data

NOTICE OF INTENTION TO:		SUBSEQUENT REPORT OF:	
PERFORM REMEDIAL WORK <input type="checkbox"/>	PLUG AND ABANDON XX	REMEDIAL WORK <input type="checkbox"/>	ALTERING CASING <input type="checkbox"/>
TEMPORARILY ABANDON <input type="checkbox"/>	CHANGE PLANS <input type="checkbox"/>	COMMENCE DRILLING OPNS. <input type="checkbox"/>	P AND A <input type="checkbox"/>
PULL OR ALTER CASING <input type="checkbox"/>	MULTIPLE COMPL <input type="checkbox"/>	CASING/CEMENT JOB <input type="checkbox"/>	
DOWNHOLE COMMINGLE <input type="checkbox"/>			
OTHER: <input type="checkbox"/>		OTHER: <input type="checkbox"/>	

13. Describe proposed or completed operations. (Clearly state all pertinent details, and give pertinent dates, including estimated date of starting any proposed work). SEE RULE 19.15.7.14 NMAC. For Multiple Completions: Attach wellbore diagram of proposed completion or recompletion.

SEE ATTACHMENTS: PROCEDURE & SCHEMATIC

Spud Date:

Rig Release Date:

I hereby certify that the information above is true and complete to the best of my knowledge and belief.

SIGNATURE Mary G. Brown TITLE Compliance Officer DATE 7/5/2013

Type or print name _____ E-mail address: _____ PHONE: 575-393-6161

For State Use Only

APPROVED BY: Mark Whitaker TITLE Compliance Officer DATE 7/11/2013

Conditions of Approval (if any):

NOV 04 2014

State of New Mexico formerly ___XERIC OIL & GAS_____

LEASE NAME_ EAST_PEARL QUEEN UNIT #82 API 30-0 25 - 31121

U.L. K Section 27 -T 19 S-R 35 E FROM 1500 ~~W~~ / S L, 1410 ~~E~~ / W L.

SPECIAL NOTE—Mud Laden Fluid will consist of 9.5# brine with 12.5# Salt Gel per BBL (25 sacks of gel/ per 100 BBLS Brine). All cement plugs will be 25 sacks of cement or 100', whichever is greater. **Unless otherwise specified in the approved procedure**, cement plugs shall consist of class "C" for depths to 7500'. Class "H" will be used for plugs deeper than 7500'.

1. MIRU plugging unit. Lay down production equipment.
2. Set CIBP @ 4750 '. Circulate MLF. Spot 25 sxs cmt on CIBP. **PRESSURE TEST CSG.**
3. ~~Perf/Sqz~~ or Spot 25 sxs cmt @ 3400 '. If perf, WOC & TAG.
4. ~~Perf/Sqz~~ or Spot 25 sxs cmt @ 1800 '. If perf, WOC and TAG.
5. ~~Perf/Sqz~~ or Spot @ 470 ', w/ sufficient volume to circ cmt to surface inside/~~outside~~ of csg strings.
6. Cutoff wellhead and anchors, install marker.

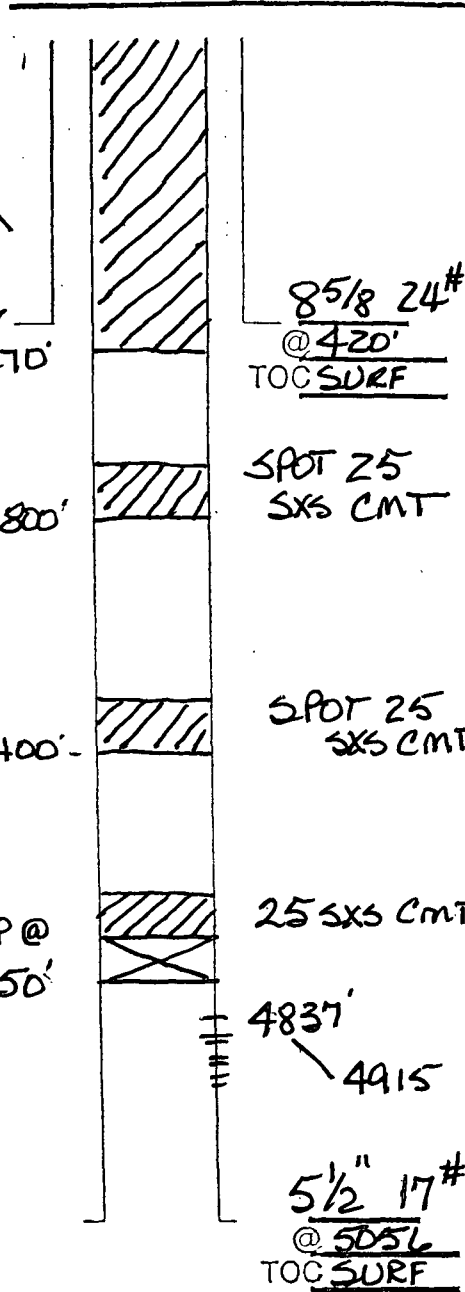
-----SPECIAL NOTES-----

PLUGGING & ABANDONMENT WORKSHEET

OPERATOR STATE OF NM formerly XERIC OIL & GAS
 LEASE NAME EAST PEARL QUEEN UNIT

WELL # 82
 SECT 27 TWN 19S RNG 35E
 FROM 1500 W/S L 1410 B/W L
 TD: _____ FORMATION @ TD _____
 PBTD: _____ FORMATION @ PBTD _____

CMT
 TO
 SURF
 ↑
 470'



	SIZE	SET @	TOC	TOC DETERMINED BY	
SURFACE	8 5/8	420	SURF	CIRC	
INTMED 1					
INTMED 2					
PROD	5 1/2	5056	SURF	CIRC	
	SIZE	TOP	BOT	TOC	DETERMINED BY
LINER 1					
LINER 2					
	CUT & PULL @			TOP - BOTTOM	
INTMED 1			PERFS	-	
INTMED 2			OPENHOLE	-	
PROD					

* REQUIRED PLUGS DISTRICT I

PLUG	TYPE	SACKS	DEPTH
EXAMPLES			
PLUG #1	OH	25 SXS	9850'
PLUG #2	SHOE	50 SXS	8700'-8800'
PLUG #3	CIBP/35'		5300'
PLUG #4	CIBP	25 SXS	5300'
PLUG #5	STUB	50 SXS	4600'-4700'
PLUG #6	REINR SQZ	200 SXS	400'
PLUG #7	SURF	10 SXS	0-10'
PLUG #8			
PLUG #9			
PLUG #10			
PLUG #11			
PLUG #12			
PLUG #13			
PLUG #14			
PLUG #15			
PLUG #16			
PLUG #17			
PLUG #18			
PLUG #19			
PLUG #20			
PLUG #21			
PLUG #22			
PLUG #23			
PLUG #24			
PLUG #25			
PLUG #26			
PLUG #27			
PLUG #28			
PLUG #29			
PLUG #30			
PLUG #31			
PLUG #32			
PLUG #33			
PLUG #34			
PLUG #35			
PLUG #36			
PLUG #37			
PLUG #38			
PLUG #39			
PLUG #40			
PLUG #41			
PLUG #42			
PLUG #43			
PLUG #44			
PLUG #45			
PLUG #46			
PLUG #47			
PLUG #48			
PLUG #49			
PLUG #50			
PLUG #51			
PLUG #52			
PLUG #53			
PLUG #54			
PLUG #55			
PLUG #56			
PLUG #57			
PLUG #58			
PLUG #59			
PLUG #60			
PLUG #61			
PLUG #62			
PLUG #63			
PLUG #64			
PLUG #65			
PLUG #66			
PLUG #67			
PLUG #68			
PLUG #69			
PLUG #70			
PLUG #71			
PLUG #72			
PLUG #73			
PLUG #74			
PLUG #75			
PLUG #76			
PLUG #77			
PLUG #78			
PLUG #79			
PLUG #80			
PLUG #81			
PLUG #82			
PLUG #83			
PLUG #84			
PLUG #85			
PLUG #86			
PLUG #87			
PLUG #88			
PLUG #89			
PLUG #90			
PLUG #91			
PLUG #92			
PLUG #93			
PLUG #94			
PLUG #95			
PLUG #96			
PLUG #97			
PLUG #98			
PLUG #99			
PLUG #100			

PLUG	TYPE	SACKS	DEPTH
EXAMPLES			
PLUG #1	OH	25 SXS	9850'
PLUG #2	SHOE	50 SXS	8700'-8800'
PLUG #3	CIBP/35'		5300'
PLUG #4	CIBP	25 SXS	5300'
PLUG #5	STUB	50 SXS	4600'-4700'
PLUG #6	REINR SQZ	200 SXS	400'
PLUG #7	SURF	10 SXS	0-10'
PLUG #8			
PLUG #9			
PLUG #10			
PLUG #11			
PLUG #12			
PLUG #13			
PLUG #14			
PLUG #15			
PLUG #16			
PLUG #17			
PLUG #18			
PLUG #19			
PLUG #20			
PLUG #21			
PLUG #22			
PLUG #23			
PLUG #24			
PLUG #25			
PLUG #26			
PLUG #27			
PLUG #28			
PLUG #29			
PLUG #30			
PLUG #31			
PLUG #32			
PLUG #33			
PLUG #34			
PLUG #35			
PLUG #36			
PLUG #37			
PLUG #38			
PLUG #39			
PLUG #40			
PLUG #41			
PLUG #42			
PLUG #43			
PLUG #44			
PLUG #45			
PLUG #46			
PLUG #47			
PLUG #48			
PLUG #49			
PLUG #50			
PLUG #51			
PLUG #52			
PLUG #53			
PLUG #54			
PLUG #55			
PLUG #56			
PLUG #57			
PLUG #58			
PLUG #59			
PLUG #60			
PLUG #61			
PLUG #62			
PLUG #63			
PLUG #64			
PLUG #65			
PLUG #66			
PLUG #67			
PLUG #68			
PLUG #69			
PLUG #70			
PLUG #71			
PLUG #72			
PLUG #73			
PLUG #74			
PLUG #75			
PLUG #76			
PLUG #77			
PLUG #78			
PLUG #79			
PLUG #80			
PLUG #81			
PLUG #82			
PLUG #83			
PLUG #84			
PLUG #85			
PLUG #86			
PLUG #87			
PLUG #88			
PLUG #89			
PLUG #90			
PLUG #91			
PLUG #92			
PLUG #93			
PLUG #94			
PLUG #95			
PLUG #96			
PLUG #97			
PLUG #98			
PLUG #99			
PLUG #100			