

Submit 1 Copy To Appropriate District Office  
District I - (575) 393-6161  
1625 N. French Dr., Hobbs, NM 88240  
District II - (575) 748-1283  
811 S. First St., Artesia, NM 88210  
District III - (505) 334-6178  
1000 Rio Brazos Rd., Aztec, NM 87410  
District IV - (505) 476-3460  
1220 S. St. Francis Dr., Santa Fe, NM 87505

State of New Mexico  
Energy, Minerals and Natural Resources

Form C-103  
Revised August 1, 2011

OIL CONSERVATION DIVISION  
1220 South St. Francis Dr.  
Santa Fe, NM 87505

WELL API NO. 30-025-03185
5. Indicate Type of Lease STATE FEE XX
6. State Oil & Gas Lease No.
7. Lease Name or Unit Agreement Name East Pearl Queen Unit
8. Well Number 9
9. OGRID Number 25482
10. Pool name or Wildcat Pearl Queen

NOV 04 2014

RECEIVED

SUNDRY NOTICES AND REPORTS ON WELLS  
(DO NOT USE THIS FORM FOR PROPOSALS TO DRILL OR TO DEEPEN OR PLUG BACK TO A DIFFERENT RESERVOIR. USE "APPLICATION FOR PERMIT" (FORM C-101) FOR SUCH PROPOSALS.)

1. Type of Well: Oil Well Gas Well Other INJECTION WELL

2. Name of Operator  
State of New Mexico formerly Xeric Oil & Gas Corp.

3. Address of Operator  
1625 N. French Drive Hobbs, New Mexico 88240

4. Well Location  
Unit Letter L: 1980 feet from the S line and 660 feet from the W line  
Section 22 Township 19S Range 35E NMPM County Lea

11. Elevation (Show whether DR, RKB, RT, GR, etc.)

12. Check Appropriate Box to Indicate Nature of Notice, Report or Other Data

NOTICE OF INTENTION TO:		SUBSEQUENT REPORT OF:	
PERFORM REMEDIAL WORK <input type="checkbox"/>	PLUG AND ABANDON XX	REMEDIAL WORK <input type="checkbox"/>	ALTERING CASING <input type="checkbox"/>
TEMPORARILY ABANDON <input type="checkbox"/>	CHANGE PLANS <input type="checkbox"/>	COMMENCE DRILLING OPNS. <input type="checkbox"/>	P AND A <input type="checkbox"/>
PULL OR ALTER CASING <input type="checkbox"/>	MULTIPLE COMPL <input type="checkbox"/>	CASING/CEMENT JOB <input type="checkbox"/>	
DOWNHOLE COMMINGLE <input type="checkbox"/>			
OTHER: <input type="checkbox"/>		OTHER: <input type="checkbox"/>	

13. Describe proposed or completed operations. (Clearly state all pertinent details, and give pertinent dates, including estimated date of starting any proposed work). SEE RULE 19.15.7.14 NMAC. For Multiple Completions: Attach wellbore diagram of proposed completion or recompletion.

BASIC

SEE ATTACHMENTS: PROCEDURE & SCHEMATIC

Spud Date:

Rig Release Date:

I hereby certify that the information above is true and complete to the best of my knowledge and belief.

SIGNATURE Mary S Brown TITLE Compliance Officer DATE 7/5/2013

Type or print name \_\_\_\_\_ E-mail address: \_\_\_\_\_ PHONE: 575-393-6161

For State Use Only

APPROVED BY: Mark White TITLE Compliance Officer DATE 7/11/2013

Conditions of Approval (if any):

NOV 04 2014

State of New Mexico formerly \_\_\_XERIC OIL & GAS\_\_\_

LEASE NAME \_\_\_EAST\_PEARL QUEEN UNIT\_\_\_ #9 API 30-0 25 - 03185

U.L. L Section 22 -T 19 S-R 35E FROM 1980 ~~N~~ / S L, 660 ~~E~~ / W L.

**SPECIAL NOTE**—Mud Laden Fluid will consist of 9.5# brine with 12.5# Salt Gel per BBL (25 sacks of gel/ per 100 BBLS Brine). All cement plugs will be 25 sacks of cement or 100', whichever is greater. **Unless otherwise specified in the approved procedure**, cement plugs shall consist of class "C" for depths to 7500'. Class "H" will be used for plugs deeper than 7500'.

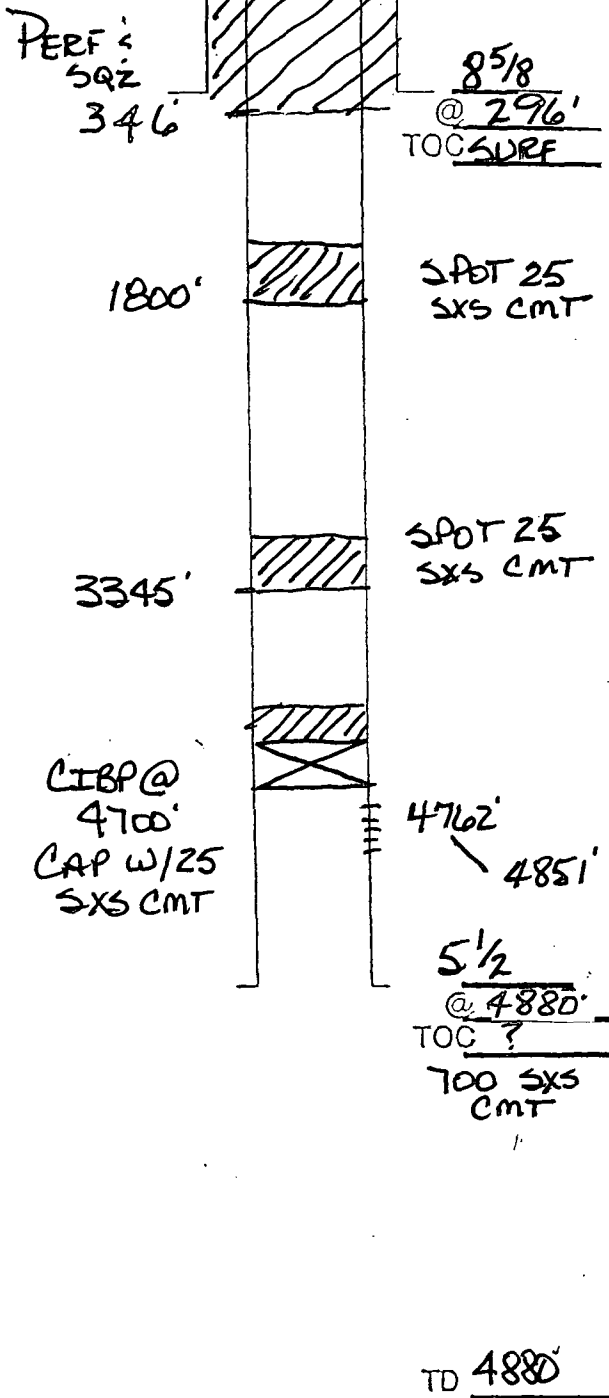
1. MIRU plugging unit. Lay down production equipment.
2. Set CIBP @ 4700 '. Circulate MLF. Spot 25 sxs cmt on CIBP. **PRESSURE TEST CSG.**
3. ~~Perf/Sqz or~~ Spot 25 sxs cmt @ 3345 '. If perf, WOC & TAG.
4. ~~Perf/Sqz or~~ Spot 25 sxs cmt @ 1800 '. If perf, WOC and TAG.
5. ~~Perf/Sqz or Spot~~ @ 346 ', w/ sufficient volume to circ cmt to surface inside/outside of csg strings.
6. Cutoff wellhead and anchors, install marker.

-----SPECIAL NOTES-----

# PLUGGING & ABANDONMENT WORKSHEET

OPERATOR STATE OF NM formerly XERO OIL & GAS  
LEASENAME EAST PEARL QUEEN UNIT

SECT 22 TWN 19S RNG 35E  
FROM 1980 M/S L 660 EWL  
TD: \_\_\_\_\_ FORMATION @ TD \_\_\_\_\_  
PBTD: \_\_\_\_\_ FORMATION @ PBTD \_\_\_\_\_



	SIZE	SET @	TOC	TOC DETERMINED BY	
SURFACE	8 5/8	296	SURF	CIRC	
INTMED 1					
INTMED 2					
PROD	5 1/2	4880	?	700 SXS	
	SIZE	TOP	BOT	TOC	DETERMINED BY
LINER 1					
LINER 2					
CUT & PULL @			TOP - BOTTOM		
INTMED 1			PERFS	-	
INTMED 2			OPENHOLE	-	
PROD					

## \* REQUIRED PLUGS DISTRICT I

PLUG	TYPE	SACKS	DEPTH
PLUG #1	OH	25 SXS	9850'
PLUG #2	SHOE	50 SXS	8700'-8800'
PLUG #3	CIBP/35'		5300'
PLUG #4	CIBP	25 SXS	5300'
PLUG #5	STUB	50 SXS	4600'-4700'
PLUG #6	RETNR SQZ	200 SXS	400'
PLUG #7	SURF	10 SXS	0-10'
PLUG #8			
PLUG #9			
PLUG #10			
PLUG #11			
PLUG #12			
PLUG #13			
PLUG #14			
PLUG #15			
PLUG #16			
PLUG #17			
PLUG #18			
PLUG #19			
PLUG #20			
PLUG #21			
PLUG #22			
PLUG #23			
PLUG #24			
PLUG #25			
PLUG #26			
PLUG #27			
PLUG #28			
PLUG #29			
PLUG #30			
PLUG #31			
PLUG #32			
PLUG #33			
PLUG #34			
PLUG #35			
PLUG #36			
PLUG #37			
PLUG #38			
PLUG #39			
PLUG #40			
PLUG #41			
PLUG #42			
PLUG #43			
PLUG #44			
PLUG #45			
PLUG #46			
PLUG #47			
PLUG #48			
PLUG #49			
PLUG #50			
PLUG #51			
PLUG #52			
PLUG #53			
PLUG #54			
PLUG #55			
PLUG #56			
PLUG #57			
PLUG #58			
PLUG #59			
PLUG #60			
PLUG #61			
PLUG #62			
PLUG #63			
PLUG #64			
PLUG #65			
PLUG #66			
PLUG #67			
PLUG #68			
PLUG #69			
PLUG #70			
PLUG #71			
PLUG #72			
PLUG #73			
PLUG #74			
PLUG #75			
PLUG #76			
PLUG #77			
PLUG #78			
PLUG #79			
PLUG #80			
PLUG #81			
PLUG #82			
PLUG #83			
PLUG #84			
PLUG #85			
PLUG #86			
PLUG #87			
PLUG #88			
PLUG #89			
PLUG #90			
PLUG #91			
PLUG #92			
PLUG #93			
PLUG #94			
PLUG #95			
PLUG #96			
PLUG #97			
PLUG #98			
PLUG #99			
PLUG #100			

PLUG	TYPE	SACKS	DEPTH
PLUG #1	OH	25 SXS	9850'
PLUG #2	SHOE	50 SXS	8700'-8800'
PLUG #3	CIBP/35'		5300'
PLUG #4	CIBP	25 SXS	5300'
PLUG #5	STUB	50 SXS	4600'-4700'
PLUG #6	RETNR SQZ	200 SXS	400'
PLUG #7	SURF	10 SXS	0-10'
PLUG #8			
PLUG #9			
PLUG #10			
PLUG #11			
PLUG #12			
PLUG #13			
PLUG #14			
PLUG #15			
PLUG #16			
PLUG #17			
PLUG #18			
PLUG #19			
PLUG #20			
PLUG #21			
PLUG #22			
PLUG #23			
PLUG #24			
PLUG #25			
PLUG #26			
PLUG #27			
PLUG #28			
PLUG #29			
PLUG #30			
PLUG #31			
PLUG #32			
PLUG #33			
PLUG #34			
PLUG #35			
PLUG #36			
PLUG #37			
PLUG #38			
PLUG #39			
PLUG #40			
PLUG #41			
PLUG #42			
PLUG #43			
PLUG #44			
PLUG #45			
PLUG #46			
PLUG #47			
PLUG #48			
PLUG #49			
PLUG #50			
PLUG #51			
PLUG #52			
PLUG #53			
PLUG #54			
PLUG #55			
PLUG #56			
PLUG #57			
PLUG #58			
PLUG #59			
PLUG #60			
PLUG #61			
PLUG #62			
PLUG #63			
PLUG #64			
PLUG #65			
PLUG #66			
PLUG #67			
PLUG #68			
PLUG #69			
PLUG #70			
PLUG #71			
PLUG #72			
PLUG #73			
PLUG #74			
PLUG #75			
PLUG #76			
PLUG #77			
PLUG #78			
PLUG #79			
PLUG #80			
PLUG #81			
PLUG #82			
PLUG #83			
PLUG #84			
PLUG #85			
PLUG #86			
PLUG #87			
PLUG #88			
PLUG #89			
PLUG #90			
PLUG #91			
PLUG #92			
PLUG #93			
PLUG #94			
PLUG #95			
PLUG #96			
PLUG #97			
PLUG #98			
PLUG #99			
PLUG #100			