

DISTRICT I  
1625 N. French Dr., Hobbs, NM 88240  
Phone (505) 393-6181 Fax: (505) 393-0720

DISTRICT II  
811 S. First St., Artesia, NM 88210  
Phone (505) 746-1283 Fax: (505) 746-9720

DISTRICT III  
1000 Rio Brazos Rd., Aztec, NM 87410  
Phone (505) 884-8170 Fax: (505) 884-0170

DISTRICT IV  
1220 S. St. Francis Dr., Santa Fe, NM 87505  
Phone (505) 476-3400 Fax: (505) 476-3462

State of New Mexico  
Energy, Minerals and Natural Resources Department

Form C-102  
Revised August 1, 2011

OIL CONSERVATION DIVISION  
1220 South St. Francis Dr.  
Santa Fe, New Mexico 87505

HOBBSCOD copy to appropriate  
District Office

DEC 22 2014

WELL LOCATION AND ACREAGE DEDICATION PLAT RECEIVED AMENDED REPORT

API Number 30-025-41451	Pool Code 96715	Pool Name Wildcat Bone Spring
Property Code 39462	Property Name COTTON DRAW 9L FEDERAL	Well Number 3H
OGRID No. 215099	Operator Name CIMAREX ENERGY CO.	Elevation 3429

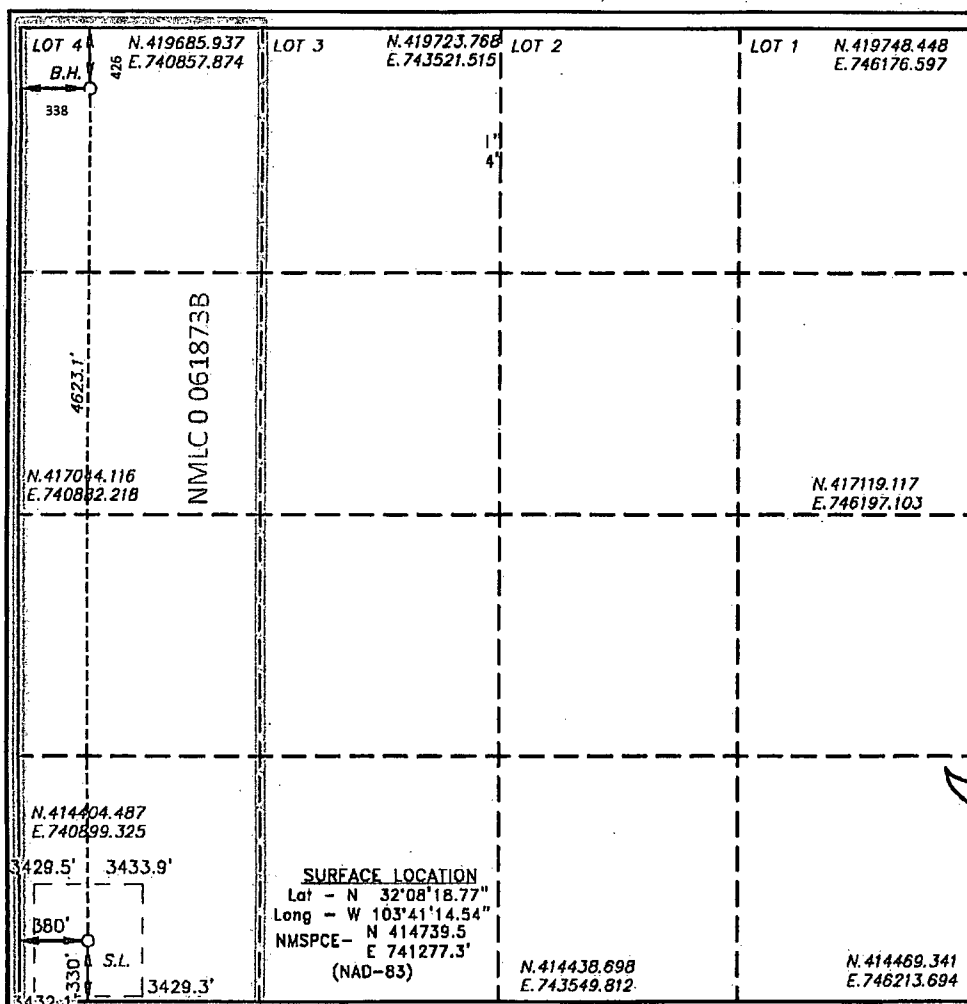
Surface Location

UL or lot No. M	Section 9	Township 25 S	Range 32 E	Lot Idn	Feet from the 330	North/South line SOUTH	Feet from the 380	East/West line WEST	County LEA
--------------------	--------------	------------------	---------------	---------	----------------------	---------------------------	----------------------	------------------------	---------------

Bottom Hole Location If Different From Surface

UL or lot No. LOT 4	Section 9	Township 25 S	Range 32 E	Lot Idn	Feet from the 425	North/South line NORTH	Feet from the 338	East/West line WEST	County LEA
Dedicated Acres 160	Joint or Infill	Consolidation Code	Order No.						

NO ALLOWABLE WILL BE ASSIGNED TO THIS COMPLETION UNTIL ALL INTERESTS HAVE BEEN CONSOLIDATED  
OR A NON-STANDARD UNIT HAS BEEN APPROVED BY THE DIVISION



OPERATOR CERTIFICATION

I hereby certify that the information contained herein is true and complete to the best of my knowledge and belief, and that this organization either owns a working interest or unleased mineral interest in the land including the proposed bottom hole location or has a right to drill this well at this location pursuant to a contract with an owner of such a mineral or working interest, or to a voluntary pooling agreement or a compulsory pooling order heretofore entered by the division.

Gloria Garza 1/10/2014  
Signature Date  
Gloria Garza  
Printed Name  
ggarza@cimarex.com  
Email Address

SURVEYOR CERTIFICATION

I hereby certify that the well location shown on this plat was plotted from field notes of actual surveys made by me or under my supervision, and that the same is true and correct to the best of my belief.

2012  
Date Surveyed  
Signature & Seal of Professional Surveyor  
7460

Certificate No. Gary L. Jones 7977

Basin Surveys

DEC 22 2014