

District I  
1625 N. French Dr., Hobbs, NM 88240  
Phone: (575) 393-6161 Fax: (575) 393-0720  
District II  
811 S. First St., Artesia, NM 88210  
Phone: (575) 748-1283 Fax: (575) 748-9720  
District III  
1000 Rio Brazos Road, Aztec, NM 87410  
Phone: (505) 334-6178 Fax: (505) 334-6170  
District IV  
1220 S. St. Francis Dr., Santa Fe, NM 87505  
Phone: (505) 476-3460 Fax: (505) 476-3462

HOBBSOCD

FEB 02 2015

RECEIVED

State of New Mexico  
Energy, Minerals & Natural Resources  
Department  
OIL CONSERVATION DIVISION  
1220 South St. Francis Dr.  
Santa Fe, NM 87505

FORM C-102

Revised August 1, 2011

Submit one copy to appropriate

District Office

☐ AMENDED REPORT

WELL LOCATION AND ACREAGE DEDICATION PLAT

<sup>1</sup> API Number 30-025- 42412		<sup>2</sup> Pool Code 97900	<sup>3</sup> Pool Name Red Hills; Upper bone Spring Shale
<sup>4</sup> Property Code 314178	<sup>5</sup> Property Name HAWK 35 FED		<sup>6</sup> Well Number #9H
<sup>7</sup> OGRID No. 7377	<sup>8</sup> Operator Name EOG RESOURCES, INC.		<sup>9</sup> Elevation 3526'

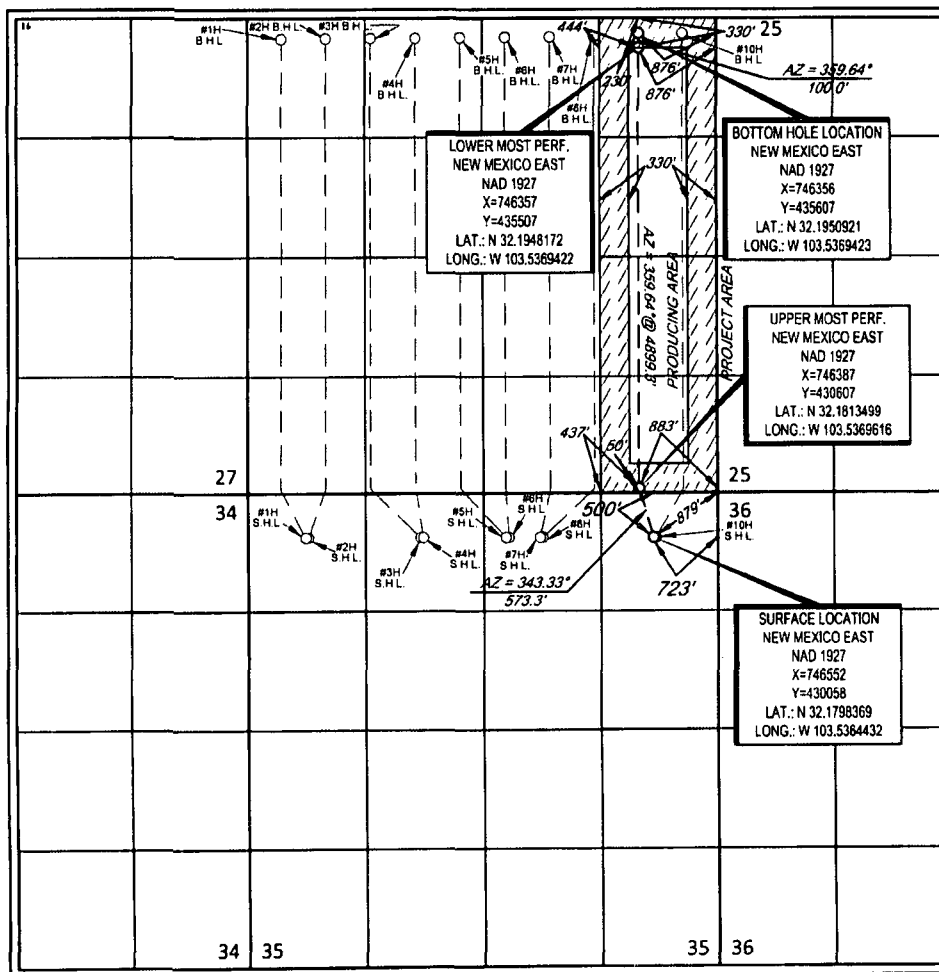
<sup>10</sup>Surface Location

UL or lot no.	Section	Township	Range	Lot Idn	Feet from the	North/South line	Feet from the	East/West line	County
A	35	24-S	33-E	-	500'	NORTH	723'	EAST	LEA

UL or lot no.	Section	Township	Range	Lot Idn	Feet from the	North/South line	Feet from the	East/West line	County
A	26	24-S	33-E	-	230'	NORTH	876'	EAST	LEA

<sup>11</sup> Dedicated Acres 160	<sup>12</sup> Joint or Infill	<sup>13</sup> Consolidation Code	<sup>14</sup> Order No.
--------------------------------------	-------------------------------	----------------------------------	-------------------------

No allowable will be assigned to this completion until all interests have been consolidated or a non-standard unit has been approved by the division.



<sup>17</sup>OPERATOR CERTIFICATION

I hereby certify that the information contained herein is true and complete to the best of my knowledge and belief, and that this organization either owns a working interest or released mineral interest in the land including the proposed bottom hole location or has a right to drill this well at this location pursuant to a contract with an owner of such a mineral or working interest, or to a voluntary pooling agreement or a compulsory pooling order heretofore entered by the division.

*Stan Wagner* 1/28/14  
Signature Date

Stan Wagner  
Printed Name

E-mail Address

<sup>18</sup>SURVEYOR CERTIFICATION

I hereby certify that the well location shown on this plat was plotted from field notes of actual surveys made by me or under my supervision, and that the same is true to the best of my belief.

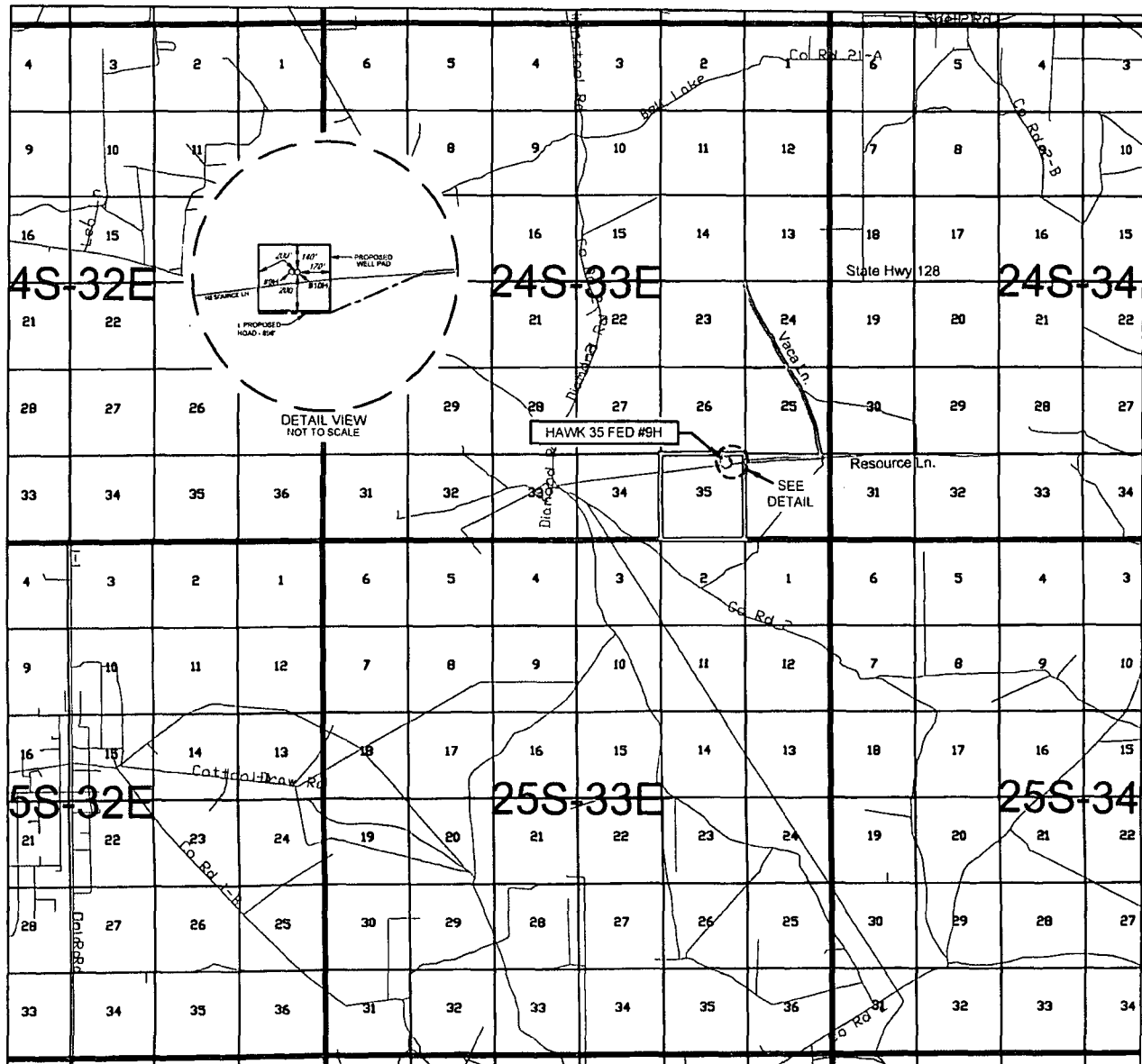
10/29/2013  
Date of Survey  
Signature and Seal of Surveyor

18329  
MICHAEL BROWN  
PROFESSIONAL SURVEYOR

Certificate Number

FEB 03 2015

# EXHIBIT 2 VICINITY MAP



LEASE NAME & WELL NO.: HAWK 35 FED #9H

SECTION 35 TWP 24-S RGE 33-E SURVEY N.M.P.M.

COUNTY LEA STATE NM

DESCRIPTION 500' FNL & 723' FEL

DISTANCE & DIRECTION FROM INT. OF NM-18 N & NM-128,  
GO WEST ON NM-128 W ±22.0 MILES, THENCE SOUTH ON  
VACA LN. ±2.3 MILES, THENCE WEST ON RESOURCE LN. ±0.9  
MILES, TO A POINT ±896 FEET SOUTH OF THE LOCATION.

THIS PROPOSED LOCATION SHOWN HEREON HAS BEEN SURVEYED ON THE GROUND UNDER MY SUPERVISION AND PREPARED ACCORDING TO THE EVIDENCE FOUND AT THE TIME OF SURVEY, AND DATA PROVIDED BY EOG RESOURCES, INC. THIS CERTIFICATION IS MADE AND LIMITED TO THOSE PERSONS OR ENTITIES SHOWN ON THE FACE OF THIS PLAT AND IS NON-TRANSFERABLE. THIS SURVEY IS CERTIFIED FOR THIS TRANSACTION ONLY.

ALL BEARINGS, DISTANCES, AND COORDINATE VALUES CONTAINED HEREON ARE GRID BASED UPON THE NEW MEXICO STATE PLANE COORDINATE SYSTEM, EAST ZONE OF THE NORTH AMERICAN DATUM 1927, U.S. SURVEY FEET.



SCALE: 1" = 10000'  
0' 5000' 10000'



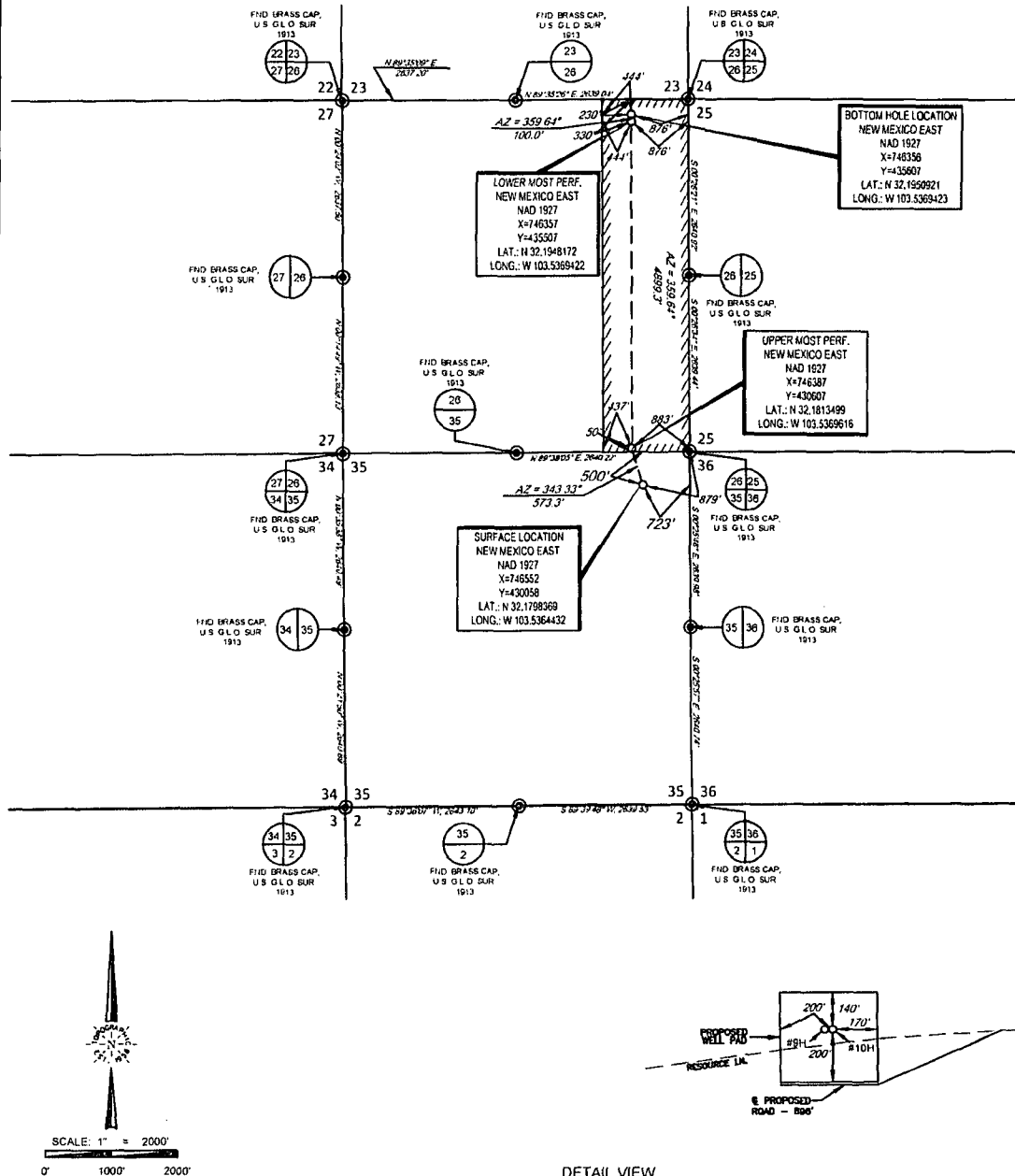
**TOPOGRAPHIC**  
LOYALTY INNOVATION LEGACY

1400 EVERMAN PARKWAY, Ste. 107 • FT. WORTH, TEXAS 76140  
TELEPHONE: (817) 744-7512 • FAX: (817) 744-7548  
2903 NORTH BIG SPRING • MIDLAND, TEXAS 79705  
TELEPHONE: (432) 682-1653 OR (800) 767-1653 • FAX: (432) 682-1743  
WWW.TOPOGRAPHIC.COM



## EXHIBIT 2A

SECTION 35, TOWNSHIP 24 SOUTH, RANGE 33 EAST, N.M.P.M.  
LEA COUNTY, NEW MEXICO



LEASE NAME & WELL NO.: HAWK 35 FED #9H

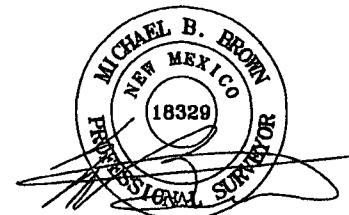
SECTION 35 TWP 24-S RGE 33-E SURVEY N.M.P.M.  
COUNTY LEA STATE NM  
DESCRIPTION 500' FNL & 723' FEL

DISTANCE & DIRECTION FROM INT. OF NM-18 N & NM-128,  
GO WEST ON NM-128 W ±22.0 MILES, THENCE SOUTH ON  
VACA LN. ±2.3 MILES, THENCE WEST ON RESOURCE LN. ±0.9  
MILES, TO A POINT ±896 FEET SOUTH OF THE LOCATION.

ALL BEARINGS, DISTANCES, AND COORDINATE VALUES CONTAINED HEREON ARE GRID  
BASED UPON THE NEW MEXICO STATE PLANE COORDINATE SYSTEM, EAST ZONE OF THE  
NORTH AMERICAN DATUM 1927, U.S. SURVEY FEET

THIS PROPOSED LOCATION SHOWN HEREON HAS BEEN SURVEYED ON THE GROUND UNDER MY  
SUPERVISION AND PREPARED ACCORDING TO THE EVIDENCE FOUND AT THE TIME OF SURVEY, AND  
DATA PROVIDED BY EOG RESOURCES, INC. THIS CERTIFICATION IS MADE AND LIMITED TO THOSE  
PERSONS OR ENTITIES SHOWN ON THE FACE OF THIS PLAT AND IS NON-TRANSFERABLE. THIS  
SURVEY IS CERTIFIED FOR THIS TRANSACTION ONLY.

DETAIL VIEW  
SCALE: 1" = 500'



Michael Blake Brown, P.S. No. 18329  
DECEMBER 13, 2013

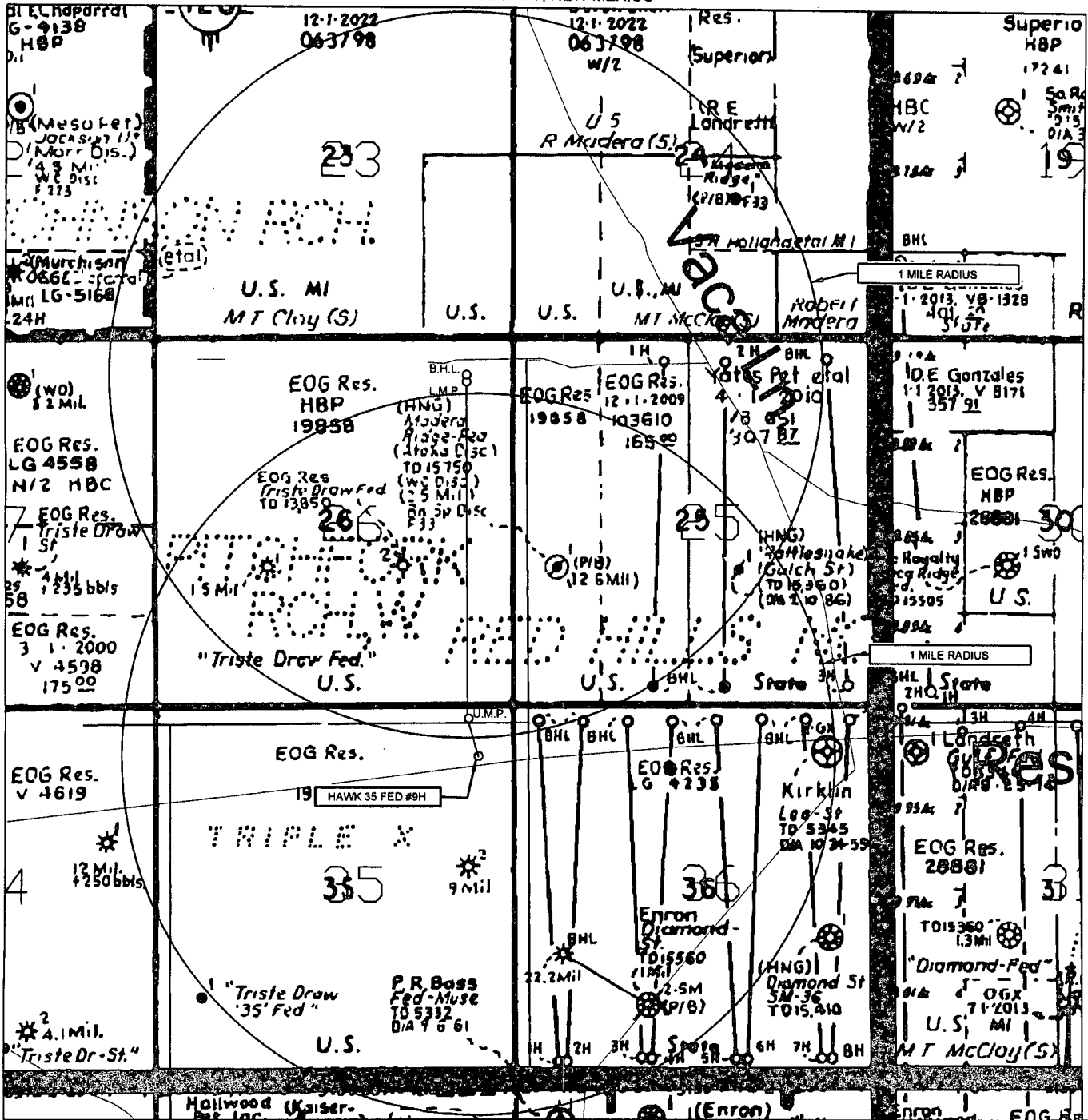
**TOPOGRAPHIC**  
LOYALTY INNOVATION LEGACY  
1400 EVERMAN PARKWAY, Ste. 107 - FT. WORTH, TEXAS 76140  
TELEPHONE: (817) 744-7512 - FAX (817) 744-7549  
2503 NORTH BK3 SPRING - MIDLAND, TEXAS 79705  
TELEPHONE: (432) 682-1653 OR (800) 767-1053 - FAX (432) 682-1743  
WWW.TOPOGRAPHIC.COM

# EXHIBIT 3



**eog resources, inc.**

SECTION 22, TOWNSHIP 25 SOUTH, RANGE 29 EAST, N.M.P.M.  
EDDY COUNTY, NEW MEXICO



SCALE: NTS

LEASE NAME & WELL NO.: HAWK 35 FED #9H

#1H LATITUDE N 32.1798369

#1H LONGITUDE W 103.5364432

## LEGEND

ALL BEARINGS, DISTANCES, AND COORDINATE VALUES CONTAINED HEREON ARE GRID BASED UPON THE NEW MEXICO STATE PLANE COORDINATE SYSTEM, EAST ZONE OF THE NORTH AMERICAN DATUM 1927, U.S. SURVEY FEET

THIS EASEMENT/SERVITUDE LOCATION SHOWN HEREON HAS BEEN SURVEYED ON THE GROUND UNDER MY SUPERVISION AND PREPARED ACCORDING TO THE EVIDENCE FOUND AT THE TIME OF SURVEY, AND DATA PROVIDED BY EOG RESOURCES, INC. THIS CERTIFICATION IS MADE AND LIMITED TO THOSE PERSONS OR ENTITIES SHOWN ON THE FACE OF THIS PLAT AND IS NON-TRANSFERABLE. THIS SURVEY IS CERTIFIED FOR THIS TRANSACTION ONLY.

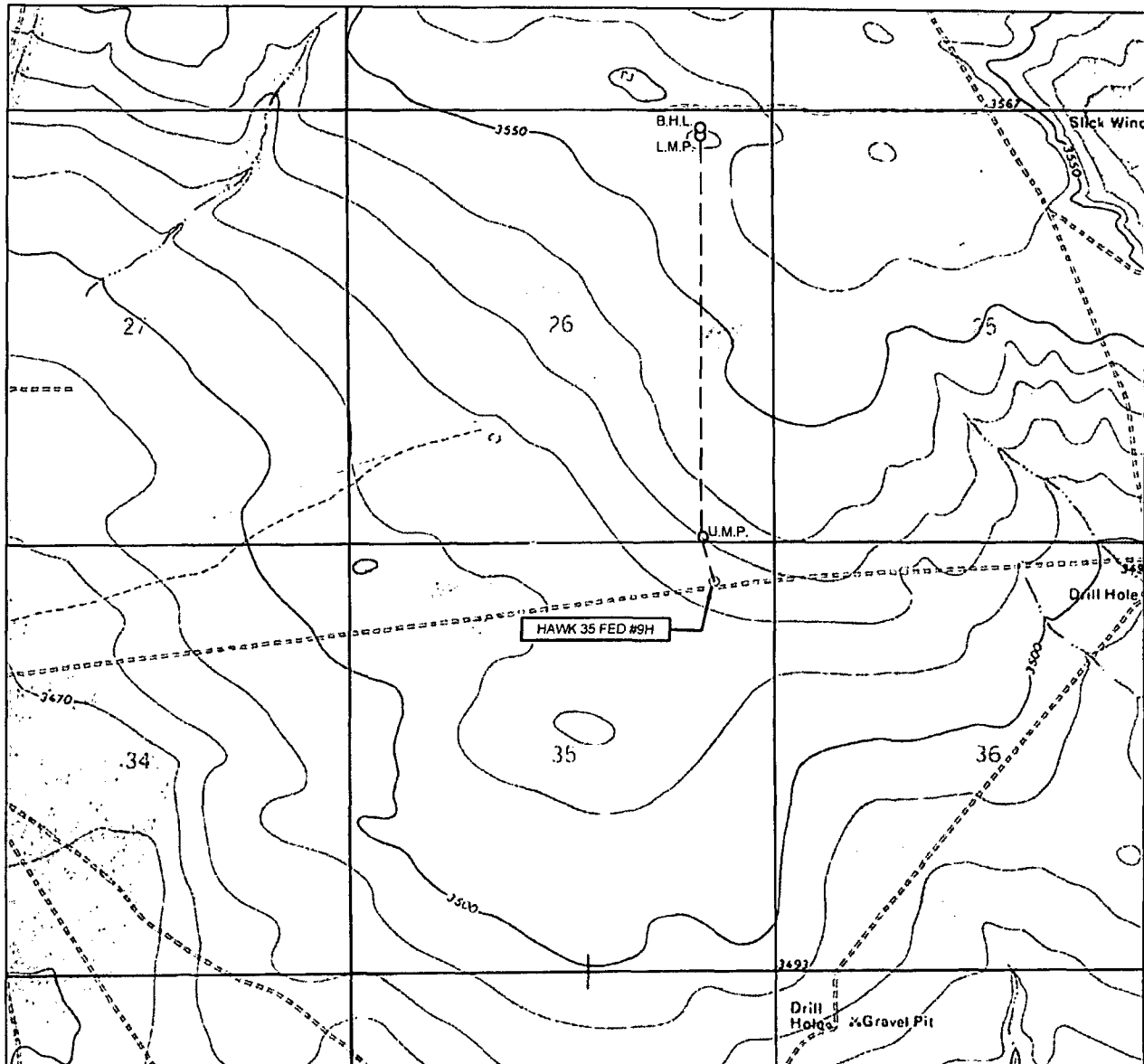
- EXISTING ROAD
- SECTION LINE
- EXISTING PIPELINE
- OVERHEAD ELECTRIC
- FENCE LINE



**TOPOGRAPHIC**  
LOYALTY INNOVATION LEGACY

1400 EVERMAN PARKWAY, Ste. 197 • FT. WORTH, TEXAS 76140  
TELEPHONE: (817) 744-7512 • FAX: (817) 744-7548  
2903 NORTH BIG SPRING • MIDLAND, TEXAS 79705  
TELEPHONE: (432) 682-1653 OR (800) 767-1653 • FAX: (432) 682-1743  
WWW.TOPOGRAPHIC.COM

# LOCATION & ELEVATION VERIFICATION MAP



**eog resources, inc.**

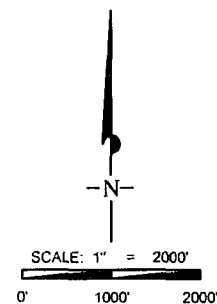
LEASE NAME & WELL NO.: HAWK 35 FED #9H

SECTION 35 TWP 24-S RGE 33-E SURVEY N.M.P.M.

COUNTY LEA STATE NM ELEVATION 3526'

DESCRIPTION 500' FNL & 723' FEL

LATITUDE N 32.1798369 LONGITUDE W 103.5364432



THIS PROPOSED LOCATION SHOWN HEREON HAS BEEN SURVEYED ON THE GROUND UNDER MY SUPERVISION AND PREPARED ACCORDING TO THE EVIDENCE FOUND AT THE TIME OF SURVEY, AND DATA PROVIDED BY EOG RESOURCES, INC. THIS CERTIFICATION IS MADE AND LIMITED TO THOSE PERSONS OR ENTITIES SHOWN ON THE FACE OF THIS PLAT AND IS NON-TRANSFERABLE. THIS SURVEY IS CERTIFIED FOR THIS TRANSACTION ONLY.

ALL BEARINGS, DISTANCES, AND COORDINATE VALUES CONTAINED HEREON ARE GRID BASED UPON THE NEW MEXICO STATE PLANE COORDINATE SYSTEM, EAST ZONE OF THE NORTH AMERICAN DATUM 1927, U.S. SURVEY FEET.



**TOPOGRAPHIC**  
LOYALTY INNOVATION LEGACY

1400 EVERMAN PARKWAY, Ste. 197 • FT. WORTH, TEXAS 76140  
TELEPHONE: (817) 744-7512 • FAX (817) 744-7548

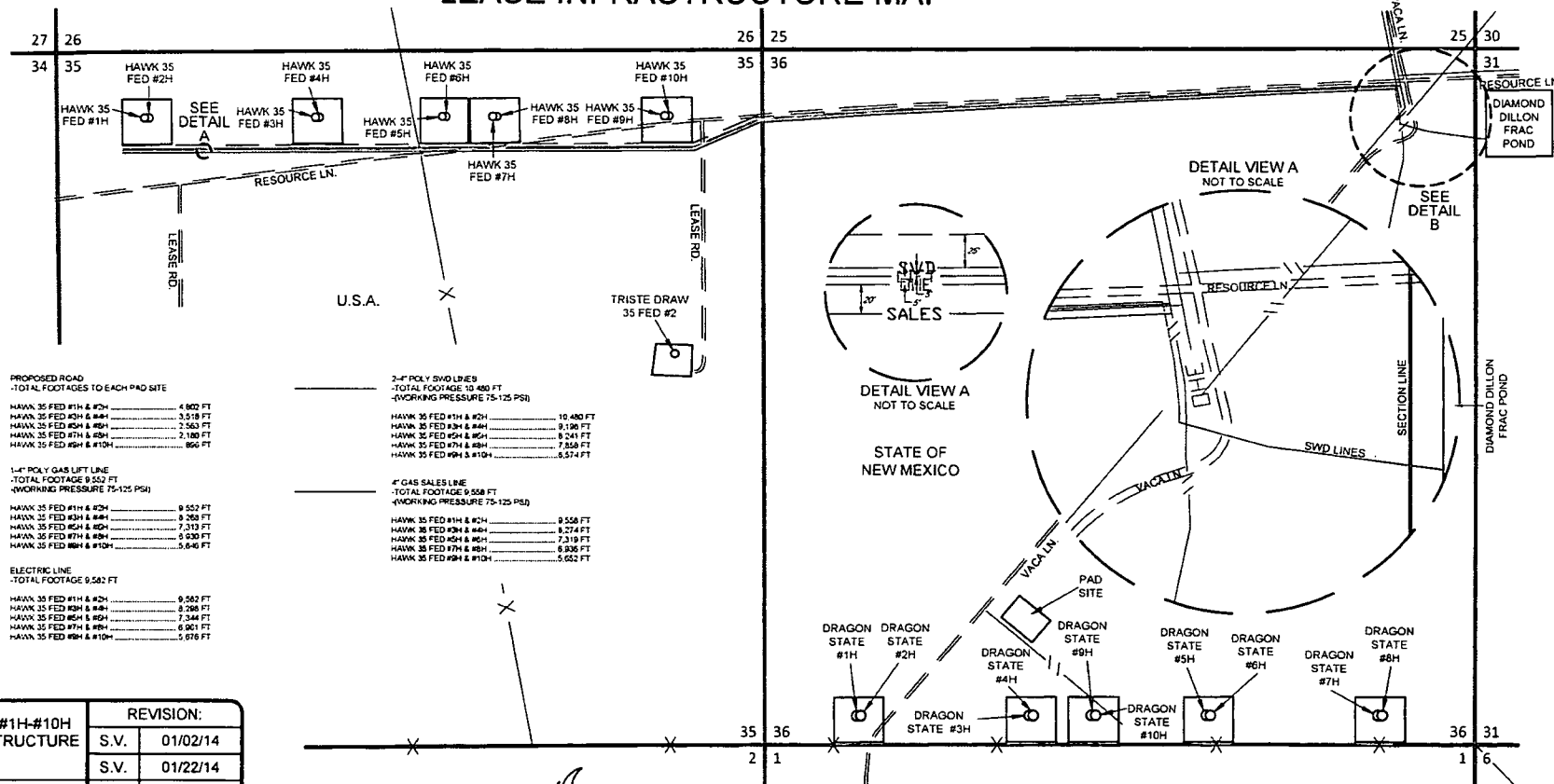
2903 NORTH BIG SPRING • MIDLAND, TEXAS 79705  
TELEPHONE: (432) 682-1653 OR (800) 767-1653 • FAX (432) 682-1743  
WWW.TOPOGRAPHIC.COM

SCALE 1" = 1000'  
0' 1000' 2000'

# EXHIBIT 5

SECTION 35 & 36, TOWNSHIP 24 SOUTH, RANGE 33 EAST, N.M.P.M.  
LEA COUNTY, NEW MEXICO

## HAWK 35 FED #1H-#10H LEASE INFRASTRUCTURE MAP



PROPOSED ROAD  
TOTAL FOOTAGES TO EACH PAD SITE

HAWK 35 FED #1H & #2H	4,800 FT
HAWK 35 FED #3H & #4H	3,518 FT
HAWK 35 FED #5H & #6H	2,563 FT
HAWK 35 FED #7H & #8H	2,180 FT
HAWK 35 FED #9H & #10H	860 FT

1.4" POLY GAS LIFT LINE  
TOTAL FOOTAGE 9,552 FT  
(WORKING PRESSURE 75-125 PSI)

HAWK 35 FED #1H & #2H	9,552 FT
HAWK 35 FED #3H & #4H	8,268 FT
HAWK 35 FED #5H & #6H	7,333 FT
HAWK 35 FED #7H & #8H	6,930 FT
HAWK 35 FED #9H & #10H	5,640 FT

ELECTRIC LINE  
TOTAL FOOTAGE 9,582 FT

HAWK 35 FED #1H & #2H	9,582 FT
HAWK 35 FED #3H & #4H	8,288 FT
HAWK 35 FED #5H & #6H	7,344 FT
HAWK 35 FED #7H & #8H	6,941 FT
HAWK 35 FED #9H & #10H	5,676 FT

3.4" POLY SWD LINES  
TOTAL FOOTAGE 10,480 FT  
(WORKING PRESSURE 75-125 PSI)

HAWK 35 FED #1H & #2H	10,480 FT
HAWK 35 FED #3H & #4H	9,190 FT
HAWK 35 FED #5H & #6H	8,241 FT
HAWK 35 FED #7H & #8H	7,558 FT
HAWK 35 FED #9H & #10H	6,574 FT

4" GAS SALES LINE  
TOTAL FOOTAGE 9,558 FT  
(WORKING PRESSURE 75-125 PSI)

HAWK 35 FED #1H & #2H	9,558 FT
HAWK 35 FED #3H & #4H	8,274 FT
HAWK 35 FED #5H & #6H	7,319 FT
HAWK 35 FED #7H & #8H	6,936 FT
HAWK 35 FED #9H & #10H	5,652 FT

HAWK 35 FED #1H-#10H LEASE INFRASTRUCTURE MAP			REVISION:
DATE:	12/18/13	A.C.C.	01/22/14
FILE:	3X HAWK35 FED #1H-#10H INFRASTRUCTURE MAP.DWG		
DRAWN BY:	S.V.		
SHEET:	1 OF 1		

eog resources, inc.