

Top perf 478' from unit boundary. Bottom perf 400' from unit boundary. See attached map.

District I
1625 N. French Dr., Hobbs, NM 88240
Phone: (575) 393-6161 Fax: (575) 393-0720
District II
811 S. First St., Artesia, NM 88210
Phone: (575) 748-1283 Fax: (575) 748-9720
District III
1000 Rio Brazos Road, Aztec, NM 87410
Phone: (505) 334-6178 Fax: (505) 334-6170
District IV
1220 S. St. Francis Dr., Santa Fe, NM 87505
Phone: (505) 476-3460 Fax: (505) 476-3462

State of New Mexico
Energy, Minerals & Natural Resources Department
OIL CONSERVATION DIVISION
1220 South St. Francis Dr.
Santa Fe, NM 87505

Form C-102
Revised August 1, 2011
Submit one copy to
appropriate
District Office

RECEIVED
FEB 05 2015

[X] AMENDED REPORT
UL corrected
(from 8 to 9)

WELL LOCATION AND ACREAGE DEDICATION PLAT

1 API Number 30-025-42245	2 Pool Code 22900	3 Pool Name Eunice; BLI-DR-TU, North
4 Property Code 22503	5 Property Name NORTH EAST DRINKARD UNIT	6 Well Number #197
7 OGRID No. 873	8 Operator Name APACHE CORPORATION	9 Elevation 3502.58

10 Surface Location

UL or lot no.	Section	Township	Range	Lot Idn	Feet from the	North/South line	Feet from the	East/West line	County
9	A	21 S	37 E		3,460	NORTH	670	EAST	LEA

11 Bottom Hole Location If Different From Surface

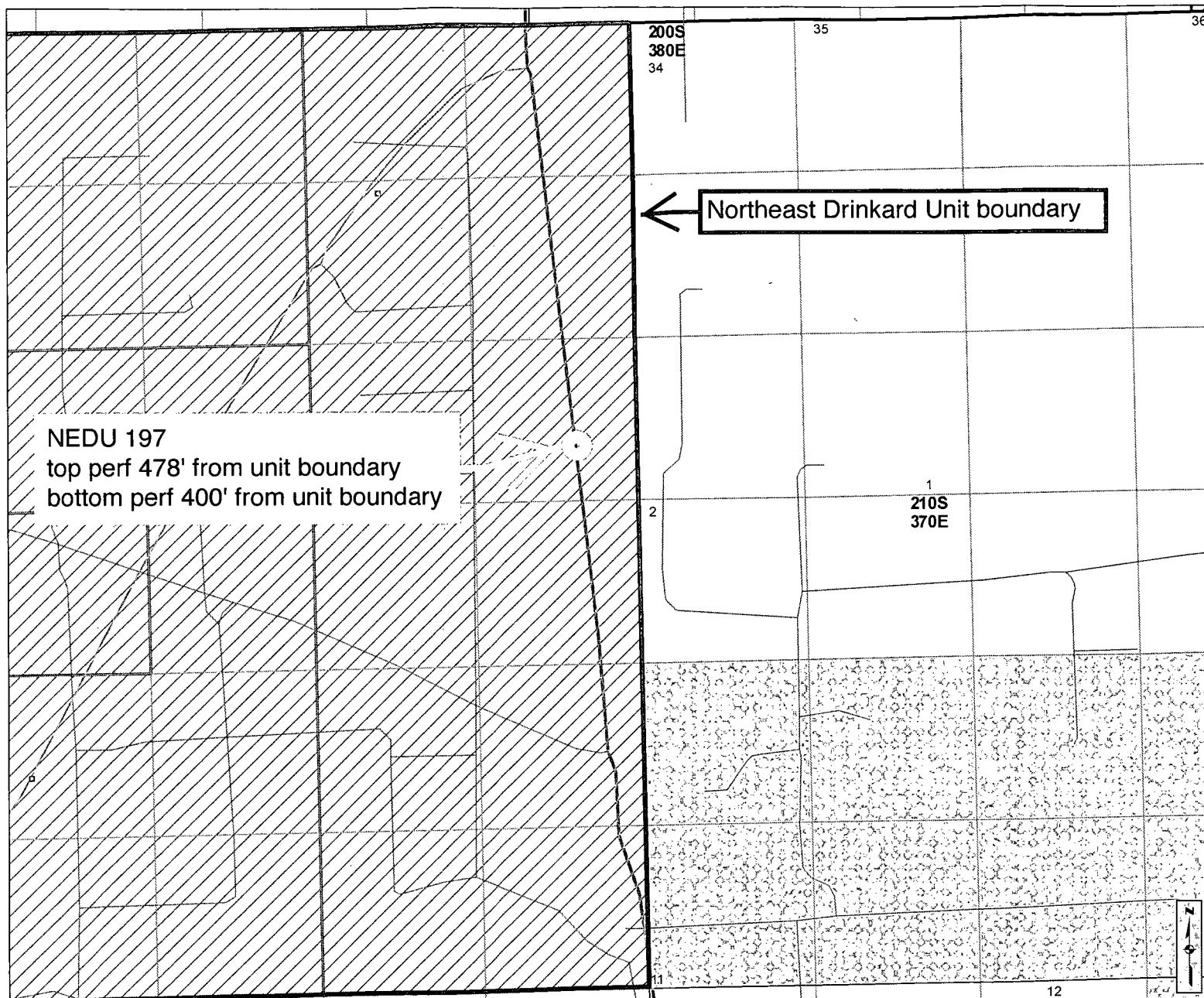
UL or lot no.	Section	Township	Range	Lot Idn	Feet from the	North/South line	Feet from the	East/West line	County
9	2	21 S	37 E		3,600	NORTH	400	EAST	LEA

No allowable will be assigned to this completion until all interests have been consolidated or a non-standard unit has been approved by the division.

SECTION 2, TOWNSHIP 21 SOUTH, RANGE 37 EAST P.M.

<p>FOUND 2 INCH IRON PIPE, CAPPED, DISTURBED LAT: 32.521975 N LON: -103.141730 W NAD83 E: 867294.102 (N.A.D. 83)</p> <p>FOUND 2 INCH IRON PIPE, CAPPED, DISTURBED LAT: 32.520984 N LON: -103.142202 W NAD83 E: 868477.594 (N.A.D. 83)</p> <p>FOUND 2 INCH IRON PIPE, CAPPED, DISTURBED LAT: 32.500432 N LON: -103.141714 W NAD83 E: 867386.629 (N.A.D. 83)</p> <p>FOUND 2 INCH IRON PIPE, CAPPED, DISTURBED LAT: 32.500552 N LON: -103.142185 W NAD83 E: 867382.641 NAD83 E: 868570.543 (N.A.D. 83)</p>	<p>FOUND 1-1/2 INCH IRON PIPE, ALUMINUM CAPPED LAT: 32.521978 N LON: -103.124600 W NAD83 E: 872574.543 (N.A.D. 83)</p> <p>FOUND 1-1/2 INCH IRON PIPE, ALUMINUM CAPPED LAT: 32.522096 N LON: -103.125072 W NAD83 E: 872570.480 NAD83 E: 871985.441 (N.A.D. 83)</p> <p>SURFACE LOCATION DD LAT: 32.512468 N DD LON: -103.126639 W DMS LAT: 32°30'44.884" N DMS LON: 103°7'35.897" W NAD83 E: 872553.926 NAD83 E: 871985.441 (N.A.D. 83)</p> <p>DD LAT: 32.512586 N DD LON: -103.127109 W DMS LAT: 32°30'45.310" N DMS LON: 103°7'37.594" W NAD83 E: 872553.490 NAD83 E: 871985.076 (N.A.D. 83)</p> <p>TOP PERF. DD LAT: 32.512195 N DD LON: -103.126609 W DMS LAT: 32°30'43.900" N DMS LON: 103°7'33.633" W NAD83 E: 872180.378 (N.A.D. 83)</p> <p>DD LAT: 32.512313 N DD LON: -103.125481 W DMS LAT: 32°30'44.327" N DMS LON: 103°7'35.330" W NAD83 E: 872216.308 NAD83 E: 871354.017 (N.A.D. 83)</p> <p>BOTTOM HOLE/BOTTOM PERF. LOCATION DD LAT: 32.512084 N DD LON: -103.125755 W DMS LAT: 32°30'43.503" N DMS LON: 103°7'32.720" W NAD83 E: 872117.492 NAD83 E: 872259.057 (N.A.D. 83)</p> <p>DD LAT: 32.512203 N DD LON: -103.126227 W DMS LAT: 32°30'43.930" N DMS LON: 103°7'34.117" W NAD83 E: 872177.040 NAD83 E: 871442.697 (N.A.D. 83)</p> <p>FOUND SPIKE NAIL IN STONE MOUND BEARS S 00°18'30" W, 5279.49' AND S 89°15'06" W, 5277.53' LAT: 32.485920 N LON: -103.141692 W NAD83 E: 867452.319 (N.A.D. 83)</p> <p>LAT: 32.486040 N LON: -103.142163 W NAD83 E: 867452.945 NAD83 E: 868636.387 (N.A.D. 83)</p>	<p>17 OPERATOR CERTIFICATION</p> <p>I hereby certify that the information contained herein is true and complete to the best of my knowledge and belief, and that this organization either owns a working interest or unleased mineral interest in the land including the proposed bottom hole location or has a right to drill this well at this location pursuant to a contract with an owner of such a mineral or working interest, or to a voluntary pooling agreement or a compulsory pooling order heretofore entered by the division.</p> <p>Signature <i>Brian Wood</i> Date 1-31-15</p> <p>Printed Name Brian Wood</p> <p>E-mail Address brian@permitswest.com</p> <p>18 SURVEYOR CERTIFICATION</p> <p>I hereby certify that the well location shown on this plat was plotted from field notes of actual surveys made by me or under my supervision, and that the same is true and correct to the best of my belief.</p> <p>10-02-2014</p> <p>Date of Survey</p> <p>Signature and Seal of Professional Surveyor</p> <p><i>Jeffery E. Hudson</i></p> <p>Certificate Number 20559</p> <p>JEFFERY E. HUDSON NEW MEXICO 20559 PROFESSIONAL SURVEYOR</p>
---	--	--

FEB 05 2015



Cartographic Features

- County Boundaries
- County Seats
- City, Town or Village
- SLO District Offices
- SLO District Boundary
- Hwy Mileposts
- Interstate
- NM Hwy
- US Hwy
- Local Road
- Continental Divide

Federal Minerals Ownership

- All Minerals
- Coal Only
- Oil and Gas Only
- Oil, Gas and Coal Only
- Other Minerals

State Trust Lands

- Surface Estate
- Subsurface Estate
- Surface and Subsurface Estate

State Leases

- Oil and Gas Leases
- Agricultural Leases
- Commercial Leases
- Minerals Leases
- Not Available for Oil and Gas Leasing
- Oil and Gas Leasing Influenced by Restriction

Oil and Gas Related Features

- Oil and Gas Unit Boundary
- Participating Areas in Units
- Geologic Regions
- Volcanic Vents
- NMOCD Order R-111-P
- Potash Enclave Outline

NMOCD Oil and Gas Wells

- CO₂
- Injection
- Oil
- Water
- Gas
- Miscellaneous
- Salt Water Disposal
- DA or PA

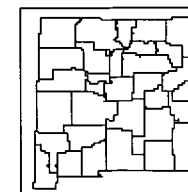
New Mexico State Land Office

Oil, Gas and Minerals

0 0.05 0.1 0.2 0.3 0.4 Miles
 Universal Transverse Mercator Projection, Zone 13
 1983 North American Datum

The New Mexico State Land Office assumes no responsibility or liability for, or in connection with, the accuracy, reliability or use of the information provided here, in State Land Office data layers or any other data layer.

Land Office Geographic Information Center
 logic@slo.state.nm.us



www.nmstatelands.org

Created On: 1/31/2015 4:01:32 PM